



Chipsmall Limited consists of a professional team with an average of over 10 year of expertise in the distribution of electronic components. Based in Hongkong, we have already established firm and mutual-benefit business relationships with customers from,Europe,America and south Asia,supplying obsolete and hard-to-find components to meet their specific needs.

With the principle of “Quality Parts,Customers Priority,Honest Operation,and Considerate Service”,our business mainly focus on the distribution of electronic components. Line cards we deal with include Microchip,ALPS,ROHM,Xilinx,Pulse,ON,Everlight and Freescale. Main products comprise IC,Modules,Potentiometer,IC Socket,Relay,Connector.Our parts cover such applications as commercial,industrial, and automotives areas.

We are looking forward to setting up business relationship with you and hope to provide you with the best service and solution. Let us make a better world for our industry!



## Contact us

Tel: +86-755-8981 8866 Fax: +86-755-8427 6832

Email & Skype: [info@chipsmall.com](mailto:info@chipsmall.com) Web: [www.chipsmall.com](http://www.chipsmall.com)

Address: A1208, Overseas Decoration Building, #122 Zhenhua RD., Futian, Shenzhen, China



# Ceramic and LDS-MID GPS<sup>†</sup> Antenna

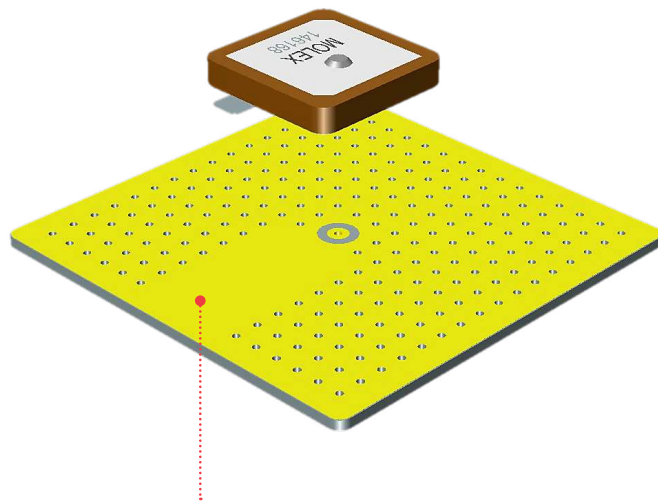


Eliminating space and PCB real-estate constraints, LDS-MID and Ceramic GPS antennas combine ease of integration with reduced cost of implementation over a variety of wireless navigation device applications

## Features and Benefits



From left to right: RHCP\*, Helix SMT LDS-MID and RHCP Ceramic GPS Antennas



### Horizontal Plane of PCB

Helps ensure highest gain from the antenna. The patch antenna achieves highest gain when placed horizontally on a surface facing the z-axis since it can receive all propagated GPS signals. Lower gain will be experienced if the patch antenna is mounted on a surface that makes an angle with the horizontal.

### Double-sided Adhesive Liner

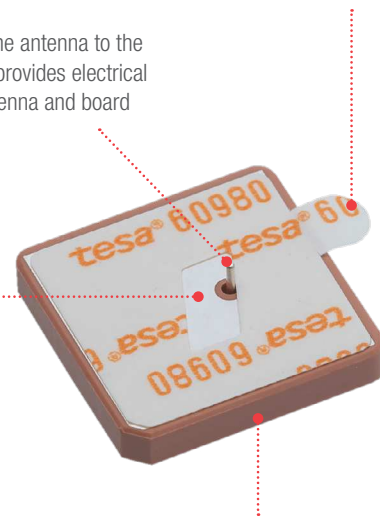
Enables easy peel-and-stick operations on PCB

### Silver Pin

Positions and fixes the antenna to the PCB (via soldering); provides electrical contact between antenna and board

### Feeding Pad (Double-sided adhesive)

Secures the antenna to the PCB



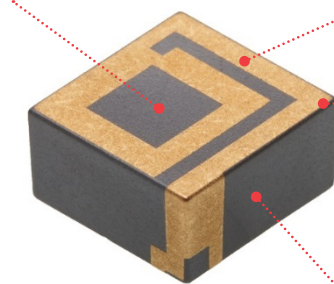
### Fixing Pads

Firmly anchor antenna housing onto SMT pad of PCB

RHCP SMT GPS Ceramic Antenna (Series 146168)

### Pick-and-place Feature

Speeds up automated placement of antenna during assembly



### Gold (Au) over Nickel (Ni) Traces

Act as transducers that convert unguided electromagnetic waves to guided electromagnetic waves and vice versa

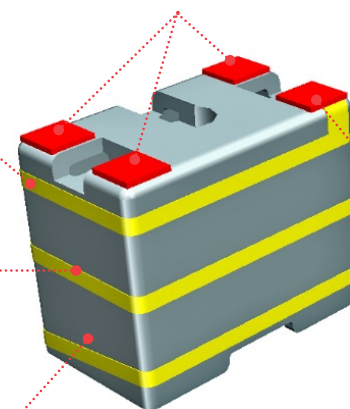
### Laser Direct Structuring (LDS)-formed Antenna Radiator

Yields high, consistent RF performance, leveraging the excellent laser structuring precision, speed, accuracy and repeatability of LDS technology

### Halogen-free Molded Interconnect Device (MID) Housing

Environmentally sustainable housing material withstands high reflow temperatures during assembly processing

RHCP SMT GPS LDS-MID Antenna (Series 146216)



### Feeding Pad

Connects to the radio transceiver via a 50-Ohm transmission line on the PCB. Electrical signals from the transmission line are fed through this pad on the PCB

Helix SMT GPS LDS-MID Antenna (Series 146235)

\*RHCP – An industry acronym for “Right Hand Circularly Polarized”.

†GPS - Global Positioning System. Civilian GPS uses the L1 frequency of 1575.42 MHz in the Ultra High Frequency (UHF) band spanning 300MHz to 3GHz



# Ceramic and LDS-MID GPS<sup>+</sup> Antenna



## Applications

### Automotive

#### Commercial Vehicle

Agricultural Vehicle

Rail

#### Commercial Aviation

#### Consumer (Recreational)

Geocaching

#### Industrial

Maritime Port Management System

Surveying and Mapping Systems

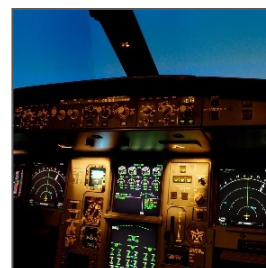
Emergency Response Systems



Automotive



Agricultural



Commercial Aviation

## Specifications

### REFERENCE INFORMATION

#### Packaging:

Tape on reel (146216, 146235), Tray (146168)

#### Reference Platform:

100.00 by 100.00 by 1.00mm (146216); 100.00

by 50.00 by 1.00mm (146235); 70.00 by

70.00mm (146168)

#### Designed In: Millimeters

RoHS Compliant: Yes

Halogen-free: Yes

Ground Clearance: Refer to Application Specification of each respective Series

### ELECTRICAL

RF Power (Watt): 2

Return Loss - S11(dB):

<-10 (146216, 146235); <-15 dB (146168)

Average Total Radiation Efficiency(%):

>57 (146216); >55 (146235); >75 (146168)

Peak Gain (dBi):

1.0 (146216); 1.4 (146235); 5.5 (146168)

Polarization: RHCP (146216, 146168);

Elliptic (146235)

Input Impedance (ohms): 50

### MECHANICAL

Peeling Force (min.): 8N (146216, 146235)

### PHYSICAL

Housing: LCP-LDS, Vectra E840ILDS, 40% mineral-filled LDS grade

Flammability: UL 94V-0

#### Plating:

Series 146216, 146235:

Hatched Area — 0.05micron Gold (Au) min.

MID Plane — 1.0 to 2.5micron Nickel (Ni)

Under-plating — 12 to 16micron Copper (Cu)

Series 146168:

Silver: 8 to 10micron (Ag)

Operating Temperature: -40 to 125°C

## Ordering Information

Series No.	Frequency Band (MHz)	Dimensions (mm)
<a href="#">146235</a>	1561±5; 1575±5; 1602±5	5.00(L) by 3.00(W) by 4.00(H)
<a href="#">146216</a>	1561±5; 1575±5; 1602±5	11.80(L) by 11.50(W) by 5.95(H)
<a href="#">146168</a>	1575±3	25.00(L) by 25.00(W) by 4.00(H)

[www.molex.com/link/standard\\_antennas.html](http://www.molex.com/link/standard_antennas.html)