



Chipsmall Limited consists of a professional team with an average of over 10 year of expertise in the distribution of electronic components. Based in Hongkong, we have already established firm and mutual-benefit business relationships with customers from,Europe,America and south Asia,supplying obsolete and hard-to-find components to meet their specific needs.

With the principle of “Quality Parts,Customers Priority,Honest Operation,and Considerate Service”,our business mainly focus on the distribution of electronic components. Line cards we deal with include Microchip,ALPS,ROHM,Xilinx,Pulse,ON,Everlight and Freescale. Main products comprise IC,Modules,Potentiometer,IC Socket,Relay,Connector.Our parts cover such applications as commercial,industrial, and automotives areas.

We are looking forward to setting up business relationship with you and hope to provide you with the best service and solution. Let us make a better world for our industry!



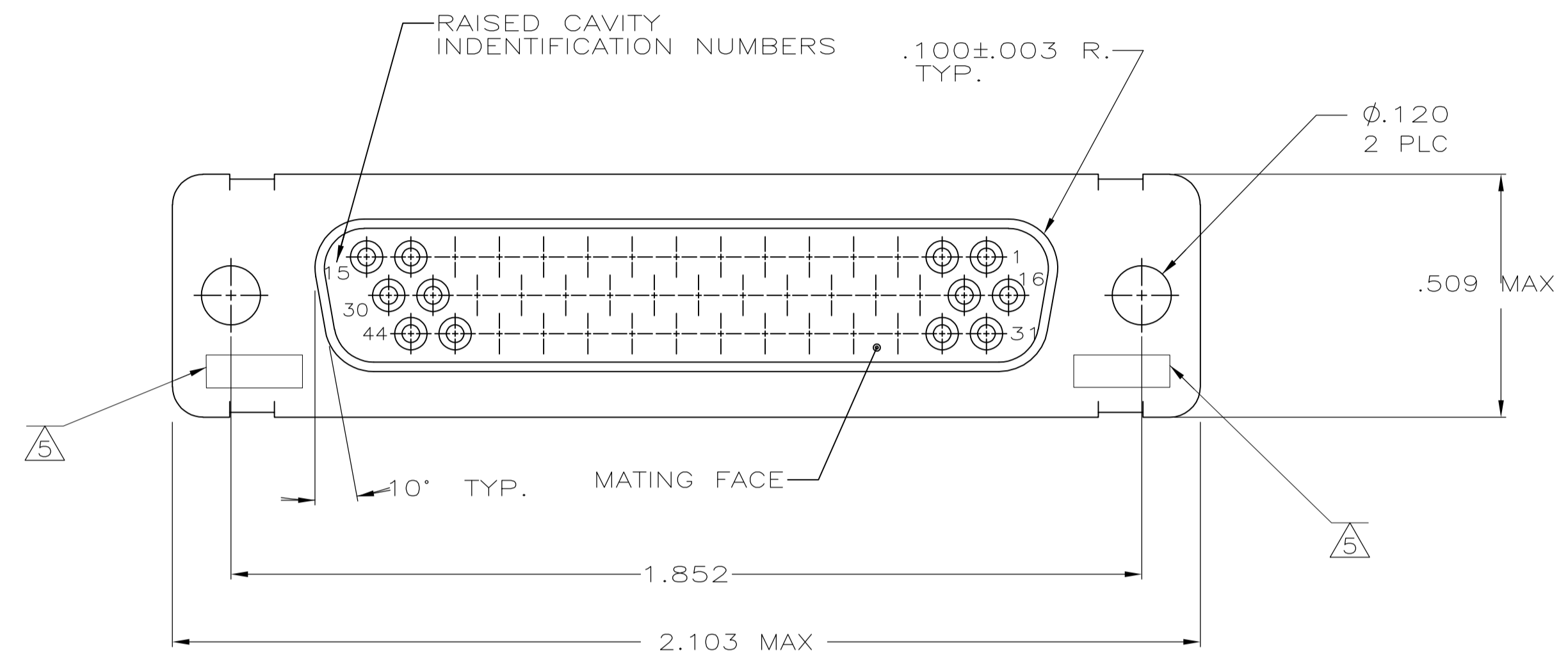
Contact us

Tel: +86-755-8981 8866 Fax: +86-755-8427 6832

Email & Skype: info@chipsmall.com Web: www.chipsmall.com

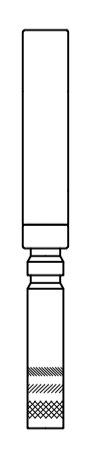
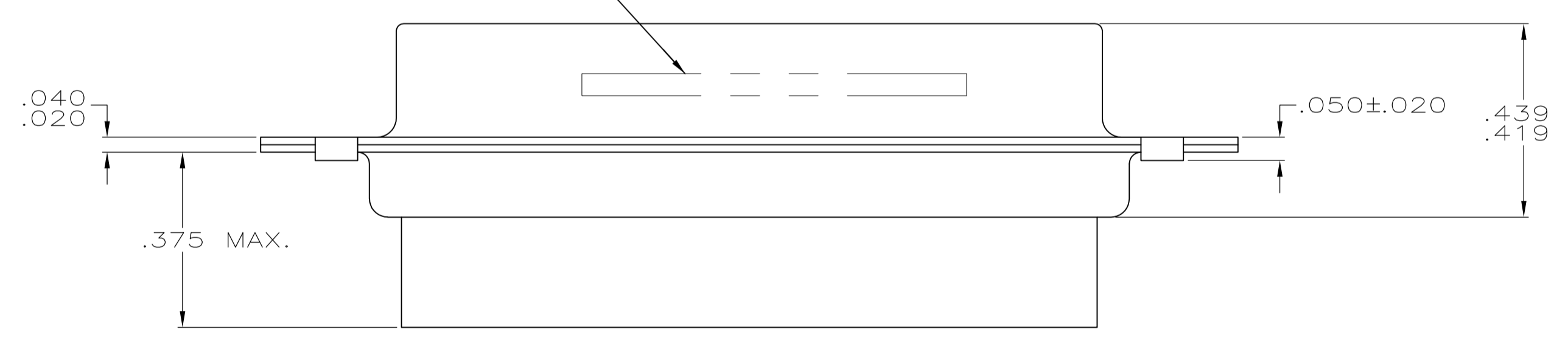
Address: A1208, Overseas Decoration Building, #122 Zhenhua RD., Futian, Shenzhen, China



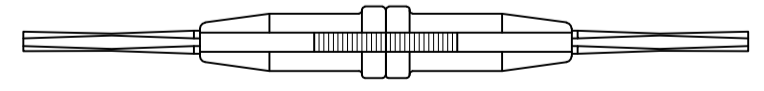


1. THIS RCPT. IS DESIGNED TO CONFORM TO THE LATEST ISSUE OF MIL-C-24308. EXCEPT AS NOTED HEREIN.
 2. MAX WIRE INSUL TO BE USED WITH THIS RCPT IS .054 DIA
 3. METAL RETENTION CLIPS ARE INCLUDED IN INSERTS
 4. THIS RCPT. WILL ACCEPT SIZE 22 SOCKET CONTACT M 39029/57-354 OR ANY AMP HDD-22 SOCKET CONTACT
- ⚠ 5 UL & CSA DESIGNATION STAMPED ON SHELL, OPTIONAL
 - ⚠ 6 DIALYL PHTHALATE PER MIL-M-14, TYPE SDG-F
COLOR: BLUE
OR POLYPHENYLENE SULFIDE(PPS)
PER MIL-M24519, TYPE GST-40F
COLOR: BLACK
 - ⚠ 7 STEEL PER ASTM-A-109 OR EQUIVALENT.
 - ⚠ 8 CADMIUM PER QQ-P-416, TYPE II, CLASS 2
OVER COPPER PER MIL-C-14550, CLASS 4.

MILITARY PART NUMBER MARKED (NEAR SIDE)
MFG'S NAME, BRAND OR LOGO, MFG'S PART NUMBER
AND DATE CODE MARKED (FAR SIDE)



SOCKET CONTACT
PART NO 204351-1
QTY 44
SUPPLIED WITH CONNECTOR
BUT NOT INSTALLED



INSERTION/EXTRACTION TOOL
PART NO 91067-1
SUPPLIED WITH CONNECTOR
(-3 ONLY)

⚠ 5	⚠ 6	⚠ 7	⚠ 8	M24308/2-19F	M24308/2-19F	204516-3
-	⚠ 6	⚠ 7	⚠ 8	M24308/2-13F	M24308/2-13F	204516-2
REMARKS	INSERT MATERIAL	SHELL MATERIAL	SHELL FINISH	MILITARY PART NO ON PACKAGE	MILITARY PART NO ON PACKAGE	PART NO.

THIS DRAWING IS A CONTROLLED DOCUMENT. J.A. BAKER 10-02-95

DIMENSIONS: INCHES	TOLERANCES UNLESS OTHERWISE SPECIFIED:	APVD	NAME
0 PLC ± -	1 PLC ± -	-	-
2 PLC ± -	3 PLC ± .005	PRODUCT SPEC	-
4 PLC ± -	ANGLES ± -	APPLICATION SPEC	-
MATERIAL SEE TABLE	FINISH SEE CALLOUTS	WEIGHT	RESTRICTED TO
		A1 00779	-

STE TE Connectivity
KIT HDD SERIES
RECEPTACLE SIZE 3(44POS)

SIZE: A1 CAGE CODE: 00779 DRAWING NO: 204516
CUSTOMER DRAWING SCALE: 4:1 SHEET: 1 OF 1 REV: H1