



Chipsmall Limited consists of a professional team with an average of over 10 year of expertise in the distribution of electronic components. Based in Hongkong, we have already established firm and mutual-benefit business relationships with customers from,Europe,America and south Asia,supplying obsolete and hard-to-find components to meet their specific needs.

With the principle of "Quality Parts,Customers Priority,Honest Operation,and Considerate Service",our business mainly focus on the distribution of electronic components. Line cards we deal with include Microchip,ALPS,ROHM,Xilinx,Pulse,ON,Everlight and Freescale. Main products comprise IC,Modules,Potentiometer,IC Socket,Relay,Connector.Our parts cover such applications as commercial,industrial, and automotives areas.

We are looking forward to setting up business relationship with you and hope to provide you with the best service and solution. Let us make a better world for our industry!



Contact us

Tel: +86-755-8981 8866 Fax: +86-755-8427 6832

Email & Skype: info@chipsmall.com Web: www.chipsmall.com

Address: A1208, Overseas Decoration Building, #122 Zhenhua RD., Futian, Shenzhen, China



THIS DRAWING IS UNPUBLISHED.

RELEASED FOR PUBLICATION

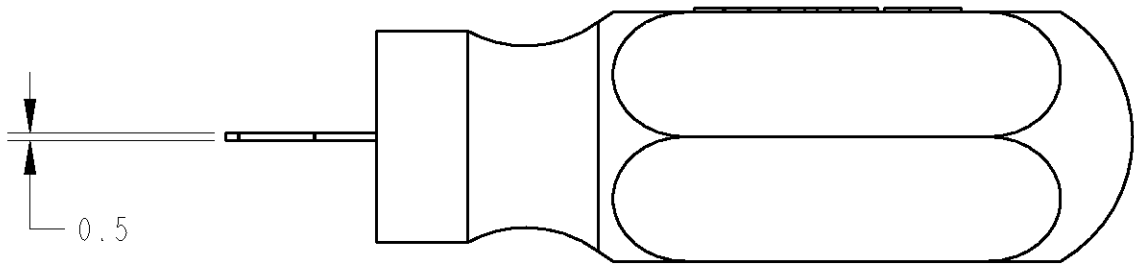
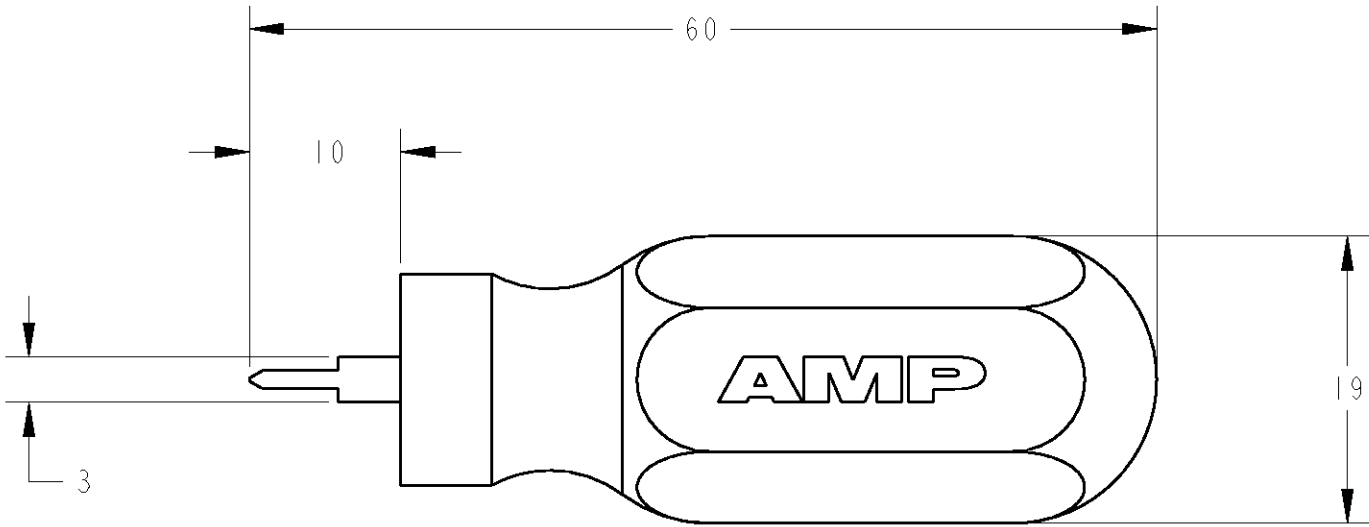
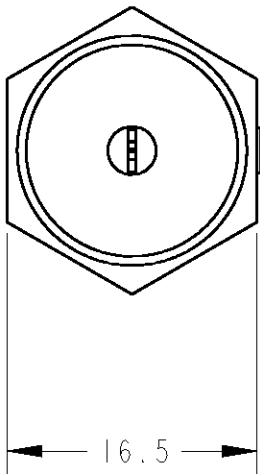
20

© COPYRIGHT 20

BY TYCO ELECTRONICS CORPORATION, ALL RIGHTS RESERVED.


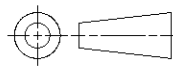
LOC	DIST	REVISIONS					
		P	LTR	DESCRIPTION	DATE	DWN	APVD
J	-		A	RELEASED	17JAN2008	J.K	S.Y

-1: AS SHOWN (本図)



1 APPLICABLE PRODUCTS 適用製品
REC CONTACT(STRIP) : 1939349, 1939350, 1939351,1981878
PLUG HOUSING : 1939927, 1939938

2 INSTRUCTION SHEET NO: 411-78304
取扱説明書番号

THIS DRAWING IS A CONTROLLED DOCUMENT FOR TYCO ELECTRONICS CORPORATION IT IS SUBJECT TO CHANGE AND THE CONTROLLING ENGINEERING ORGANIZATION SHOULD BE CONTACTED FOR THE LATEST REVISION.				DWN J. KOGA 17JAN2008		 Tyco Electronics Corporation Kawasaki, Japan				
DIMENSIONS: mm		TOLERANCES UNLESS OTHERWISE SPECIFIED:		CHK J. KOGA 17JAN2008		NAME EXTRACTION TOOL 0.5/1.0 SERIES SEALED CONTACT -				
		APVD S. YABE 17JAN2008		PRODUCT SPEC -						
		APPLICATION SPEC -								
		WEIGHT -								
MATERIAL -		FINISH -		CUSTOMER DRAWING		SIZE A3	CAGE CODE 00779	DRAWING NO C=2047050	RESTRICTED TO -	
						SCALE 2:1		SHEET 1	OF 1	REV A