



Chipsmall Limited consists of a professional team with an average of over 10 year of expertise in the distribution of electronic components. Based in Hongkong, we have already established firm and mutual-benefit business relationships with customers from,Europe,America and south Asia,supplying obsolete and hard-to-find components to meet their specific needs.

With the principle of “Quality Parts,Customers Priority,Honest Operation,and Considerate Service”,our business mainly focus on the distribution of electronic components. Line cards we deal with include Microchip,ALPS,ROHM,Xilinx,Pulse,ON,Everlight and Freescale. Main products comprise IC,Modules,Potentiometer,IC Socket,Relay,Connector.Our parts cover such applications as commercial,industrial, and automotives areas.

We are looking forward to setting up business relationship with you and hope to provide you with the best service and solution. Let us make a better world for our industry!



## Contact us

Tel: +86-755-8981 8866 Fax: +86-755-8427 6832

Email & Skype: info@chipsmall.com Web: www.chipsmall.com

Address: A1208, Overseas Decoration Building, #122 Zhenhua RD., Futian, Shenzhen, China

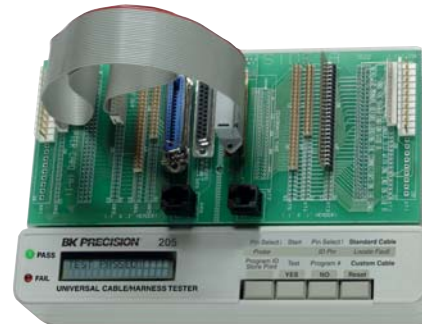


### Data Sheet

#### Model 205 Universal Cable Tester

The B+K Precision Model 205 Universal Cable / Harness Tester tests just about any cable or harness in fractions of a second. It is a compact, stand-alone unit that can be used for any type of wired assembly. Opens, shorts and miswires are detected immediately. The universal adapter card offers outstanding flexibility and convenience, ready to accept any of the industry's 22 most popular connector styles. A crisp, easy-to-read LCD instantly indicates good or faulty connections and the included probe pin-points the trouble spot.

- Detects opens, shorts and miswires
- Test up to 128 points in a fraction of a second
- Universal Adapter Card accepts most popular connectors
- Includes single wire test probe
- Stores up to 50 test programs
- Printer interface for wire listing
- Spare PCB test board assemblies optional (205-PCB)

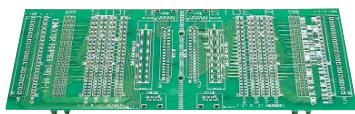


\* Connectors and cards are not included with model 205

Accepts These Connect			model
			205
Interface	Spacing/Style	Connector	Maximum
8	0.1"	Dual-Row	64
2	"D" Subminiature	Dual-Row	37
2	Delta	Centronics	80
2	0.6"	DIP	40
2	RJ11	Phone Plug	6
2	PJ45	Phone Plug	8
2	0.156" Header	Single-Row	20
2	0.1" Header	Single-Row	32

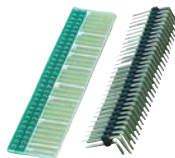


### Optional Accessories



**Model 205PCB**  
205 Cable Tester, Replacement PCB

One 205PCB is included with each model 205



**Model 205RAA**  
Right Angle Card Edge Connector