



Chipsmall Limited consists of a professional team with an average of over 10 year of expertise in the distribution of electronic components. Based in Hongkong, we have already established firm and mutual-benefit business relationships with customers from,Europe,America and south Asia,supplying obsolete and hard-to-find components to meet their specific needs.

With the principle of “Quality Parts,Customers Priority,Honest Operation,and Considerate Service”,our business mainly focus on the distribution of electronic components. Line cards we deal with include Microchip,ALPS,ROHM,Xilinx,Pulse,ON,Everlight and Freescale. Main products comprise IC,Modules,Potentiometer,IC Socket,Relay,Connector.Our parts cover such applications as commercial,industrial, and automotives areas.

We are looking forward to setting up business relationship with you and hope to provide you with the best service and solution. Let us make a better world for our industry!



## Contact us

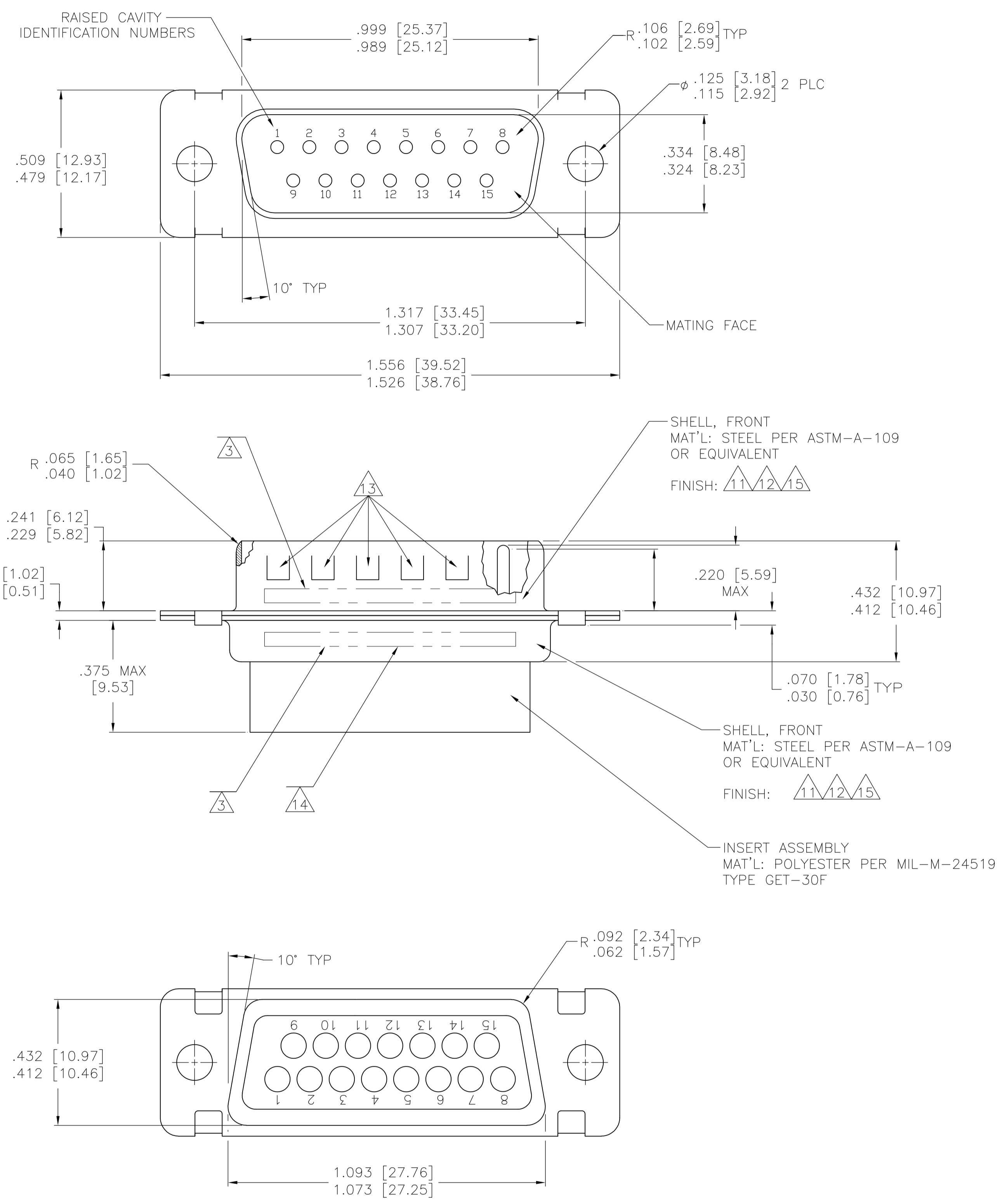
Tel: +86-755-8981 8866 Fax: +86-755-8427 6832

Email & Skype: info@chipsmall.com Web: www.chipsmall.com

Address: A1208, Overseas Decoration Building, #122 Zhenhua RD., Futian, Shenzhen, China



REVISONS		DATE	DWN	APVD
LOC	DIST	DESCRIPTION		
T1	REVISED PER	ECO-11-005030	11MAR11	RK HMR



- THIS CONNECTOR ASSEMBLY IS SUPPLIED WITH METAL CONTACT RETENTION CLIPS INSTALLED IN THE INSERT ASSEMBLY.
- THIS CONNECTOR ASSEMBLY MEETS THE REQUIREMENTS OF MIL-C-24308 AND MATES WITH ANY RECEPTACLE CONNECTOR WITH THE SAME INSERT ARRANGEMENT.
- THE PART NUMBER MARKED ON THE CONNECTOR MAY DIFFER FROM THE PART NUMBER ORDERED DUE TO THE MARKING REQUIREMENTS OF MIL-C-24308/4 (PART NUMBER MARKED ON CONNECTOR REPRESENTS CONNECTOR ASSEMBLY WITH CONTACTS). MARK WITH .047 [1.19]-.062 [1.57] HIGH CHARACTERS. FAR SIDE REFERS TO THE WIDE SIDE OF THE KEYSTONE. NEAR SIDE REFERS TO THE NARROW SIDE OF THE KEYSTONE. MARKING SHALL BE LOCATED AS FOLLOWS:
  - "M24308" ON FRONT SHELL, FAR SIDE.
  - SLASH SHEET AND DASH NUMBER ON REAR SHELL, FAR SIDE.
  - "MFG'S NAME, BRAND OR LOGO" AND DATE CODE ON FRONT SHELL, NEAR SIDE.
  - MFG'S PART NUMBER ON REAR SHELL, NEAR SIDE.
- FULL PIN DIAMETER EXTENSION IS .164 [4.17] MIN. CONTACT NOT INCLUDED - SHOWN FOR DIMENSIONAL REFERENCE ONLY.
- THIS CONNECTOR ASSEMBLY IS DESIGNED TO ACCEPT SIZE 20 CRIMP TYPE PIN CONTACT MILITARY PART NUMBER M39029/64-369 (MFG'S PART NUMBER 205089-1). FOR ALTERNATE CONTACT OPTIONS CONSULT TE CONNECTIVITY CATALOG.
- MAXIMUM WIRE INSULATION TO BE USED WITH THIS CONNECTOR ASSEMBLY IS .072 [1.83] DIAMETER.
- FOR CONTACT CRIMPING INSTRUCTION SHEET REFER TO TE CONNECTIVITY IS 7516. FOR CONTACT INSTALLATION AND REMOVAL INSTRUCTION SHEET REFER TO TE CONNECTIVITY IS 7508.
- PART NUMBER FOR ORDERING.
- DIMENSIONS AND TOLERANCES PER ANSI Y14.5M-1982.
- THIS DRAWING SHALL BE INTERPRETED IN ACCORDANCE WITH APPLICABLE STANDARDS LISTED IN MIL-STD-100.
- FINISH: CADMIUM PER QQ-P-416, TYPE II, CLASS 2 OVER COPPER PER AMS2418, CLASS 4
- FINISH: TIN PER ASTM-B-545, .000200 [0.0051] MIN THK OVER COPPER PER AMS2418, .000050 [0.00127] MIN THK.
- FRONT SHELL HAS GROUNDING INDENTS ON 205164-4 & -5 ONLY.
- MARK .047-.062 HIGH PER 115-10002-2. FAR SIDE REFERS TO WIDE SIDE OF KEYSTONE. MARKING SHALL BE AS FOLLOWS:
  - MFG'S PART NUMBER AND DATE CODE ON REAR SHELL, FAR SIDE.
- FINISH: BRIGHT TIN PER ASTM-B-545, .000400-.000550 THK OVER COPPER PER AMS2418 .000050 MIN THK.

	14 15	15	2	-	-	205164-6	205164-6
	13 14 15	15	2	-	-	205164-5	205164-5
	12 13 14	15	2	-	-	205164-4	205164-4
SUPSD. BY 205288-1	11	15	2	-	-	205164-3	205164-3
SUPSD. BY 206798-2	11	15	2	-	-	205558-4	205164-2
	11	15	2	M24308/4-260F	M24308/4-2F	205558-2	205164-1
REMARKS	NO OF POSN	SHELL SIZE	PACKAGE MILITARY P/N	MILITARY P/N ON CONNECTOR	MFG'S P/N ON CONNECTOR	PART NUMBER	

THIS DRAWING IS A CONTROLLED DOCUMENT.

APPROVED: R. GILLMAN

DATE: 23FEB93

TE Connectivity

AMPLIMITE PLUG ASSY WITHOUT SIZE 20 CRIMP TYPE PIN CONTACTS SERIES 109, SHELL SIZE 2

SIZE: A1

WEIGHT: -

CUSTOMER DRAWING

SCALE: 4:1

SHEET: 1 OF 1

REV: T1