



Chipsmall Limited consists of a professional team with an average of over 10 year of expertise in the distribution of electronic components. Based in Hongkong, we have already established firm and mutual-benefit business relationships with customers from,Europe,America and south Asia,supplying obsolete and hard-to-find components to meet their specific needs.

With the principle of “Quality Parts,Customers Priority,Honest Operation,and Considerate Service”,our business mainly focus on the distribution of electronic components. Line cards we deal with include Microchip,ALPS,ROHM,Xilinx,Pulse,ON,Everlight and Freescale. Main products comprise IC,Modules,Potentiometer,IC Socket,Relay,Connector.Our parts cover such applications as commercial,industrial, and automotives areas.

We are looking forward to setting up business relationship with you and hope to provide you with the best service and solution. Let us make a better world for our industry!



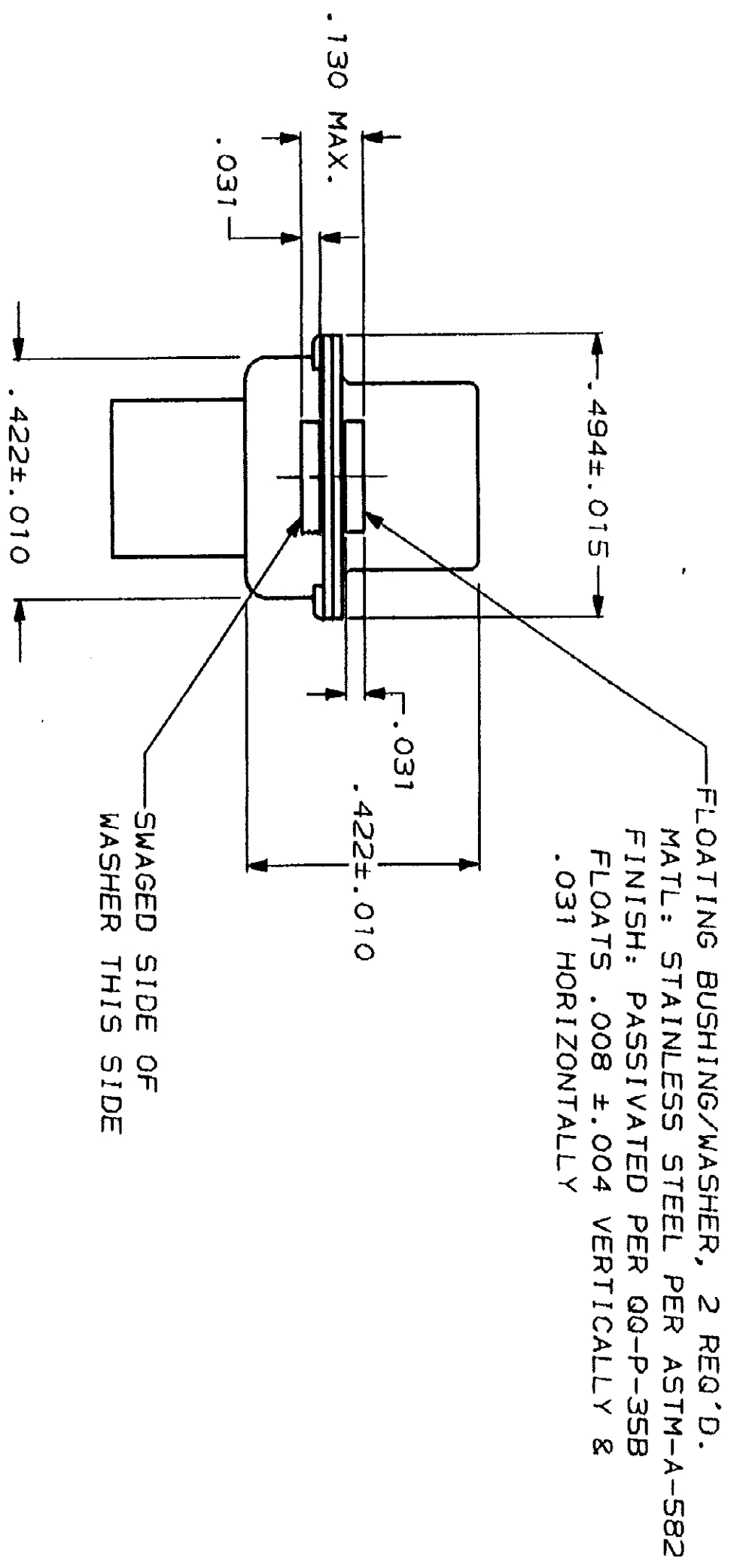
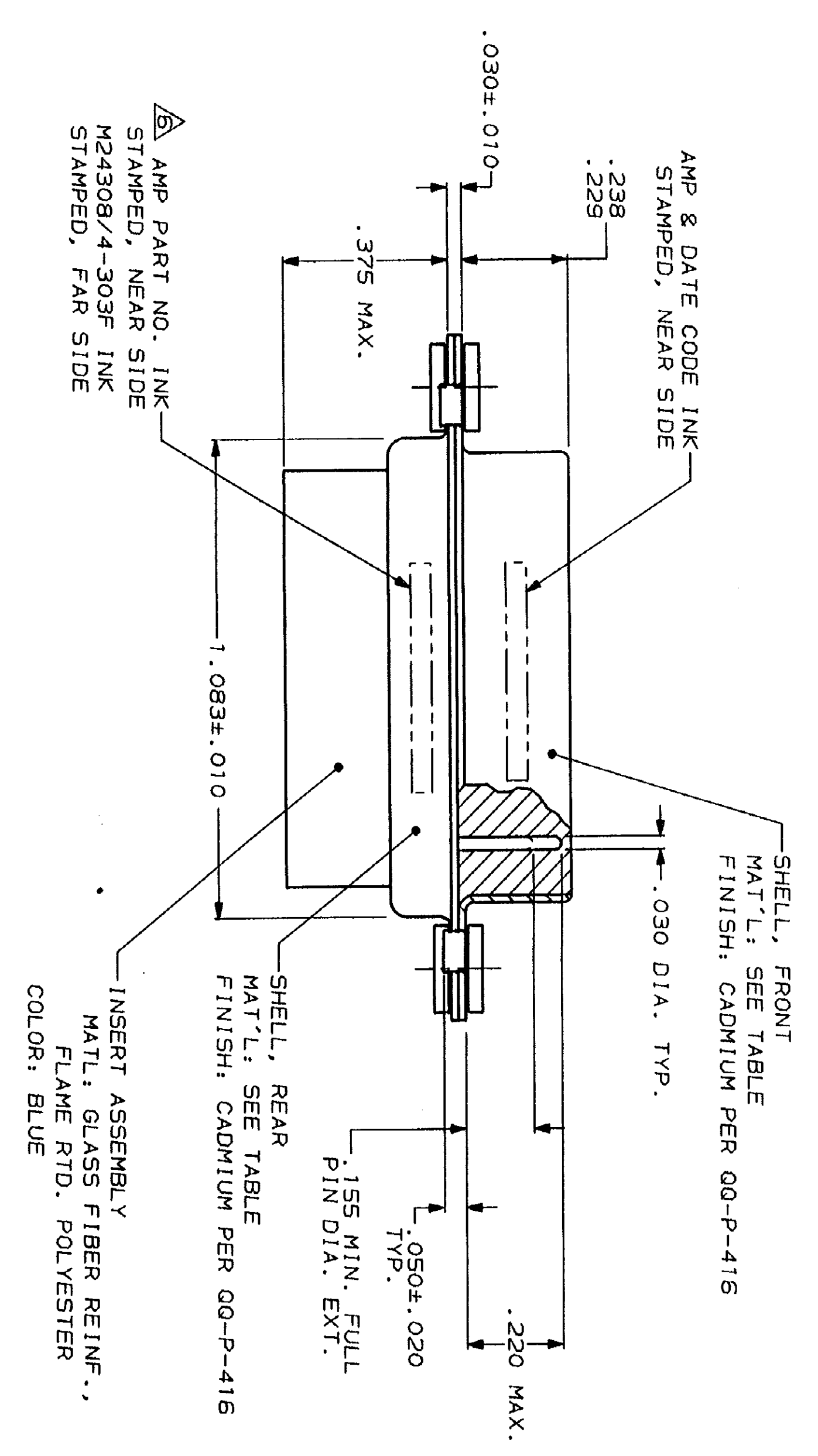
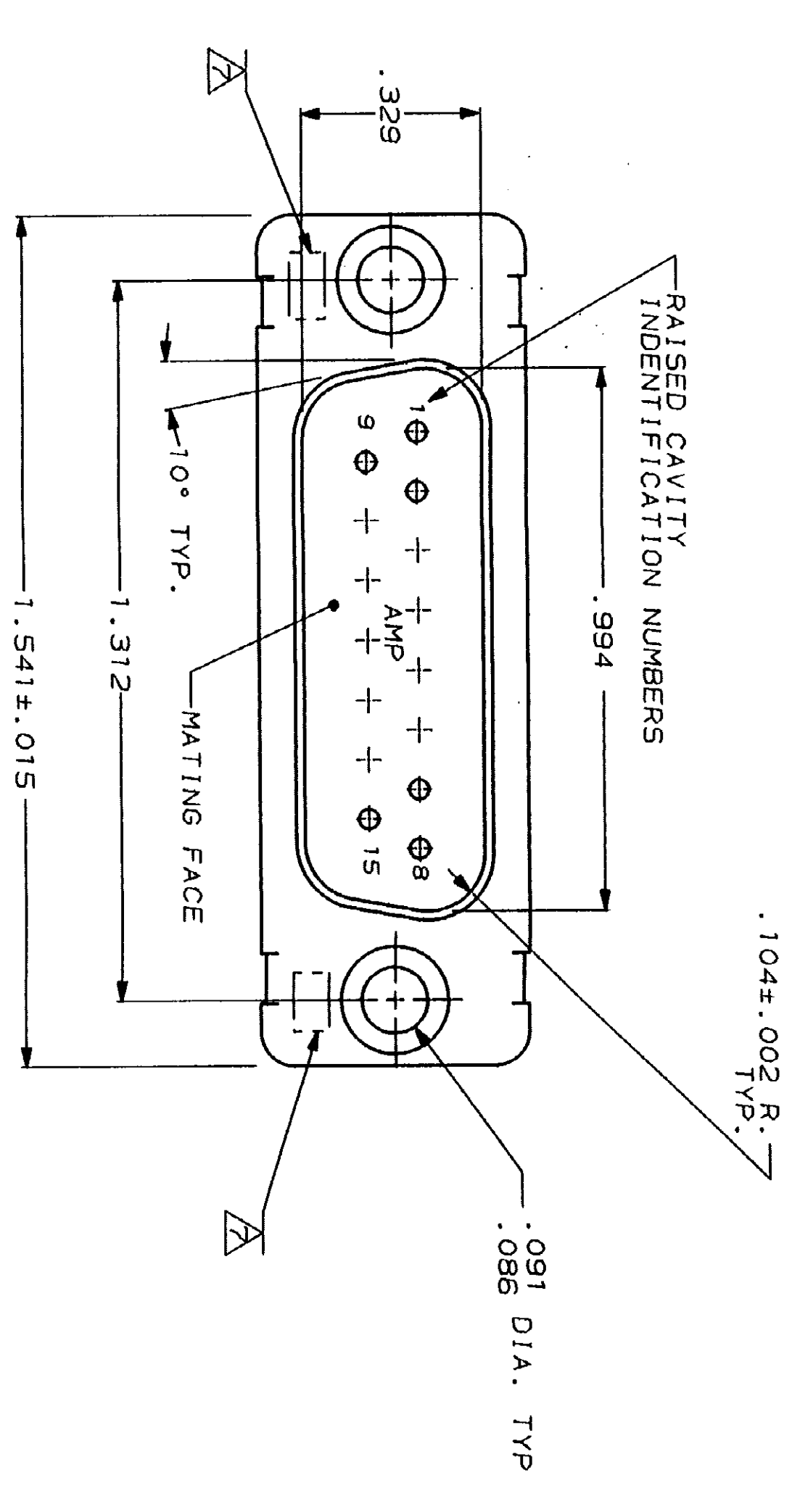
Contact us

Tel: +86-755-8981 8866 Fax: +86-755-8427 6832

Email & Skype: info@chipsmall.com Web: www.chipsmall.com

Address: A1208, Overseas Decoration Building, #122 Zhenhua RD., Futian, Shenzhen, China





1. THIS PLUG IS DESIGNED TO CONFORM TO THE LATEST ISSUE OF MIL-C-24308
 2. MAX WIRE INSUL. TO BE USED WITH THIS PLUG IS .068 DIA.
 3. STAINLESS STEEL RETENTION CLIPS ARE INCLUDED IN INSERTS
 4. PACKAGE STAMPED M 24308/4-325F
 5. THIS PLUG WILL ACCEPT SIZE 20 PIN CONTACT M24308/11 OR AMP # 205089
- AMP PART NO. STAMPED ON CONNECTOR REPRESENTS KIT NUMBER WITH CONTACTS
 UL/CSA DESIGNATION STAMPED IN THIS AREA.

DO NOT SCALE PRINT. UNLESS SPECIFIED TO THE CONTRARY DIMENSIONS ARE IN INCHES	DR 12-9-87 C.C. THOMAS	NAME AMP LITE PLUG FOR PIN CONTACTS HI-DENSITY "HDM-20" CONNECTOR SIZE 2 (15 POSN) SERIES 109 WITH FLOAT BUSHINGS
2 PLG DEC # .005	CHK 12-10-87 FC BALLEW III	AMP INCORPORATED MILWAUKEE, WIS. 53122
3 ANGLES # 0°30'	APPD 12-10-87 FC BALLEW III	AMP PART NO. 205408-1
MATERIAL	APPD 12-10-87 DJH	STEEL PER ASTM-A-109
SEE CALLOUTS	PRODUCT SPEC	SHELL MAT'L
SEE CALLOUTS	APPLICATION SPEC	BRASS
FINISH	SCALE	205408-2
SEE CALLOUTS	SCALE 4:1	205408-1
		PART NO

CUSTOMER DRAWING