



Chipsmall Limited consists of a professional team with an average of over 10 year of expertise in the distribution of electronic components. Based in Hongkong, we have already established firm and mutual-benefit business relationships with customers from,Europe,America and south Asia,supplying obsolete and hard-to-find components to meet their specific needs.

With the principle of "Quality Parts,Customers Priority,Honest Operation,and Considerate Service",our business mainly focus on the distribution of electronic components. Line cards we deal with include Microchip,ALPS,ROHM,Xilinx,Pulse,ON,Everlight and Freescale. Main products comprise IC,Modules,Potentiometer,IC Socket,Relay,Connector.Our parts cover such applications as commercial,industrial, and automotives areas.

We are looking forward to setting up business relationship with you and hope to provide you with the best service and solution. Let us make a better world for our industry!



Contact us

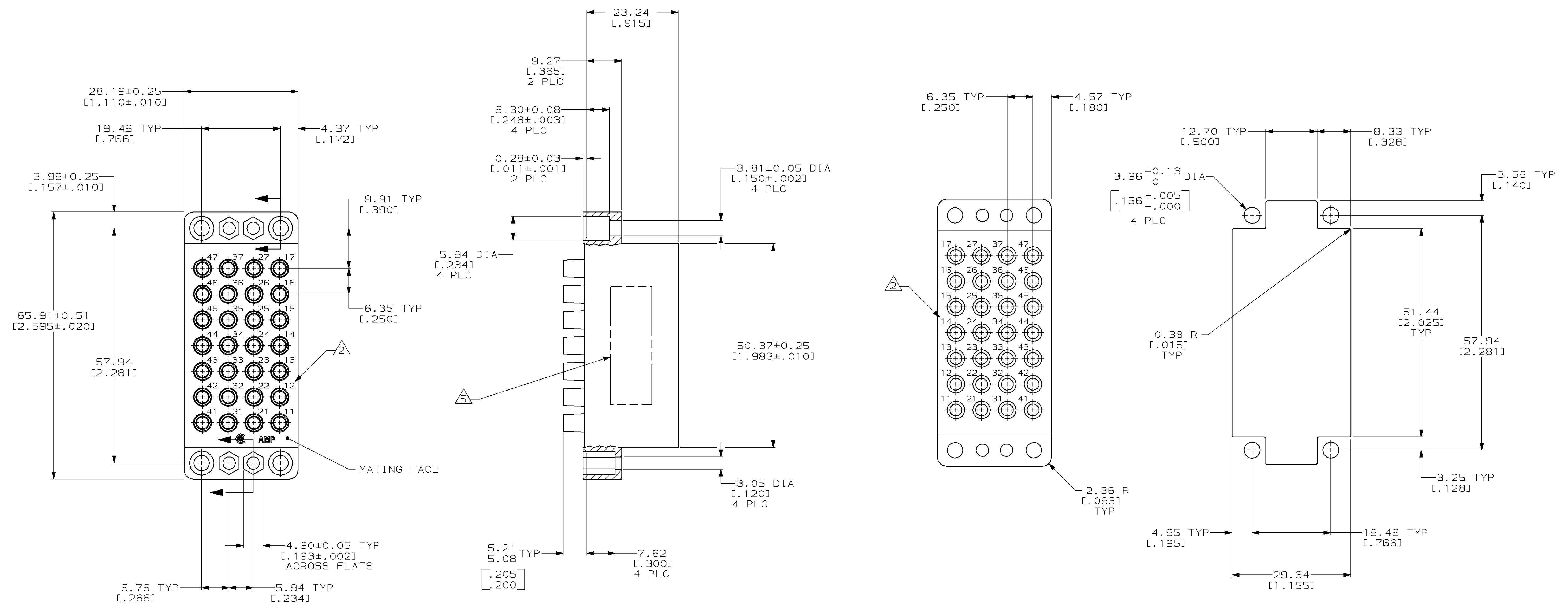
Tel: +86-755-8981 8866 Fax: +86-755-8427 6832

Email & Skype: info@chipsmall.com Web: www.chipsmall.com

Address: A1208, Overseas Decoration Building, #122 Zhenhua RD., Futian, Shenzhen, China



LOC		DIST		REVISIONS			
P	LTR	DESCRIPTION	DATE	OWN	APVD		
E		REDRAWN W/O CHANGE PER EC 0020-289-96	23 MAY 97	-	-		
F		REV PER EC 0320-348-97	18 NOV 97	PB	GS		



RECOMMENDED PANEL CUTOUT

- △ PHENOLIC, BLACK, PER MIL-M-14, TYPE CFG.
- △ CAVITY IDENTIFICATION, RAISED, BOTH FACES.
- 3. CONNECTOR WILL ACCEPT 28 TYPE II OR III+, SIZE 16, SOCKET CONTACTS.
- 4. CONNECTOR MATES WITH HOUSING 205689-2.
- △ PART NUMBER, DATE CODE OPTIONAL, MARKED IN THIS APPROXIMATE AREA.

205690-2
 PART NUMBER

THIS DRAWING IS A CONTROLLED DOCUMENT.		OWN D. HARDY	23 MAY 97	AMP AMP AMP Incorporated Harrisburg, PA 17105-3508
DIMENSIONS: mm (INCHES)		CHK R. STONE	26 JUN 97	
TOLERANCES UNLESS OTHERWISE SPECIFIED:		APP'D G. STEINHAUER	02 SEP 97	NAME BLOCK, SOCKET, 28 POSITION, SPECIAL, M SERIES
0 PLC ±.005		PRODUCT SPEC		
1 PLC ±.005		APPLICATION SPEC		SIZE A1
2 PLC ±.010		WEIGHT		CAGE CODE 00779
3 PLC ±.015		RESTRICTED TO		DRAWING NO. 205690
4 PLC ±.020		CUSTOMER DRAWING		SCALE 2:1
ANGLES ±.005		SHEET 1 OF 1		REV F
FINISH		SCALE		