



Chipsmall Limited consists of a professional team with an average of over 10 year of expertise in the distribution of electronic components. Based in Hongkong, we have already established firm and mutual-benefit business relationships with customers from,Europe,America and south Asia,supplying obsolete and hard-to-find components to meet their specific needs.

With the principle of “Quality Parts,Customers Priority,Honest Operation,and Considerate Service”,our business mainly focus on the distribution of electronic components. Line cards we deal with include Microchip,ALPS,ROHM,Xilinx,Pulse,ON,Everlight and Freescale. Main products comprise IC,Modules,Potentiometer,IC Socket,Relay,Connector.Our parts cover such applications as commercial,industrial, and automotives areas.

We are looking forward to setting up business relationship with you and hope to provide you with the best service and solution. Let us make a better world for our industry!



Contact us

Tel: +86-755-8981 8866 Fax: +86-755-8427 6832

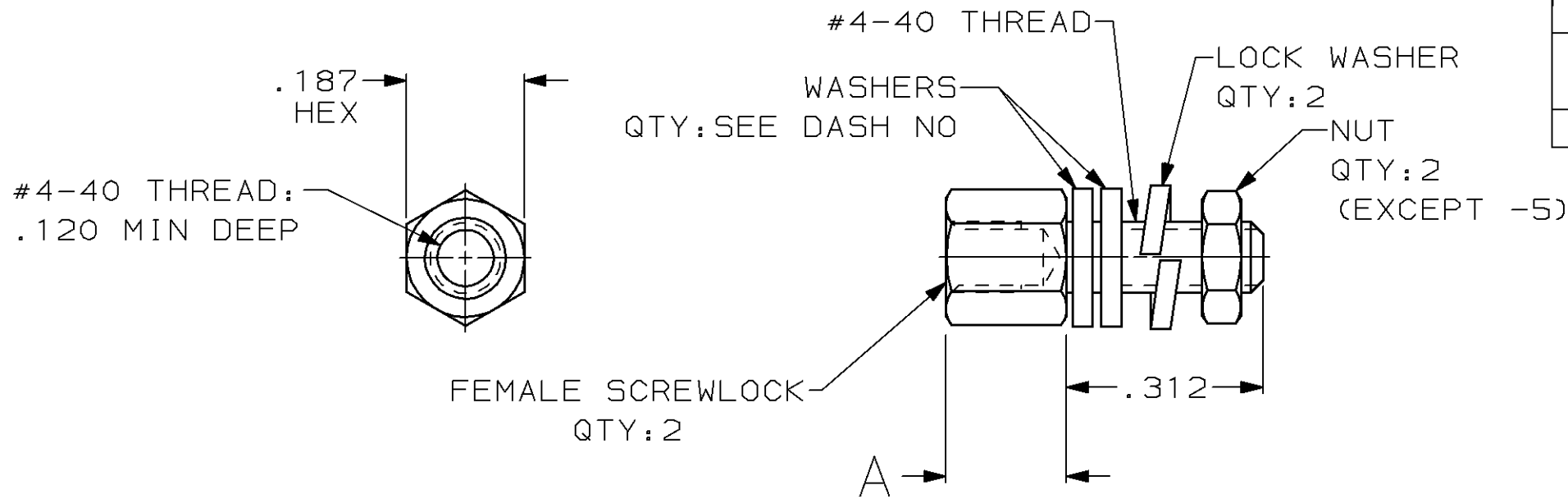
Email & Skype: info@chipsmall.com Web: www.chipsmall.com

Address: A1208, Overseas Decoration Building, #122 Zhenhua RD., Futian, Shenzhen, China



THIS DRAWING IS UNPUBLISHED. RELEASED FOR PUBLICATION, 19
 © COPYRIGHT 19 BY AMP INCORPORATED. ALL INTERNATIONAL RIGHTS RESERVED.

LOC	DIST	P	F	ZONE	LTR	DESCRIPTION	DATE	APPD
BD	48				F1	ADDED 1--2 PER NPR 4839	07/07/93	NB
					G	OBS 1-1 PER EC 0020-1514-93	04/15/94	LF
					H	OBSOLETE -9 PER EC 0020-667-95	02 FEB 96	CS
					J	OBS -12 PER EC 0420-141-96	17 SEPT 97	SB



- ① ZINC PLATED PER ASTM B633, TYPE II, CLASS SCI, YELLOW CHROMATE.
- ② ZINC PLATED PER ASTM B633, TYPE III, CLASS SCI, CLEAR CHROMATE.
- 3. PARTS PACKAGED UNASSEMBLED.
- ④ PARTS PACKED AS A UNIT KIT.
- ⑤ PARTS INDIVIDUALLY BULK PACKED & SHIPPED AS A UNIT PACKAGE.
- 6. IDENTIFIED BY MIL SPEC PART NUMBER M24308/26-01 FOR -8 ONLY & AMP PART NUMBER (FOR ALL DASH NUMBERS).
- ⑦ SMALL PACK PACKAGING.

OBSOLETE	⑦	4	.188	①	1-205817-2
OBSOLETE	⑤	0	.188	②	1-205817-1
OBSOLETE	⑤	0	.188	②	1-205817-0
OBSOLETE	⑤	6	.188	①	205817-9
	④	6	.188	①	205817-8
OBSOLETE	⑤	4	.191±.002	①	205817-7
OBSOLETE	④	4	.191±.002	①	205817-6
	⑤	2	.188	②	205817-5
	⑤	4	.188	②	205817-4
	④	4	.188	②	205817-3
	⑤	4	.188	①	205817-2
	④	4	.188	①	205817-1
		NO OF WASHERS	A	FINISH	PART NUMBER

DO NOT SCALE PRINT, UNLESS SPECIFIED DIMENSIONS IN INCHES TOLERANCES ON: 2 PLC DEC ± - 3 PLC DEC ± .005 ANGLES ± -	DR 4-11-90 J GALLUCCI BG	AMP AMP INCORPORATED Harrisburg, Pa. 17105			
	CHK 6-15-90 W G LENKER				
	MATERIAL COLD ROLLED STEEL PER ASTM A108	APPD 7-11-90 J E WESTMAN	NAME KIT, SCREWLOCK, FEMALE, AMPLIMITE™ HD-20		
	FINISH SEE TABLE	APPD 7-16-90 J ASSINI	PRODUCT SPEC -	SIZE B	FSCM NO 00779
	WEIGHT -	APPLICATION SPEC -	SCALE 4:1	SHEET 1 OF 1	