



Chipsmall Limited consists of a professional team with an average of over 10 year of expertise in the distribution of electronic components. Based in Hongkong, we have already established firm and mutual-benefit business relationships with customers from,Europe,America and south Asia,supplying obsolete and hard-to-find components to meet their specific needs.

With the principle of “Quality Parts,Customers Priority,Honest Operation,and Considerate Service”,our business mainly focus on the distribution of electronic components. Line cards we deal with include Microchip,ALPS,ROHM,Xilinx,Pulse,ON,Everlight and Freescale. Main products comprise IC,Modules,Potentiometer,IC Socket,Relay,Connector.Our parts cover such applications as commercial,industrial, and automotives areas.

We are looking forward to setting up business relationship with you and hope to provide you with the best service and solution. Let us make a better world for our industry!



Contact us

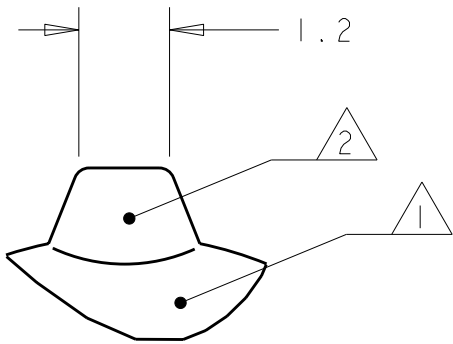
Tel: +86-755-8981 8866 Fax: +86-755-8427 6832

Email & Skype: info@chipsmall.com Web: www.chipsmall.com

Address: A1208, Overseas Decoration Building, #122 Zhenhua RD., Futian, Shenzhen, China

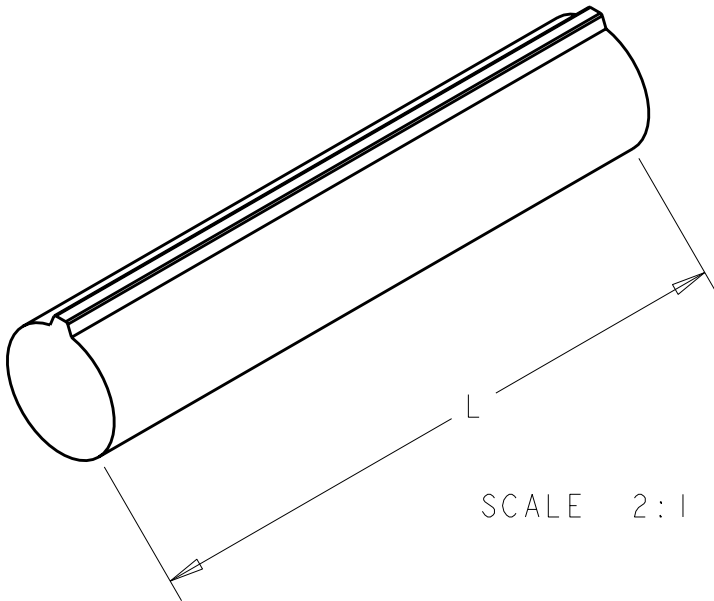
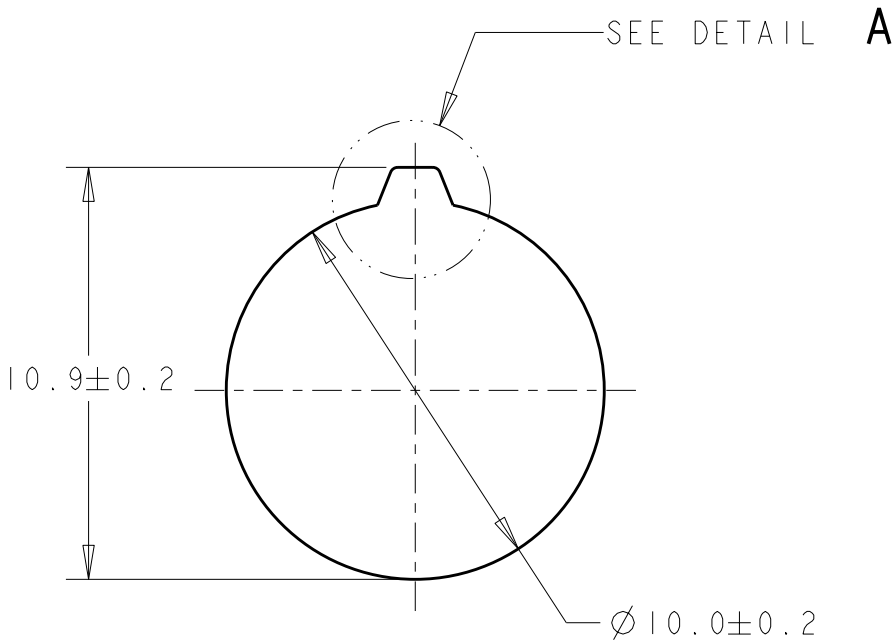


LOC	DIST	REVISIONS					
		P	LTR	DESCRIPTION	DATE	DWN	APVD
-	-		1	DRAWN	23APR2008	RB	CG
			2	REDUCED LENGTH TOLS ON -1.-2,-3,-4.-10	19AUG2008	RB	CG
			3	ADDED -11	01JUN2009	CD	CG



DETAIL A
SCALE 10:1

- 1 MAT'L: CLEAR AREA: CLEAR OPTICAL ACRYLIC.
- 2 MAT'L: WHITE AREA: WHITE ACRYLIC.



400±10	1-2058295-1
178±10	1-2058295-0
1250±20	2058295-9
3000±20	2058295-8
2000±20	2058295-7
1000±20	2058295-6
760±20	2058295-5
610±10	2058295-4
460±10	2058295-3
305±10	2058295-2
150±10	2058295-1
L (mm)	TE P/N

TYCO ELECTRONICS
CONFIDENTIAL
AND PROPRIETARY

PROPOSED DESIGN
NOT PRODUCTION TOOLED

DESIGN IS SUBJECT TO
CHANGE WITHOUT NOTICE

THIS DRAWING IS A CONTROLLED DOCUMENT FOR TYCO ELECTRONICS CORPORATION IT IS SUBJECT TO CHANGE AND THE CONTROLLING ENGINEERING ORGANIZATION SHOULD BE CONTACTED FOR THE LATEST REVISION.		DWN R BROWN 23APR2008	Tyco Electronics Harrisburg, PA 17105-3608			
		CHK C GINGRICH 23APR2008				
		APVD C GINGRICH 23APR2008	NAME CO-EXTRUSION, LIGHTPIPE, 10mm, RAW			
DIMENSIONS: mm		PRODUCT SPEC				
		APPLICATION SPEC				
		WEIGHT				
MATERIAL		FINISH	A300779C-2058295			
			CUSTOMER DRAWING			
			SCALE 5:1	SHEET 1	OF 1	REV 3