



Chipsmall Limited consists of a professional team with an average of over 10 year of expertise in the distribution of electronic components. Based in Hongkong, we have already established firm and mutual-benefit business relationships with customers from,Europe,America and south Asia,supplying obsolete and hard-to-find components to meet their specific needs.

With the principle of “Quality Parts,Customers Priority,Honest Operation,and Considerate Service”,our business mainly focus on the distribution of electronic components. Line cards we deal with include Microchip,ALPS,ROHM,Xilinx,Pulse,ON,Everlight and Freescale. Main products comprise IC,Modules,Potentiometer,IC Socket,Relay,Connector.Our parts cover such applications as commercial,industrial, and automotives areas.

We are looking forward to setting up business relationship with you and hope to provide you with the best service and solution. Let us make a better world for our industry!



Contact us

Tel: +86-755-8981 8866 Fax: +86-755-8427 6832

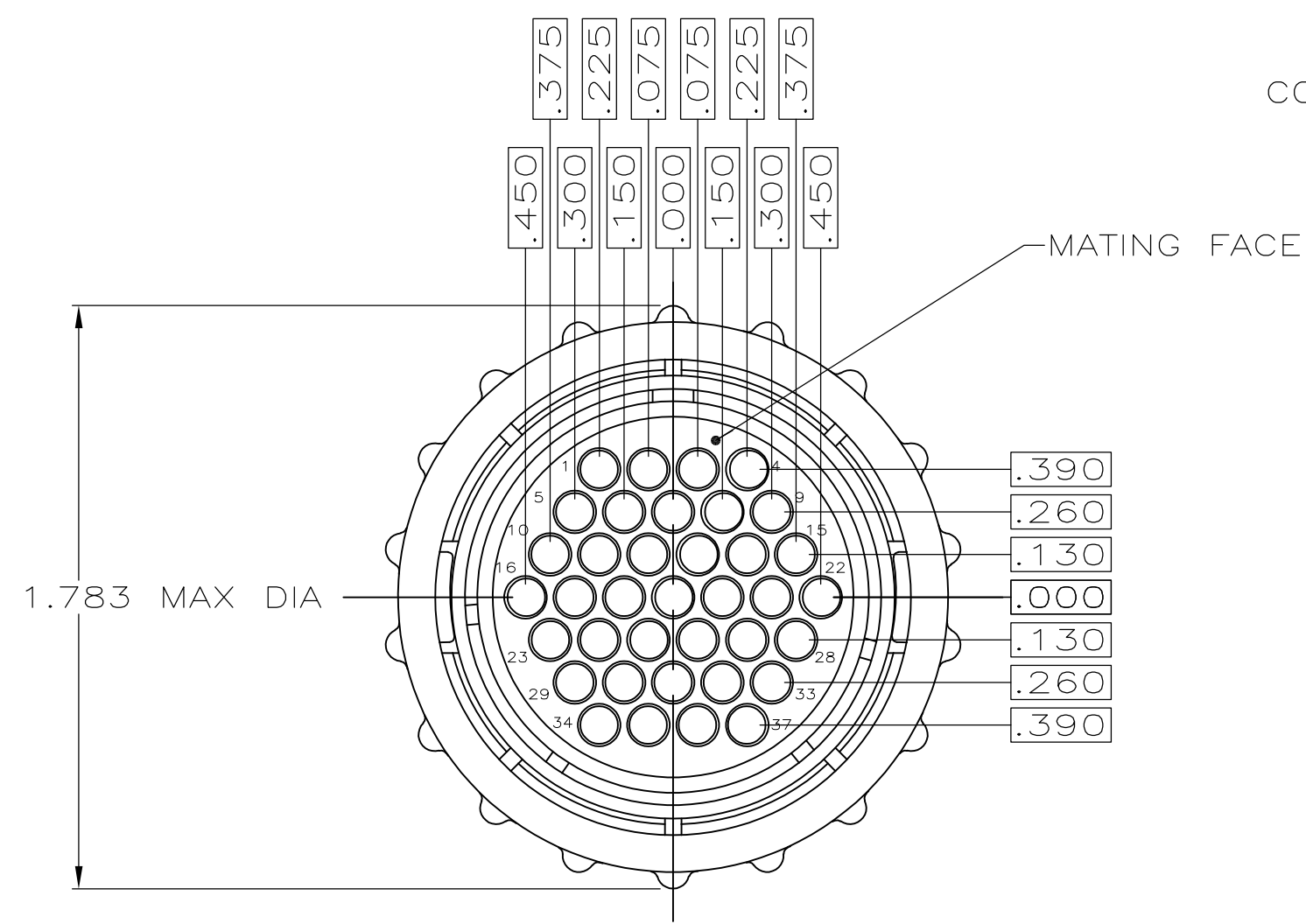
Email & Skype: info@chipsmall.com Web: www.chipsmall.com

Address: A1208, Overseas Decoration Building, #122 Zhenhua RD., Futian, Shenzhen, China



THIS DRAWING IS UNPUBLISHED. RELEASED FOR PUBLICATION
 © COPYRIGHT - By - ALL RIGHTS RESERVED.

LOC		DIST		REVISIONS			
P	LTR	DESCRIPTION	DATE	DWN	APVD		
FT	0						
G2		REVISE PER ECO-11-004587	11MAR11	RK	HMR		

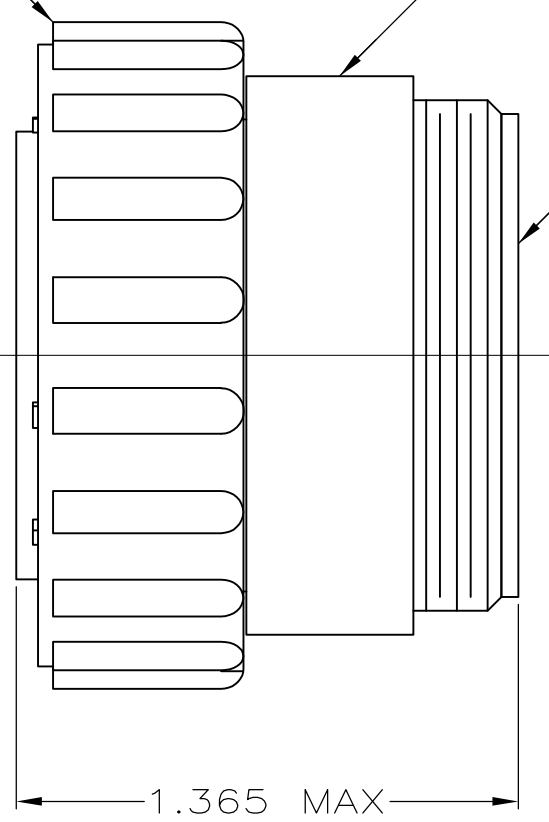


COUPLING RING
POLYESTER

AMP & PART NUMBER
THIS DIA

PLUG HOUSING
NYLON 6/6,
GLASS FILLED

(-1, -2 & -5 ONLY)

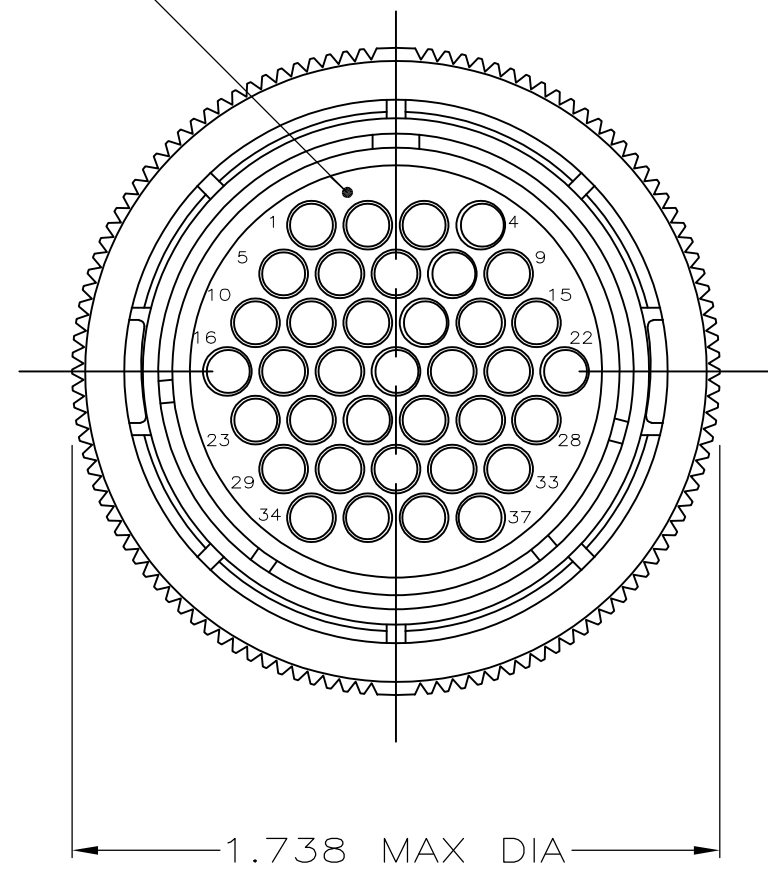
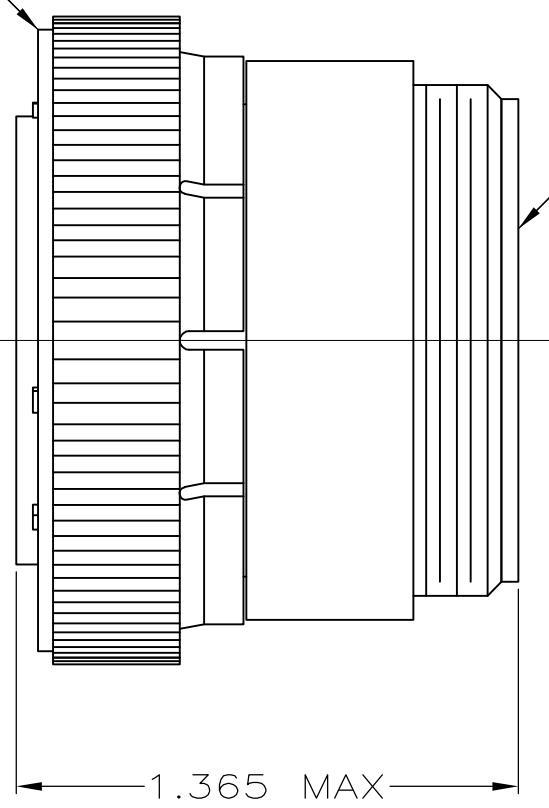


MATING FACE

COUPLING RING
POLYOHENYLENE

PLUG HOUSING
NYLON 6/6,
GLASS FILLED,

(-4 ONLY)



- 1. CONTACT CAVITIES IDENTIFIED BY CHARACTERS ON FRONT AND REAR FACES OF CONNECTOR.
- 2. WILL ACCEPT (37) MULTIMATE PIN CONTACTS.
- 3. PRELIMINARY PART NUMBER.
- 4. OBSOLETE PARTS: OBSOLETE CIS STREAMLINING PER D.RENAUD/D.SINISI

3	NATURAL	STANDARD	206305-5
	BLACK	STANDARD	206305-4
4	OBSOLETE	BLACK	SMALL PACK
		BLACK	STANDARD
	COLOR	PACKAGING	PART NUMBER

THIS DRAWING IS A CONTROLLED DOCUMENT.		DWN	S.RIDGLEY	BG	8/2/90	TE TE Connectivity	
DIMENSIONS: INCHES		CHK	R.STONE		4-26-91		
TOLERANCES UNLESS OTHERWISE SPECIFIED:		APVD	J.FULPONI		5-2-91	NAME	
0 PLC ± -		PRODUCT SPEC				PLUG ASSEMBLY, SHELL	
1 PLC ± -		APPLICATION SPEC				SIZE 23, REVERSE SEX,	
2 PLC ± -						SERIES 1, CPC	
3 PLC ± .005		WEIGHT	-			SIZE	CAGE CODE
4 PLC ± -		CUSTOMER DRAWING				DRAWING NO	RESTRICTED TO
ANGLES ± -		SCALE	2:1			SHEET	1 of 1
FINISH		REV	G2				
SEE CALLOUT		A2 00779 C=206305					