



Chipsmall Limited consists of a professional team with an average of over 10 year of expertise in the distribution of electronic components. Based in Hongkong, we have already established firm and mutual-benefit business relationships with customers from,Europe,America and south Asia,supplying obsolete and hard-to-find components to meet their specific needs.

With the principle of “Quality Parts,Customers Priority,Honest Operation,and Considerate Service”,our business mainly focus on the distribution of electronic components. Line cards we deal with include Microchip,ALPS,ROHM,Xilinx,Pulse,ON,Everlight and Freescale. Main products comprise IC,Modules,Potentiometer,IC Socket,Relay,Connector.Our parts cover such applications as commercial,industrial, and automotives areas.

We are looking forward to setting up business relationship with you and hope to provide you with the best service and solution. Let us make a better world for our industry!



## Contact us

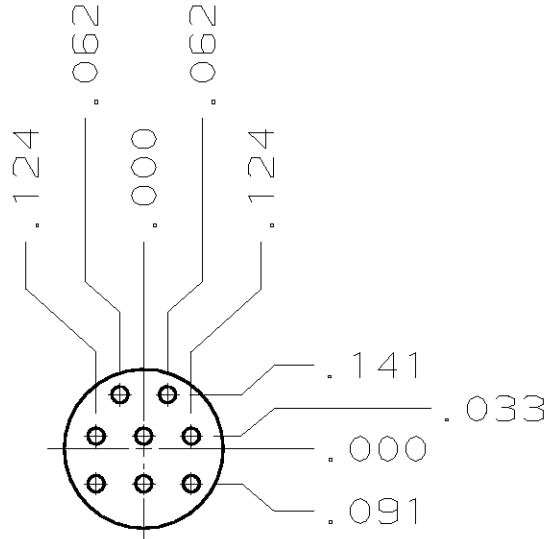
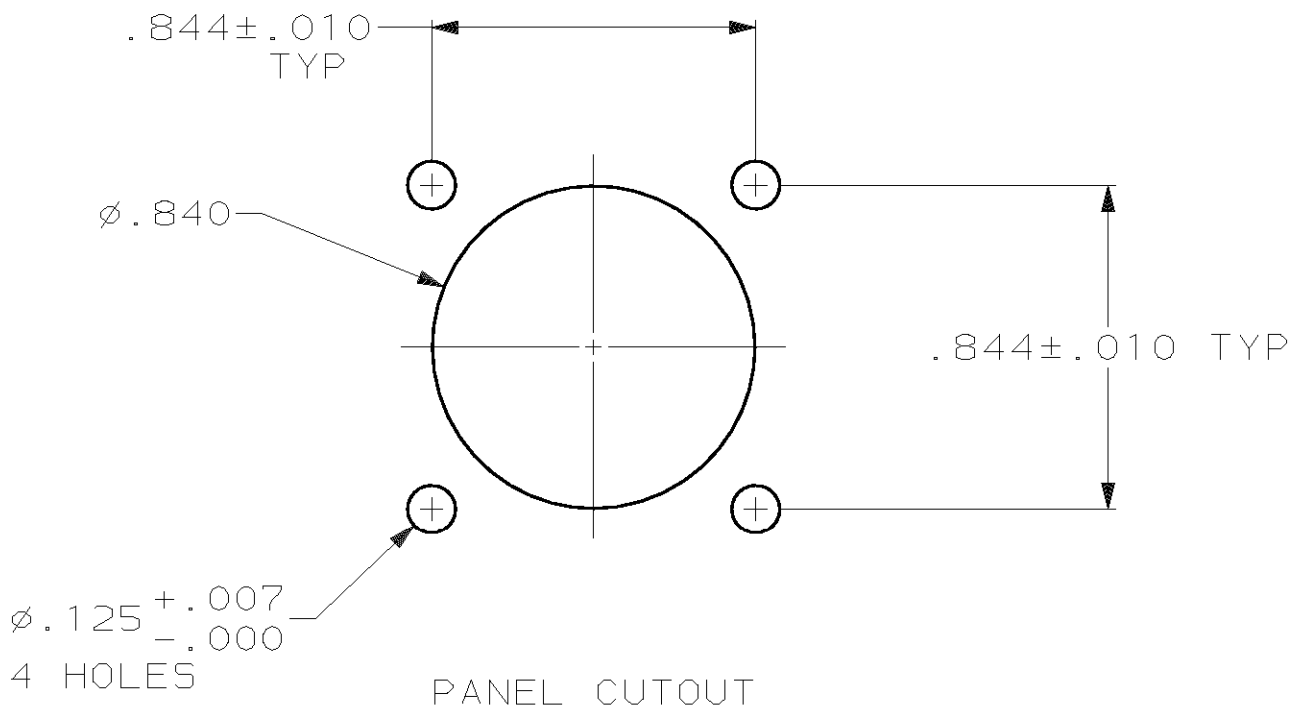
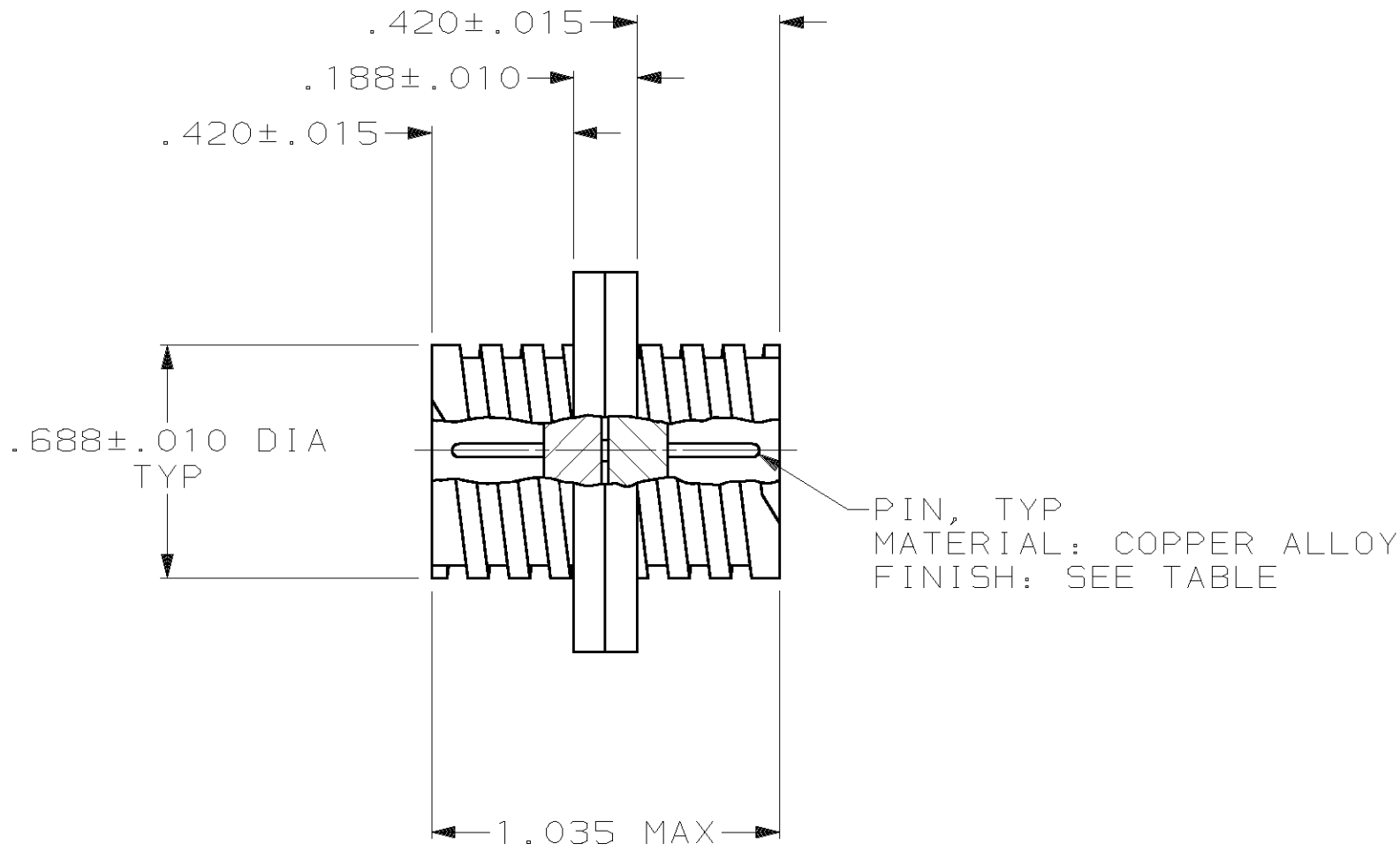
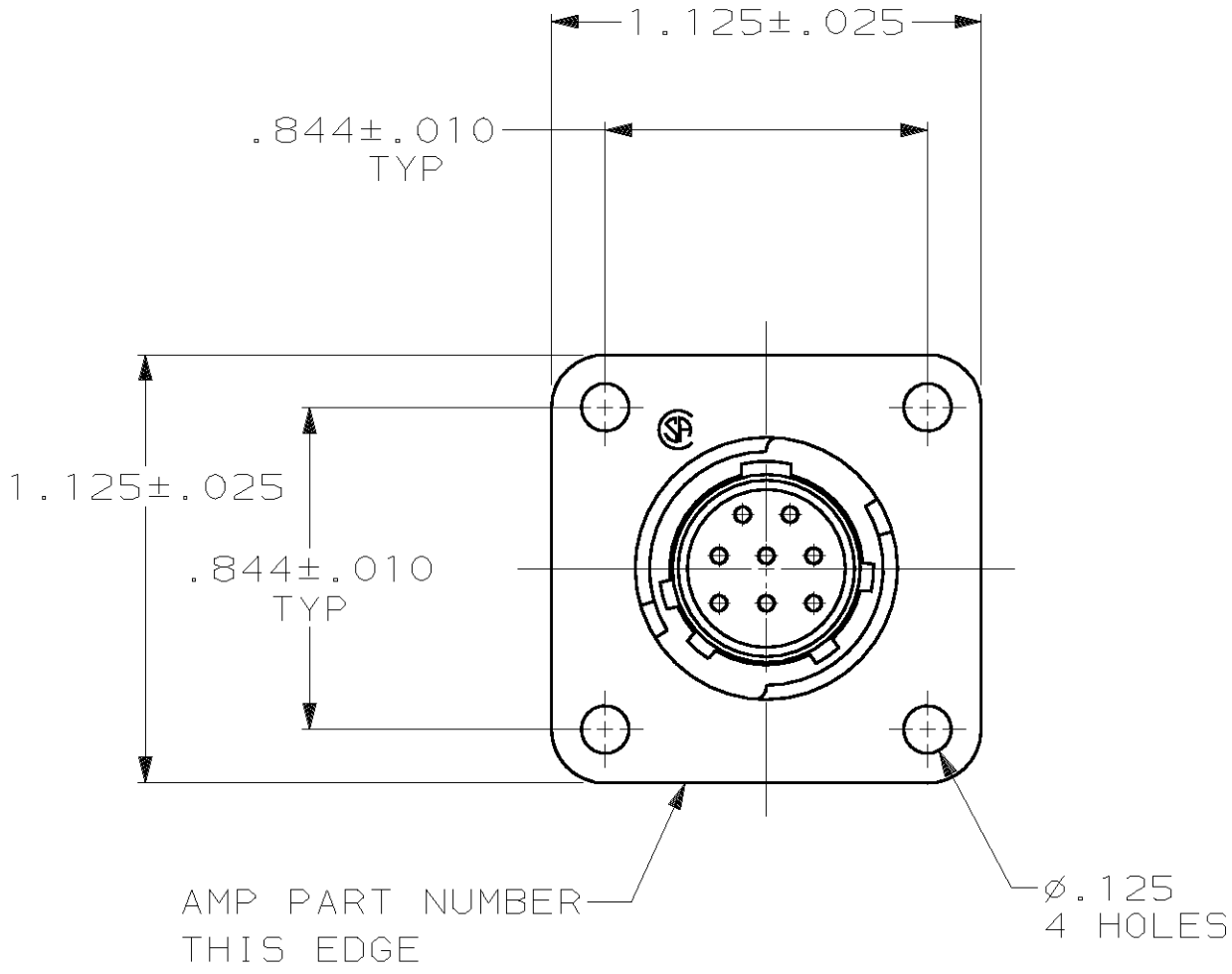
Tel: +86-755-8981 8866 Fax: +86-755-8427 6832

Email & Skype: [info@chipsmall.com](mailto:info@chipsmall.com) Web: [www.chipsmall.com](http://www.chipsmall.com)

Address: A1208, Overseas Decoration Building, #122 Zhenhua RD., Futian, Shenzhen, China



LOC		DIST				REVISIONS			
FT	0	P	F	ZONE	LTR	DESCRIPTION		DATE	APPD
					E	REVISE PER ECN 0G3B-0261-00		13JUL00	SU/MC



- 1 GOLD PER MIL-G-45204 OVER NICKEL PER QQ-N-290.
- 2 TIN PER MIL-T-10727.
- 3 ACCOMODATES 8 SIZE 20 PIN CONTACTS, PERMANENTLY INSTALLED.

OBSOLETE	2	206458-2
	1	206458-1
	CONTACT FINISH	PART NUMBER

DO NOT SCALE PRINT. UNLESS SPECIFIED DIMENSIONS IN INCHES TOLERANCES ON : 2 PLC DEC ± - 3 PLC DEC ± .005 ANGLES ± -		DR 5-21-91 J GALLUCCI BG	<b>AMP</b> AMP Incorporated Harrisburg, PA 17105-3608	
RCPT: THERMOPLASTIC COLOR: BLACK		CHK 4-13-92 W.G.LENKER		
FINISH SEE TABLE		APPD 4-13-92 K.BEAVER	NAME  RECEPTACLE ASSEMBLY, FEED THRU, SERIES 2, 11-8, CPC	
		APPD 4-13-92 C.ROHDE		
		PRODUCT SPEC 108-10024		
		APPLICATION SPEC -	SIZE C	CAGE CODE 00779
		WEIGHT -	SCALE 2:1	DRAWING NO 206458
				SHEET 1 OF 1