



Chipsmall Limited consists of a professional team with an average of over 10 year of expertise in the distribution of electronic components. Based in Hongkong, we have already established firm and mutual-benefit business relationships with customers from,Europe,America and south Asia,supplying obsolete and hard-to-find components to meet their specific needs.

With the principle of “Quality Parts,Customers Priority,Honest Operation,and Considerate Service”,our business mainly focus on the distribution of electronic components. Line cards we deal with include Microchip,ALPS,ROHM,Xilinx,Pulse,ON,Everlight and Freescale. Main products comprise IC,Modules,Potentiometer,IC Socket,Relay,Connector.Our parts cover such applications as commercial,industrial, and automotives areas.

We are looking forward to setting up business relationship with you and hope to provide you with the best service and solution. Let us make a better world for our industry!



Contact us

Tel: +86-755-8981 8866 Fax: +86-755-8427 6832

Email & Skype: info@chipsmall.com Web: www.chipsmall.com

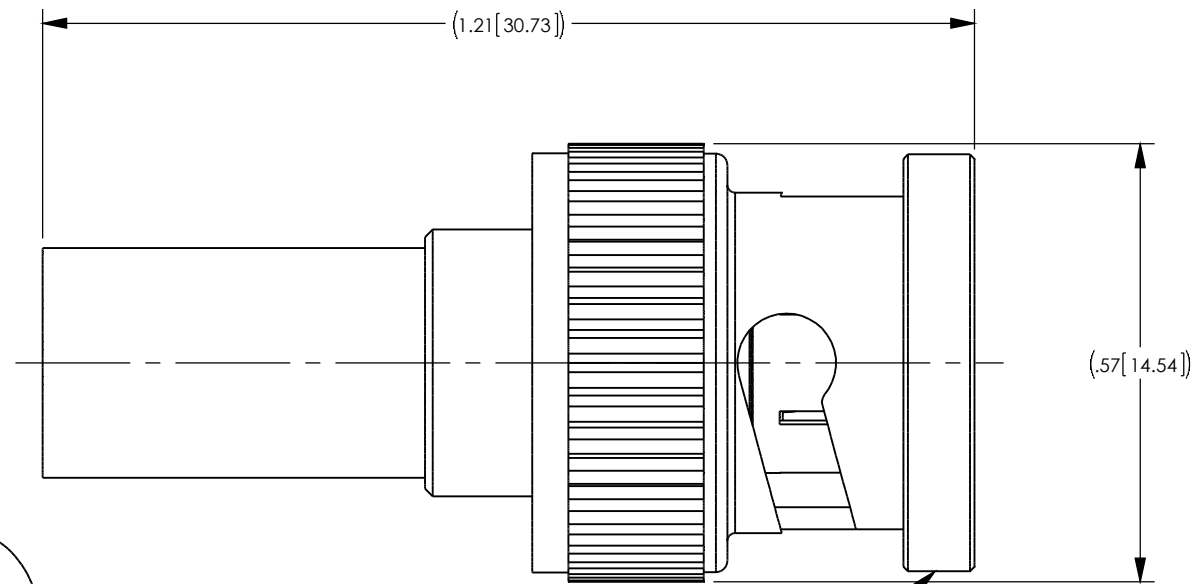
Address: A1208, Overseas Decoration Building, #122 Zhenhua RD., Futian, Shenzhen, China



NOTES: UNLESS OTHERWISE SPECIFIED



1. FOR USE WITH BELDEN 9529, 1505A & 1805F CABLES.
2. FOR CABLING INSTRUCTIONS SEE 3-661-1.
3. FOR CABLE TRIMMING USE KTJ-57 & KTD-26.
4. FOR CRIMPING USE DIE KTH-2261.
5. INTERFACE PER KINGS ES-17, FIG. 6
6. MATERIAL SPECIFICATIONS:
INSULATOR: TEFLON, ASTM-D-4894 OR ASTM D1710
GASKET: SILICONE RUBBER, A-A-59588
SPRING WASHER, OUTER CONTACT: BERYLLIUM COPPER PER ASTM B196
K-GRIP SLEEVE: COMMERCIAL BRONZE, ASTM B135
ALL OTHER METAL PARTS: BRASS PER ASTM B16
7. FINISH SPECIFICATIONS:
CENTER CONTACT: GOLD PLATE PER MIL-G-45204
SPRING WASHER: SILVER PLATE PER QQ-S-365 OR NICKEL PLATE PER QQ-N-290
ALL OTHER METAL PARTS: NICKEL PLATE PER QQ-N-290
8. ELECTRICAL SPECIFICATIONS:
IMPEDANCE: 75 OHMS
WORKING VOLTAGE: 500 VOLTS RMS
FREQUENCY RANGE: DC - 12 GHz
RETURN LOSS: -30dB MAX TO 3.0 GHz
-20dB MAX TO 6.0 GHz
9. COMPLIANT TO 3G/6G/12G SDI SMPTE REQUIREMENTS.

REV	DESCRIPTION	BY DATE	APPD
P	ER057798	04/10/15 JF	YA



MARK: KINGS 2065-2-9 (DATE CODE)

CATALOG P/N: 2065-2-9

PER ASME Y14.5M-1994 UNLESS OTHERWISE SPECIFIED: DIMENSIONS ARE IN INCHES [MM] TOLERANCES: DECIMAL: .XX [X.X] ± .01 [0.25] .XXX [X.XX] ± .004 [0.10] .XXXX [X.XXX] ± .XXXX ANGLES: ± 2° SCALE: 4:1				<div> KINGS® by WINCHESTER ELECTRONICS</div> <div>Winchester Electronics Corporation 199 Park Road Ext Suite 104 Middlebury, Connecticut 06762</div>				
CUSTOMER SALES DRAWING			THIRD ANGLE 	75 OHM BNC PLUG FOR BELDEN 1505A OR EQUIVALENT CABLE (RoHS)				
DRAWN	DATE	APPROVED	DATE	A	SD2065-2-9	SHT 1	OF 1	REV P
TML	01/11/99	DCT	01/11/99					
APPROVED	DATE	APPROVED	DATE					
XXX	XX/XX/XX	XXX	XX/XX/XX					