



Chipsmall Limited consists of a professional team with an average of over 10 year of expertise in the distribution of electronic components. Based in Hongkong, we have already established firm and mutual-benefit business relationships with customers from,Europe,America and south Asia,supplying obsolete and hard-to-find components to meet their specific needs.

With the principle of “Quality Parts,Customers Priority,Honest Operation,and Considerate Service”,our business mainly focus on the distribution of electronic components. Line cards we deal with include Microchip,ALPS,ROHM,Xilinx,Pulse,ON,Everlight and Freescale. Main products comprise IC,Modules,Potentiometer,IC Socket,Relay,Connector.Our parts cover such applications as commercial,industrial, and automotives areas.

We are looking forward to setting up business relationship with you and hope to provide you with the best service and solution. Let us make a better world for our industry!



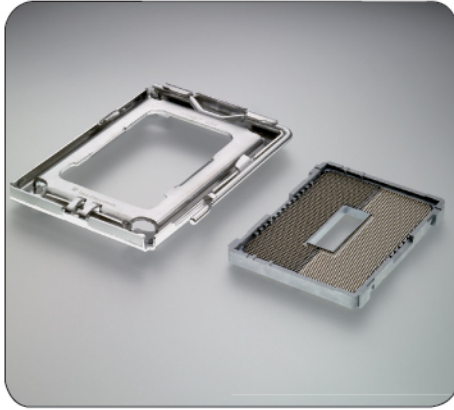
Contact us

Tel: +86-755-8981 8866 Fax: +86-755-8427 6832

Email & Skype: info@chipsmall.com Web: www.chipsmall.com

Address: A1208, Overseas Decoration Building, #122 Zhenhua RD., Futian, Shenzhen, China





Introducing LGA 1944 SOCKET

TE Connectivity's surface mount LGA 1944 socket is designed to comply to AMD's new high-performance Opteron 6000 series server processor. The contacts have 0.6 mm diameter solder balls for surface mount onto the PCB, while the top side provides a cantilever beam interface to the package. The socket actuation mechanism (SAM) generates the Z-axis compression load.

KEY FEATURES

- 1944 contacts with a 1.0mm x 1.0mm grid.
- Contacts have 30u" gold plating.
- Socket housing facilitates efficient soldering to the PCB board.
- Socket is supplied with a cap to facilitate vacuum pick and place. Spare caps can be ordered separately.
- Back plate is not supplied by TE Connectivity. Socket and SAM are designed for use with AMD bolster plate part number 49Z0000042.
- SAM and socket must be ordered separately.

APPLICATIONS

- Servers

ELECTRICAL

- Current rating: 1.17 amps
- Insulation resistance: 1000 megohms min. @ 100 VDC

MECHANICAL

- Durability: 50 cycles
- Mating and unmating force of lever: 4kgf max

MATERIALS

- Housing: LCP
- Contact: Copper alloy, Gold 30 plated
- Cap: Thermoplastic
- SAM: Stainless steel with thermoplastic standoffs

APPLICATIONS AND SPECIFICATION

- Application specification #114-5455
- Instruction sheet #411-78334
- Product specification #108-78631

PRODUCT OFFERING

SOCKET G34

Part Number	Description	Contact Plating	Solder Ball
2069189-1	LGA 1944 Socket	Gold (30)	Lead Free
2069189-2	LGA 1944 Socket	Gold (30)	Leaded
2069190-1	Socket Actuation Mechanism (SAM)		-
2069192-1	Spare socket cap		-
2134355-1	External Cover of SAM		



te.com/products/LGA-Sockets