



Chipsmall Limited consists of a professional team with an average of over 10 year of expertise in the distribution of electronic components. Based in Hongkong, we have already established firm and mutual-benefit business relationships with customers from,Europe,America and south Asia,supplying obsolete and hard-to-find components to meet their specific needs.

With the principle of "Quality Parts,Customers Priority,Honest Operation,and Considerate Service",our business mainly focus on the distribution of electronic components. Line cards we deal with include Microchip,ALPS,ROHM,Xilinx,Pulse,ON,Everlight and Freescale. Main products comprise IC,Modules,Potentiometer,IC Socket,Relay,Connector.Our parts cover such applications as commercial,industrial, and automotives areas.

We are looking forward to setting up business relationship with you and hope to provide you with the best service and solution. Let us make a better world for our industry!



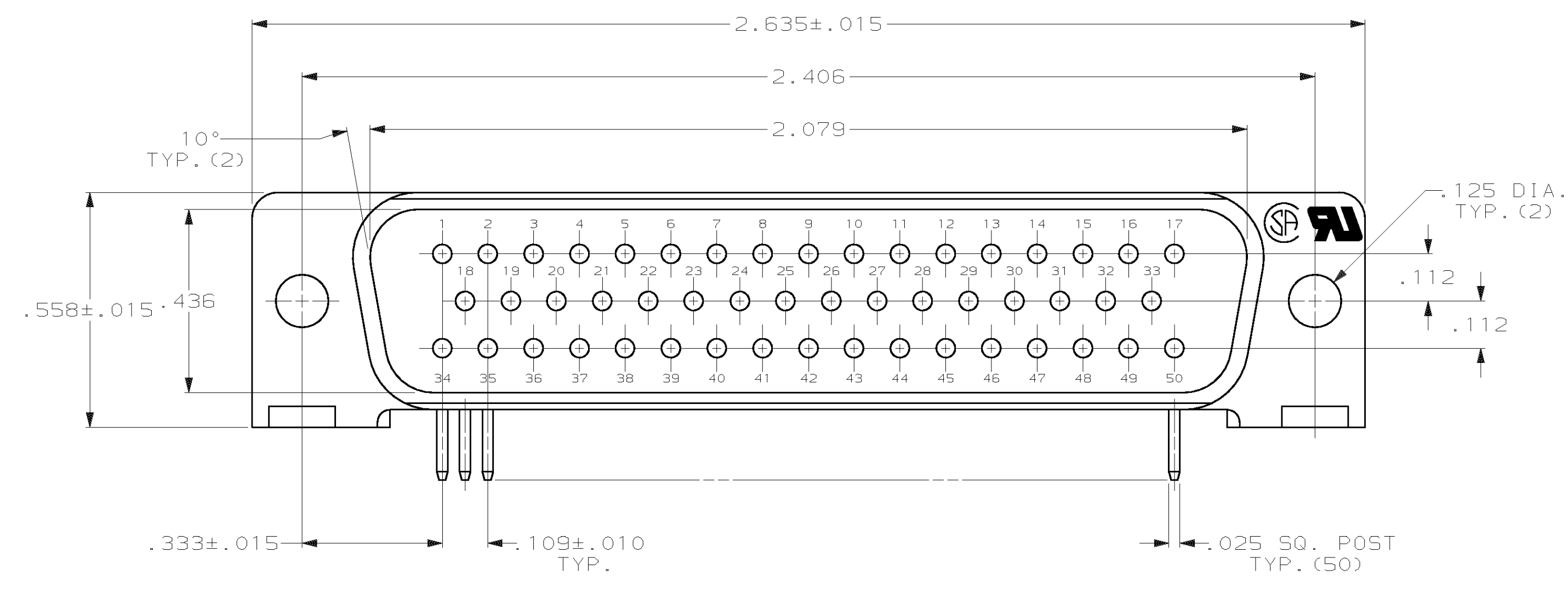
Contact us

Tel: +86-755-8981 8866 Fax: +86-755-8427 6832

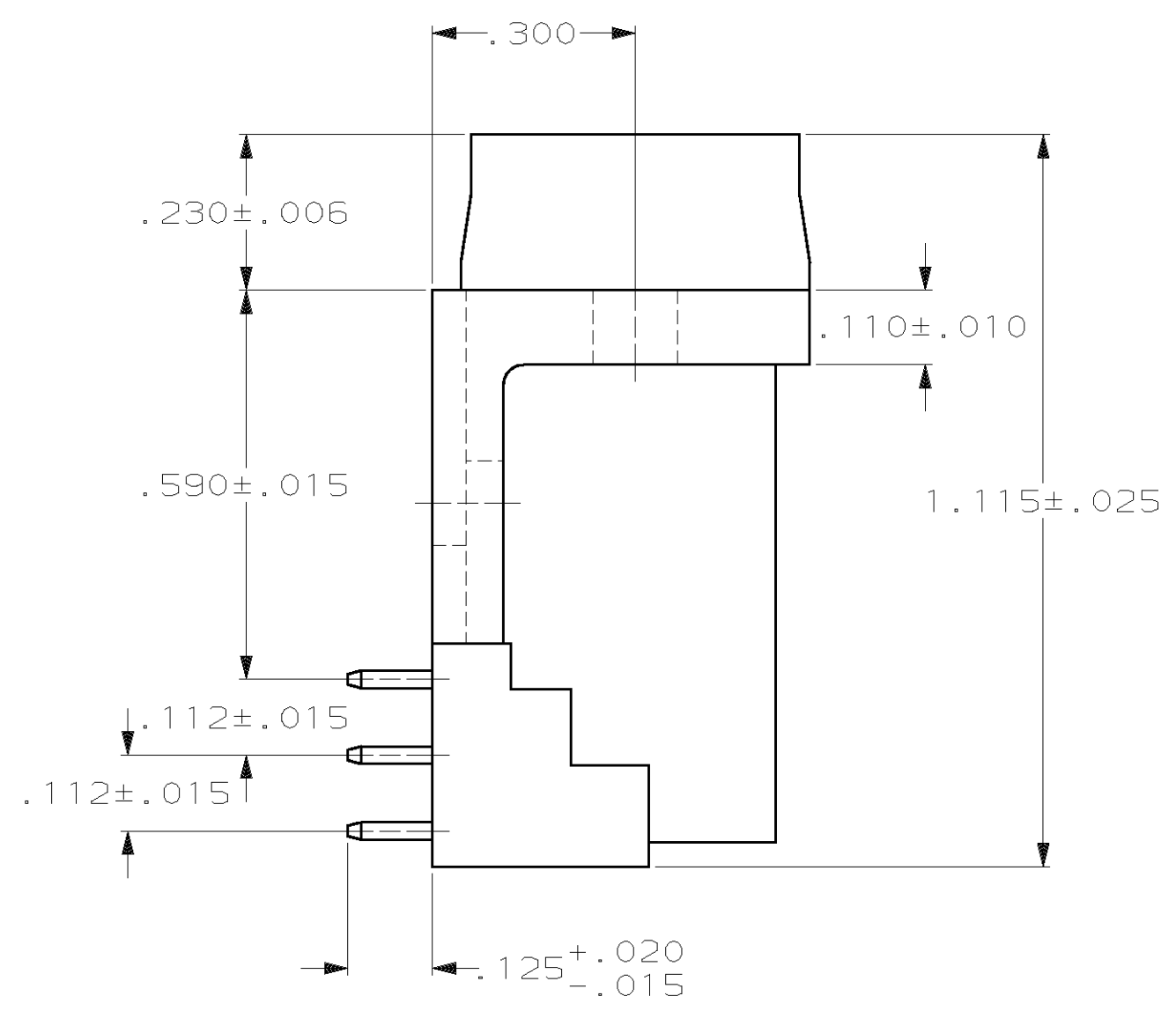
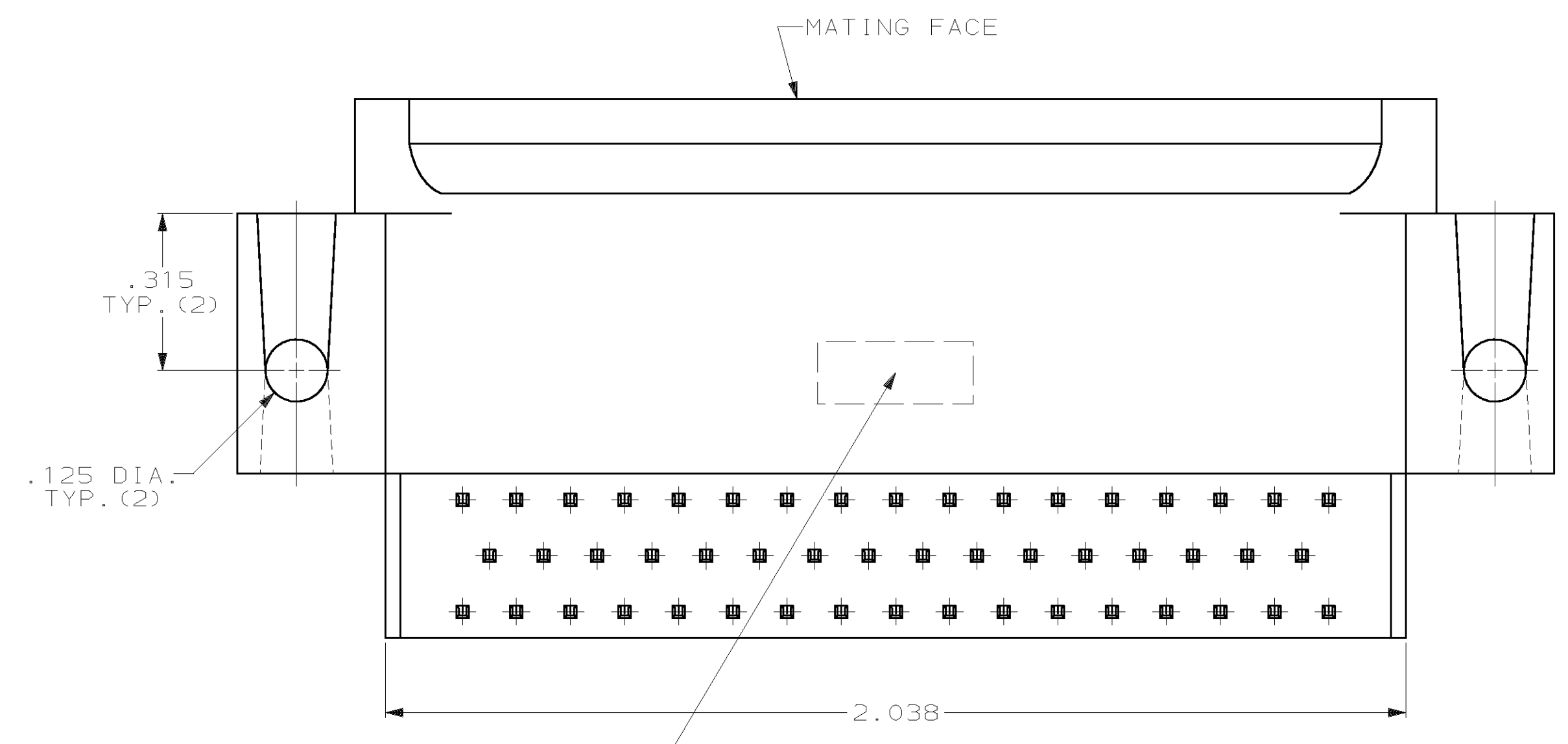
Email & Skype: info@chipsmall.com Web: www.chipsmall.com

Address: A1208, Overseas Decoration Building, #122 Zhenhua RD., Futian, Shenzhen, China

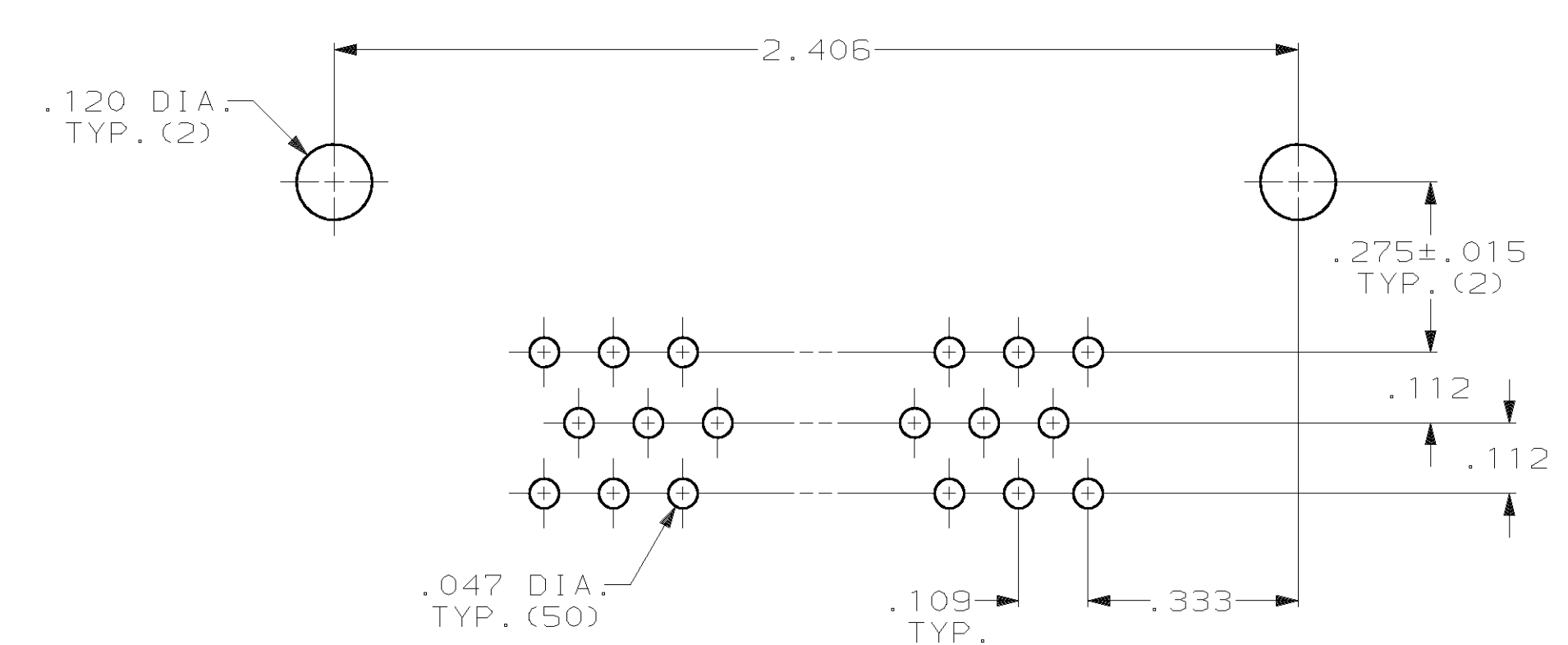




- CONNECTOR MATES WITH ANY 50 POS. RECEPTACLE IN AMPLIMITE SERIES & COMPLIES WITH AMP SPEC. 108-40,005 WHERE APPLICABLE.
- FLAME RETARDANT 94V-0 RATED THERMOPLASTIC; COLOR: BLACK.
- BRASS PER MIL-C-50.
- GOLD PLATING PER MIL-G-45204, TIN PLATING PER MIL-T-10727, NICKEL PLATING PER QQ-N-290.
- GOLD PLATED FOR LENGTH OF .150 MIN FROM MATING END, .000030 MIN GOLD IN MATED AREA, .000100 MIN TIN-LEAD ON OPPOSITE END, BOTH OVER .000050 MIN NICKEL.
- .000050 GOLD FOR LENGTH OF .150 MIN. FROM MATING END, GOLD FLASH ON REMAINDER, ALL OVER .000050 NICKEL ON ENTIRE CONTACT.
- GOLD PLATED FOR LENGTH OF .150 MIN FROM MATING END, GOLD FLASH IN MATED AREA, .000100 MIN TIN-LEAD ON OPPOSITE END, BOTH OVER .000050 MIN NICKEL.



"AMP", PART NO. & DATE CODE, STAMPED IN AREA INDICATED, ON FAR SIDE



P.C. BOARD MOUNTING DIMENSIONS

OBSOLETE	△	206971-5
OBSOLETE	△	206971-4
OBSOLETE	△	206971-3
	△	206971-2
	△	206971-1
CONTACT FINISH		PART NUMBER

THIS DRAWING IS A CONTROLLED DOCUMENT.		DWN: J. GERACE 6-8-84	AMP Incorporated Harrisburg, PA 17105-3608
DIMENSIONS INCHES		CHK: J. GERACE 6-8-84	
TOLERANCES UNLESS OTHERWISE SPECIFIED:		APPR: R. TAYLOR 6-21-84	NAME: PLUG ASSEMBLY, SIZE 5, 50 POS., RIGHT ANGLE, .590 SERIES, .025 SQ. POSTS, AMPLIMITE HDP
0 PLC ± .005		PRODUCT SPEC: -	
1 PLC ± .005		APPLICATION SPEC: -	SIZE: A1
2 PLC ± .005		FINISH: △	CAGE CODE: 00779
3 PLC ± .005		CONTACTS: SEE TABLE	DRAWING NO: 206971
4 PLC ± .005		RESTRICTED TO: -	SCALE: 4:1
MATERIAL: POLYMER		WEIGHT: -	SHEET: 1 OF 1
CONTACTS: △		CUSTOMER DRAWING	REV: L