



Chipsmall Limited consists of a professional team with an average of over 10 year of expertise in the distribution of electronic components. Based in Hongkong, we have already established firm and mutual-benefit business relationships with customers from,Europe,America and south Asia,supplying obsolete and hard-to-find components to meet their specific needs.

With the principle of “Quality Parts,Customers Priority,Honest Operation,and Considerate Service”,our business mainly focus on the distribution of electronic components. Line cards we deal with include Microchip,ALPS,ROHM,Xilinx,Pulse,ON,Everlight and Freescale. Main products comprise IC,Modules,Potentiometer,IC Socket,Relay,Connector.Our parts cover such applications as commercial,industrial, and automotives areas.

We are looking forward to setting up business relationship with you and hope to provide you with the best service and solution. Let us make a better world for our industry!



Contact us

Tel: +86-755-8981 8866 Fax: +86-755-8427 6832

Email & Skype: info@chipsmall.com Web: www.chipsmall.com

Address: A1208, Overseas Decoration Building, #122 Zhenhua RD., Futian, Shenzhen, China



LOC	DIST	REVISIONS					
AA	27	P	LTR	DESCRIPTION	DATE	DWN	APVD
			G	ECR-12-012675	01AUG2012	KR	OP

- 1

FITS STANDARD KNOCKOUT 23.01 [.906] 21.84 [.860] DIA.
- 2

PANEL RETENTION MECHANISM ACCOMMODATES PANEL THICKNESSES FROM 0.81 [.032] TO 2.31 [.091].
- 3

HOUSING: NYLON, BLACK.
INSERT: CARBON STEEL, 0.64 [.025] THICK.
- 4

INSERT: 15.24μm [.000600] MIN ZINC.

D

D

C

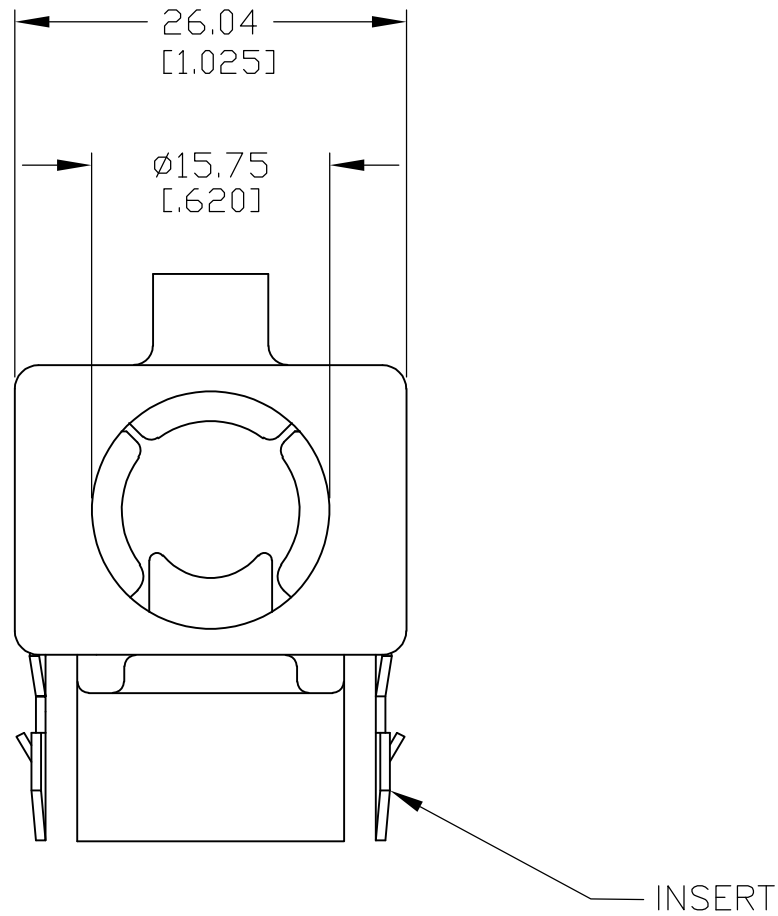
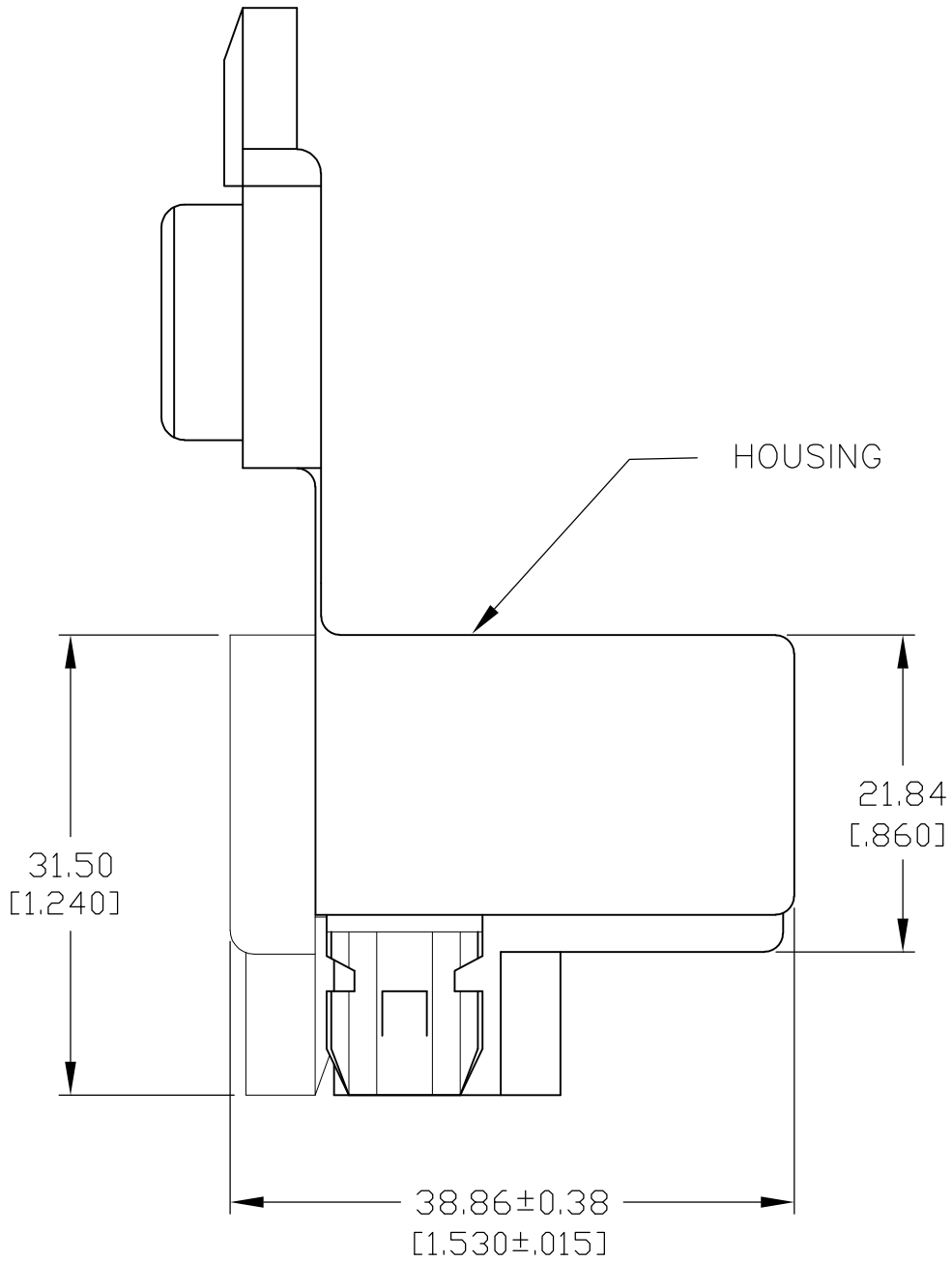
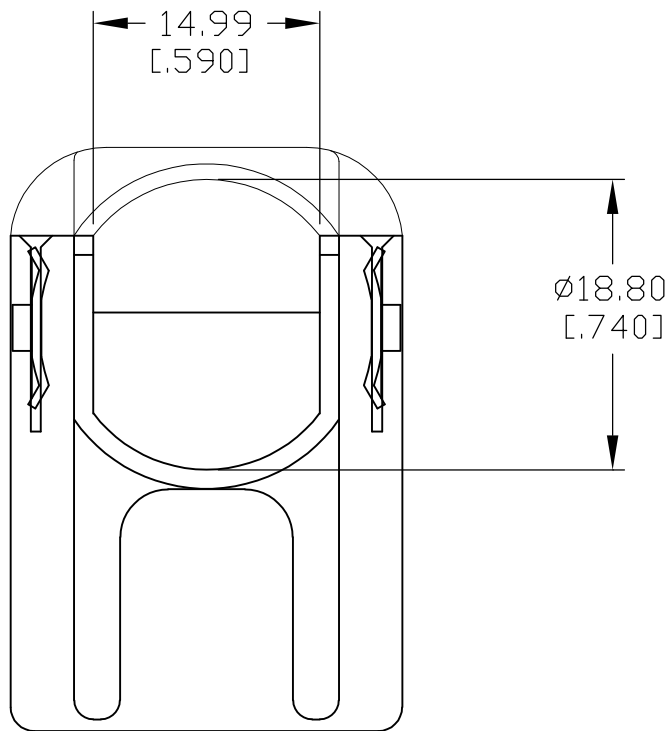
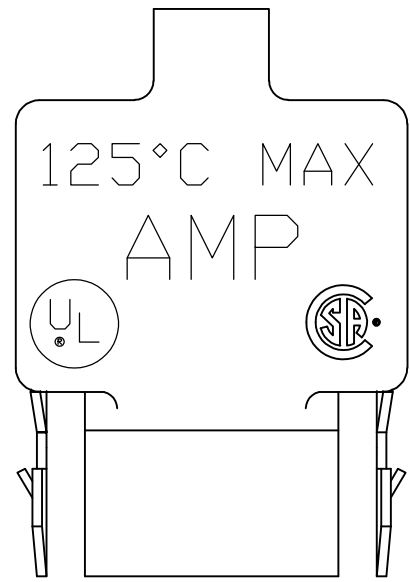
C

B

B


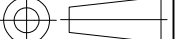
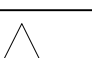
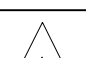
A

A



207508-1

PART NO.

THIS DRAWING IS A CONTROLLED DOCUMENT.		DWN L.HALL 19MAY00		 TE Connectivity					
		CHK L.H.SMITH 20JUN00							
DIMENSIONS: mm [INCHES]		TOLERANCES UNLESS OTHERWISE SPECIFIED:		NAME CONNECTOR ASSEMBLY, .375 x 90° FLEXIBLE CONDUIT					
		0 PLC ± 1 PLC ± 2 PLC ± 0.38 [.015] 3 PLC ± 4 PLC ±							
MATERIAL 		ANGLES ±		SIZE A2					
		FINISH 							
		PRODUCT SPEC		CAGE CODE 00779		DRAWING NO C=207508		RESTRICTED TO	
		APPLICATION SPEC							
		WEIGHT							
CUSTOMER DRAWING				SCALE 1:1		SHEET 1 of 1		REV G	