



Chipsmall Limited consists of a professional team with an average of over 10 year of expertise in the distribution of electronic components. Based in Hongkong, we have already established firm and mutual-benefit business relationships with customers from,Europe,America and south Asia,supplying obsolete and hard-to-find components to meet their specific needs.

With the principle of “Quality Parts,Customers Priority,Honest Operation,and Considerate Service”,our business mainly focus on the distribution of electronic components. Line cards we deal with include Microchip,ALPS,ROHM,Xilinx,Pulse,ON,Everlight and Freescale. Main products comprise IC,Modules,Potentiometer,IC Socket,Relay,Connector.Our parts cover such applications as commercial,industrial, and automotives areas.

We are looking forward to setting up business relationship with you and hope to provide you with the best service and solution. Let us make a better world for our industry!



## Contact us

Tel: +86-755-8981 8866 Fax: +86-755-8427 6832

Email & Skype: info@chipsmall.com Web: www.chipsmall.com

Address: A1208, Overseas Decoration Building, #122 Zhenhua RD., Futian, Shenzhen, China



THIS DRAWING IS UNPUBLISHED. RELEASED FOR PUBLICATION, 19 .  
 © COPYRIGHT 19 BY AMP INCORPORATED. ALL RIGHTS RESERVED.

LOC	DIST	REVISIONS			
P	LTR	DESCRIPTION	DATE	DWN	APVD
BD	36	E	16 FEB 96	BC	GS
		REDRAWN ON CAD W/O CHANGE			
		PER EC 0020-1343-95			

NUT  
 #4-40 UNC-2B x 4.75 [.187]  
 ACROSS FLATS  
 MATERIAL: STAINLESS STEEL  
 FINISH: PASSIVATED

∅5.72  
 [.225]  
 MAX

0.25  
 0.13  
 [.010]  
 [.005] R

LOCKWASHER  
 MATERIAL: STAINLESS STEEL  
 FINISH: PASSIVATED

22.61  
 22.22  
 [.890]  
 [.875]

14.10  
 [.555]

12.19±0.30  
 [.480±.012]

1.57  
 [.062]

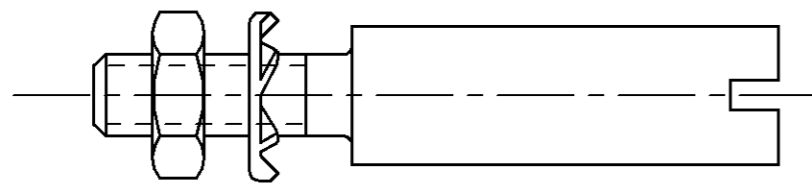
∅3.58  
 [.141]

0.97  
 [.038] ∅4.57  
 [.180]

GUIDE SOCKET  
 MATERIAL: STAINLESS STEEL

207619-1

PART  
 NUMBER



ASSEMBLED VIEW

THIS DRAWING IS A CONTROLLED DOCUMENT FOR AMP INCORPORATED.  
 IT IS SUBJECT TO CHANGE AND THE CONTROLLING ENGINEERING  
 ORGANIZATION SHOULD BE CONTACTED FOR THE LATEST REVISION.

DIMENSIONS:  
 mm [INCHES]

TOLERANCES UNLESS  
 OTHERWISE SPECIFIED:

0 PLC	±-
1 PLC	±-
2 PLC	±0.13 [.005]
3 PLC	±-
4 PLC	±-
ANGLES	±-

MATERIAL  
 SEE CALLOUTS

FINISH  
 SEE CALLOUTS

DWN B. CARBO 16 FEB 96

CHK R. STONE 20 FEB 96

APVD G. STEINHAEUER 17 APR 96

PRODUCT SPEC

APPLICATION SPEC

WEIGHT -

CUSTOMER DRAWING

16 FEB 96

20 FEB 96

17 APR 96

**AMP** AMP Incorporated  
 Harrisburg, PA 17105-3608

NAME

GUIDE SOCKET KIT, CENTER,  
 UNASSEMBLED, M SERIES

SIZE A3 CAGE CODE 00779 DRAWING NO

C-207619

SCALE 4:1 SHEET 1 OF 1 REV E