



Chipsmall Limited consists of a professional team with an average of over 10 year of expertise in the distribution of electronic components. Based in Hongkong, we have already established firm and mutual-benefit business relationships with customers from,Europe,America and south Asia,supplying obsolete and hard-to-find components to meet their specific needs.

With the principle of "Quality Parts,Customers Priority,Honest Operation,and Considerate Service",our business mainly focus on the distribution of electronic components. Line cards we deal with include Microchip,ALPS,ROHM,Xilinx,Pulse,ON,Everlight and Freescale. Main products comprise IC,Modules,Potentiometer,IC Socket,Relay,Connector.Our parts cover such applications as commercial,industrial, and automotives areas.

We are looking forward to setting up business relationship with you and hope to provide you with the best service and solution. Let us make a better world for our industry!



Contact us

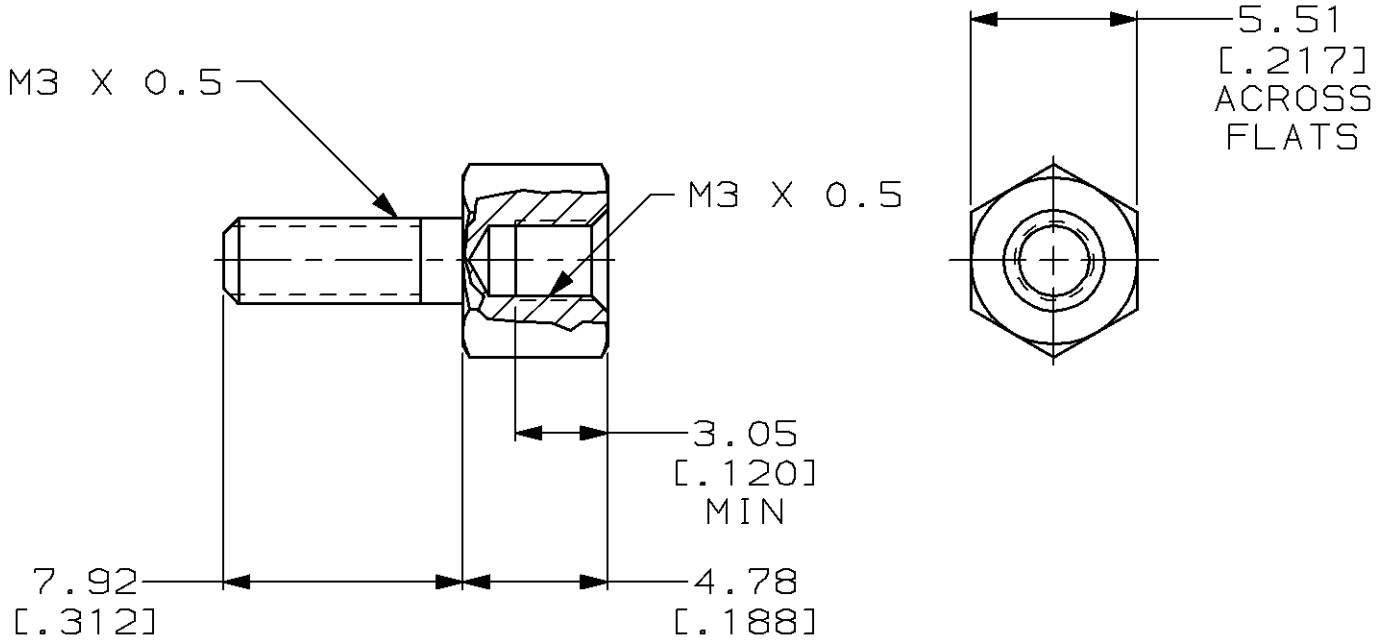
Tel: +86-755-8981 8866 Fax: +86-755-8427 6832

Email & Skype: info@chipsmall.com Web: www.chipsmall.com

Address: A1208, Overseas Decoration Building, #122 Zhenhua RD., Futian, Shenzhen, China



LOC	DIST	REVISIONS					
BD	48	P	LTR	DESCRIPTION	DATE	DWN	APVD
		0		RELEASED FOR CUSTOMER	13 OCT 98	-	-



- 1 5.08µm [.000200] MIN ZINC PLATED PER ASTM B633, YELLOW CHROMATE.
- 2 5.08µm [.000200] MIN ZINC PLATED PER ASTM B633, CLEAR CHROMATE.

2	207882-3
1	207882-2
FINISH	PART NUMBER

THIS DRAWING IS UNPUBLISHED. BY AMP INCORPORATED. ALL RIGHTS RESERVED.

DIMENSIONS: mm	DWN	B. CARBO	13 OCT 98	MATERIAL	CARBON STEEL	FINISH	SEE TABLE	
	CHK	C. OBERMAN	13 OCT 98	AMP AMP Incorporated Harrisburg, PA 17105-3608				
TOLERANCES UNLESS OTHERWISE SPECIFIED:		APVD	D. KELLER					13 OCT 98
0 PLC ±- 1 PLC ±- 2 PLC ±0.13 [.005] 3 PLC ±- 4 PLC ±- ANGLES ±-	PRODUCT SPEC -		NAME SCREWLOCK, FEMALE, HD SERIES, METRIC, AMPLIMITE		SIZE	CAGE CODE	DRAWING NO	RESTRICTED TO
APPLICATION SPEC -		WEIGHT -		A4	00779	C=	207882	-
CUSTOMER DRAWING				SCALE	4:1	SHEET	1 OF 1	REV 0