



Chipsmall Limited consists of a professional team with an average of over 10 year of expertise in the distribution of electronic components. Based in Hongkong, we have already established firm and mutual-benefit business relationships with customers from,Europe,America and south Asia,supplying obsolete and hard-to-find components to meet their specific needs.

With the principle of “Quality Parts,Customers Priority,Honest Operation,and Considerate Service”,our business mainly focus on the distribution of electronic components. Line cards we deal with include Microchip,ALPS,ROHM,Xilinx,Pulse,ON,Everlight and Freescale. Main products comprise IC,Modules,Potentiometer,IC Socket,Relay,Connector.Our parts cover such applications as commercial,industrial, and automotives areas.

We are looking forward to setting up business relationship with you and hope to provide you with the best service and solution. Let us make a better world for our industry!



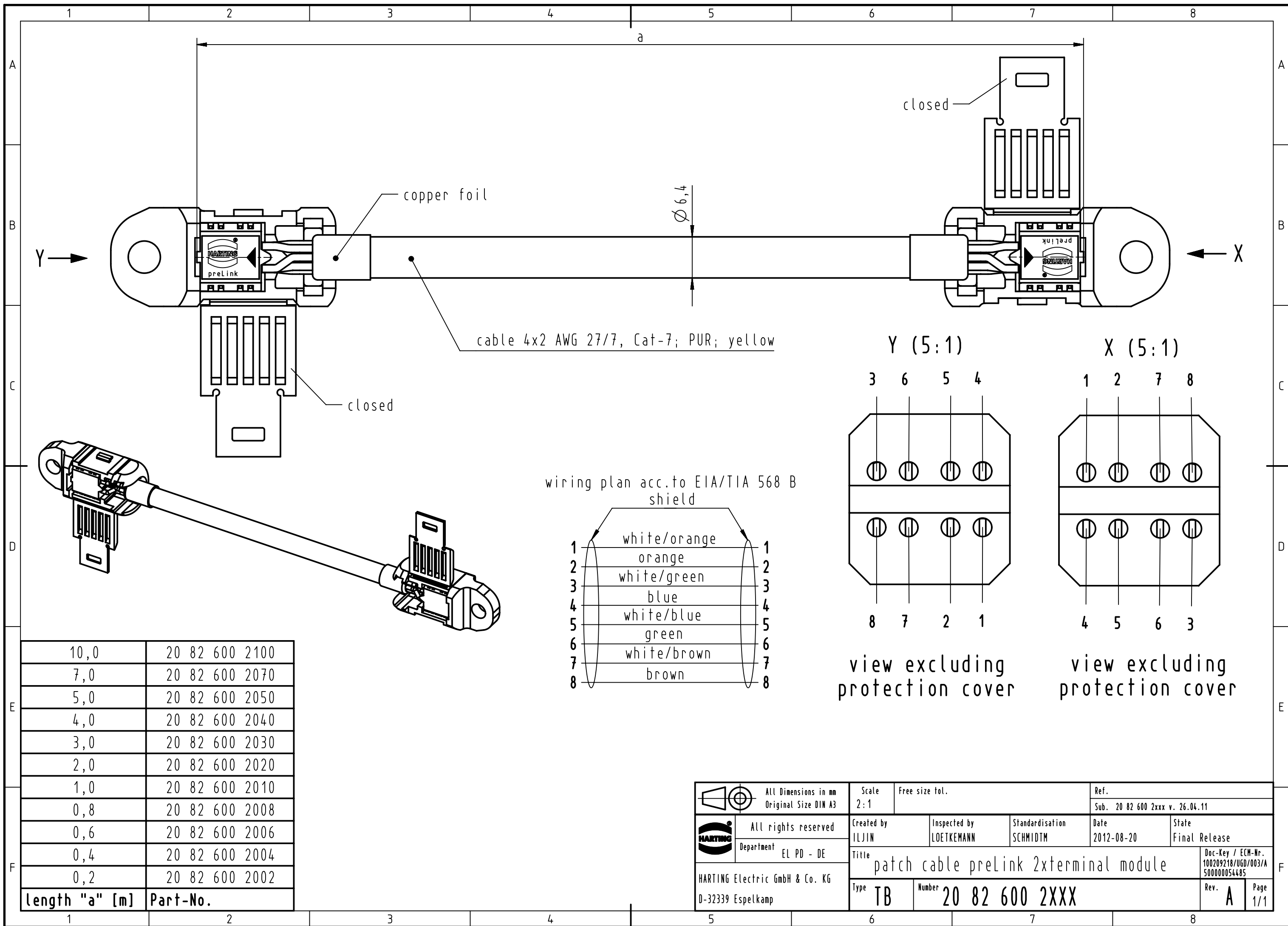
Contact us

Tel: +86-755-8981 8866 Fax: +86-755-8427 6832

Email & Skype: info@chipsmall.com Web: www.chipsmall.com

Address: A1208, Overseas Decoration Building, #122 Zhenhua RD., Futian, Shenzhen, China





10,0	20 82 600 2100
7,0	20 82 600 2070
5,0	20 82 600 2050
4,0	20 82 600 2040
3,0	20 82 600 2030
2,0	20 82 600 2020
1,0	20 82 600 2010
0,8	20 82 600 2008
0,6	20 82 600 2006
0,4	20 82 600 2004
0,2	20 82 600 2002
length "a" [m]	Part-No.

	All Dimensions in mm Original Size DIN A3		Scale 2:1	Free size tol.		Ref. Sub. 20 82 600 2xxx v. 26.04.11		
	All rights reserved		Created by ILJIN	Inspected by LOETKEMANN	Standardisation SCHMIDTM	Date 2012-08-20	State Final Release	
Department EL PD - DE		Title patch cable preLink 2xterminal module					Doc-Key / ECH-Nr. 100209218/UGD/003/A 50000054485	
HARTING Electric GmbH & Co. KG D-32339 Espelkamp		Type TB	Number 20 82 600 2XXX			Rev. A	Page 1/1	