



Chipsmall Limited consists of a professional team with an average of over 10 year of expertise in the distribution of electronic components. Based in Hongkong, we have already established firm and mutual-benefit business relationships with customers from,Europe,America and south Asia,supplying obsolete and hard-to-find components to meet their specific needs.

With the principle of “Quality Parts,Customers Priority,Honest Operation,and Considerate Service”,our business mainly focus on the distribution of electronic components. Line cards we deal with include Microchip,ALPS,ROHM,Xilinx,Pulse,ON,Everlight and Freescale. Main products comprise IC,Modules,Potentiometer,IC Socket,Relay,Connector.Our parts cover such applications as commercial,industrial, and automotives areas.

We are looking forward to setting up business relationship with you and hope to provide you with the best service and solution. Let us make a better world for our industry!



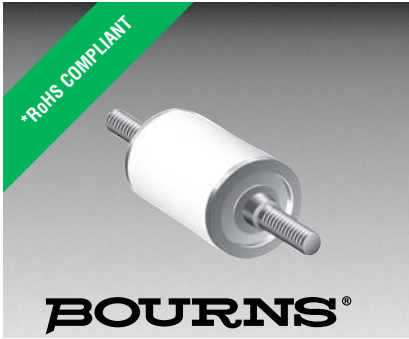
Contact us

Tel: +86-755-8981 8866 Fax: +86-755-8427 6832


Email & Skype: info@chipsmall.com Web: www.chipsmall.com

Address: A1208, Overseas Decoration Building, #122 Zhenhua RD., Futian, Shenzhen, China





Features

- Size: 11.8 mm diameter, 17.5 mm length
- High power rating
- High voltage range
- RoHS compliant*
-  UL Recognized**

Applications

- Industrial equipment/electronics
- Telecommunications electronics

2097 Series High-Voltage 2-Electrode Gas Discharge Tube

Characteristics

Test Methods per ITU-T (CCITT) K.12 and IEC 61643-311.

Characteristic	Model No.					
	2097-100**	2097-120	2097-140	2097-160	2097-200	2097-220
DC Sparkover $\pm 20\%$ @ 100 V/s	1000 V	1200 V	1400 V	1600 V	2000 V	2200 V
Impulse Sparkover ⁽¹⁾						
100 V/ μ s	< 1500 V	< 1800 V	< 2000 V	< 2300 V	< 2600 V	< 2700 V
1000 V/ μ s	< 1700 V	< 2000 V	< 2200 V	< 2500 V	< 2700 V	< 2800 V

⁽¹⁾ Impulse Sparkover voltage is defined as typical values of distribution.

Insulation Resistance (IR) ⁽²⁾	500/1000 Vdc	> 10 G Ω
Glow Voltage	10 mA	~ 60 V
Arc Voltage	1 A	~ 15 V
Glow-Arc Transition Current		< 1 A
Capacitance	1 MHz	< 1.0 pF
Impulse Discharge Current	25,000 A, 8/20 μ s	1 operation
	20,000 A, 8/20 μ s	5 operations
Alternating Discharge Current	20 Arms, 50 Hz, 1 second	1 operation min.
	120 Arms, 50 Hz, 9 cycles	1 operation min.
Impulse Life	500 A, 10/1000 μ s	> 400 operations
Operating Temperature		-30 to +85 °C
Storage Temperature		-40 to +115 °C
Climatic Category (IEC 60068-1)		40 / 90 / 21

Notes:

⁽²⁾ Insulation Resistance measured at 1000 V for GDTs with >2000 V DCBD.

• At delivery AQL 0.65 Level II, DIN ISO 2859.

** UL Recognized components, UL File E313168. Model 2097-100 is not UL Recognized.

BOURNS®

Asia-Pacific: Tel: +886-2 2562-4117 • Fax: +886-2 2562-4116

EMEA: Tel: +36 88 520 390 • Fax: +36 88 520 211

The Americas: Tel: +1-951 781-5500 • Fax: +1-951 781-5700

www.bourns.com

*RoHS Directive 2002/95/EC Jan. 27, 2003 including annex and RoHS Recast 2011/65/EU June 8, 2011.

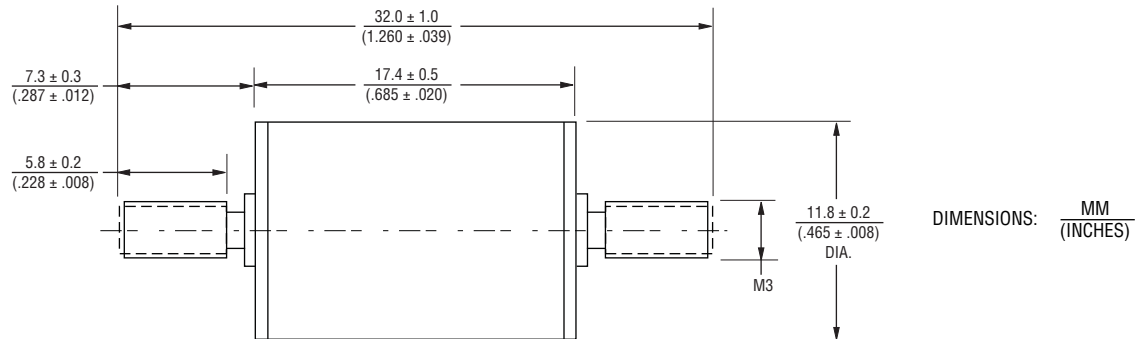
Specifications are subject to change without notice.

The device characteristics and parameters in this data sheet can and do vary in different applications and actual device performance may vary over time. Users should verify actual device performance in their specific applications.

2097 Series High-Voltage 2-Electrode Gas Discharge Tube

BOURNS®

Product Dimensions



Packaging Specifications

Model 2097 ships standard bulk, 35 pcs. per tray; 3 trays per box (105 units).

How to Order

2097 - xxx - D LF

Model Number Designator _____

Voltage (Divided by 10) _____

100 = 1000 V
 120 = 1200 V
 140 = 1400 V
 160 = 1600 V
 200 = 2000 V
 220 = 2200 V

Contact Terminals _____

D = M3

RoHS Compliance _____

LF = RoHS Compliant Product

REV. E 08/15

Specifications are subject to change without notice.
 The device characteristics and parameters in this data sheet can and do vary in different applications and actual device performance may vary over time.
 Users should verify actual device performance in their specific applications.