



Chipsmall Limited consists of a professional team with an average of over 10 year of expertise in the distribution of electronic components. Based in Hongkong, we have already established firm and mutual-benefit business relationships with customers from,Europe,America and south Asia,supplying obsolete and hard-to-find components to meet their specific needs.

With the principle of “Quality Parts,Customers Priority,Honest Operation,and Considerate Service”,our business mainly focus on the distribution of electronic components. Line cards we deal with include Microchip,ALPS,ROHM,Xilinx,Pulse,ON,Everlight and Freescale. Main products comprise IC,Modules,Potentiometer,IC Socket,Relay,Connector.Our parts cover such applications as commercial,industrial, and automotives areas.

We are looking forward to setting up business relationship with you and hope to provide you with the best service and solution. Let us make a better world for our industry!



Contact us

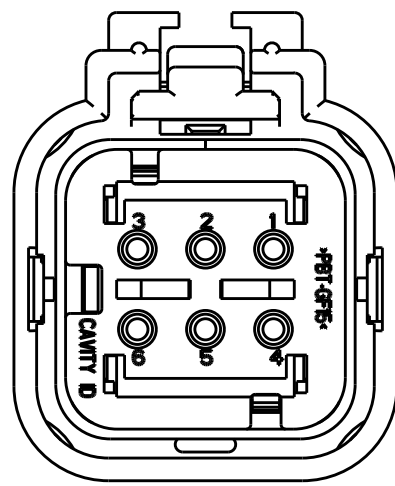
Tel: +86-755-8981 8866 Fax: +86-755-8427 6832

Email & Skype: info@chipsmall.com Web: www.chipsmall.com

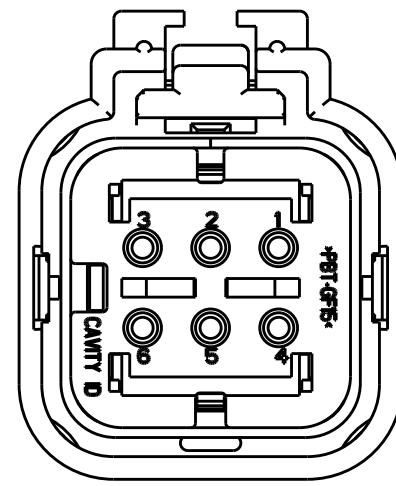
Address: A1208, Overseas Decoration Building, #122 Zhenhua RD., Futian, Shenzhen, China



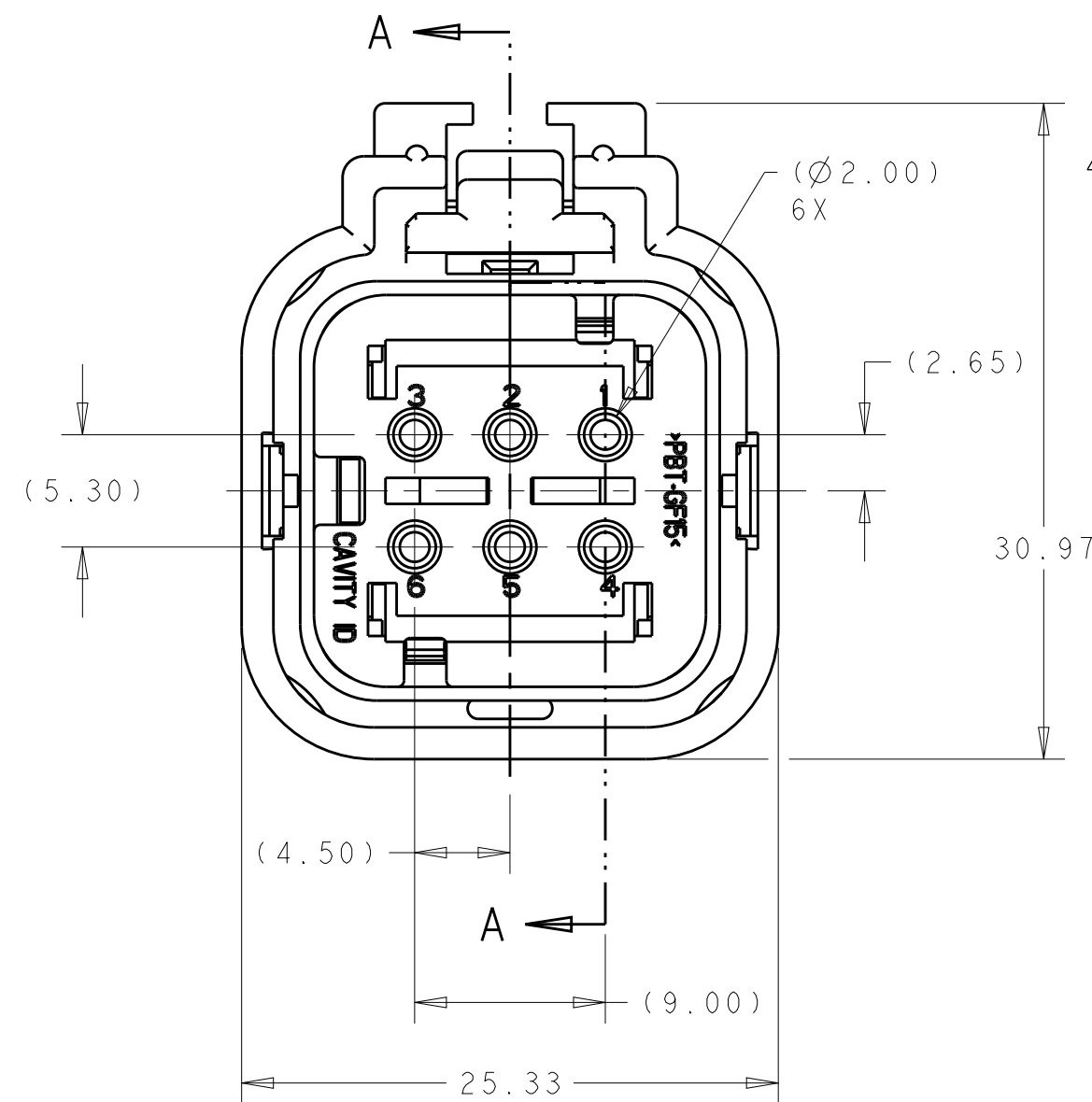
REVISIONS					
P	LTR	DESCRIPTION	DATE	DWN	APVD
	A	RELEASED PER ECO-10-009942	28MAY2010	DD	RB
	B	REVISED PER ECO-13-019865	27DEC2013	DR	RB



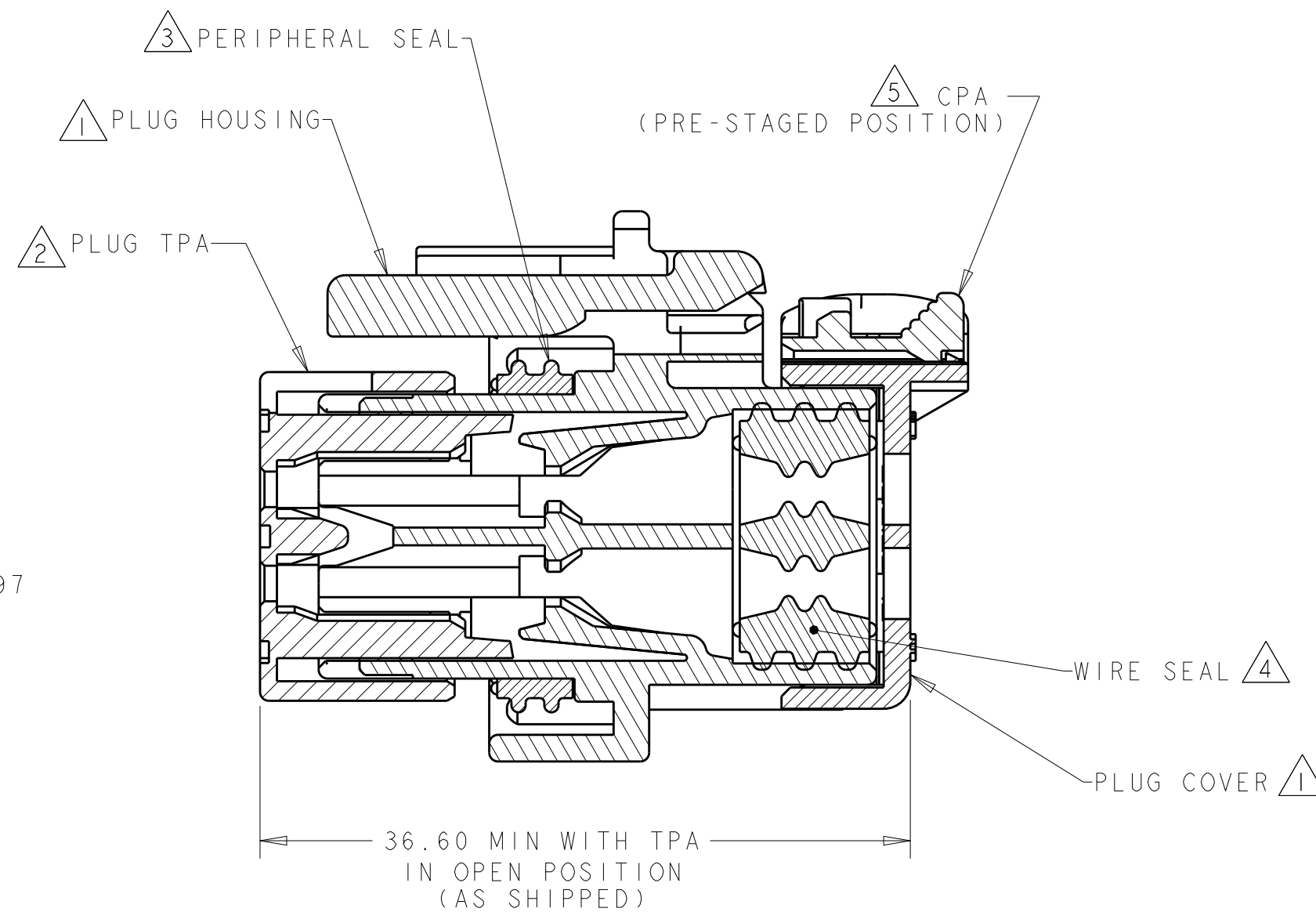
2098237-2
PURPLE TPA
KEY B
SCALE: 2:1



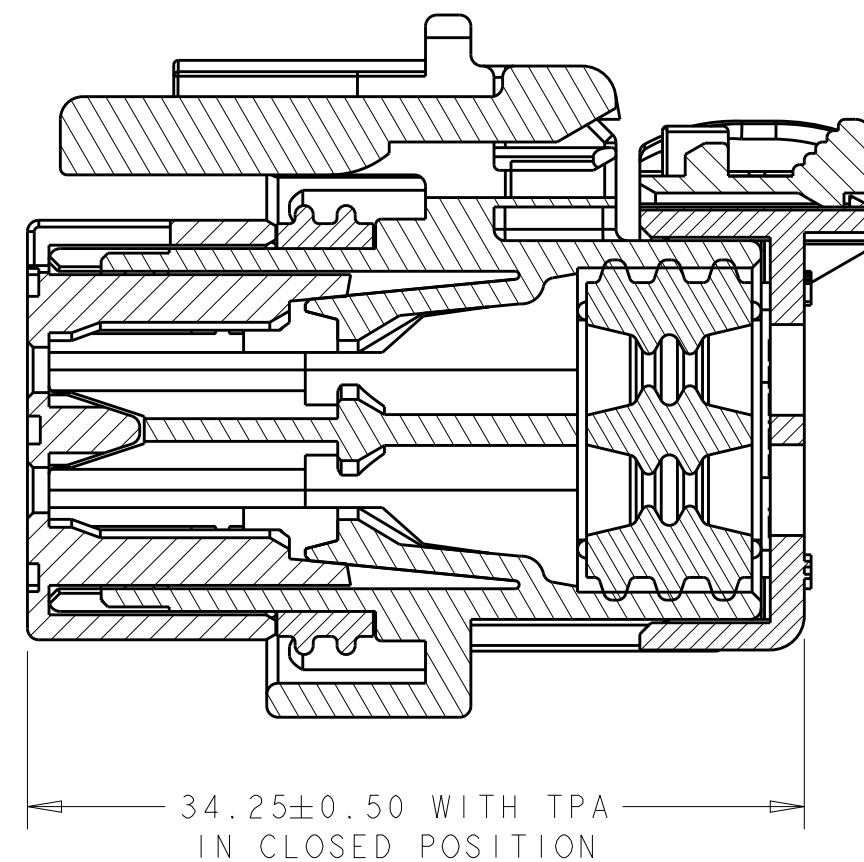
2098237-3
BLUE TPA
KEY C
SCALE: 2:1



2098237-1 SHOWN
ORANGE TPA
KEY A

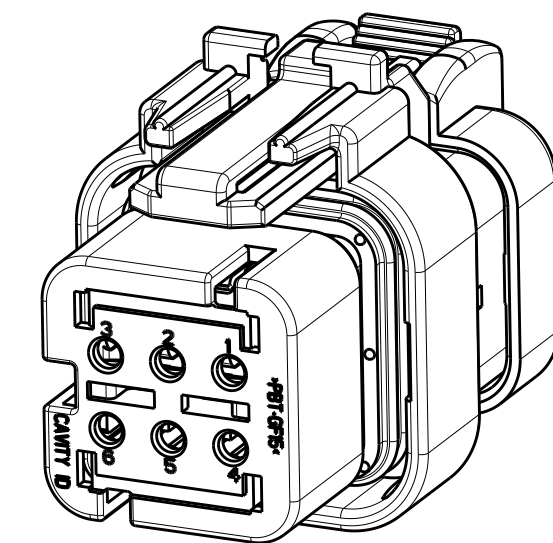


SECTION A - A

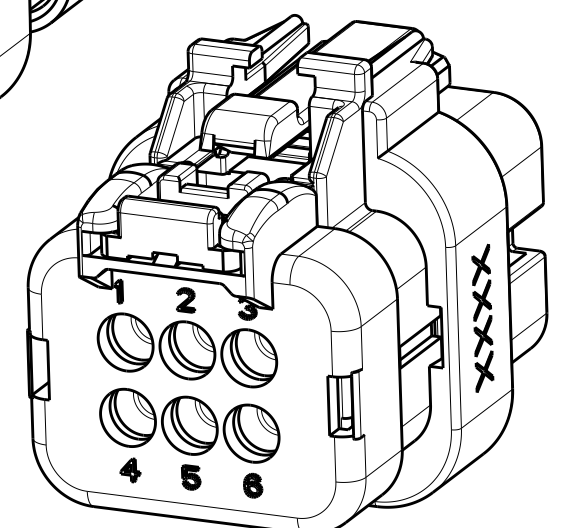


SECTION A - A

- ① HOUSING AND COVER MATERIAL: 25% GLASS FILLED THERMOPLASTIC
COLOR: NATURAL (BROWN)
 - ② TPA MATERIAL: 15% GLASS FILLED THERMOPLASTIC
COLOR: (SEE TABLE)
 - ③ PERIPHERAL SEAL MATERIAL: SILICONE
COLOR: BLUE
 - ④ WIRE SEAL MATERIAL: SILICONE
COLOR: MARINE BLUE
 - ⑤ CPA MATERIAL: 20% GLASS FILLED THERMOPLASTIC
COLOR: ORANGE
6. RECOMMENDED WIRE DIAMETER RANGE IS 2.18 TO 3.67mm





SCALE 2:1



SCALE 2:1

C	BLUE	2098237-3
B	PURPLE	2098237-2
A	ORANGE	2098237-1
KEY	TPA COLOR	PART NUMBER

THIS DRAWING IS A CONTROLLED DOCUMENT.		DWN 29MAY2009 RUSTY WORTHINGTON CHK 29MAY2009 ROGER BALTER APVD 29MAY2009 ROGER BALTER		 TE Connectivity	
DIMENSIONS: mm		TOLERANCES UNLESS OTHERWISE SPECIFIED:		NAME PLUG ASSEMBLY, 6 POSITION, DUAL ROW, AMPSEAL 16, VO MATERIAL	
		0 PLC ±. 1 PLC ±0.5 2 PLC ±0.30 3 PLC ±. 4 PLC ±. ANGLES ±.		PRODUCT SPEC 108-2184 APPLICATION SPEC 114-13065	
MATERIAL SEE NOTES - -		WEIGHT 14±1g		SIZE A200779	
		CUSTOMER DRAWING		DRAWING NO C-2098237	
				RESTRICTED TO -	
				SCALE 3:1 SHEET OF REV B	