



Chipsmall Limited consists of a professional team with an average of over 10 year of expertise in the distribution of electronic components. Based in Hongkong, we have already established firm and mutual-benefit business relationships with customers from,Europe,America and south Asia,supplying obsolete and hard-to-find components to meet their specific needs.

With the principle of “Quality Parts,Customers Priority,Honest Operation,and Considerate Service”,our business mainly focus on the distribution of electronic components. Line cards we deal with include Microchip,ALPS,ROHM,Xilinx,Pulse,ON,Everlight and Freescale. Main products comprise IC,Modules,Potentiometer,IC Socket,Relay,Connector.Our parts cover such applications as commercial,industrial, and automotives areas.

We are looking forward to setting up business relationship with you and hope to provide you with the best service and solution. Let us make a better world for our industry!



## Contact us

Tel: +86-755-8981 8866 Fax: +86-755-8427 6832

Email & Skype: info@chipsmall.com Web: www.chipsmall.com

Address: A1208, Overseas Decoration Building, #122 Zhenhua RD., Futian, Shenzhen, China



# PREO Power Line EMI Filters

A Division of Eastek International Corporation

# Series EK

General Purpose  
CM & Enhanced DM



UL Recognized  
CSA Certified  
VDE Approved

## Introduction

The EK series are general purpose EMI filters with enhanced differential mode performance. They are effective in suppressing both common mode and differential mode noise. This series is a very good choice when it is required to comply with EMI emission regulations, such as FCC-A and VDE-A. Available in a wide range of current ratings and termination styles.

## Minimum Insertion Loss in dB

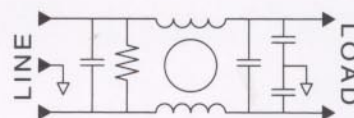
Common mode (line to ground) in 50 ohm system:

MODEL	Frequency in MHz								
	0.02	0.05	0.10	0.15	0.50	1.0	5.0	10	30
02EK11/33	7	15	21	24	35	43	45	45	40
03EK11/33/M1	8	16	22	26	37	45	45	45	40
06EK11/33/M1	4	11	16	20	31	40	45	45	40
10EK11/33/66/M1		2	5	9	20	25	38	42	40
20EK11/66		3	7	10	20	28	35	38	40
30EK66		4	8	12	23	30	35	38	40

Differential mode (line to line) in 50 ohm system:

MODEL	Frequency in MHz								
	0.05	0.10	0.15	0.50	1.0	3.0	5.0	10	30
02EK11/33	6	9	6	35	50	55	55	50	45
03EK11/33/M1	6	6	6	40	55	55	55	50	45
06EK11/33/M1	6	9	6	35	50	55	55	50	45
10EK11/33/66/M1	6	12	14	14	38	55	50	48	45
20EK11/66	6	12	14	14	38	55	50	48	45
30EK66	18	20	15	40	55	55	55	55	50

## Schematic



## Electrical ratings

Maximum operating voltage: 250 VAC

Operating frequency: 50/60 Hz

Hipot rating (one minute):

Line to Ground: 1500 VAC  
Line to Line: 1450 VDC

Maximum leakage current (each line to ground):

@ 120 VAC / 60 Hz: 0.25 mA  
@ 250 VAC / 50 Hz: 0.45 mA

Rated current at 40°C ambient temperature:

02EK11, 02EK33 2 A  
03EK11, 03EK33, 03EKM1 3 A  
06EK11, 06EK33, 06EKM1 6 A  
10EK11, 10EK33, 10EK66, 10EKM1 10 A  
20EK11, 20EK66 20 A  
30EK66 30 A

Now in Stock at

## EASTEK INTERNATIONAL CORPORATION

114 Joey Drive, Elk Grove, IL 60007, USA  
Phone: 847 437 2800 Fax: 847 437 2809

or your local agent