



Chipsmall Limited consists of a professional team with an average of over 10 year of expertise in the distribution of electronic components. Based in Hongkong, we have already established firm and mutual-benefit business relationships with customers from,Europe,America and south Asia,supplying obsolete and hard-to-find components to meet their specific needs.

With the principle of “Quality Parts,Customers Priority,Honest Operation,and Considerate Service”,our business mainly focus on the distribution of electronic components. Line cards we deal with include Microchip,ALPS,ROHM,Xilinx,Pulse,ON,Everlight and Freescale. Main products comprise IC,Modules,Potentiometer,IC Socket,Relay,Connector.Our parts cover such applications as commercial,industrial, and automotives areas.

We are looking forward to setting up business relationship with you and hope to provide you with the best service and solution. Let us make a better world for our industry!



Contact us

Tel: +86-755-8981 8866 Fax: +86-755-8427 6832

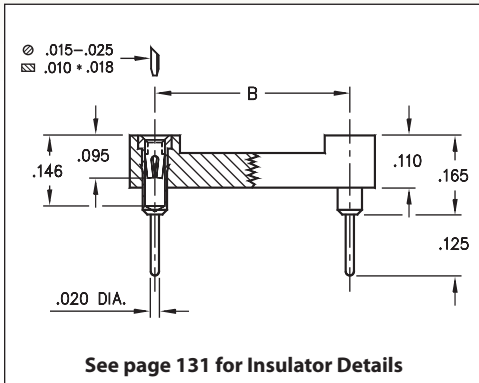
Email & Skype: info@chipsmall.com Web: www.chipsmall.com

Address: A1208, Overseas Decoration Building, #122 Zhenhua RD., Futian, Shenzhen, China

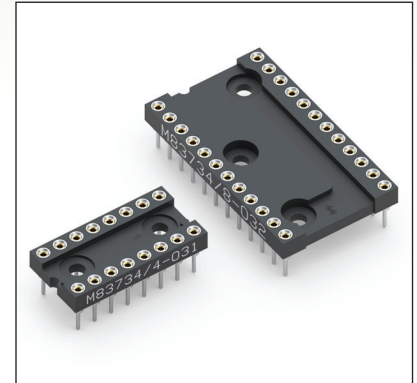


DUAL-IN-LINE SOCKETS

SERIES 210...101 • MIL-DTL-83734 APPROVED, SOLDER TAIL • CLOSED FRAME



- Sockets are XY stackable
- Socket pins feature closed end construction eliminating any solder wicking problems
- Packaged in tubes compatible with automatic insertion equipment
- Hi-Rel, 4-finger BeCu #30 contact is rated at 3 amps. See page 253 for details
- Series 210 uses MM #1001 pins. See page 165 for details
- Insulators are high temperature thermoplastic, suitable for all soldering operations
- For Electrical, Mechanical and Environmental Data, see page 264 for details



Total number of pins				Quantity per tube	ORDERING INFORMATION		
	A	B	C		Mill-Max Part Number	Military Part Number	
6	0.3	0.3	0.4	67	210-XX-306-41-101000	M83734/1-YYY	
8	0.4	0.3	0.4	50	210-XX-308-41-101000	M83734/2-YYY	
14	0.7	0.3	0.4	28	210-XX-314-41-101000	M83734/3-YYY	
16	0.8	0.3	0.4	25	210-XX-316-41-101000	M83734/4-YYY	
18	0.9	0.3	0.4	22	210-XX-318-41-101000	M83734/5-YYY	
20	1.0	0.3	0.4	20	210-XX-320-41-101000	M83734/13-YYY	
22	1.1	0.4	0.5	18	210-XX-422-41-101000	M83734/6-YYY	
24	1.2	0.6	0.7	16	210-XX-624-41-101000	M83734/8-YYY	
28	1.4	0.6	0.7	14	210-XX-628-41-101000	M83734/7-YYY	
32	1.6	0.6	0.7	10	210-XX-632-41-101000	M83734/17-YYY	
36	1.8	0.6	0.7	11	210-XX-636-41-101000	M83734/9-YYY	
40	2.0	0.6	0.7	8	210-XX-640-41-101000	M83734/10-YYY	
64	3.2	0.9	1.0	6	210-XX-964-41-101000	M83734/15-YYY	
<div style="border: 1px solid black; border-radius: 50%; padding: 5px; display: inline-block;"> XX=Plating Code See Below </div>					SEE PAGE 103 FOR COMPLETE MIL-DTL-83734 QPL		
SPECIFY MILL-MAX PLATING CODE XX =					33	83	88
FOR MILITARY PLATING CODE YYY =					031	032	033
(6 PIN ONLY) YYY =					025	026	027
(32 PIN ONLY) YYY =					013	014	015
Sleeve (Pin)					30 μ" min. Au	300 μ" Sn/Pb	300 μ" Sn/Pb
Contact (Clip)					30 μ" min. Au	30 μ" min. Au	100 μ" Sn/Pb

