



Chipsmall Limited consists of a professional team with an average of over 10 year of expertise in the distribution of electronic components. Based in Hongkong, we have already established firm and mutual-benefit business relationships with customers from,Europe,America and south Asia,supplying obsolete and hard-to-find components to meet their specific needs.

With the principle of “Quality Parts,Customers Priority,Honest Operation,and Considerate Service”,our business mainly focus on the distribution of electronic components. Line cards we deal with include Microchip,ALPS,ROHM,Xilinx,Pulse,ON,Everlight and Freescale. Main products comprise IC,Modules,Potentiometer,IC Socket,Relay,Connector.Our parts cover such applications as commercial,industrial, and automotives areas.

We are looking forward to setting up business relationship with you and hope to provide you with the best service and solution. Let us make a better world for our industry!



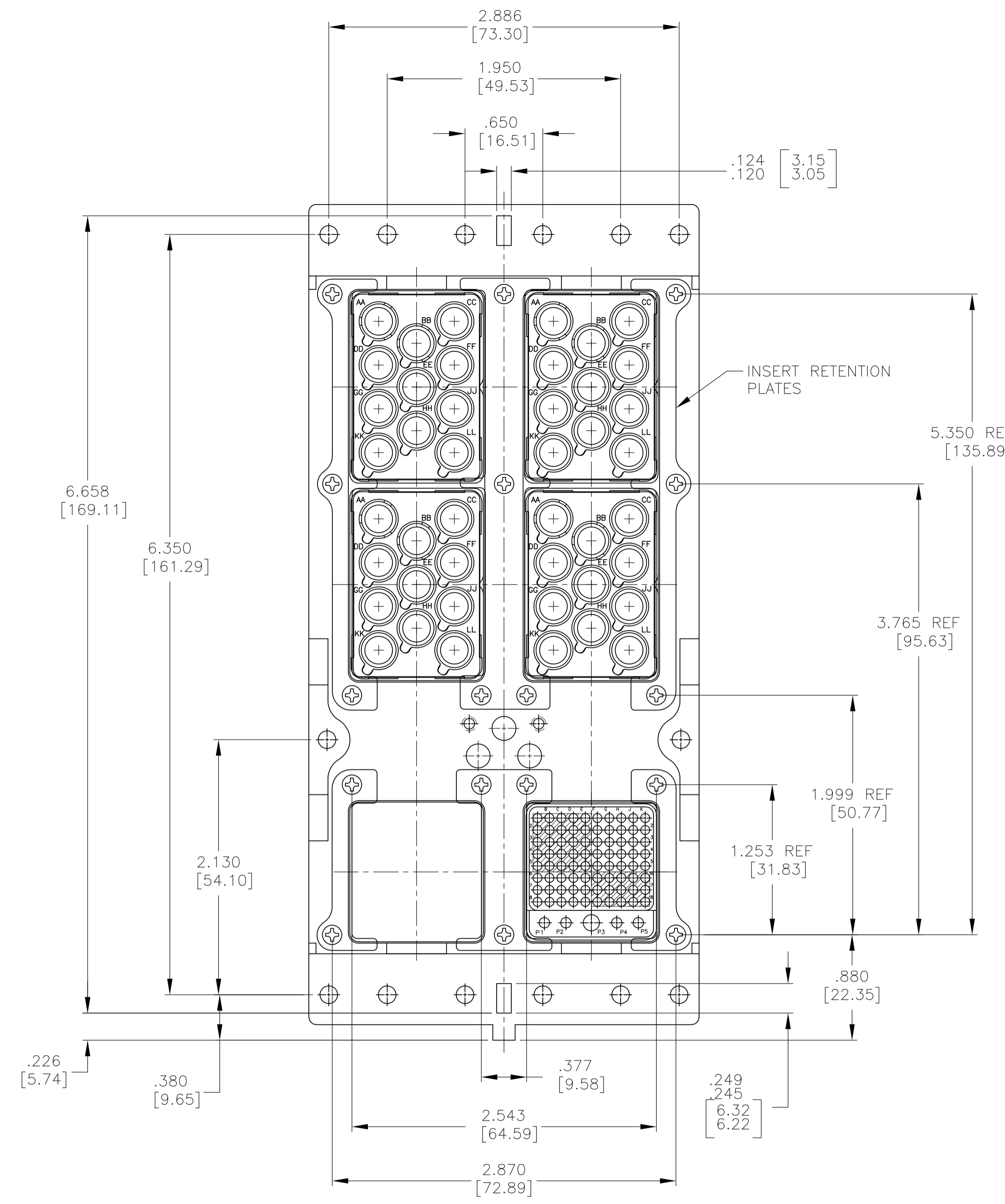
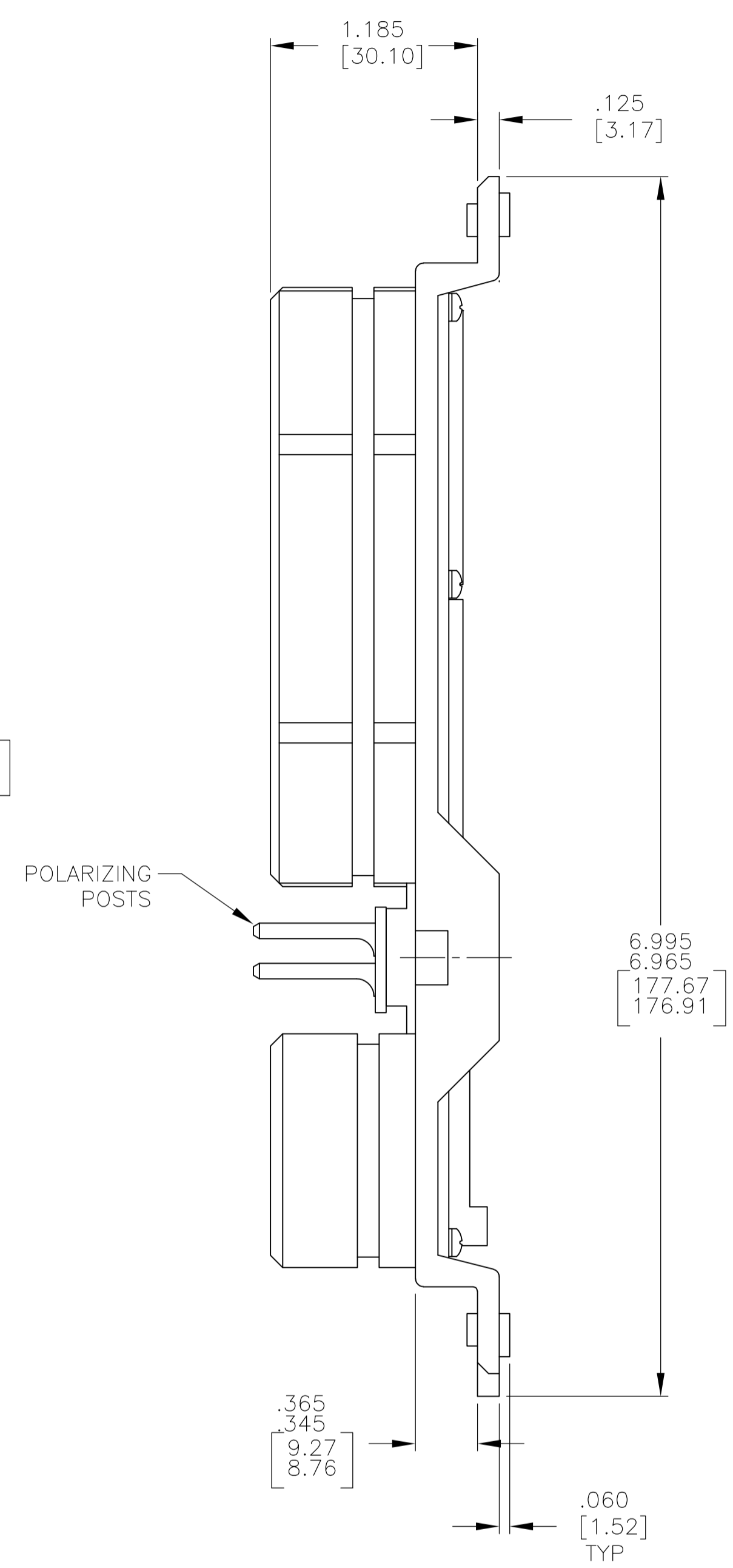
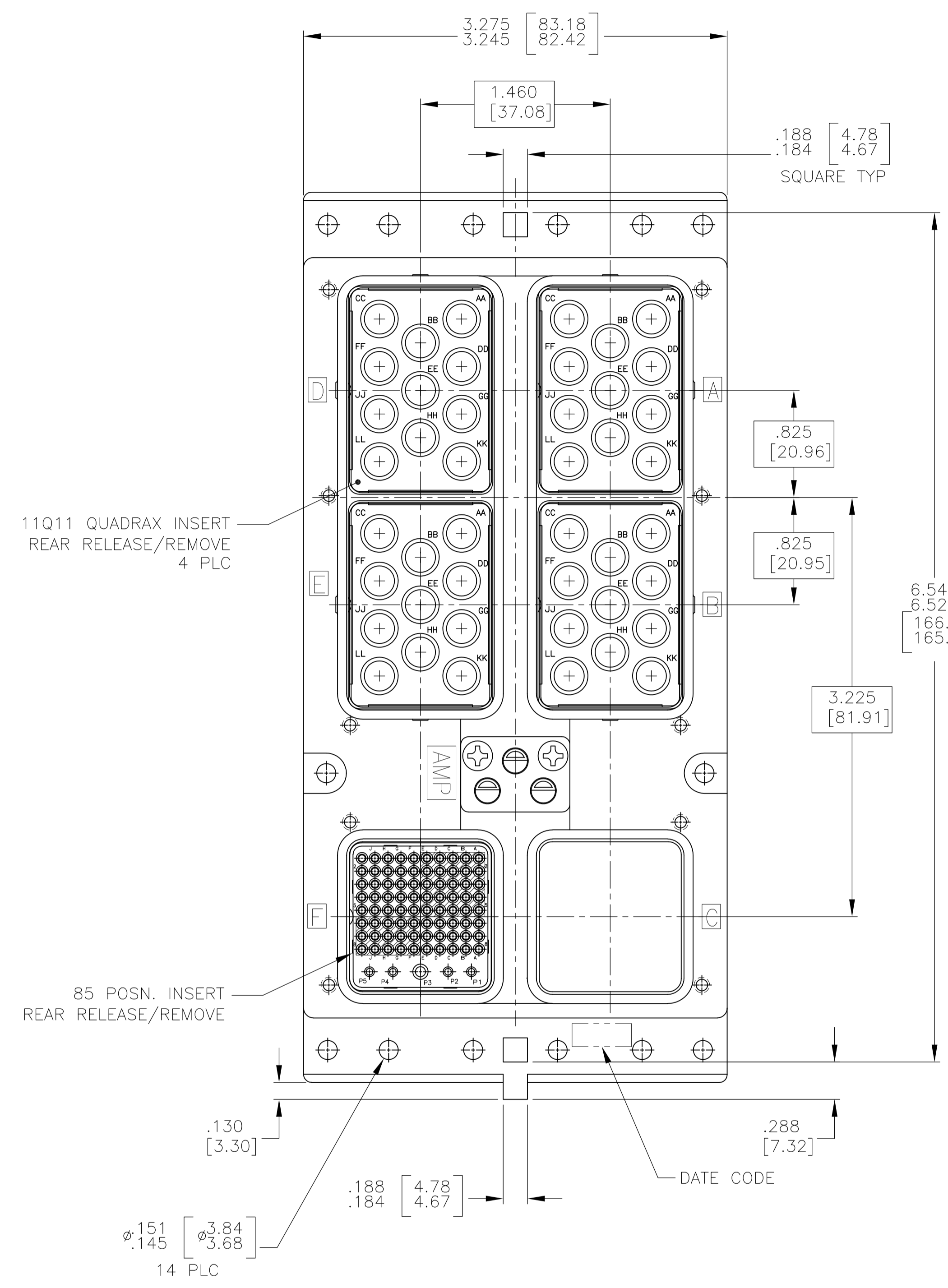
## Contact us

Tel: +86-755-8981 8866 Fax: +86-755-8427 6832

Email & Skype: info@chipsmall.com Web: www.chipsmall.com

Address: A1208, Overseas Decoration Building, #122 Zhenhua RD., Futian, Shenzhen, China





- CONNECTOR DIMENSIONS ARE PER ARINC 600 SPECIFICATION
- DUST COVER (NOT SHOWN) INSTALLED FOR SHIPPING.
- KEYING SHOWN IN POSITION "01" FOR REFERENCE ONLY. SEE TABLE FOR KEYING POSITION. FOR POSITION "00" KEYING SHIPPED UNASSEMBLED.
- THE FOLLOWING CONTACTS AND FILLER PLUGS PACKAGED IN A SEPARATE CONTAINER AND SHIPPED WITH CONNECTOR.  
 QUADRAX FILLER PLUG; TE PART NO. 1996636-1; QTY=27.  
 SIZE 22 FILLER PLUG; TE PART NO. 1663767-5; QTY=66.  
 SIZE 20 FILLER PLUG; TE PART NO. 1663767-6; QTY=2.  
 QUADRAX CONTACT; TE PART NO. 1445693-1; QTY=5.  
 SIZE 22 PIN CONTACT; TE PART NO. 208262-3; QTY=14.  
 SIZE 20 SOCKET CONTACT; TE PART NO. 208267-2; QTY=2.  
 SIZE 16 SOCKET CONTACT; TE PART NO. 208270-2; QTY=1.

COMPONENT	MATERIAL	FINISH
SHELL	DIE CAST ALUMINUM PER ASTM-B-85	CHEMICAL CONVERSION COATING PER MIL-C-5541, CLASS 1A
INSERT RETENTION PLATES	ALUMINUM ALLOY PER ASTM-B-209	CHEMICAL CONVERSION COATING PER MIL-C-5541, CLASS 1A
SCREWS AND LOCKWASHERS	STEEL OR STAINLESS STEEL	CHROMATE OVER ZINC OR PASSIVATED
POLARIZING POSTS	ZINC ALLOY PER ASTM-B-86	ELECTROLESS NICKEL PER MIL-C-26074, CLASS 4, GRADE B
85 POSITION INSERT	THERMOSET	-
QUADRAX & BLANK INSERTS	ALUMINUM ALLOY PER ASTM-B-209	ELECTROLESS NICKEL PER MIL-C-26074, CLASS 4, GRADE B
POLARIZING POST RETAINING PLATE	ALUMINUM ALLOY PER ASTM-B-209	BLUE ANODIZED PER MIL-A-8625

THIS DRAWING IS A CONTROLLED DOCUMENT.

DIMENSIONS: INCHES	TOLERANCES UNLESS OTHERWISE SPECIFIED:
0 PLC ± .005	1 PLC ± .005
2 PLC ± .005	3 PLC ± .005
4 PLC ± .005	ANGLES ± .005

MATERIAL SEE TABLE FINISH SEE TABLE

"01"	2101598-1
KEYING POSITION	PART NUMBER
DWN C.C.THOMAS 11-2-09 CHK K.THACKSTON 11-2-09 APVD K.THACKSTON 11-2-09 Tyco Electronics Corporation Harrisburg, Pa 17105-3608 NAME PLUG ASSY, SIZE 3, ARINC 600 (11Q11/11Q11/BLANK/11Q11/11Q11/85) APPLICATION SPEC SIZE A1 CASE CODE 00779 DRAWING NO. 2101598 WEIGHT RESTRICTED TO CUSTOMER DRAWING SCALE 1.5:1 SHEET 1 OF 1 REV A	