



Chipsmall Limited consists of a professional team with an average of over 10 year of expertise in the distribution of electronic components. Based in Hongkong, we have already established firm and mutual-benefit business relationships with customers from,Europe,America and south Asia,supplying obsolete and hard-to-find components to meet their specific needs.

With the principle of “Quality Parts,Customers Priority,Honest Operation,and Considerate Service”,our business mainly focus on the distribution of electronic components. Line cards we deal with include Microchip,ALPS,ROHM,Xilinx,Pulse,ON,Everlight and Freescale. Main products comprise IC,Modules,Potentiometer,IC Socket,Relay,Connector.Our parts cover such applications as commercial,industrial, and automotives areas.

We are looking forward to setting up business relationship with you and hope to provide you with the best service and solution. Let us make a better world for our industry!



Contact us

Tel: +86-755-8981 8866 Fax: +86-755-8427 6832

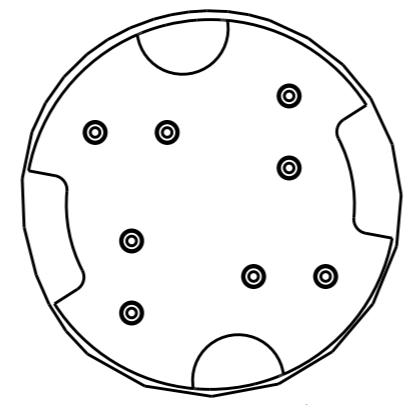
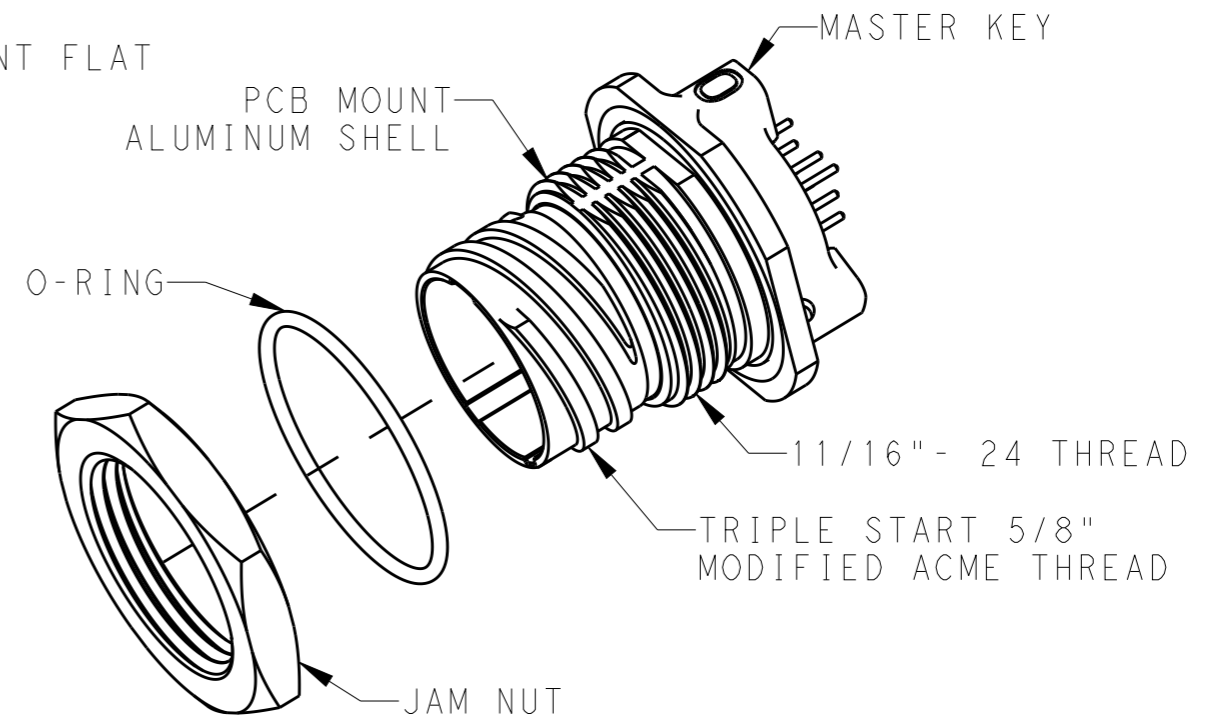
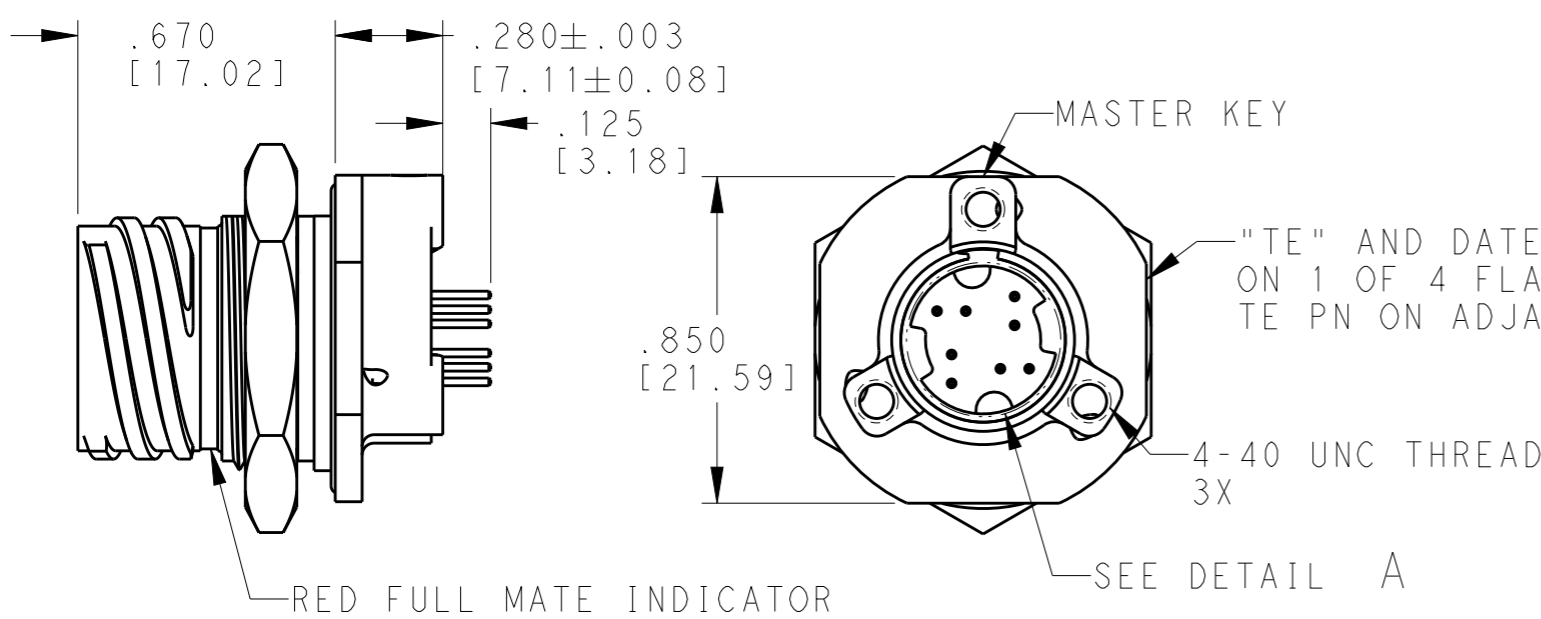
Email & Skype: info@chipsmall.com Web: www.chipsmall.com

Address: A1208, Overseas Decoration Building, #122 Zhenhua RD., Futian, Shenzhen, China



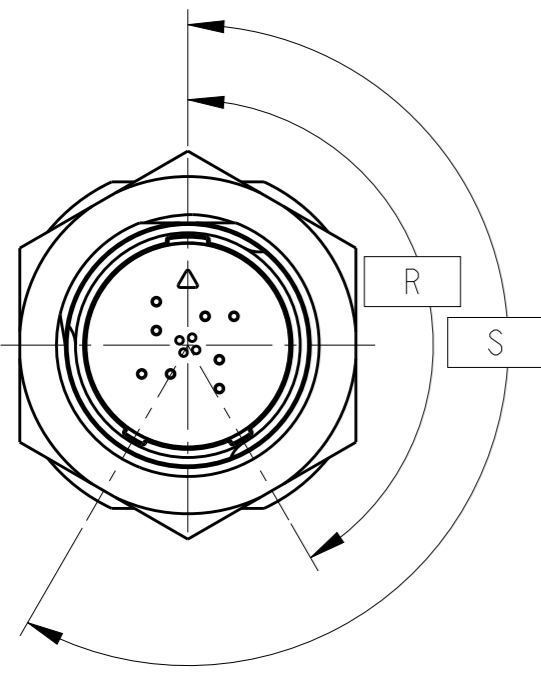
THIS DRAWING IS UNPUBLISHED. RELEASED FOR PUBLICATION
 © COPYRIGHT - BY - ALL RIGHTS RESERVED.

LOC	DIST	REVISIONS					
		P	LTR	DESCRIPTION	DATE	DWN	APVD
-	-		D	REV PER ECO 13-001557	12FEB2013	CT	DM
			E	REV PER ECO-15-013009	04DEC15	RS	CT



DETAIL A
SCALE 5:1

- 1, -3 AND -5 ARE ELECTROLESS NICKEL PLATE PER MIL-C-26074
- 2, -4 AND -6 ARE BLACK ZINC NICKEL PER AMS-2417.



QTY	DESCRIPTION	FINISH	PART NUMBER
1	JAM NUT	BLACK ZINC NICKEL PLATE	2102351-6
-	JAM NUT	NICKEL PLATE	2102351-5
1	O-RING	FLUOROSILICONE	2102351-4
-	O-RING	NICKEL PLATE	2102351-3
1	CONNECTOR BODY	BLACK ZINC NICKEL PLATE	2102351-2
-	CONNECTOR BODY	NICKEL PLATE	2102351-1
	JAM NUT	BLACK ZINC NICKEL PLATE	
	JAM NUT	NICKEL PLATE	
	O-RING	FLUOROSILICONE	
	KEYING	OPTION	
	FINISH		
	PART NUMBER		

KEY OPTIONS	KEY ROTATION	
	"R"	"S"
NORMAL	150°	210°
A	140°	215°
B	132°	248°

THIS DRAWING IS A CONTROLLED DOCUMENT.

DWN: 04OCT2011 MCKIBBEN, JOHN
 CHK: 04OCT2011 DOWHOWER, KENNETH
 APVD: 04OCT2011 DOWHOWER, KENNETH

PRODUCT SPEC: 108-2482
 APPLICATION SPEC: 114-32025
 WEIGHT: -

CUSTOMER DRAWING

SCALE: 2:1 SHEET 1 OF 2 REV F

TE Connectivity
STE
 PCB MOUNT KIT

SIZE: A3 CAGE CODE: 000779 DRAWING NO: 2102351 RESTRICTED TO: -

THIS DRAWING IS UNPUBLISHED.

RELEASED FOR PUBLICATION

20

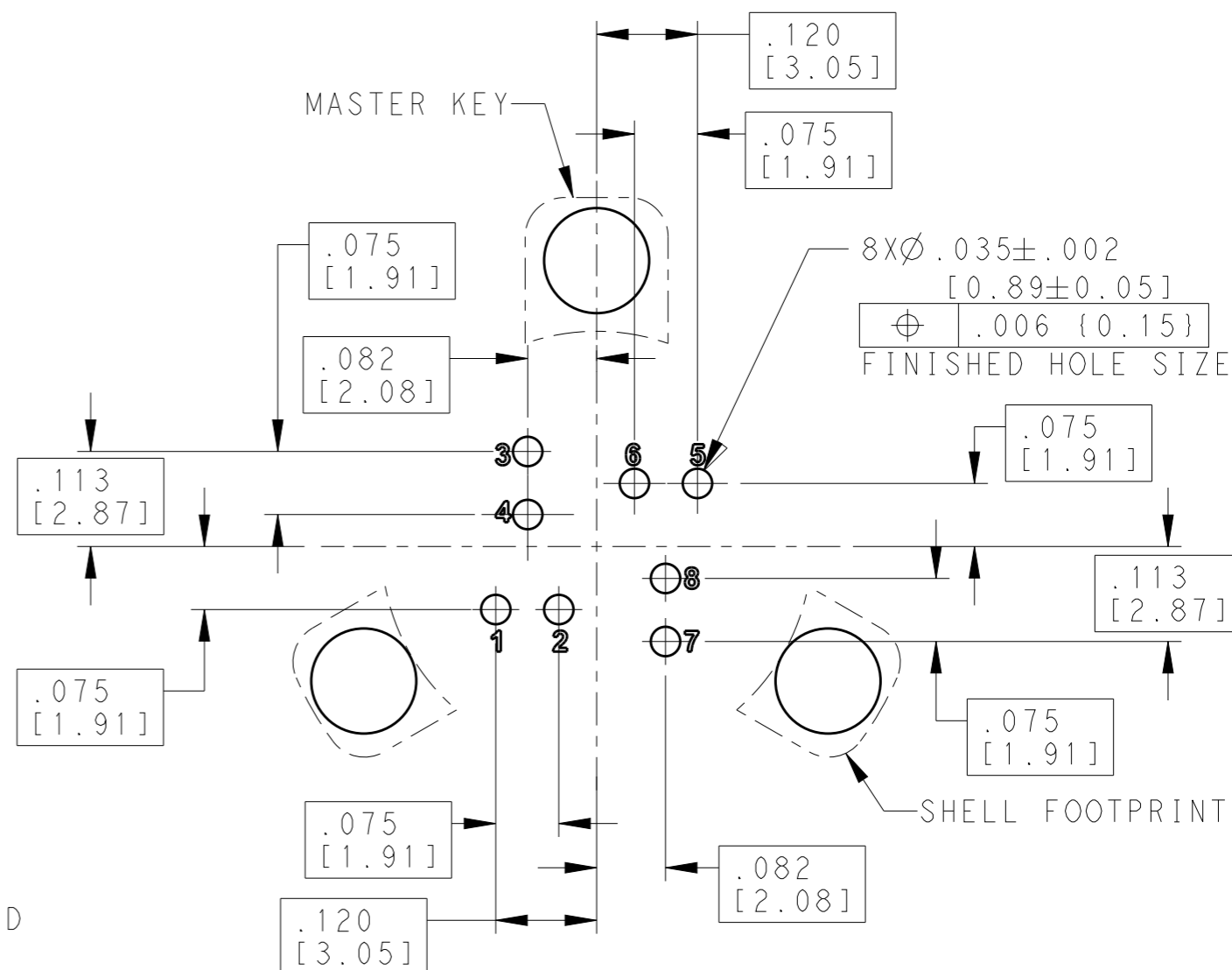
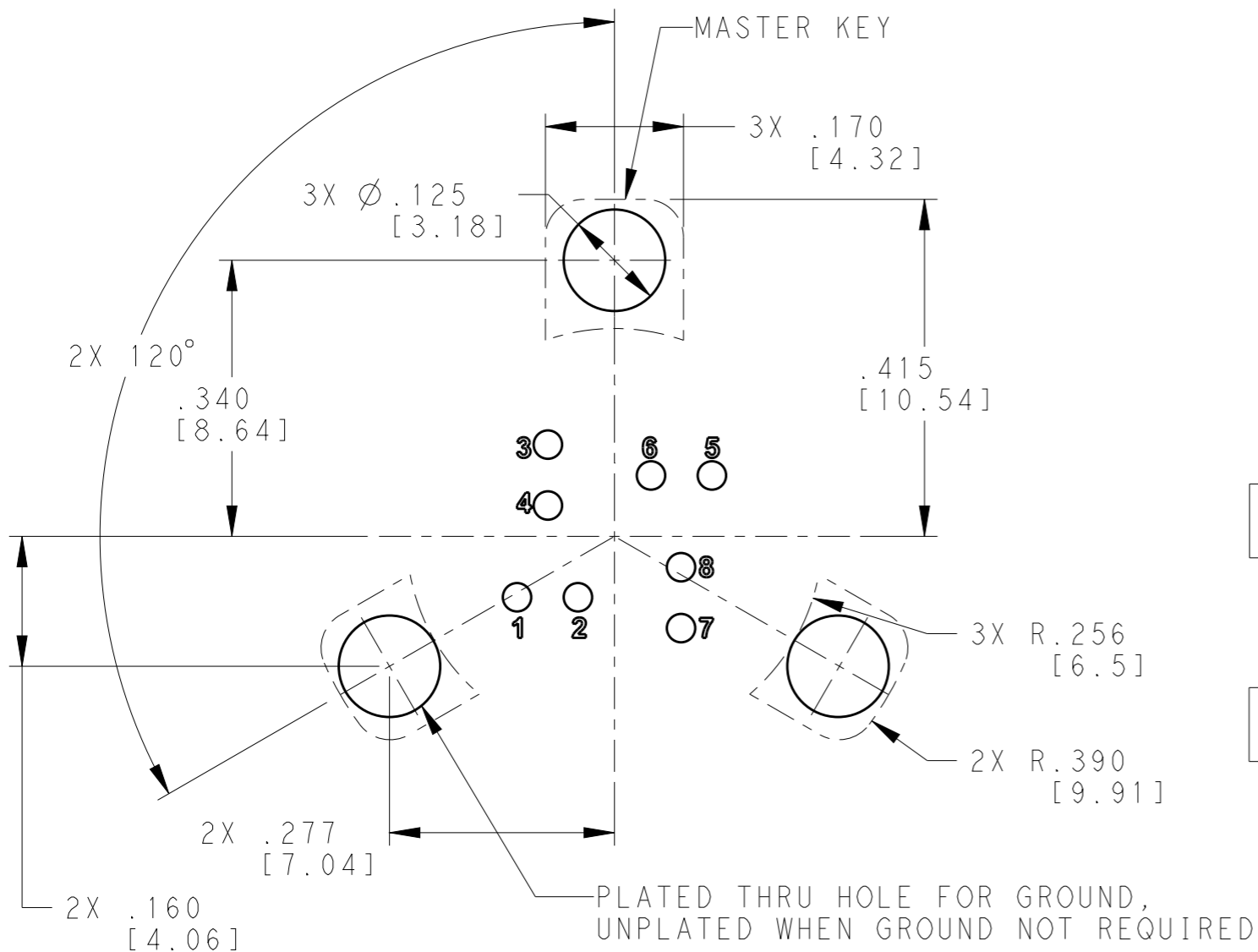
© COPYRIGHT 20 BY -

ALL RIGHTS RESERVED.

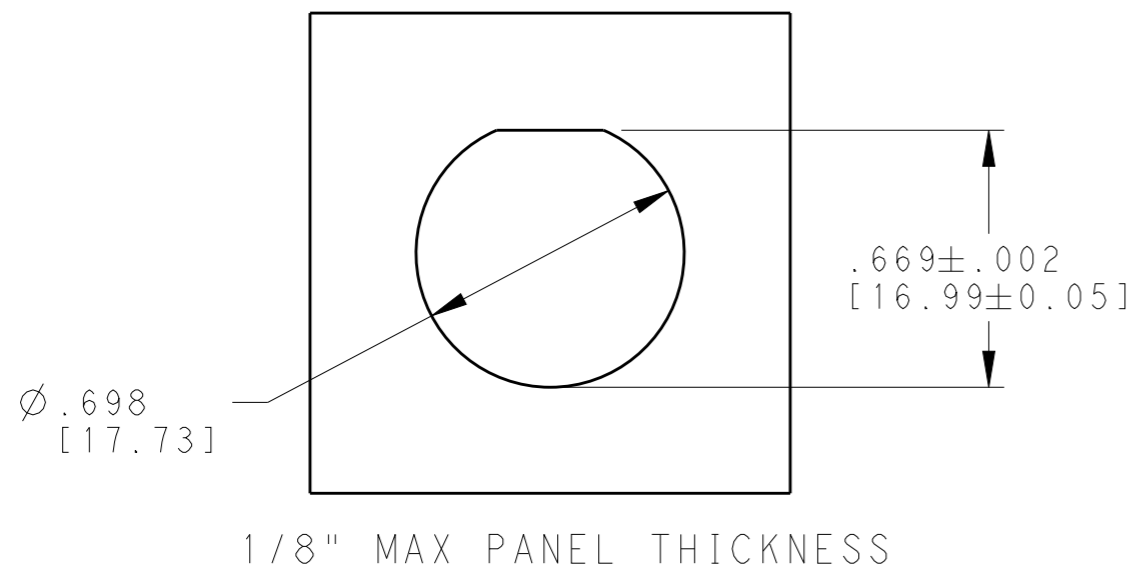
LOC		DIST		REVISIONS			
P	LTR	DESCRIPTION	DATE	DWN	APVD		
-	-	SEE SHEET 1	-	-	-		


RECOMMENDED BOARD LAYOUT MOUNTING HOLE INFORMATION

SOLDER TAIL HOLE INFORMATION



PC BOARD TOP VIEW



THIS DRAWING IS A CONTROLLED DOCUMENT.		DWN	04OCT2011	 TE Connectivity	NAME	PCB MOUNT KIT
		MCKIBBEN, JOHN				
DIMENSIONS:		CHK	04OCT2011			
INCHES [mm]		DOWHOWER, KENNETH				
		APVD	04OCT2011			
		DOWHOWER, KENNETH				
TOLERANCES UNLESS OTHERWISE SPECIFIED:		PRODUCT SPEC				
0 PLC	±-	108-2482				
1 PLC	±	APPLICATION SPEC				
2 PLC	±	114-32025		SIZE	CAGE CODE	DRAWING NO
3 PLC	±.005 [0.13]	WEIGHT		A3	00779	C=2102351
4 PLC	±			RESTRICTED TO		
ANGLES	±-			-		
MATERIAL	-	CUSTOMER DRAWING		SCALE	SHEET	OF
FINISH	-			5:1	2	2
				REV	F	