



Chipsmall Limited consists of a professional team with an average of over 10 year of expertise in the distribution of electronic components. Based in Hongkong, we have already established firm and mutual-benefit business relationships with customers from,Europe,America and south Asia,supplying obsolete and hard-to-find components to meet their specific needs.

With the principle of "Quality Parts,Customers Priority,Honest Operation,and Considerate Service",our business mainly focus on the distribution of electronic components. Line cards we deal with include Microchip,ALPS,ROHM,Xilinx,Pulse,ON,Everlight and Freescale. Main products comprise IC,Modules,Potentiometer,IC Socket,Relay,Connector.Our parts cover such applications as commercial,industrial, and automotives areas.

We are looking forward to setting up business relationship with you and hope to provide you with the best service and solution. Let us make a better world for our industry!



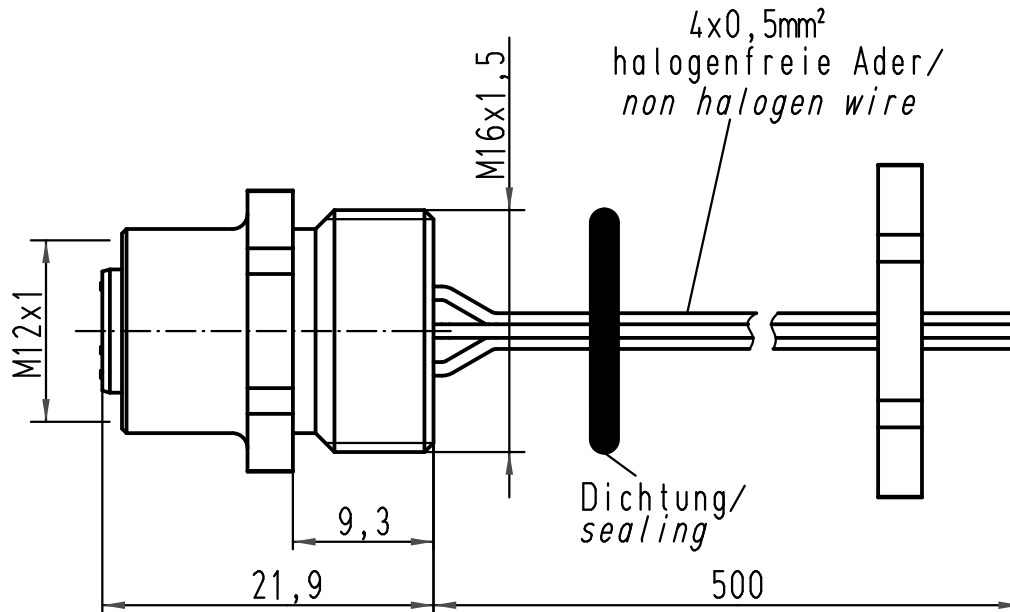
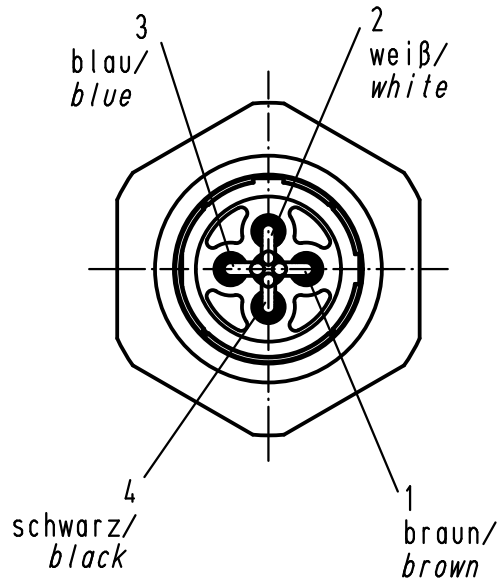
Contact us

Tel: +86-755-8981 8866 Fax: +86-755-8427 6832

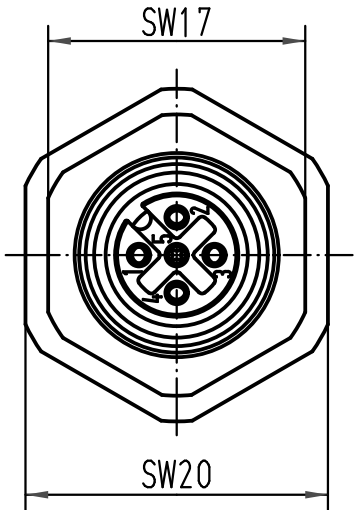
Email & Skype: info@chipsmall.com Web: www.chipsmall.com

Address: A1208, Overseas Decoration Building, #122 Zhenhua RD., Futian, Shenzhen, China



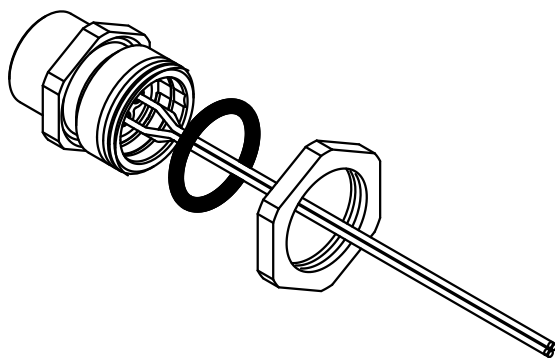
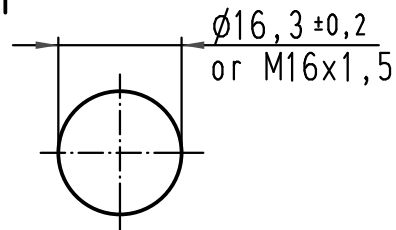




width across flats 17



width across flats 20

Montageausschnitt/
1:1 panel cut out



 All Dimensions in mm Original Size DIN A 4			Techn. Character.			Nicht tolerierte Maß/Free size tolerances	
				Dat.	Name	2:1	Wanddurchführung M12-F Panel feed through M12-F M16x1,5; 4polig; A-kodiert/ M16x1,5; 4poles; A-coded
			Detail.	07.11.06	DY		
			Insp.		SR		
			Stand.				
414065	12.08.08	Ho	HARTING Electric GmbH & Co. KG			 TB 21 03 311 2400	Blatt/ page
413156	28.08.07	Bor	D-32339 Espelkamp				
412529							
Mod.	Dat.	Name				Sub.	