



Chipsmall Limited consists of a professional team with an average of over 10 year of expertise in the distribution of electronic components. Based in Hongkong, we have already established firm and mutual-benefit business relationships with customers from,Europe,America and south Asia,supplying obsolete and hard-to-find components to meet their specific needs.

With the principle of “Quality Parts,Customers Priority,Honest Operation,and Considerate Service”,our business mainly focus on the distribution of electronic components. Line cards we deal with include Microchip,ALPS,ROHM,Xilinx,Pulse,ON,Everlight and Freescale. Main products comprise IC,Modules,Potentiometer,IC Socket,Relay,Connector.Our parts cover such applications as commercial,industrial, and automotives areas.

We are looking forward to setting up business relationship with you and hope to provide you with the best service and solution. Let us make a better world for our industry!



## Contact us

Tel: +86-755-8981 8866 Fax: +86-755-8427 6832

Email & Skype: info@chipsmall.com Web: www.chipsmall.com

Address: A1208, Overseas Decoration Building, #122 Zhenhua RD., Futian, Shenzhen, China



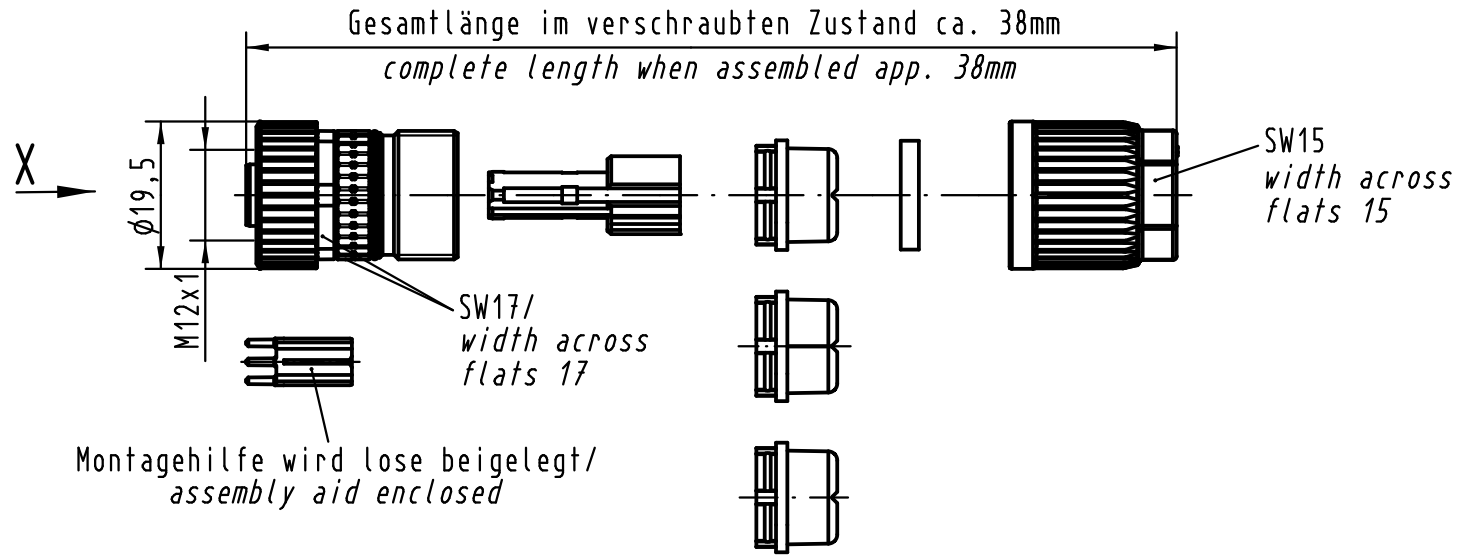
1 2 3 4 5 6

A

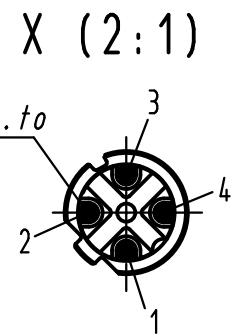
B

C

D

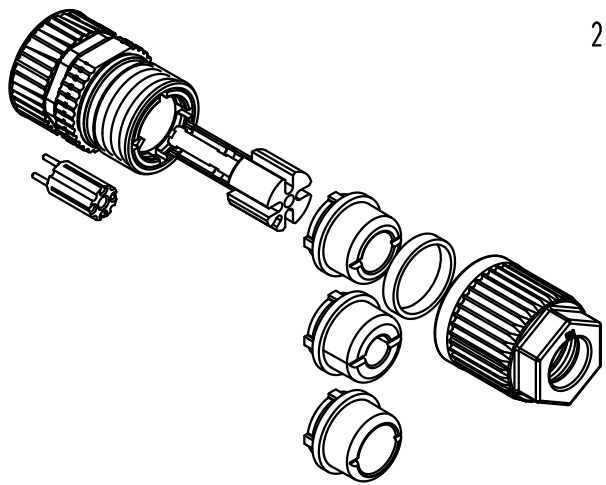


Steckgesicht n.  
Contact face acc. to  
IEC 61076-2-101



Crimpkontakte separat bestellen  
Order contacts separately

Kabelø / Cableø			Leiterquerschnitt	Bestell-Nr.
			Wire gauge	Part-No.
5,5-7,2mm	4,5-5,4mm	7.0-8.8mm	AWG 26-22	09 67 000 5476
Dichtung / Sealing			AWG 24-20	09 67 000 8476
schwarz/black	transparent	beige		



All Dimensions in mm Original Size DIN A 4			Techn. Character.			Nicht tolerierte Maße/ Free size tolerances			
Mod.	Dat.	Name		Dat.	Name	Maßstab/Scale <b>1:1</b>	M12-L WDF geschirmt, crimp, Buchse, 4-polig, D-kodiert Circular connector shielded, crimp, female, D-coded, 4-pole		
EC04038	11.11.11	DY							
EC03243	20.05.11	DY	Detail.	02.08.07	DY				
EC02795	28.01.11	DY	Insp.		SR				
EC01106	23.11.09	DY	Stand.						
414337	17.06.09	DY	HARTING Electronics GmbH & Co. KG D-32339 ESPELKAMP				TB 21 03 882 2405		
414043	28.07.08	DY							
Mod.	Dat.	Name							
							Sub.	Blatt/ page	