



Chipsmall Limited consists of a professional team with an average of over 10 year of expertise in the distribution of electronic components. Based in Hongkong, we have already established firm and mutual-benefit business relationships with customers from,Europe,America and south Asia,supplying obsolete and hard-to-find components to meet their specific needs.

With the principle of “Quality Parts,Customers Priority,Honest Operation,and Considerate Service”,our business mainly focus on the distribution of electronic components. Line cards we deal with include Microchip,ALPS,ROHM,Xilinx,Pulse,ON,Everlight and Freescale. Main products comprise IC,Modules,Potentiometer,IC Socket,Relay,Connector.Our parts cover such applications as commercial,industrial, and automotives areas.

We are looking forward to setting up business relationship with you and hope to provide you with the best service and solution. Let us make a better world for our industry!



Contact us

Tel: +86-755-8981 8866 Fax: +86-755-8427 6832

Email & Skype: info@chipsmall.com Web: www.chipsmall.com

Address: A1208, Overseas Decoration Building, #122 Zhenhua RD., Futian, Shenzhen, China



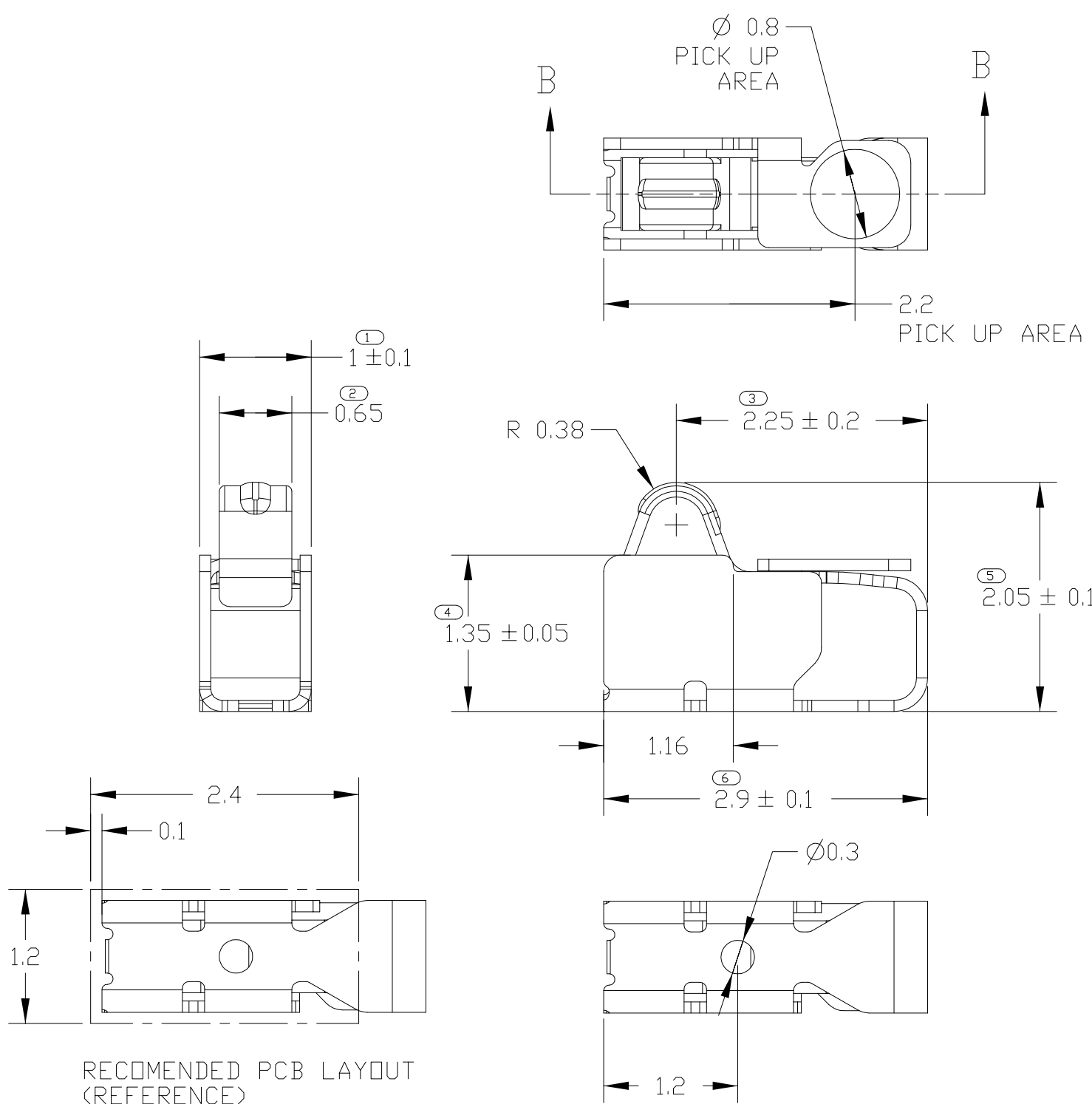
LOC	DIST	REVISIONS				
		P	LTR	DESCRIPTION	DATE	DWN APVD
-	-		B	REVISED	05JUNE2013	IC.K JH.K
			C	REVISED	13JUNE2013	IC.K JH.K
			C1	REVISED	19JAN2015	IC.K JH.K
			C2	REVISED	06FEB2015	IC.K JH.K

D

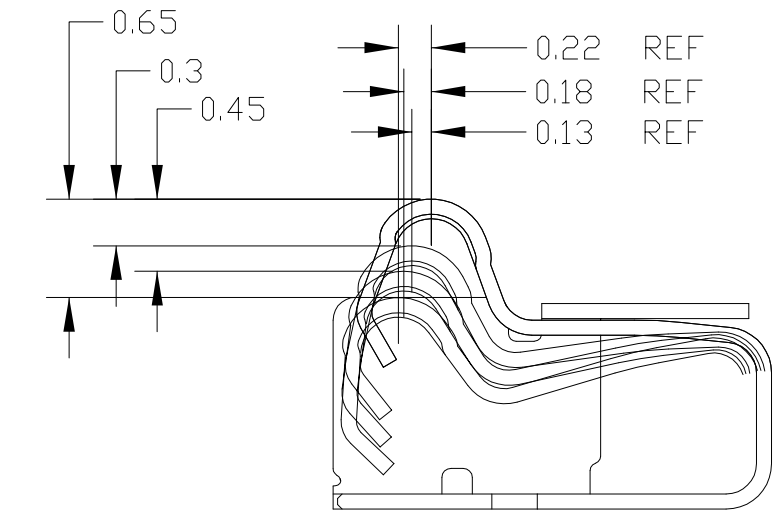
C

B

A



AS SHOWN
2108612-5
C2-2108612-6



SECTION B-B
STROKE CONDITION(REFERENCE)

- 1. MATERIAL: COPPER ALLOY, THK.=0.1mm
- 2. FINISH: NI UNDER PLATING ALL OVER 0.8~3.0um
CONTACT PLATING: Au 0.1~0.4um
SOLDER PLATING: Au FLASH 0.05~0.35um
- 3. CUTTING BURR: 0.05mm MAX.
- 4. PRODUCT SPEC

NO	PART NUMBER	PRODUCT SPEC
1	2108612-5	108-61187
2	2-2108612-6	108-61252

THIS DRAWING IS A CONTROLLED DOCUMENT.

DIMENSIONS:
mm

MATERIAL

1

TOLERANCES UNLESS OTHERWISE SPECIFIED:
±0.15

0-PLC ±

1-PLC ±0.5

2-PLC ±0.13

3-PLC ±0.013

4-PLC ±0.0001

ANGLES ±

FINISH

2

DWN IC KANG 05APR2013

CHK JH KIM 05APR2013

APVD JH KIM 05APR2013

PRODUCT SPEC

SEE TABLE 4

APPLICATION SPEC

-

WEIGHT -

CUSTOMER DRAWING

TE Connectivity

NAME

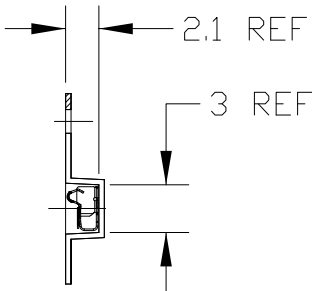
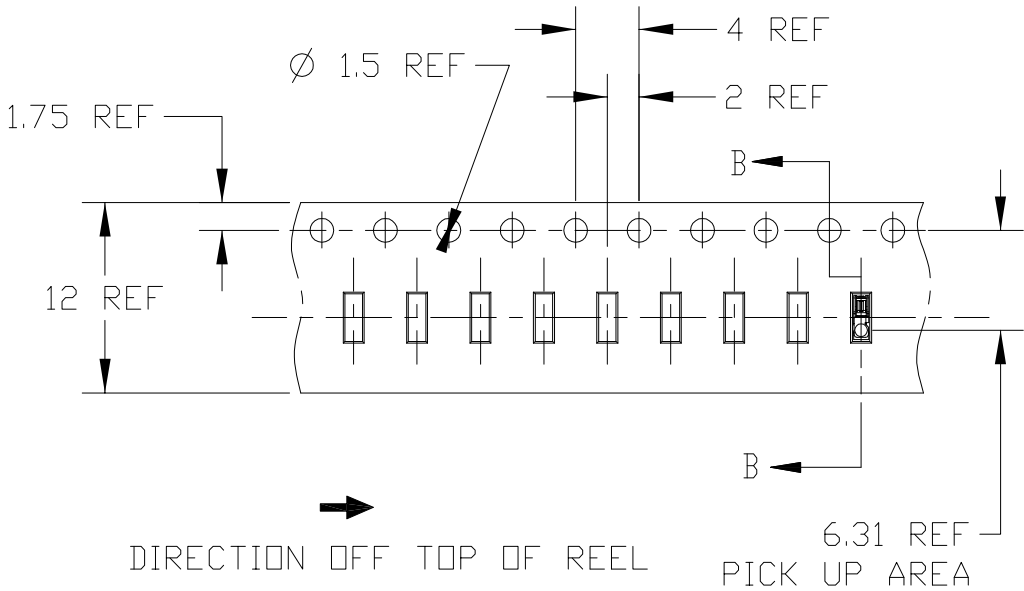
SIZE CAGE CODE DRAWING NO RESTRICTED TO

A300779 C-2108612

SCALE 20:1 SHEET 1 OF 2 REV C2


SPRING FINGER 2.05H

LOC —	DIST —	REVISIONS					
		P	LTR	DESCRIPTION	DATE	DWN	APVD
				SEE SHEET 1			



SECTION B-B

TE


EAG63613001-YYYYMMDD-*****-HK000120
SPEC:2.05H SPRING FINGER WITH EMBOSS
Company Name:TE CONNECTIVITY
Tyco Part Number :2108612-5

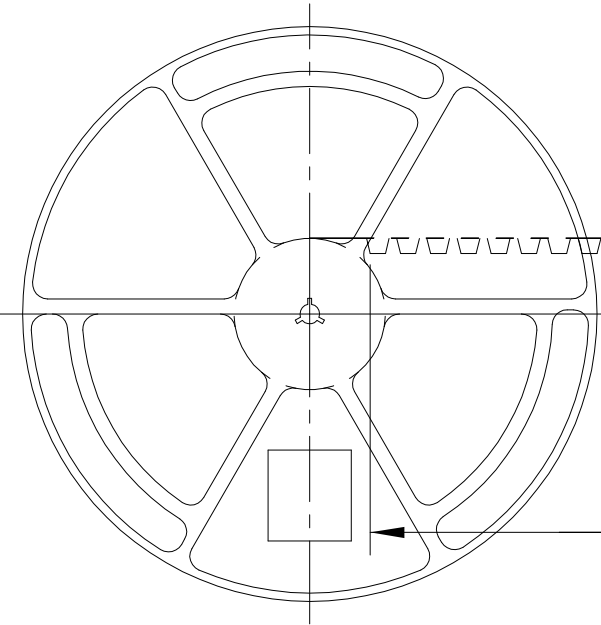
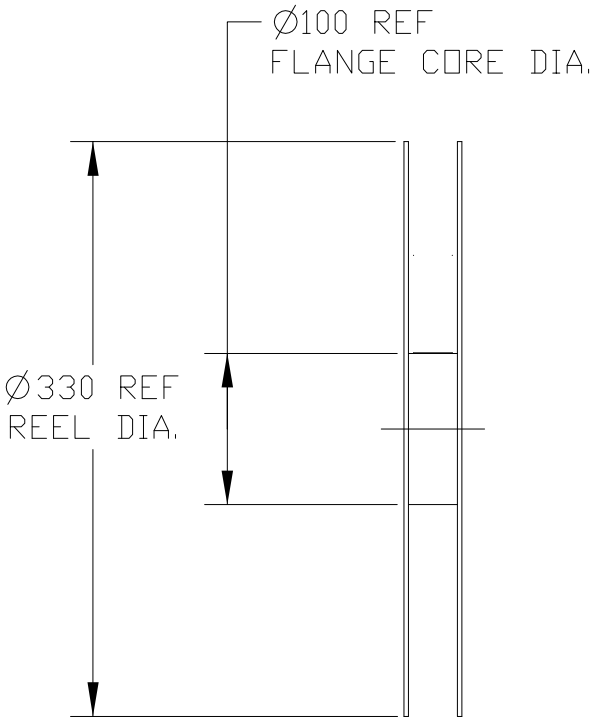
RoHS

H/F

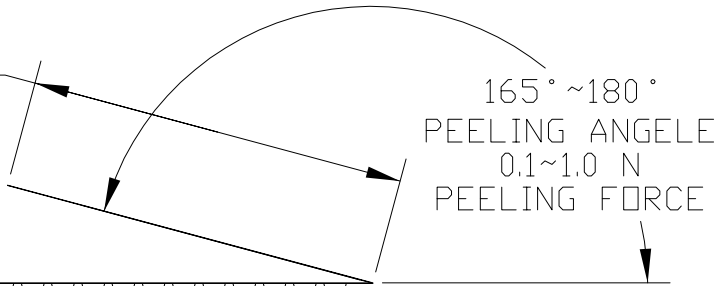
100

70

1. LG PART NO.
2. FINAL INSPECTION(YYMMDD)
3. VENDOR PRODUCTION LOT NO.
4. VENDOR CODE



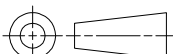
WEEDING THE COVER TAPE,
AROUND THE OUTER
PERIPHERY IN
A TURN.



WITH PRODUCT CHARGE
7000EA/REEL

WITHOUT CHARGE
400mm

WITHOUT CHARGE
160mm

THIS DRAWING IS A CONTROLLED DOCUMENT.		DWN IC KANG CHK JH KIM APVD JH KIM	05APR2013 05APR2013 05APR2013		<div><div><div></div></div>TE</div> TE Connectivity									
DIMENSIONS: mm		TOLERANCES UNLESS OTHERWISE SPECIFIED: ± 0.15		NAME SPRING FINGER 2.05H										
		0 PLC ± 1 PLC ±0.5 2 PLC ±0.13 3 PLC ±0.013 4 PLC ±0.0001 ANGLES ±		PRODUCT SPEC 108-XXXXX		APPLICATION SPEC -		SIZE A3	CAGE CODE 00779	DRAWING NO C-2108612	RESTRICTED TO -			
MATERIAL -		FINISH -		WEIGHT -		CUSTOMER DRAWING					SCALE 20:1	SHEET 2	OF 2	REV C2