



Chipsmall Limited consists of a professional team with an average of over 10 year of expertise in the distribution of electronic components. Based in Hongkong, we have already established firm and mutual-benefit business relationships with customers from,Europe,America and south Asia,supplying obsolete and hard-to-find components to meet their specific needs.

With the principle of “Quality Parts,Customers Priority,Honest Operation,and Considerate Service”,our business mainly focus on the distribution of electronic components. Line cards we deal with include Microchip,ALPS,ROHM,Xilinx,Pulse,ON,Everlight and Freescale. Main products comprise IC,Modules,Potentiometer,IC Socket,Relay,Connector.Our parts cover such applications as commercial,industrial, and automotives areas.

We are looking forward to setting up business relationship with you and hope to provide you with the best service and solution. Let us make a better world for our industry!



## Contact us

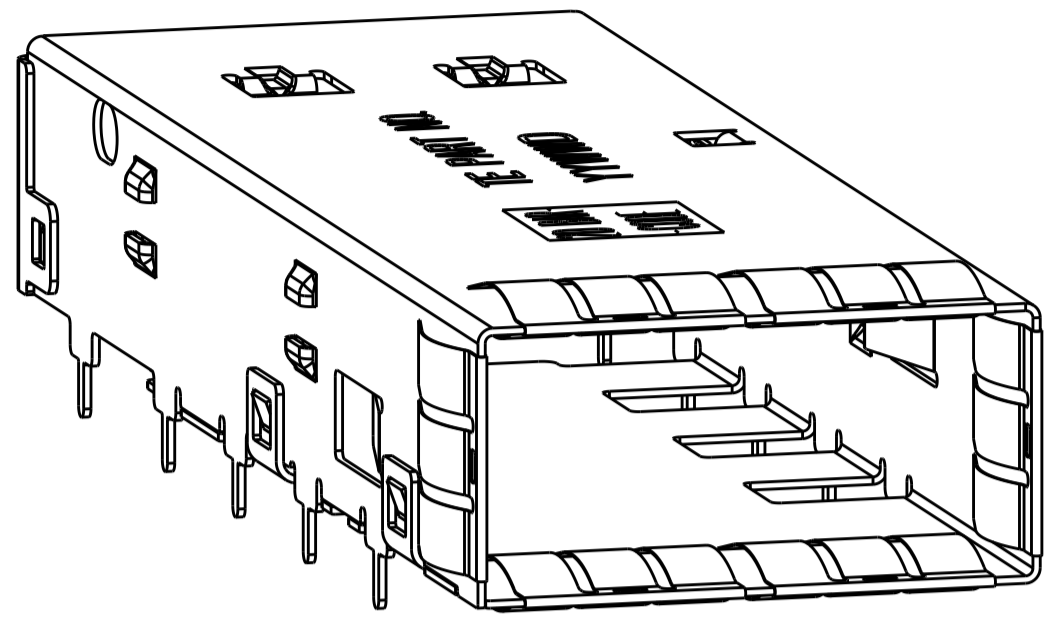
Tel: +86-755-8981 8866 Fax: +86-755-8427 6832

Email & Skype: info@chipsmall.com Web: www.chipsmall.com

Address: A1208, Overseas Decoration Building, #122 Zhenhua RD., Futian, Shenzhen, China

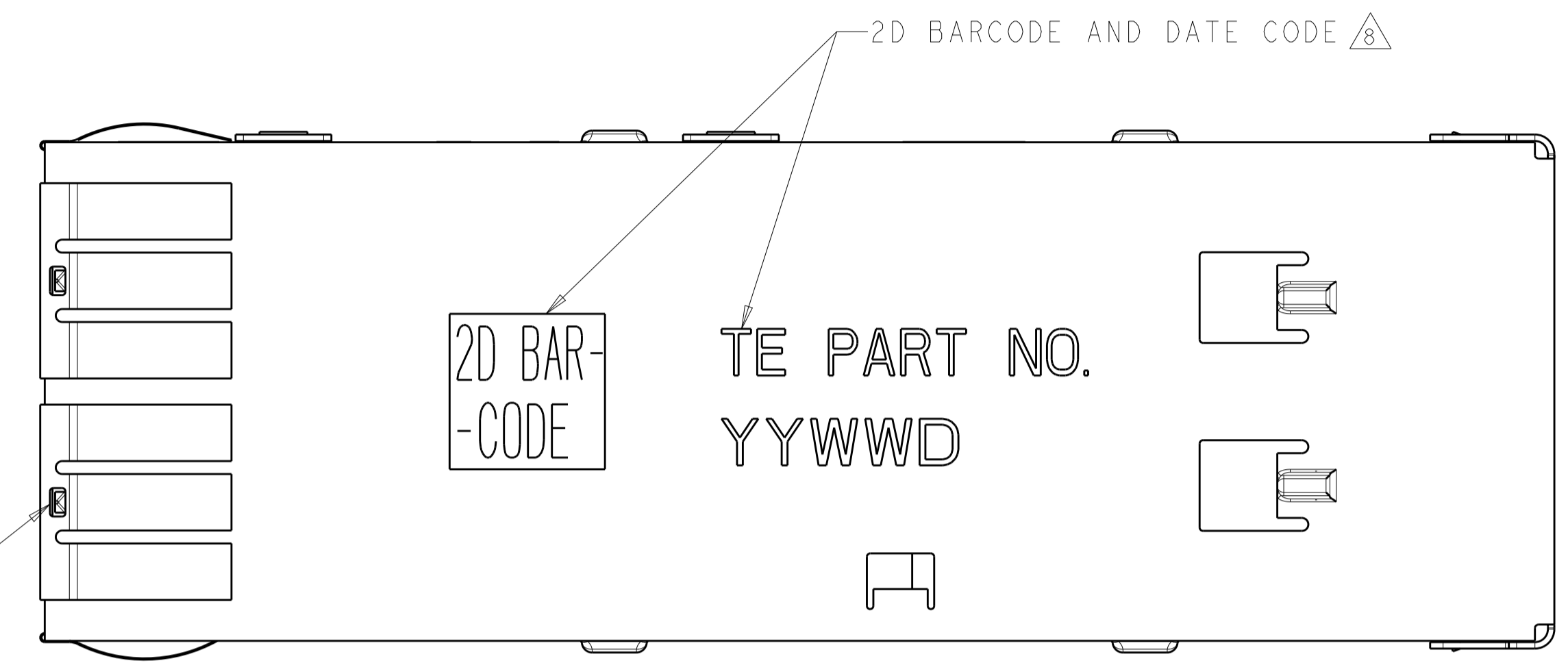


LOC	DIST	REVISIONS					
GP	00	P.	LTN	DESCRIPTION	DATE	DWN	APVD
		3		REVISED	29OCT2009	CR	JP
		4		REVISED	08DEC2010	CJV	EJB
		5		REVISE PER ECO-14-016878	5MAR2015	RG	MC



ISOMETRIC VIEW  
SCALE 4:1

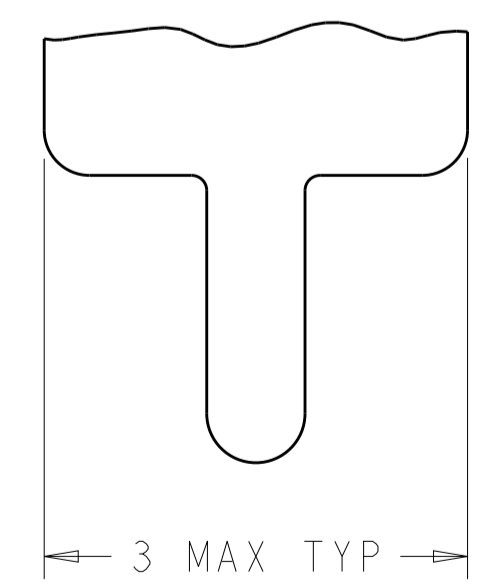
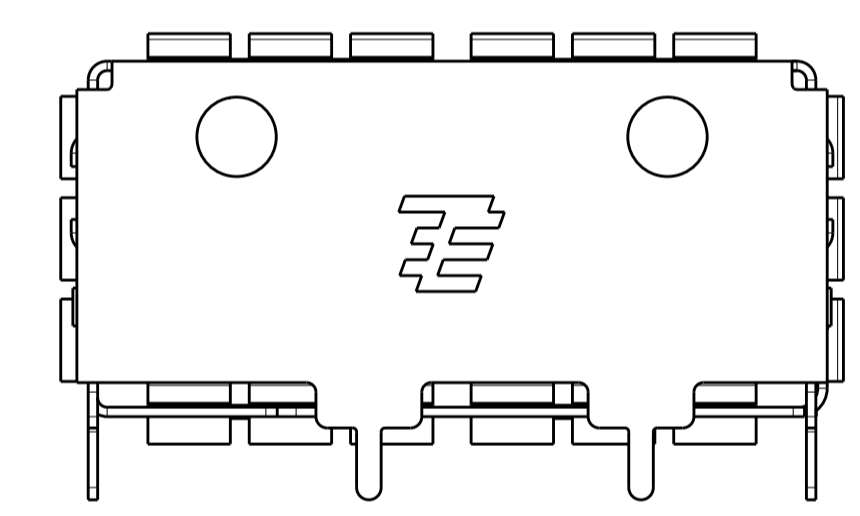
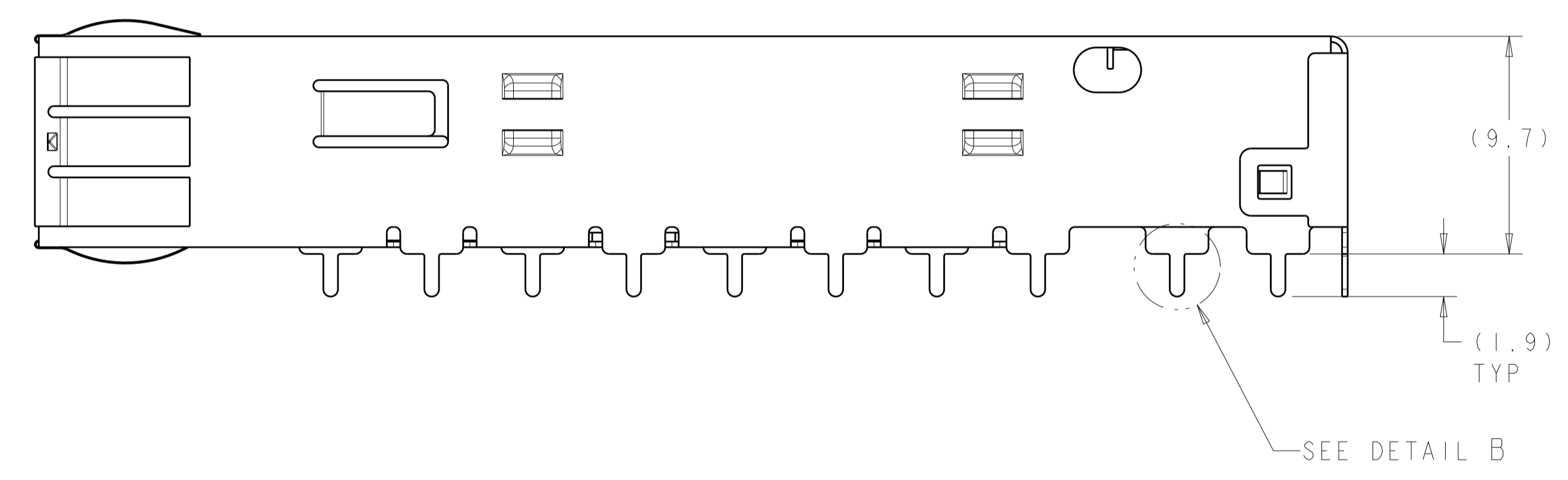
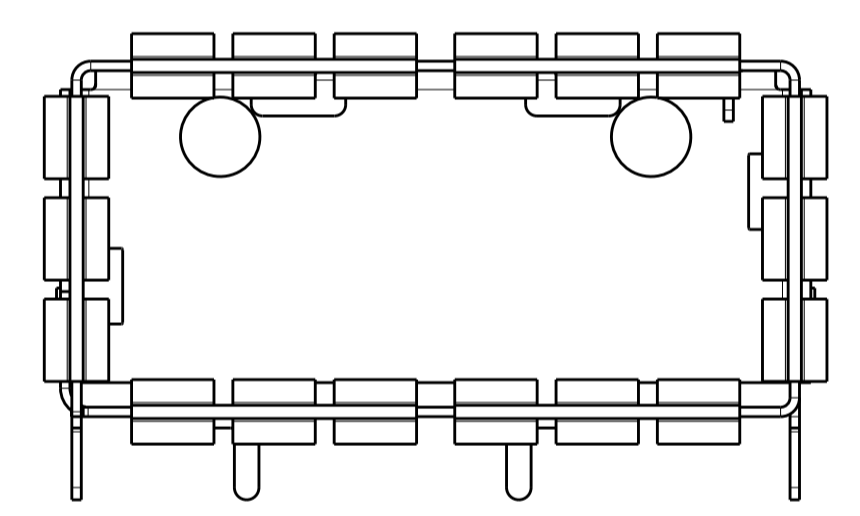
Sn42Bi58 SOLDER  
6 PLACES



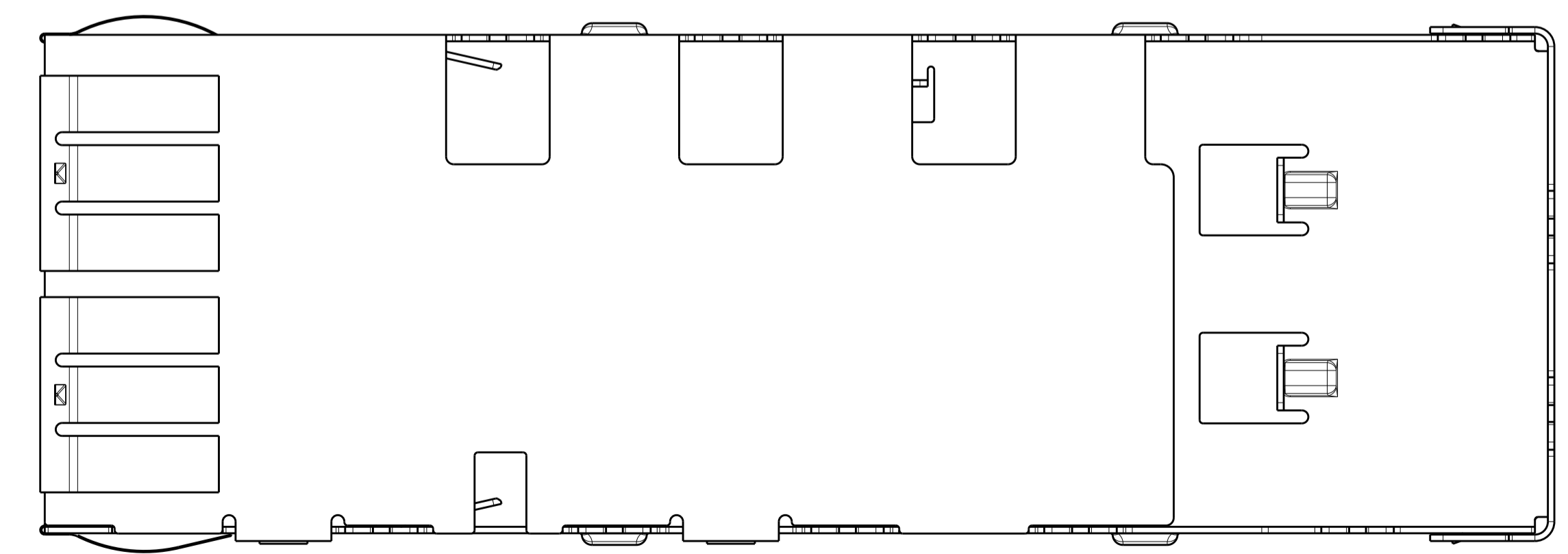
2D BAR-CODE

TE PART NO.  
YYWW

2D BARCODE AND DATE CODE



DETAIL B  
SCALE 20:1

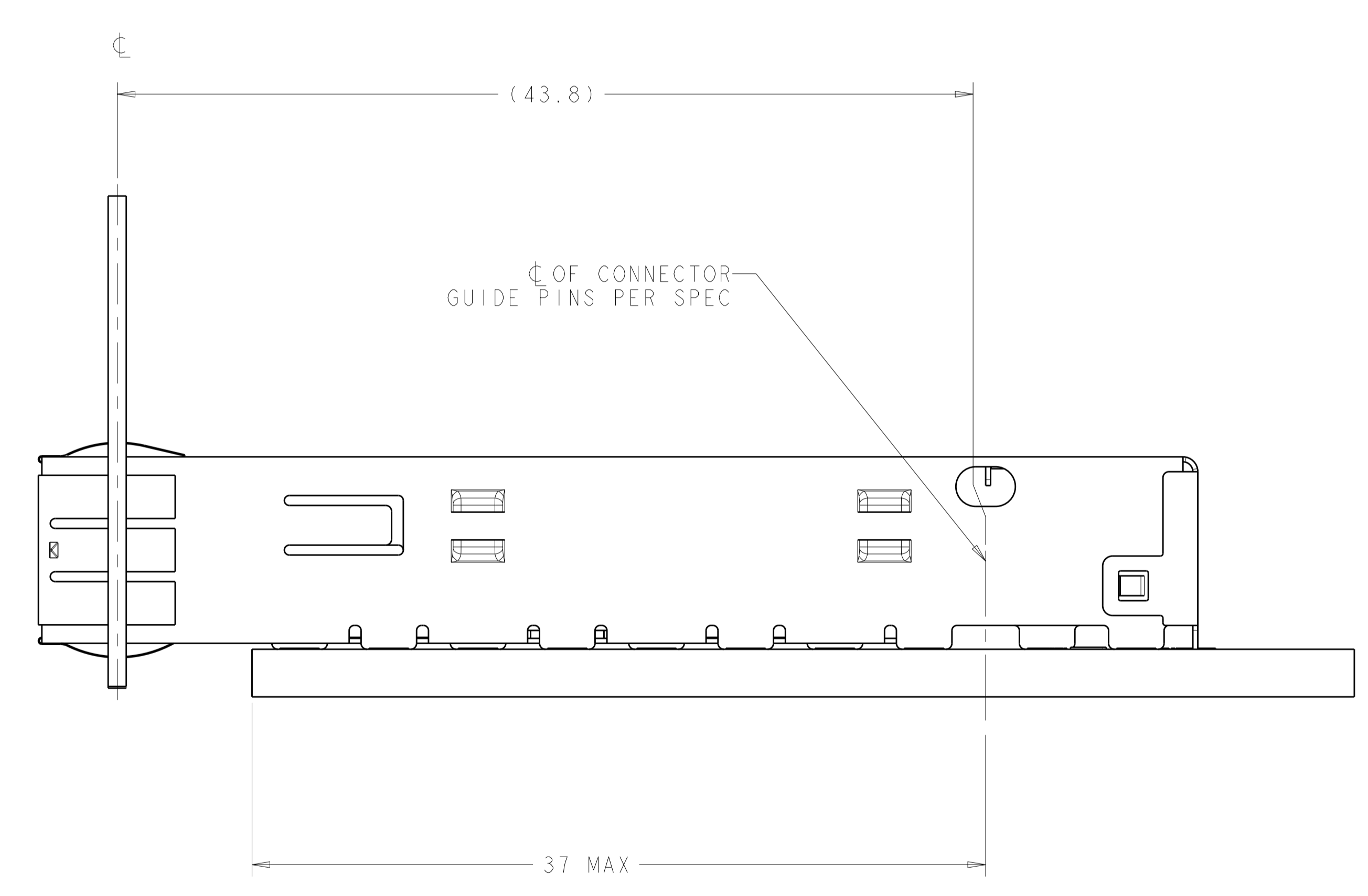
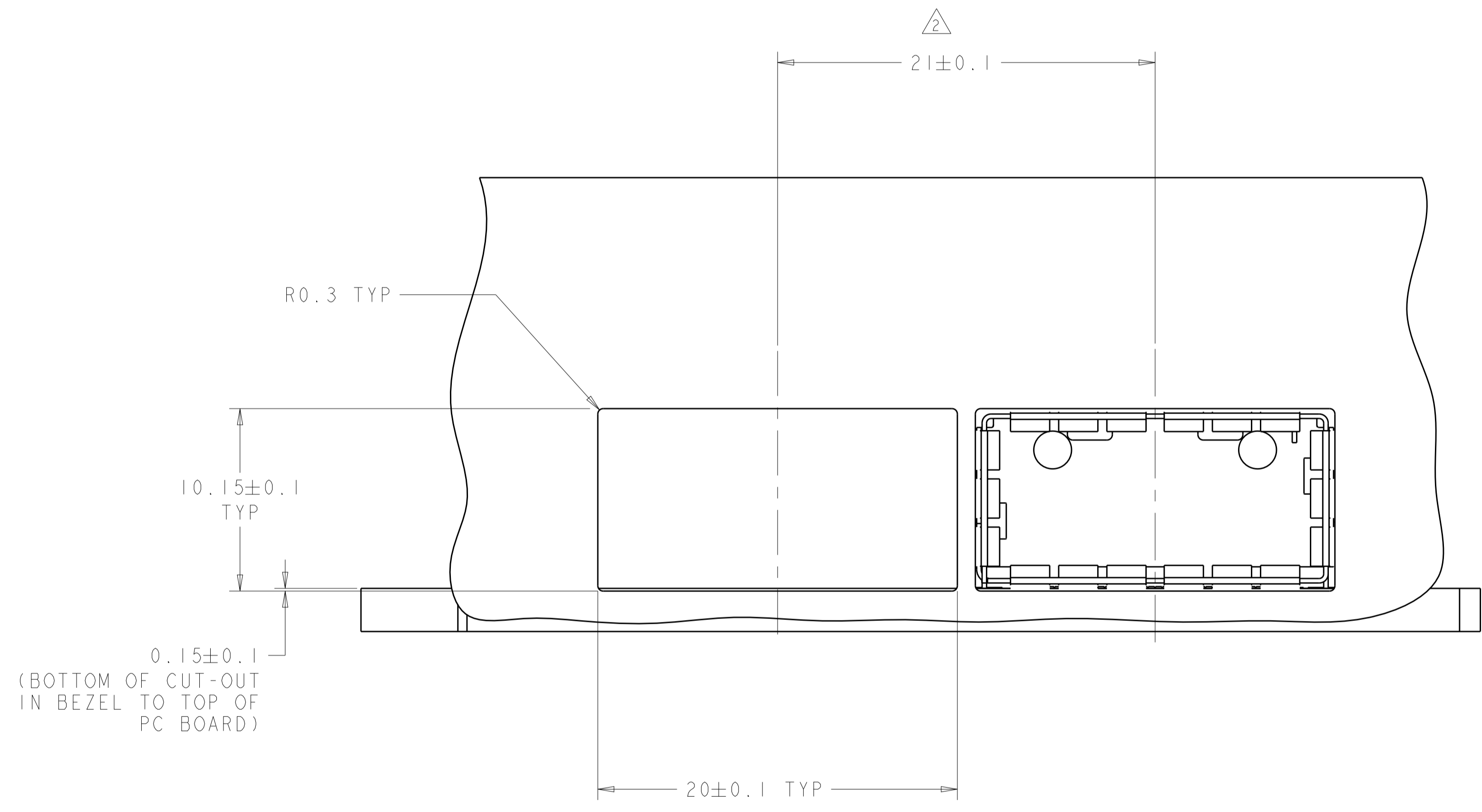


- 1 MATERIAL:  
CAGE - 0.25 THICK NICKEL SILVER  
SPRINGS - COPPER ALLOY
- 2 MINIMUM PITCH DIMENSION.
- 3. MATES WITH QSFP MSA COMPATIBLE TRANSCEIVER.
- 4 DATUM AND BASIC DIMENSIONS ESTABLISHED BY CUSTOMERS.
- 5. MINIMUM PC BOARD THICKNESS:  
SINGLE SIDED: 1.45mm  
DOUBLE SIDED: 2.2mm
- 6 DATUM -A- IS TOP SURFACE OF THE HOST BOARD.
- 7 SURFACE TRACES PERMITTED WITHIN THIS AREA EXCEPT WHERE CAGE STANDOFFS, SHOWN IN DETAIL J, CONTACT PC BOARD.
- 8 2D BARCODE AND DATE CODE (YYWW) MARKED APPROXIMATELY AS SHOWN.
- 9 FINISH:  
SPRINGS - 0.8µm MIN TIN OVER 0.8µm MIN NICKEL,  
NON-PLATED EDGES PERMISSIBLE.
- 10. PRODUCT HAS NOT COMPLETED QUALIFICATION TESTING.

2110487-1  
PART NUMBER

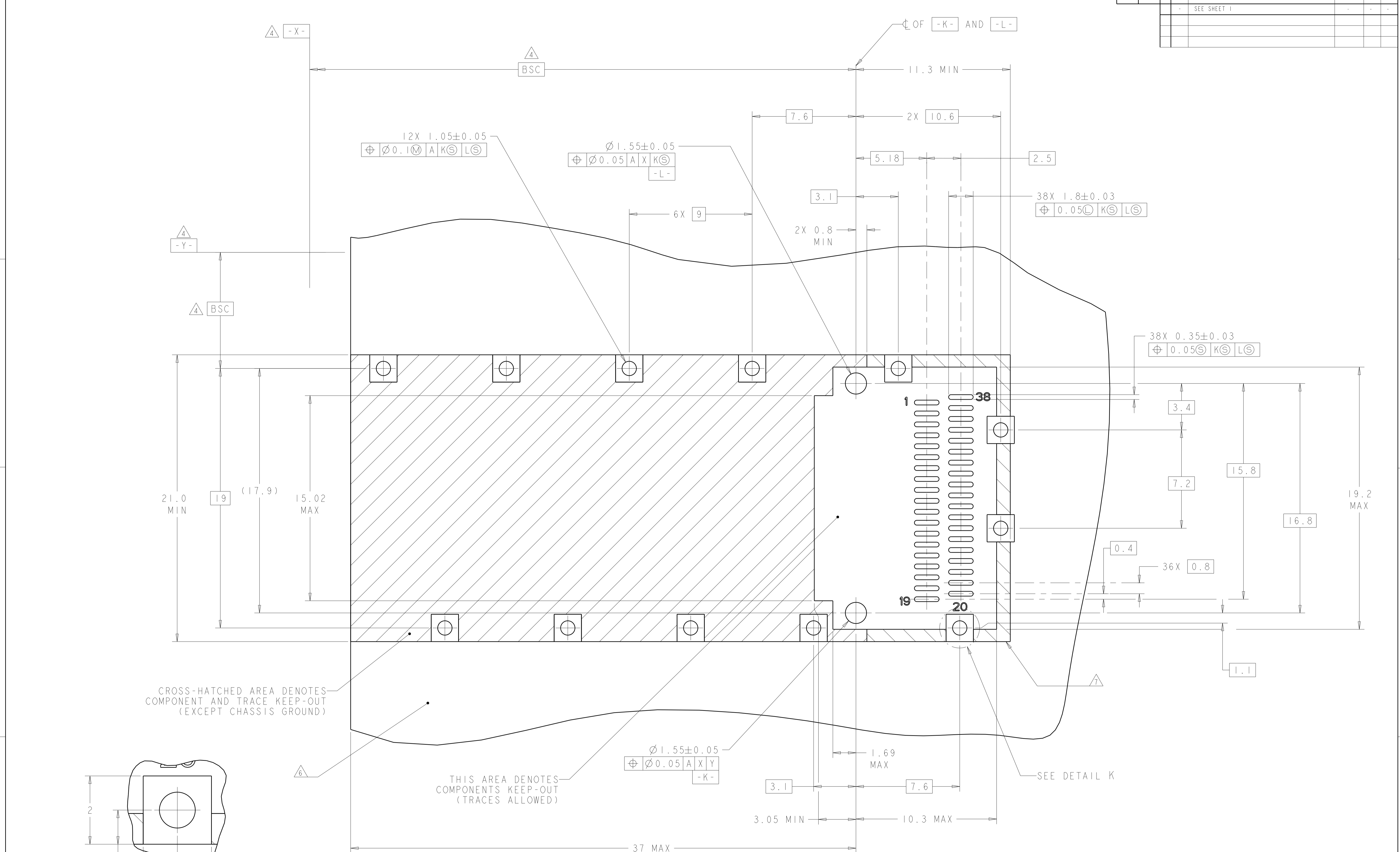
<small>THIS DRAWING IS UNPUBLISHED. RELEASED FOR PUBLICATION BY TYCO ELECTRONICS CORPORATION. ALL RIGHTS RESERVED.</small>		DWN Z.M.BEAM 22SEP2009 CHK J.R.PETERSON 22SEP2009 APVD B.H.WERTZ 22SEP2009	Tyco Electronics Harrisburg, PA 17105-3608
DIMENSIONS: mm 	TOLERANCES UNLESS OTHERWISE SPECIFIED: 0 PLC ±0.1 1 PLC ±0.1 2 PLC ±0.1 3 PLC ±0.1 4 PLC ±0.1 ANGLES ±°	NAME PRODUCT SPEC APPLICATION SPEC SIZE CAGE CODE DRAWING NO WEIGHT CUSTOMER DRAWING	Tyco Electronics Harrisburg, PA 17105-3608 NAME QSFPCAGE ASSEMBLY SOLDER, THRU BEZEL RESTRICTED TO A 100779 C=2110487 SCALE 5:1 SHEET 1 OF 5 REV 5

LOC	DIST	REVISIONS					
GP	00	P	LTN	DESCRIPTION	DATE	DWN	APVD
-	-	-	-	SEE SHEET 1	-	-	-



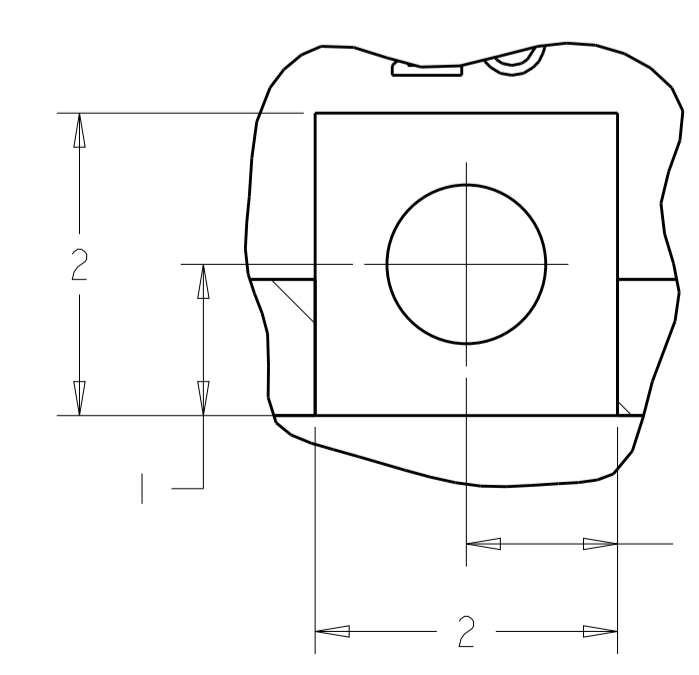
<small>THIS DRAWING IS UNPUBLISHED. RELEASED FOR PUBLICATION BY TYCO ELECTRONICS CORPORATION. ALL RIGHTS RESERVED.</small>		DWN: Z.M. REAM 22SEP2009 CHK: J.R. PETERSON 22SEP2009 APVD: B.H. WERTZ 22SEP2009	Tyco Electronics Harrisburg, PA 17105-3608
DIMENSIONS: mm 	TOLERANCES UNLESS OTHERWISE SPECIFIED: 0 PLC $\pm 0.1$ 1 PLC $\pm 0.1$ 2 PLC $\pm 0.1$ 3 PLC $\pm 0.1$ 4 PLC $\pm 0.1$ ANGLES $\pm 0.1$ FINISH -	NAME: QSFP PRODUCT SPEC: 108-2286 APPLICATION SPEC: 114-13217 WEIGHT: - CUSTOMER DRAWING	SIZE: A CAGE CODE: 00779 DRAWING NO: C=2110487 RESTRICTED TO: - SCALE: 5:1 SHEET: 2 OF 5 REV: 5

LOC	DIST	REVISIONS					
GP	00	P.	LTH	DESCRIPTION	DATE	DWN	APVD
		-		SEE SHEET 1			



CROSS-HATCHED AREA DENOTES COMPONENT AND TRACE KEEP-OUT (EXCEPT CHASSIS GROUND)

THIS AREA DENOTES COMPONENTS KEEP-OUT (TRACES ALLOWED)

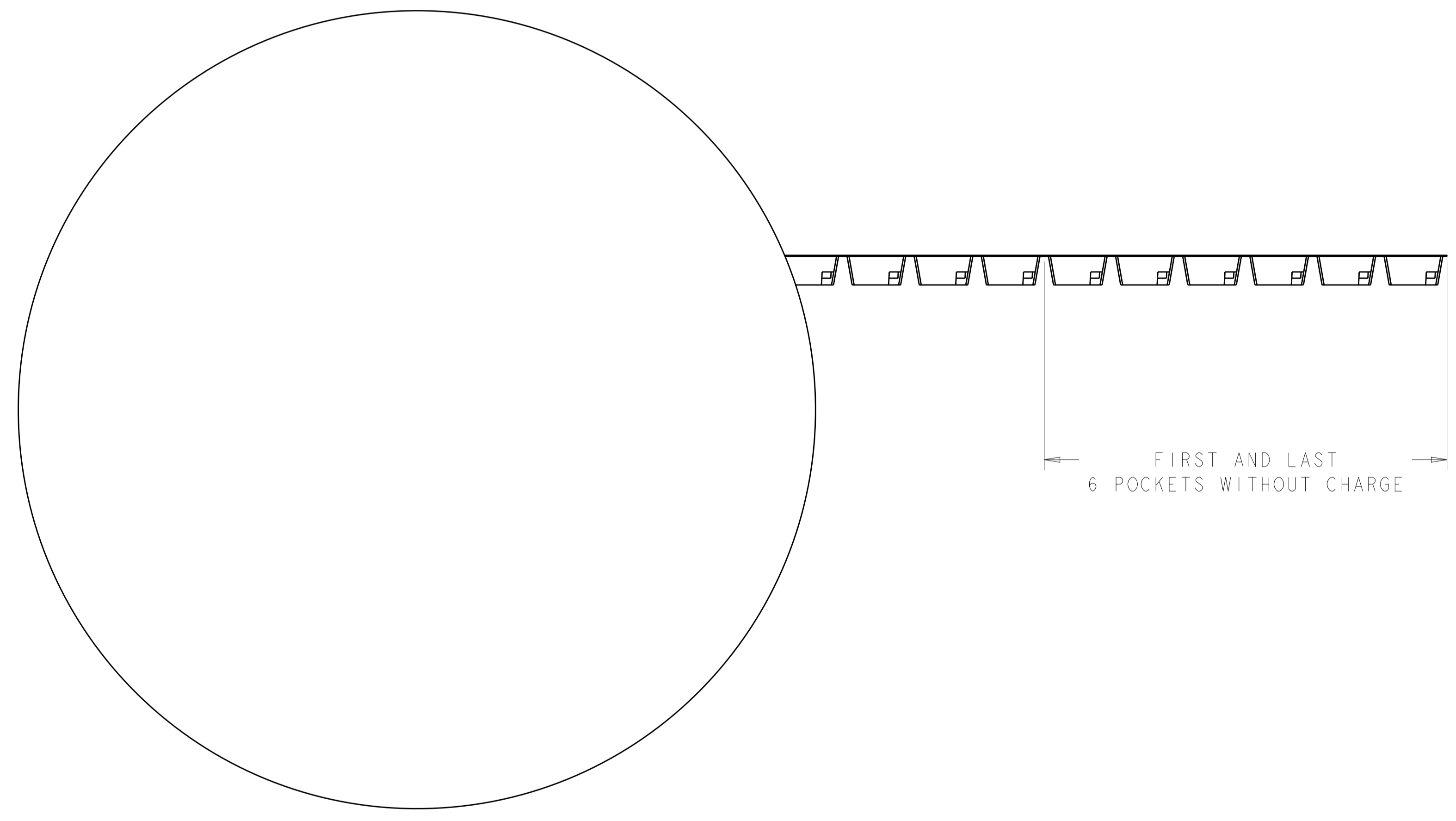
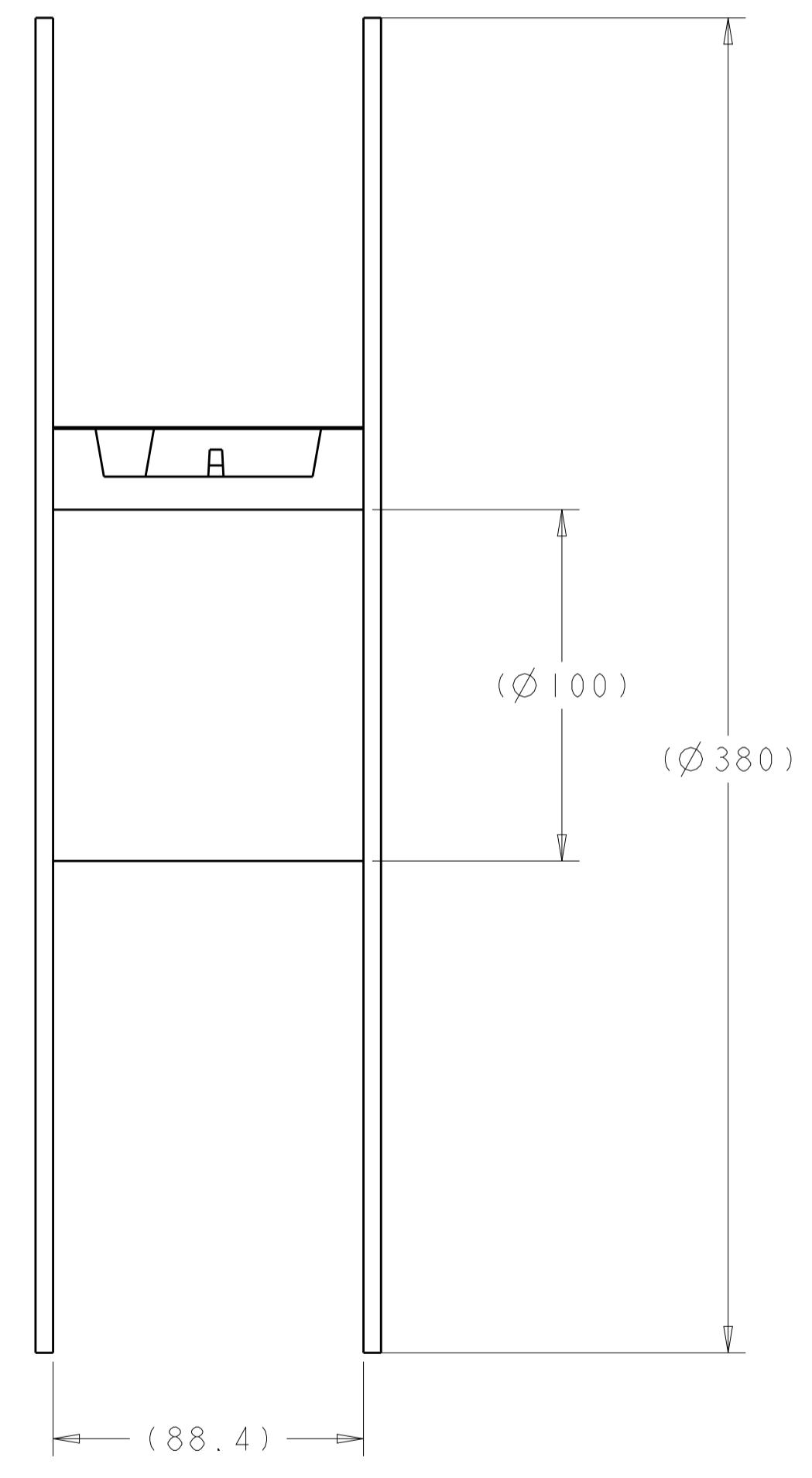
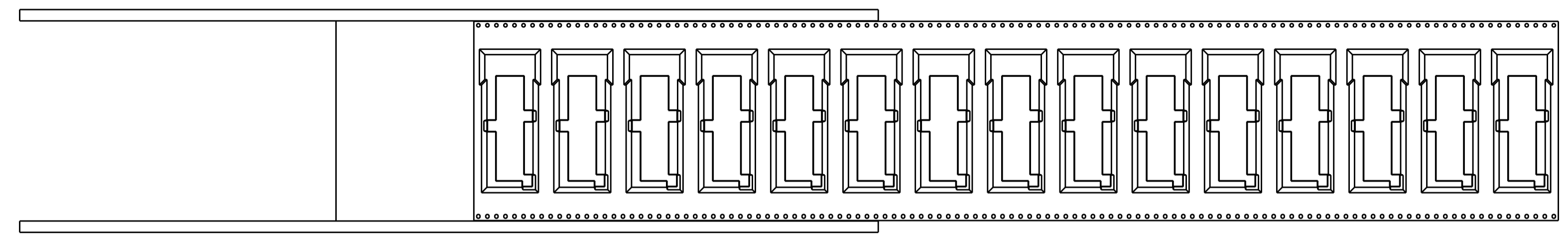


DETAIL K  
SCALE 20:1

RECOMMENDED PC BOARD LAYOUT  
SCALE 8:1

<small>THIS DRAWING IS UNPUBLISHED. RELEASED FOR PUBLICATION BY TYCO ELECTRONICS CORPORATION. ALL RIGHTS RESERVED.</small>		DWN: Z.M.BEAM 22SEP2009 CHK: J.R.PETERSON 22SEP2009 APVD: B.H.WERTZ 22SEP2009	Tyco Electronics Harrisburg, PA 17105-3608
DIMENSIONS: mm 	TOLERANCES UNLESS OTHERWISE SPECIFIED: 0 PLC ±0.1 1 PLC ±0.1 2 PLC ±0.1 3 PLC ±0.1 4 PLC ±0.1 ANGLES ±°	NAME: QSPF PRODUCT SPEC: 108-2286 APPLICATION SPEC: 114-13217 WEIGHT: - CUSTOMER DRAWING	Tyco Electronics Harrisburg, PA 17105-3608 NAME: QSPF PRODUCT SPEC: 108-2286 APPLICATION SPEC: 114-13217 WEIGHT: - CUSTOMER DRAWING
MATERIAL: - FINISH: -		SCALE: 5:1 SHEET: 3 of 5 REV: 5	RESTRICTED TO: -

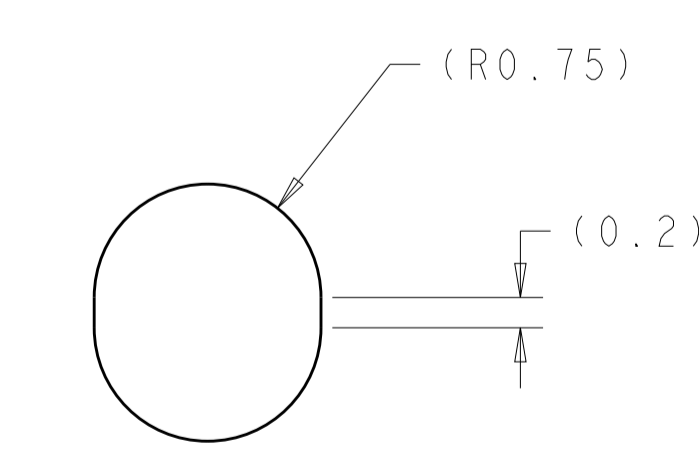
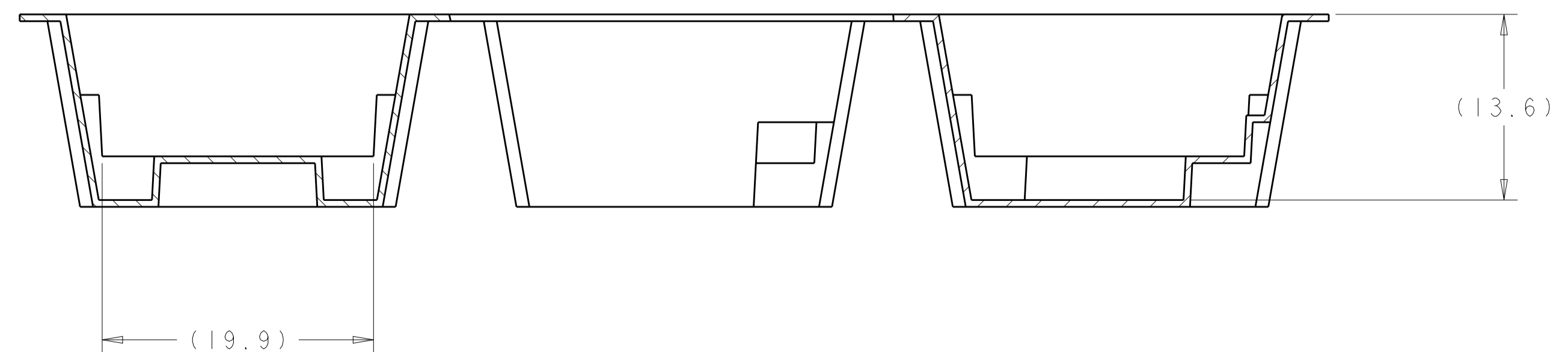
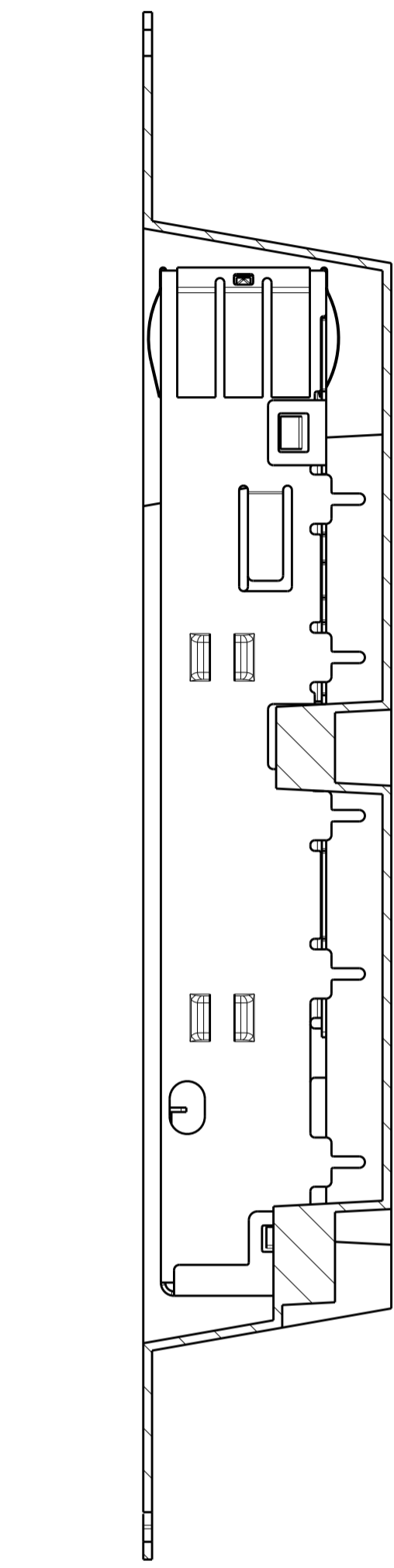
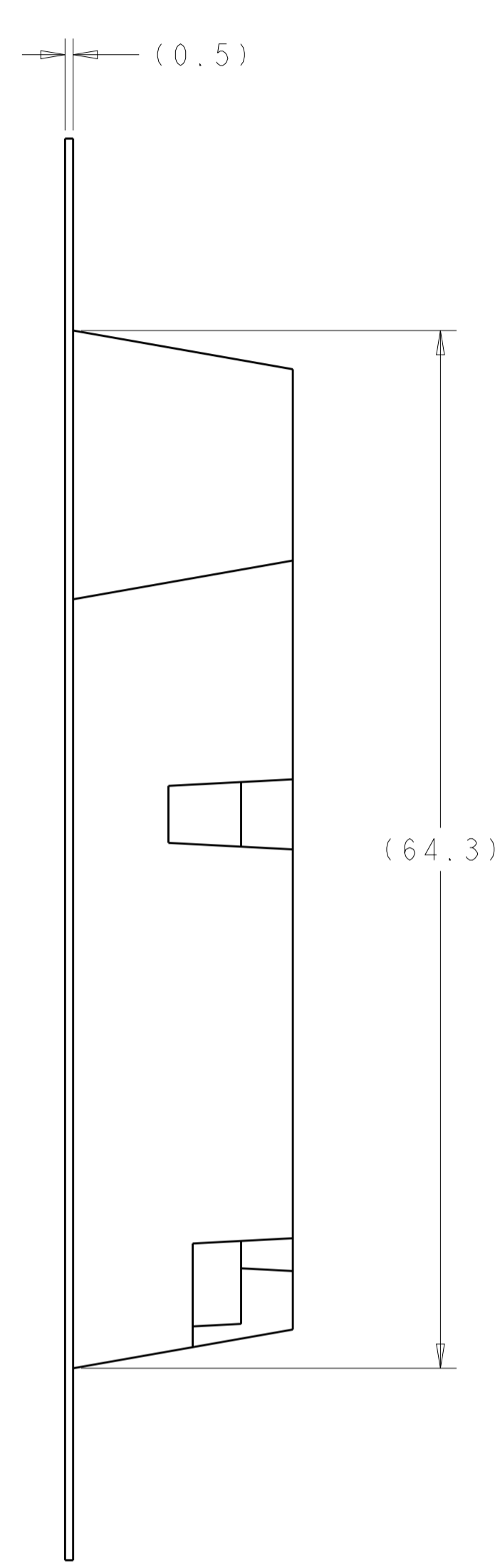
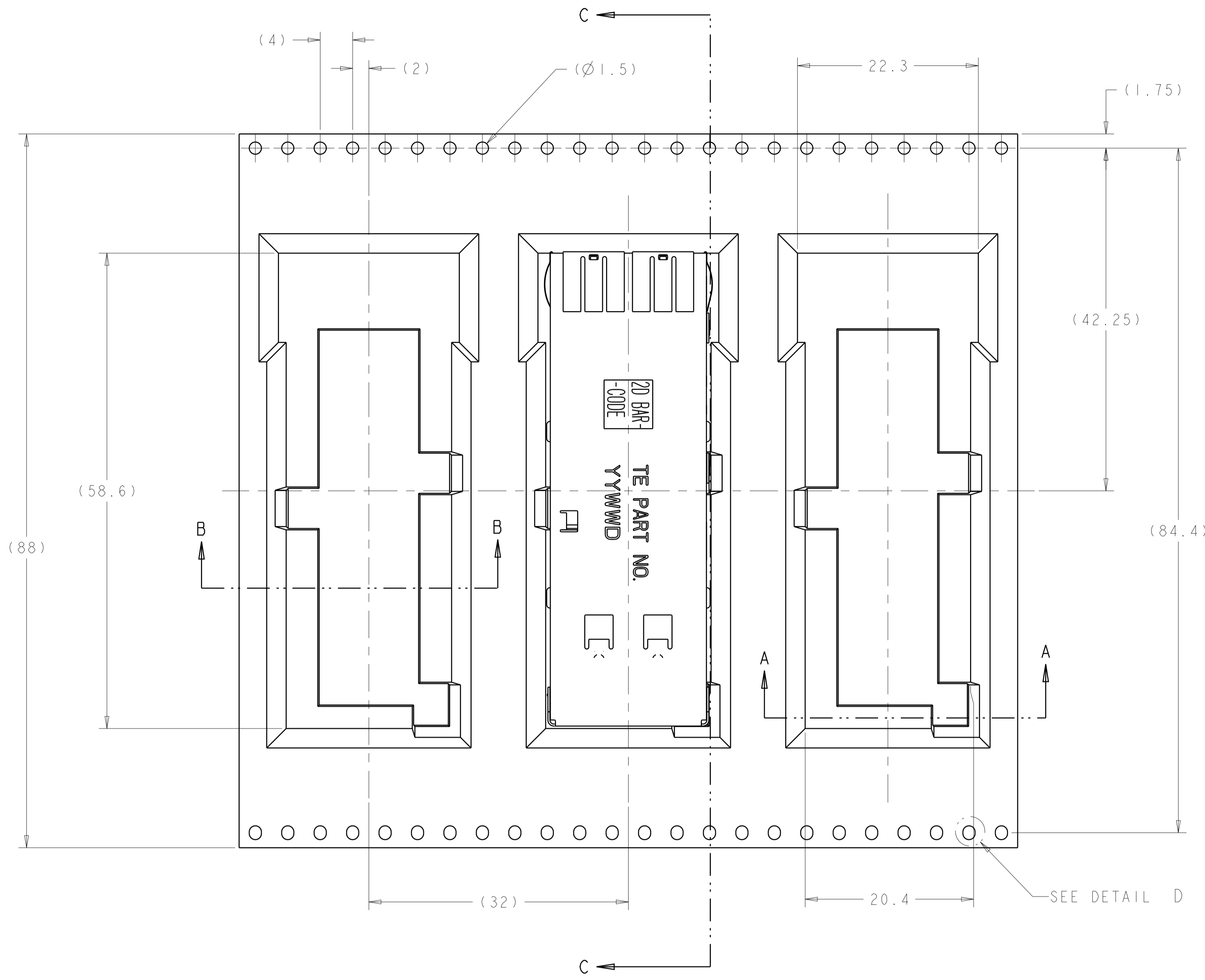
LOC	DIST	REVISIONS			
P	LTN	DESCRIPTION	DATE	DWN	APVD
GP	00	SEE SHEET 1	-	-	-



REEL PACKAGING  
 180 PCS PER REEL  
 SCALE APPROXIMATE  
 SCALE 3:5

<small>THIS DRAWING IS UNPUBLISHED. RELEASED FOR PUBLICATION. IT IS THE POLICY OF TYCO ELECTRONICS CORPORATION TO CONTROL THE DISTRIBUTION OF THIS DRAWING. CONTACT YOUR LOCAL SALES OFFICE FOR THE LATEST REVISION.</small>		DWN: Z.M. BEAM 22SEP2009 CHK: J.R. PETERSON 22SEP2009 APVD: B.H. WERTZ 22SEP2009	Tyco Electronics Harrisburg, PA 17105-3608
DIMENSIONS: mm 	TOLERANCES UNLESS OTHERWISE SPECIFIED: 0 PLC ±0.1 1 PLC ±0.1 2 PLC ±0.1 3 PLC ± 4 PLC ± ANGLES ± FINISH	NAME: OSFP PRODUCT SPEC: 108-2286 APPLICATION SPEC: 114-13217 WEIGHT: - CUSTOMER DRAWING	SIZE: A CAGE CODE: 00779 DRAWING NO: C=2110487 RESTRICTED TO: - SCALE: 5:1 SHEET: 4 OF 5 REV: 5

LOC	DIST	REVISIONS					
GP	00	P	LTN	DESCRIPTION	DATE	DWN	APVD
		-		SEE SHEET 1			



THIS PRINT IS  
**PRELIMINARY**  
 UNQUALIFIED PRODUCT  
 CONTACT PRODUCT ENGINEERING  
 BEFORE USING THIS PRINT

PACKAGING TAPE LAYOUT  
 SCALE APPROXIMATE

DIMENSIONS: mm 		TOLERANCES UNLESS OTHERWISE SPECIFIED: 0 PLC ±0.1 1 PLC ±0.1 2 PLC ±0.1 3 PLC ±0.1 4 PLC ±0.1 ANGLES ±° FINISH		DWN Z.M. REAM 22SEP2009 CHK J.R. PETERSON 22SEP2009 APVD B.H. WERTZ 22SEP2009		Tyco Electronics Harrisburg, PA 17105-3608	
MATERIAL: -		PRODUCT SPEC: 108-2286 APPLICATION SPEC: 114-13217		NAME: QSFP IXI CAGE ASSEMBLY SOLDER, THRU BEZEL		SIZE: A CAGE CODE: 00779 DRAWING NO: C=2110487	
CUSTOMER DRAWING		WEIGHT: -		RESTRICTED TO: -		SCALE: 5:1 SHEET 5 OF 5 REV 5	