



Chipsmall Limited consists of a professional team with an average of over 10 year of expertise in the distribution of electronic components. Based in Hongkong, we have already established firm and mutual-benefit business relationships with customers from,Europe,America and south Asia,supplying obsolete and hard-to-find components to meet their specific needs.

With the principle of “Quality Parts,Customers Priority,Honest Operation,and Considerate Service”,our business mainly focus on the distribution of electronic components. Line cards we deal with include Microchip,ALPS,ROHM,Xilinx,Pulse,ON,Everlight and Freescale. Main products comprise IC,Modules,Potentiometer,IC Socket,Relay,Connector.Our parts cover such applications as commercial,industrial, and automotives areas.

We are looking forward to setting up business relationship with you and hope to provide you with the best service and solution. Let us make a better world for our industry!



Contact us

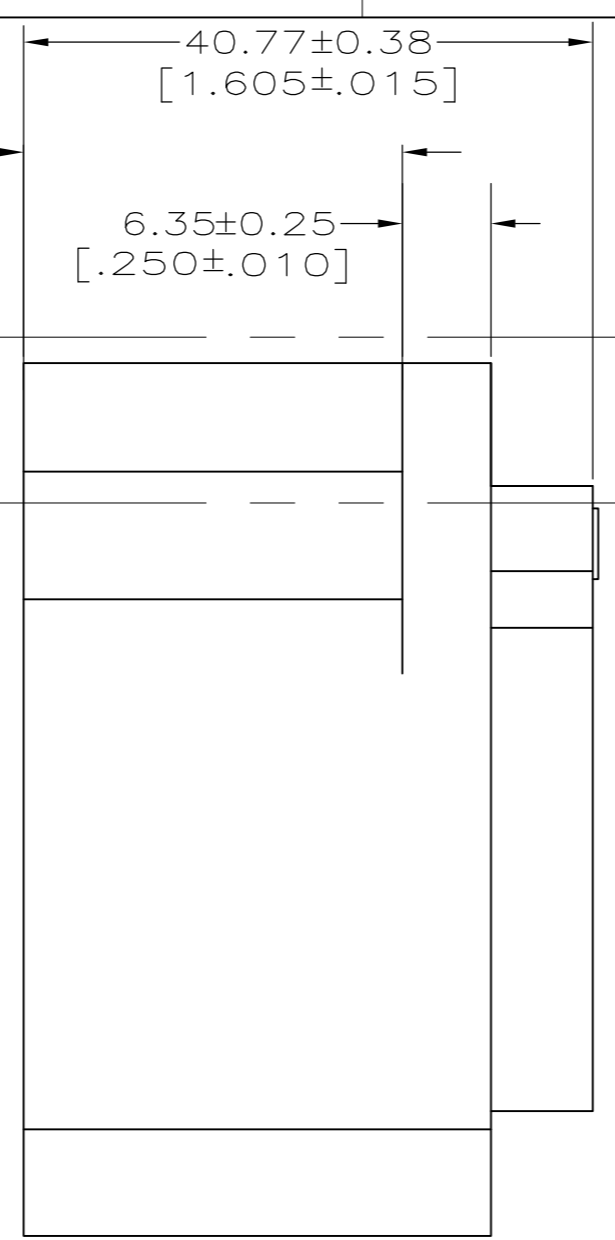
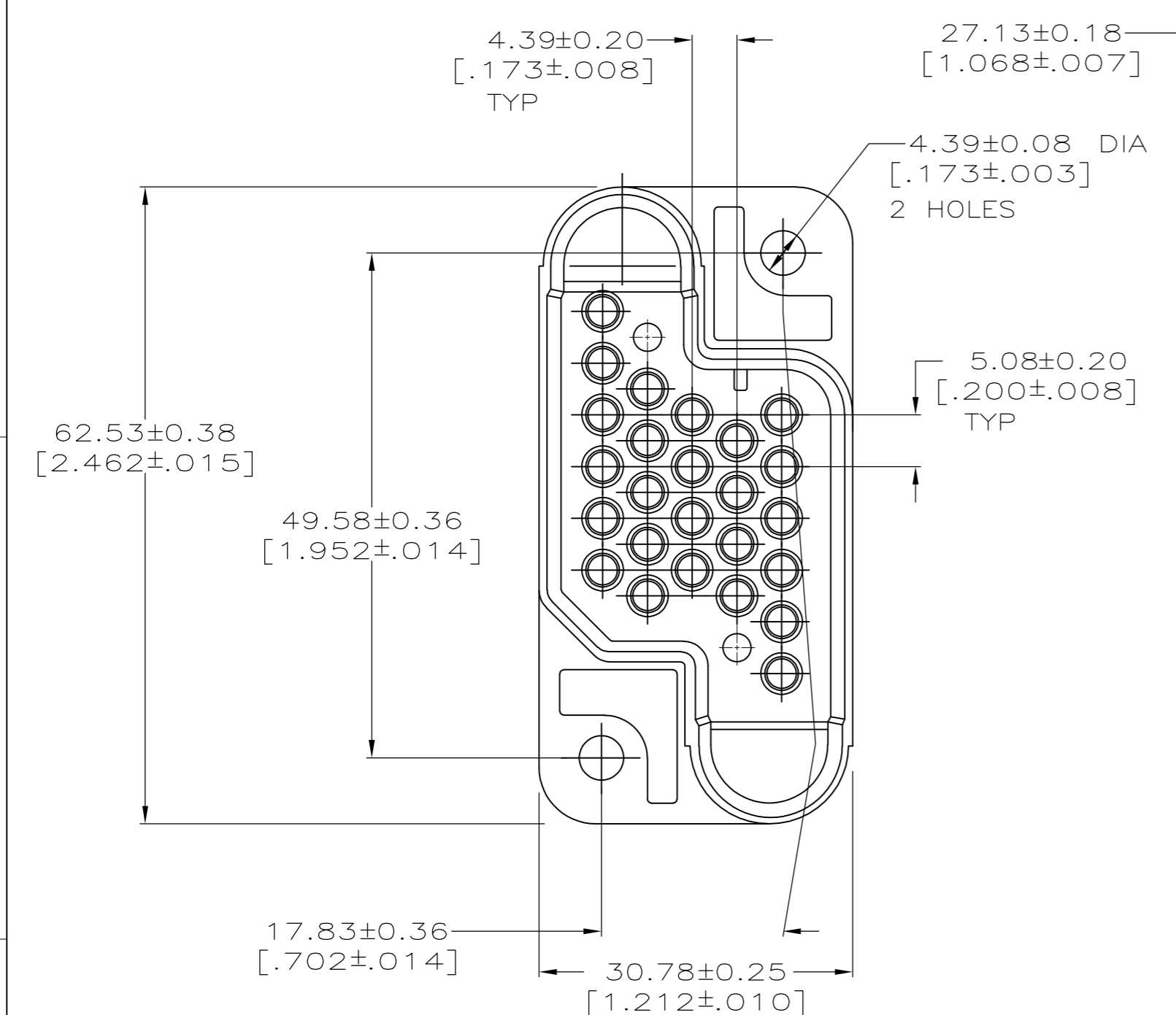
Tel: +86-755-8981 8866 Fax: +86-755-8427 6832

Email & Skype: info@chipsmall.com Web: www.chipsmall.com

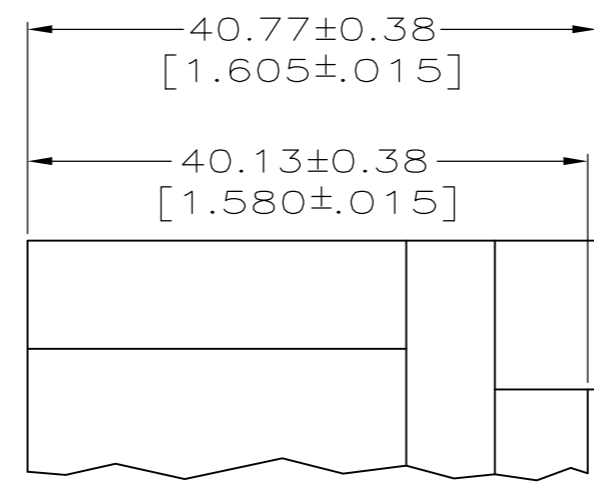
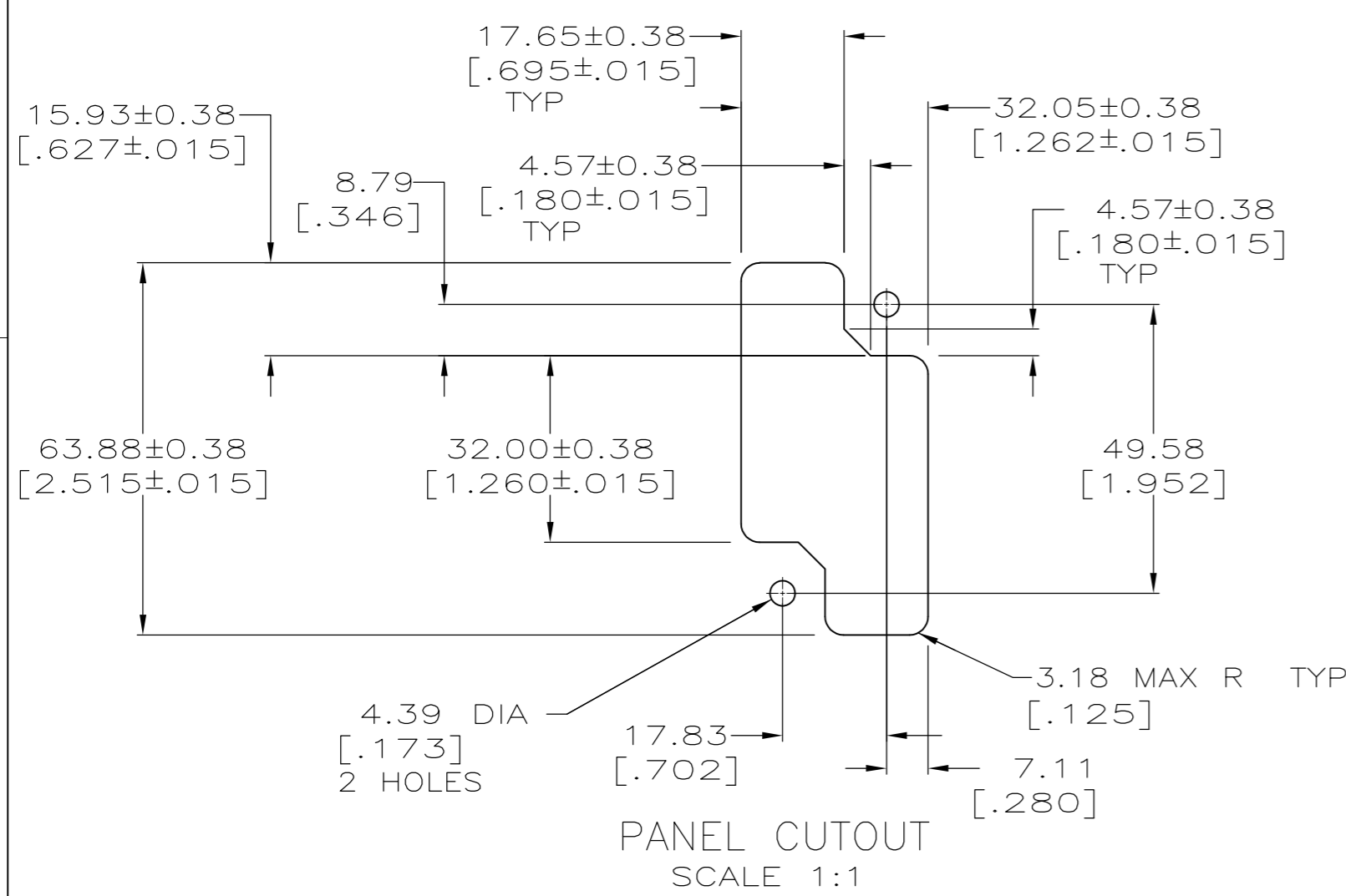
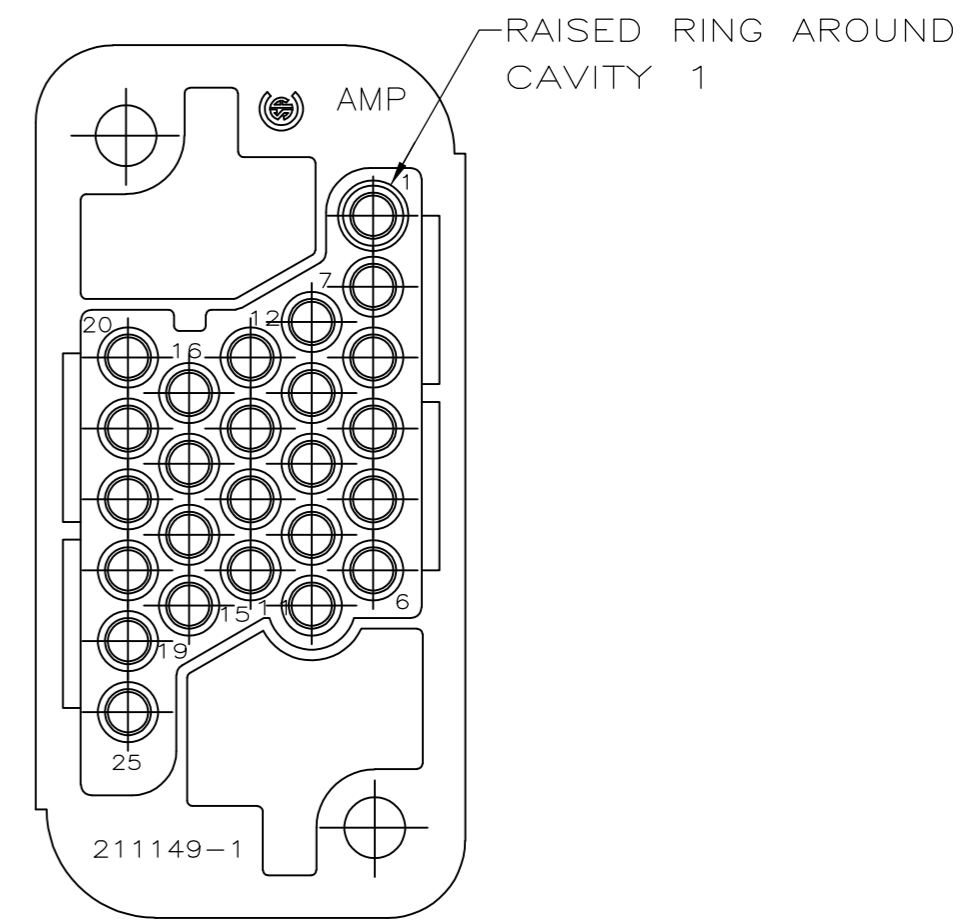
Address: A1208, Overseas Decoration Building, #122 Zhenhua RD., Futian, Shenzhen, China



LOC		DIST		REVISIONS					
BD		39		P	LTR	DESCRIPTION	DATE	OWN	APVD
				F1		REVISED PER ECO-11-004820	11MAR11	RK	HMR



1. THIS CONNECTOR MATES WITH SOCKET HOUSING 211150.
2. CAVITY 1 AND 25 SHOULD NOT BE USED WITH GROUND PIN.



DETAIL Z
 RAISED STANDOFF 2 PLACES
 211149-3 ONLY

SEE DETAIL Z	211149-3
AS SHOWN	211149-1
STANDOFF	PART NO

THIS DRAWING IS A CONTROLLED DOCUMENT.

DWN	C.OBERMAN	01/14/92	STE TE Connectivity
CHK	R.STONE	1-22-92	
APVD	A.TRAVIS	1-22-92	NAME
DIMENSIONS: mm [INCHES]			PRODUCT SPEC
TOLERANCES UNLESS OTHERWISE SPECIFIED:			APPLICATION SPEC
0 PLC	± -		SIZE
1 PLC	± -		CAGE CODE
2 PLC	± -		DRAWING NO
3 PLC	± 0.13 [.005]		RESTRICTED TO
4 PLC	± -		
ANGLES	± ± -		
MATERIAL	FINISH	WEIGHT	
POLYESTER, UL 94V-0 RATED, BLACK	-	-	A2 00779 C-211149
CUSTOMER DRAWING			SCALE 2:1 SHEET 1 OF 1 REV F1