



Chipsmall Limited consists of a professional team with an average of over 10 year of expertise in the distribution of electronic components. Based in Hongkong, we have already established firm and mutual-benefit business relationships with customers from,Europe,America and south Asia,supplying obsolete and hard-to-find components to meet their specific needs.

With the principle of “Quality Parts,Customers Priority,Honest Operation,and Considerate Service”,our business mainly focus on the distribution of electronic components. Line cards we deal with include Microchip,ALPS,ROHM,Xilinx,Pulse,ON,Everlight and Freescale. Main products comprise IC,Modules,Potentiometer,IC Socket,Relay,Connector.Our parts cover such applications as commercial,industrial, and automotives areas.

We are looking forward to setting up business relationship with you and hope to provide you with the best service and solution. Let us make a better world for our industry!



Contact us

Tel: +86-755-8981 8866 Fax: +86-755-8427 6832

Email & Skype: info@chipsmall.com Web: www.chipsmall.com

Address: A1208, Overseas Decoration Building, #122 Zhenhua RD., Futian, Shenzhen, China



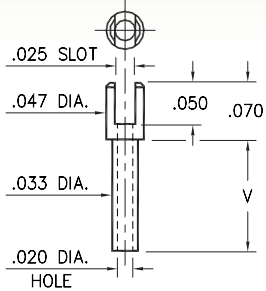
MALE PCB PINS

SOLDER TERMINALS SLOTTED

2104

2104-X-01-XX-00-00-07-0

Swage mount in .036 hole

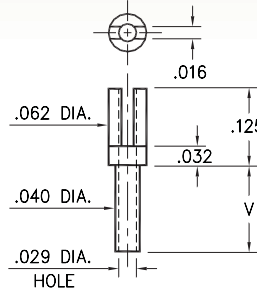


Basic Part Number	Board Thickness	Length V
2104-1	.031	.055
2104-2	.062	.086
2104-3	.094	.117
2104-4	.125	.148

2112

2112-X-01-XX-00-00-07-0

Swage mount in .043 hole

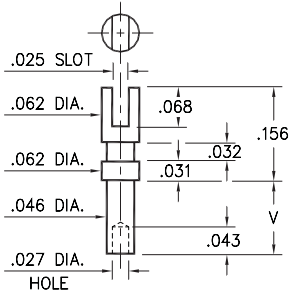


Basic Part Number	Board Thickness	Length V
2112-5	.016	.037
2112-1	.031	.053
2112-2	.062	.084
2112-3	.094	.115
2112-4	.125	.147

2105

2105-X-01-XX-00-00-07-0

Swage mount in .052 hole

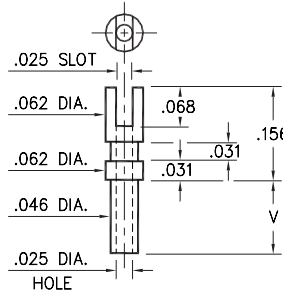


Basic Part Number	Board Thickness	Length V
2105-1	.031	.055
2105-2	.062	.086
2105-3	.094	.117
2105-4	.125	.149

2103

2103-X-01-XX-00-00-07-0

Swage mount in .052 hole

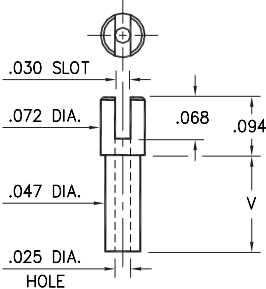


Basic Part Number	Board Thickness	Length V
2103-1	.031	.055
2103-2	.062	.086
2103-3	.094	.117
2103-4	.125	.149

2106

2106-X-01-XX-00-00-07-0

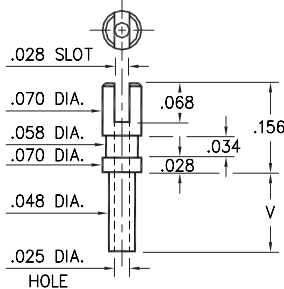
Swage mount in .052 hole



2107

2107-X-01-XX-00-00-07-0

Swage mount in .052 hole



Basic Part Number	Board Thickness	Length V
210X-1	.031	.051
210X-2	.062	.082
210X-3	.094	.113
210X-4	.125	.145

SPECIFICATIONS:

Pin Material: Brass Alloy 360, 1/2 Hard
(Swage pins are annealed)

Dimensions: Inches

Tolerances On: Lengths: ±.005
Diameters: ±.002
Angles: ±2°



ORDER CODE: XXXX - X - 01 - XX - 00 - 00 - 07 - 0

BASIC PART #

SPECIFY PIN FINISH:

- 01 200 μ" TIN/LEAD OVER NICKEL
- ◆ 80 200 μ" TIN OVER NICKEL (RoHS)
- ◆ 44 300 μ" SILVER OVER COPPER (RoHS)
- 50 300 μ" ELECTRO-SOLDER
(60/40 SnPb)

