



Chipsmall Limited consists of a professional team with an average of over 10 year of expertise in the distribution of electronic components. Based in Hongkong, we have already established firm and mutual-benefit business relationships with customers from,Europe,America and south Asia,supplying obsolete and hard-to-find components to meet their specific needs.

With the principle of “Quality Parts,Customers Priority,Honest Operation,and Considerate Service”,our business mainly focus on the distribution of electronic components. Line cards we deal with include Microchip,ALPS,ROHM,Xilinx,Pulse,ON,Everlight and Freescale. Main products comprise IC,Modules,Potentiometer,IC Socket,Relay,Connector.Our parts cover such applications as commercial,industrial, and automotives areas.

We are looking forward to setting up business relationship with you and hope to provide you with the best service and solution. Let us make a better world for our industry!



Contact us

Tel: +86-755-8981 8866 Fax: +86-755-8427 6832

Email & Skype: info@chipsmall.com Web: www.chipsmall.com

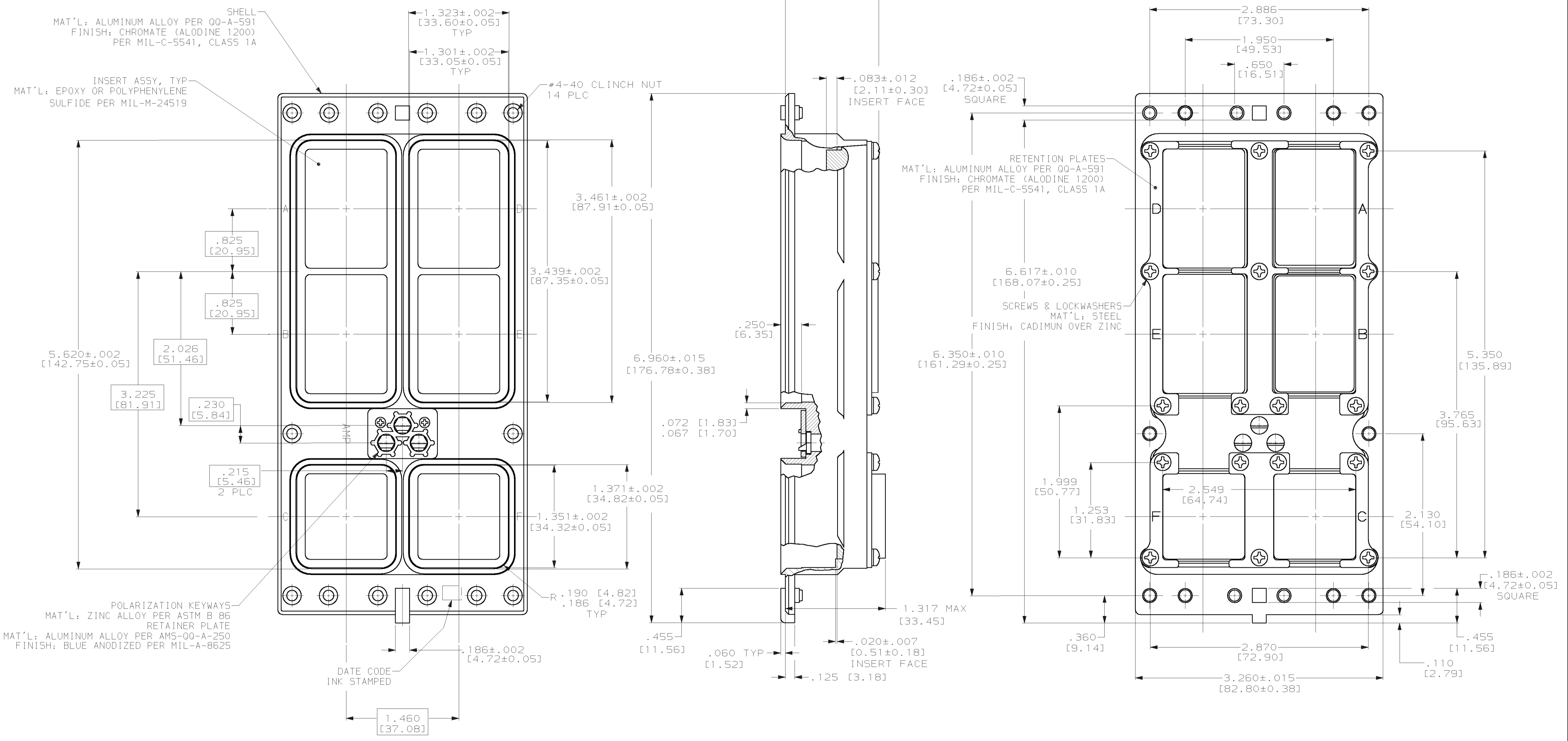
Address: A1208, Overseas Decoration Building, #122 Zhenhua RD., Futian, Shenzhen, China



REVISED		REVISIONS			
DF	AO	TR	DATE	BY	APPV
B		REV PER	063D-0041-02	3-03	JMK SG

CUSTOMER PART NO. MARKED IN THIS AREA.

AMP PART NO. MARKED IN THIS AREA.



- POLARIZING KEYS ARE ASSEMBLED IN POSITION "01".
- CONTACTS ARE NOT INCLUDED WITH THIS CONNECTOR.

7303050CN-774422-4-T		211612-1	
CUSTOMER PART NO.		PART NUMBER	
AMP		AMP Incorporated Harrisburg, PA 17105-3608	
RCPT ASSY, UNSEALED, SIZE 3, ARINC 600		DRAWING NO. C-211612	
SCALE 1.5:1		SHEET 1 OF 1	