



Chipsmall Limited consists of a professional team with an average of over 10 year of expertise in the distribution of electronic components. Based in Hongkong, we have already established firm and mutual-benefit business relationships with customers from,Europe,America and south Asia,supplying obsolete and hard-to-find components to meet their specific needs.

With the principle of “Quality Parts,Customers Priority,Honest Operation,and Considerate Service”,our business mainly focus on the distribution of electronic components. Line cards we deal with include Microchip,ALPS,ROHM,Xilinx,Pulse,ON,Everlight and Freescale. Main products comprise IC,Modules,Potentiometer,IC Socket,Relay,Connector.Our parts cover such applications as commercial,industrial, and automotives areas.

We are looking forward to setting up business relationship with you and hope to provide you with the best service and solution. Let us make a better world for our industry!



Contact us

Tel: +86-755-8981 8866 Fax: +86-755-8427 6832

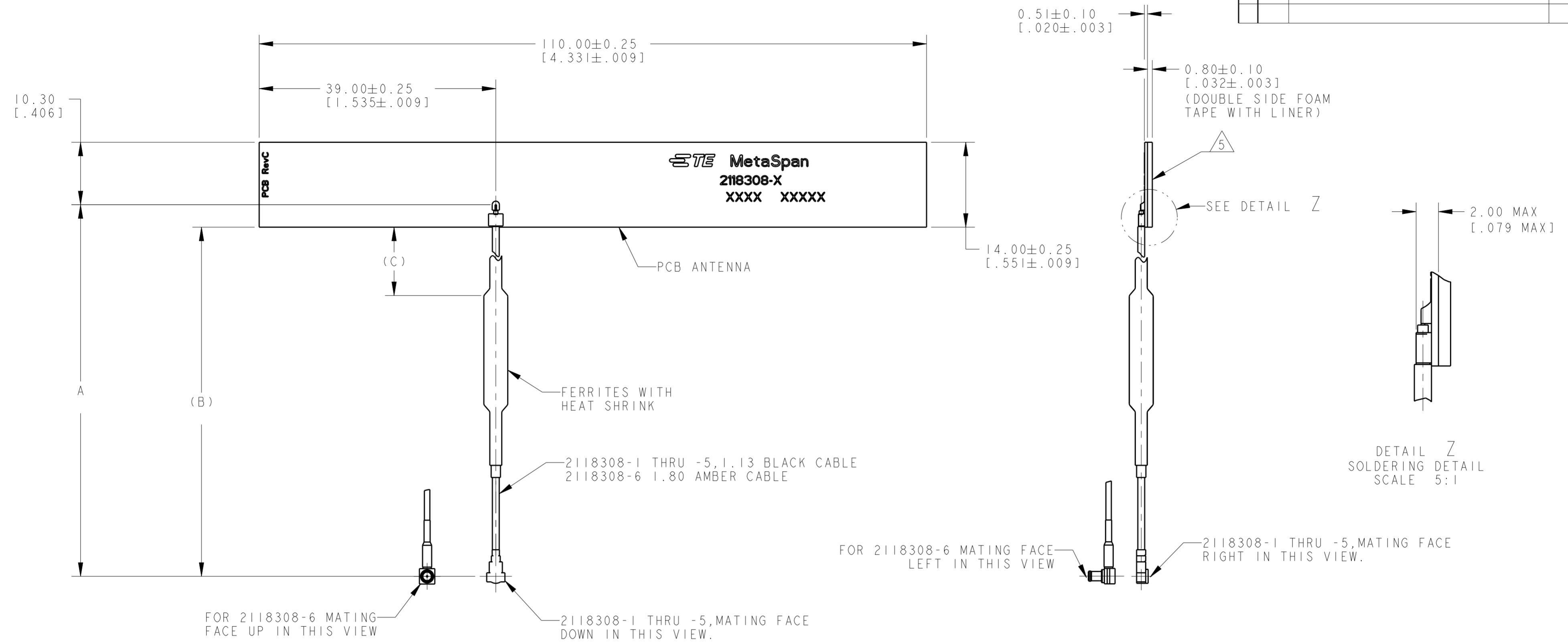
Email & Skype: info@chipsmall.com Web: www.chipsmall.com

Address: A1208, Overseas Decoration Building, #122 Zhenhua RD., Futian, Shenzhen, China



THIS DRAWING IS UNPUBLISHED. RELEASED FOR PUBLICATION 20
 © COPYRIGHT 20 BY TYCO ELECTRONICS CORPORATION ALL RIGHTS RESERVED.

LOC	DIST	REVISIONS					
		P	LTR	DESCRIPTION	DATE	DWN	APVD
00	AJ		B	REVISED PER ECO-15-012167	03AUG2015	AP	JM
			C	REVISED PER ECO-17-011737	11AUG2017	AH	AC
			D	REVISED PER ECO-18-000287	03JAN2018	CR	JLM



- PRODUCT AND PROCESSING MEETS THE REQUIREMENTS OF TE CONNECTIVITY ENVIRONMENTAL STANDARD TEC-138-702.
- MINIMUM IDENTIFICATION INCLUDES: TE LOGO, MetaSpan, TE ASSEMBLY PART NUMBER, AND FOUR DIGIT DATE CODE (FIRST 2 DIGITS FOR THE WEEK CODE AND THE 2ND TWO DIGITS FOR THE YEAR CODE). PCB REVISION AT SEPARATE LOCATION.
- MATERIALS: PCB MATERIAL TOTAL THICKNESS: 0.51 [0.020], SINGLE SIDE, 1/2 OUNCE COPPER.
- OVERPLATING: PLATING ON EXPOSED COPPER AREAS TO BE E.N.I.G. FINISH.
- REMOVE LINER FROM DOUBLE SIDED FOAM TAPE 3M VHB RP32 TO APPLY ANTENNA IN APPLICATION.
- PRODUCT PACKAGED IN A BAG.
- CUSTOMER SPECIFIC REQUIRED LABELS TO BE PLACED ON BAGS AND BOXES
- THIS PART IS SPECIAL PACKAGED AND IS NOT FOR GENERAL SALES. USE "-3" VERSION FOR GENERAL SALES.

7	8	MHF	0.70	146.30 (5.759)	150.00 (5.905)	2118308-7
		MCX RA PLUG	0.40	190.0(7.48)	193.7(7.626)	2118308-6
		MHF	0.70	200.0(7.874)	203.7(8.02)	2118308-5
		MHF	0.70	496.30(19.539)	500.00(19.685)	2118308-4
		MHF	0.70	146.30(5.759)	150.00(5.905)	2118308-3
		MHF4L	0.70	116.30(4.579)	120.00(4.724)	2118308-2
		MHF	0.70	116.30(4.579)	120.00(4.724)	2118308-1
(CONNECTOR TYPE)		C REF	B REF		A ±5.00 (±.196)	PART NUMBER

THIS DRAWING IS A CONTROLLED DOCUMENT.

DWN	K. FOLTZ	01MAR2013
CHK	G. GRIFFITH	04MAR2013
APVD	G. GRIFFITH	04MAR2013

TE Connectivity

4 G WORLD BAND MetaSpan
CABLED PCB GP INDEPENDENT

SIZE: A2 CAGE CODE: 00779 DRAWING NO: C-2118308

CUSTOMER DRAWING SCALE: SHEET OF REV D