



Chipsmall Limited consists of a professional team with an average of over 10 year of expertise in the distribution of electronic components. Based in Hongkong, we have already established firm and mutual-benefit business relationships with customers from,Europe,America and south Asia,supplying obsolete and hard-to-find components to meet their specific needs.

With the principle of “Quality Parts,Customers Priority,Honest Operation,and Considerate Service”,our business mainly focus on the distribution of electronic components. Line cards we deal with include Microchip,ALPS,ROHM,Xilinx,Pulse,ON,Everlight and Freescale. Main products comprise IC,Modules,Potentiometer,IC Socket,Relay,Connector.Our parts cover such applications as commercial,industrial, and automotives areas.

We are looking forward to setting up business relationship with you and hope to provide you with the best service and solution. Let us make a better world for our industry!



Contact us

Tel: +86-755-8981 8866 Fax: +86-755-8427 6832

Email & Skype: info@chipsmall.com Web: www.chipsmall.com

Address: A1208, Overseas Decoration Building, #122 Zhenhua RD., Futian, Shenzhen, China



THIS DRAWING IS UNPUBLISHED
 VERTRÄULICHE UNVERÖFFENTLICHTE ZEICHNUNG
 © COPYRIGHT 2016 BY TE Connectivity Germany GmbH

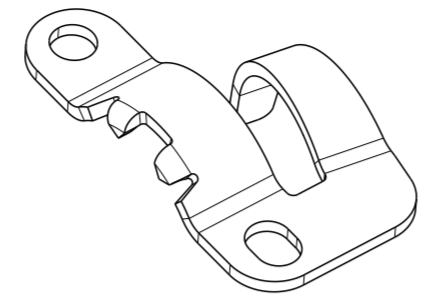
RELEASED FOR PUBLICATION
 FREI FUER VERÖFFENTLICHUNG
 ALL RIGHTS RESERVED.
 ALLE RECHTE VORBEHALTEN.

MATED WITH:
 PASSEND ZU:

PROJEKT NR.:

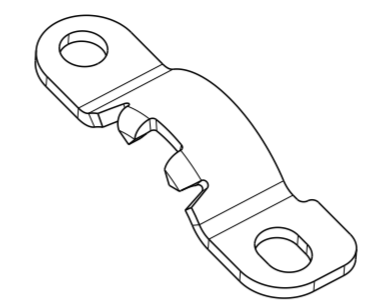
REVISIONS

P	LTR	DESCRIPTION BESCHREIBUNG	DATE	DWN	APVD
B1		NEW DRAWING	18MAY2016	ER	DO
B2		-1 REPLACED BY -3 (PCN E-16-010809)	27JUL2016	ER	DO



SCALE 2:1

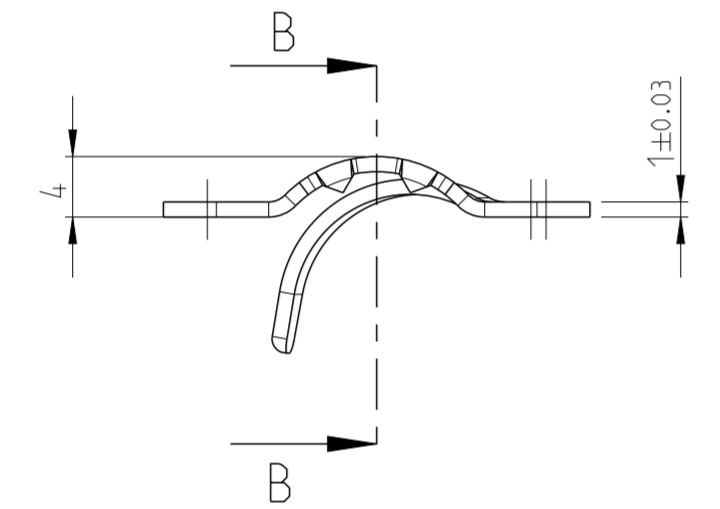
PART NUMBER
2120338-3



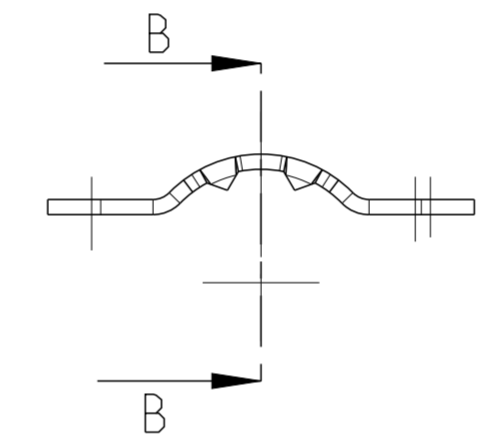
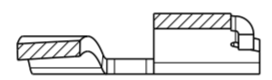
SCALE 2:1

PART NUMBER
2120338-2

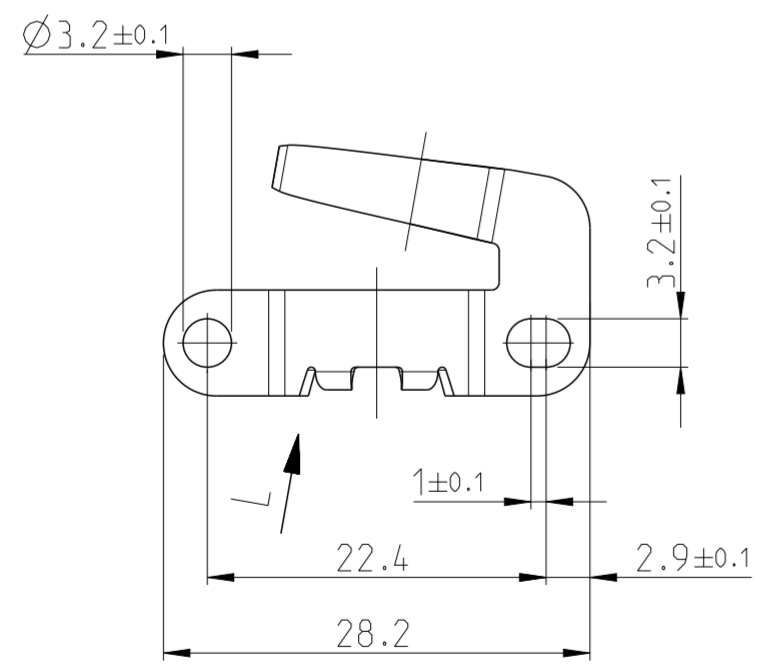
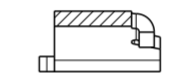
MISSING DIMENSIONS SEE PN 2120338-1
 FEHLENDE MASSE SIEHE PN 2120338-1



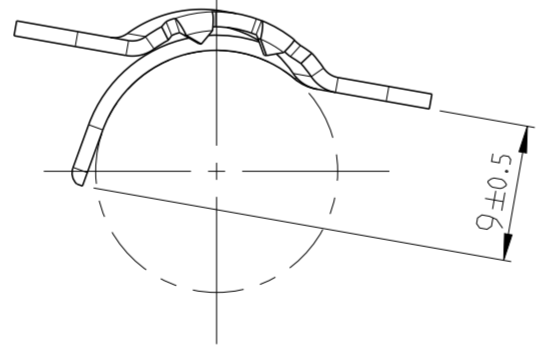
SECTION B-B
 SCHNITT



SECTION B-B
 SCHNITT



VIEW L
 ANSICHT



- 1 PACKAGING: BULK PACKING IN CORRUGATED BOX
- 1 VEPACKUNG: SCHUETTGUT IM VERSANDKARTON

1.56	PRE-TINNED VORVERZINNT	CuSn4	SCREEN CLAMP SCHIRMKLEMME	2120338-2
2.63	PRE-TINNED VORVERZINNT	CuSn4	SCREEN CLAMP SCHIRMKLEMME	2120338-3
WEIGHT GEWICHT (g)	SURFACE OBERFLÄCHE	MATERIAL	DESCRIPTION BENENNUNG	TE PART-NO. TEILE-Nr.

DIESE ZEICHNUNG IST EIN KONTROLLIERTES DOKUMENT. BEMASSUNGEN UND TOLERANZEN GEMAESS GPS (ISO STANDARDS).		DWN E. REISS 18MAY2016
THIS DRAWING IS A CONTROLLED DOCUMENT. DIMENSIONING AND TOLERANCING PER GPS (ISO STANDARDS).		CHK D. ONDRE J 18MAY2016
DIMENSIONS: MASSE IN HEITEN: (mm)		APVD D. ONDRE J 18MAY2016
TOLERANCES UNLESS OTHERWISE SPECIFIED: ALLGEMEINTOLERANZEN		NAME GLAND PLATE KABELSCHELLE
0 PLC ±0.2	1 PLC ±0.2	SIZE A2
2 PLC ±0.2	3 PLC ±	CAGE CODE 00779
4 PLC ±	ANGLE S/WINKEL ±5°	DRAWING NO ZEICHNUNGS-NR. C-2120338
MATERIAL	FINISH/OBERFLÄCHE/FARBE	RESTRICTED TO NUR FUER
-	-	SCALE MASSSTAB 2:1
-	-	SHEET BLATT 1 OF 1
CUSTOMER DRAWING		REV B2

TOLERANCING ISO 8015
 GEOMETRIC TOLERANCING ISO 1101
 SIZE ISO 14405
 GENERAL TOLERANCES ISO 2768-K

