



Chipsmall Limited consists of a professional team with an average of over 10 year of expertise in the distribution of electronic components. Based in Hongkong, we have already established firm and mutual-benefit business relationships with customers from,Europe,America and south Asia,supplying obsolete and hard-to-find components to meet their specific needs.

With the principle of “Quality Parts,Customers Priority,Honest Operation,and Considerate Service”,our business mainly focus on the distribution of electronic components. Line cards we deal with include Microchip,ALPS,ROHM,Xilinx,Pulse,ON,Everlight and Freescale. Main products comprise IC,Modules,Potentiometer,IC Socket,Relay,Connector.Our parts cover such applications as commercial,industrial, and automotives areas.

We are looking forward to setting up business relationship with you and hope to provide you with the best service and solution. Let us make a better world for our industry!



## Contact us

Tel: +86-755-8981 8866 Fax: +86-755-8427 6832

Email & Skype: info@chipsmall.com Web: www.chipsmall.com

Address: A1208, Overseas Decoration Building, #122 Zhenhua RD., Futian, Shenzhen, China



4

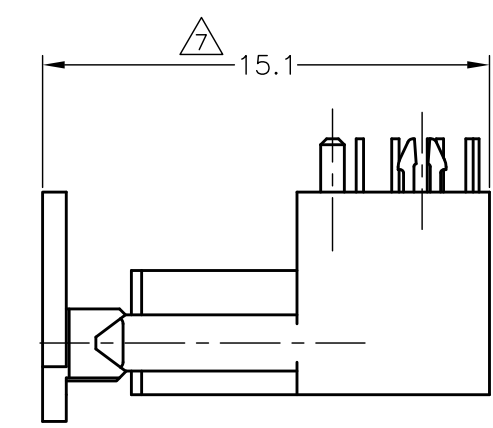
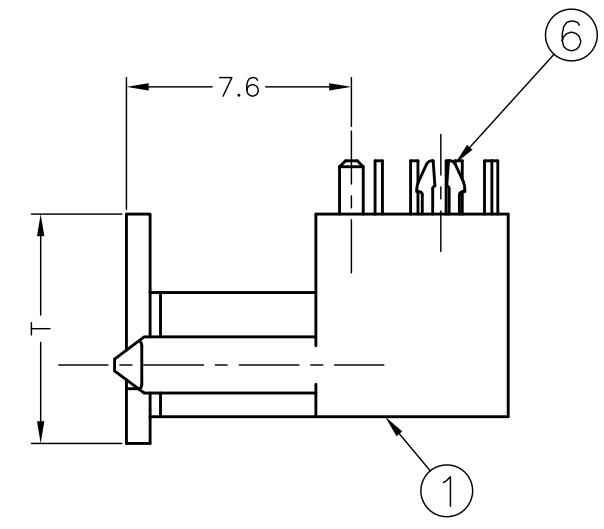
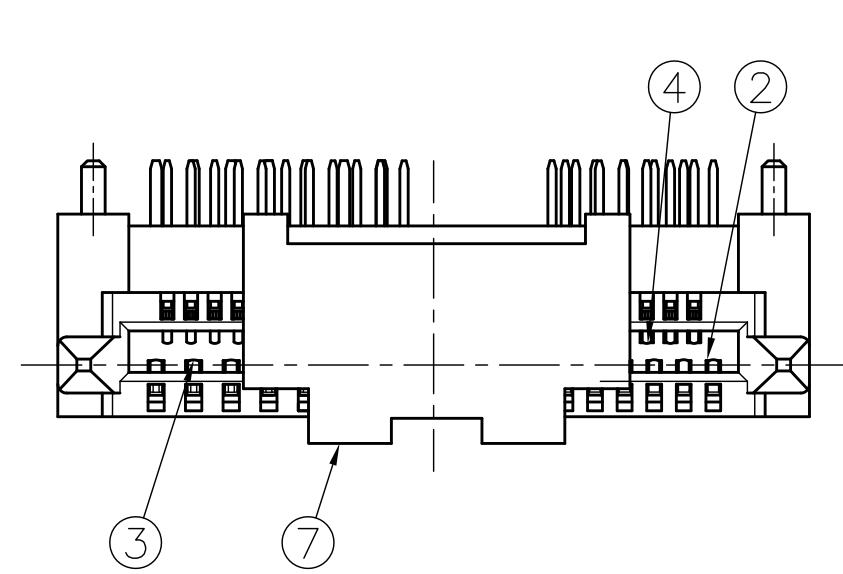
3

2

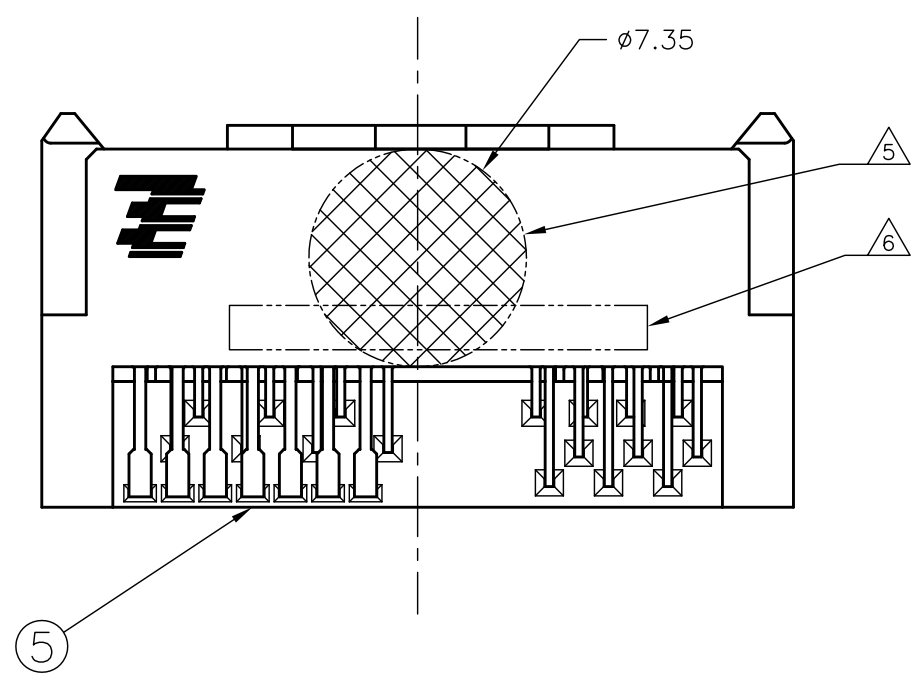
1

THIS DRAWING IS UNPUBLISHED. RELEASED FOR PUBLICATION -,- .  
 © COPYRIGHT - By - ALL RIGHTS RESERVED.

LOC	DIST	REVISIONS					
DW		P	LTR	DESCRIPTION	DATE	DWN	APVD
		C1		RELEASED	07FEB2014	W.C	V.P



X-2129116-X: AS SHOWN; W/CAP



- 1. MATERIAL;  
HOUSING: HIGH TEMPERATURE THERMO PLASTIC, UL94V-0, COLOR:BLACK  
TINE PLATE: HIGH TEMPERATURE THERMO PLASTIC, UL94V-0, COLOR:BLACK  
CONTACT:COPPER ALLOY
- 2. FINISH;  
CONTACT: ALL OVER 1.27μm MIN NICKEL UNDER PLATING.  
CONTACT AREA: AU PLATING, SEE TABLE ON SHEET 3  
TINE AREA: 2.54μm MIN MATTE TIN PLATING
- 3. PICK & PLACE VACUUM AREA
- 4. DATE CODE
- 5. CAP REMOVABLE DIMENSION.
- 6. NET WEIGHT WITH CAP : SEE TABLE AT SHEET3
- 7. NET WEIGHT WITHOUT CAP : SEE TABLE AT SHEET3
- 10. LOW HALOGEN SPECIFICATION  
CHLORINE(CI) : 900 ppm MAX.  
BROMINE(Br) : 900 ppm MAX.  
CHLORINE(CI) & BROMINE(Br) : 1500 ppm MAX.

QTY	NAME	ITEM NO.
1	CAP	7
2	SOLDER LEG	6
1	TINE PLATE	5
18	PLUS CONTACT	4
7	SIGNAL CONTACT	3
6	POWER CONTACT	2
1	HOUSING	1
PARTS LIST		

THIS DRAWING IS A CONTROLLED DOCUMENT.		DWN U.CHUANG 06AUG2010	<b>STE</b> TE Connectivity																			
DIMENSIONS: mm		CHK V.PENG 06AUG2010																				
TOLERANCES UNLESS OTHERWISE SPECIFIED:		APVD W.KODAMA 06AUG2010	NAME RECEPTACLE ASSY SLIMLINE SATA PLUS																			
<table border="1"> <tr> <td>6 PLC</td> <td>±</td> <td></td> </tr> <tr> <td>1 PLC</td> <td>±</td> <td>±0.25</td> </tr> <tr> <td>2 PLC</td> <td>±</td> <td>±3°</td> </tr> <tr> <td>3 PLC</td> <td>±</td> <td></td> </tr> <tr> <td>4 PLC</td> <td>±</td> <td></td> </tr> <tr> <td>ANGLES</td> <td>±</td> <td></td> </tr> </table>		6 PLC	±		1 PLC	±	±0.25	2 PLC	±	±3°	3 PLC	±		4 PLC	±		ANGLES	±		PRODUCT SPEC 108-99030	DRAWING NO A3 00779 C-2129116	
6 PLC	±																					
1 PLC	±	±0.25																				
2 PLC	±	±3°																				
3 PLC	±																					
4 PLC	±																					
ANGLES	±																					
MATERIAL		FINISH	APPLICATION SPEC	RESTRICTED TO																		
CUSTOMER DRAWING		WEIGHT	SCALE 4:1	SHEET 1 OF 5																		
			REV C1																			

4

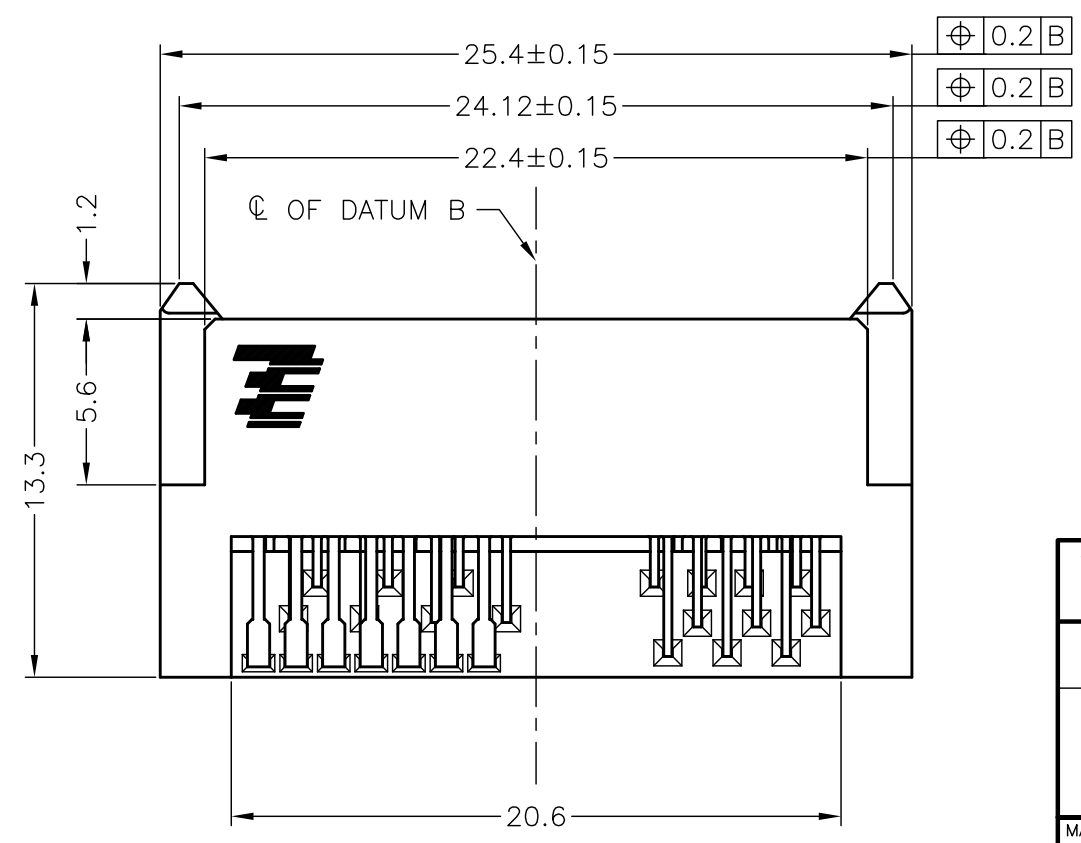
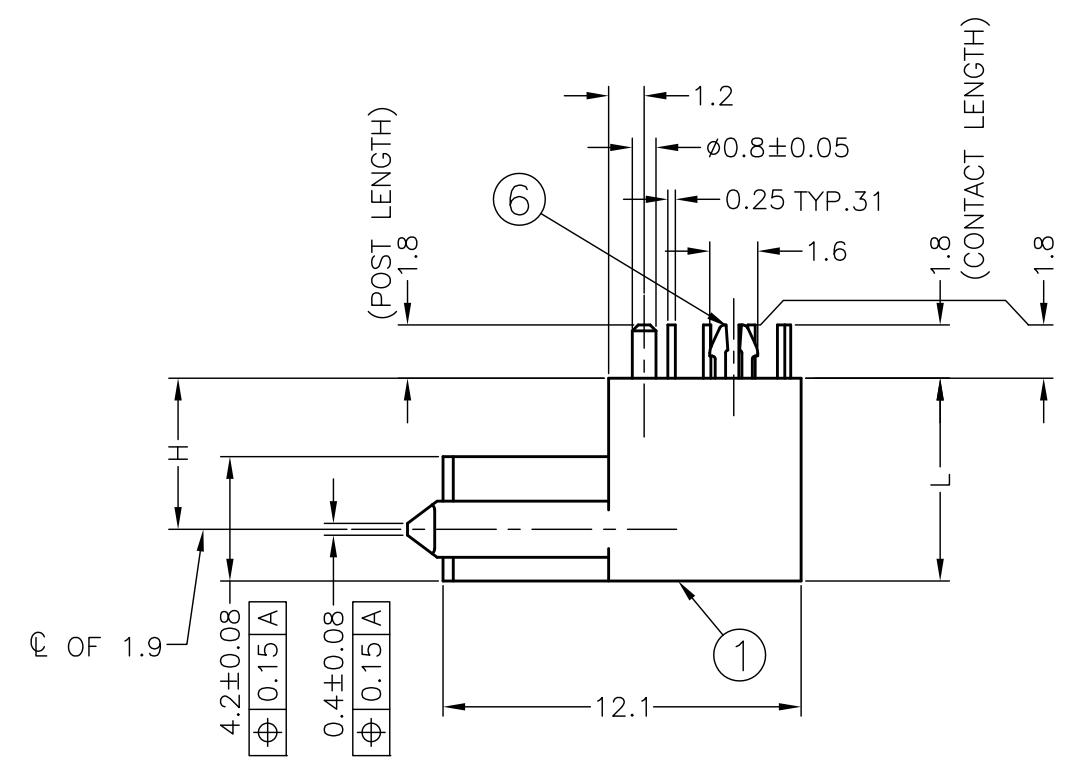
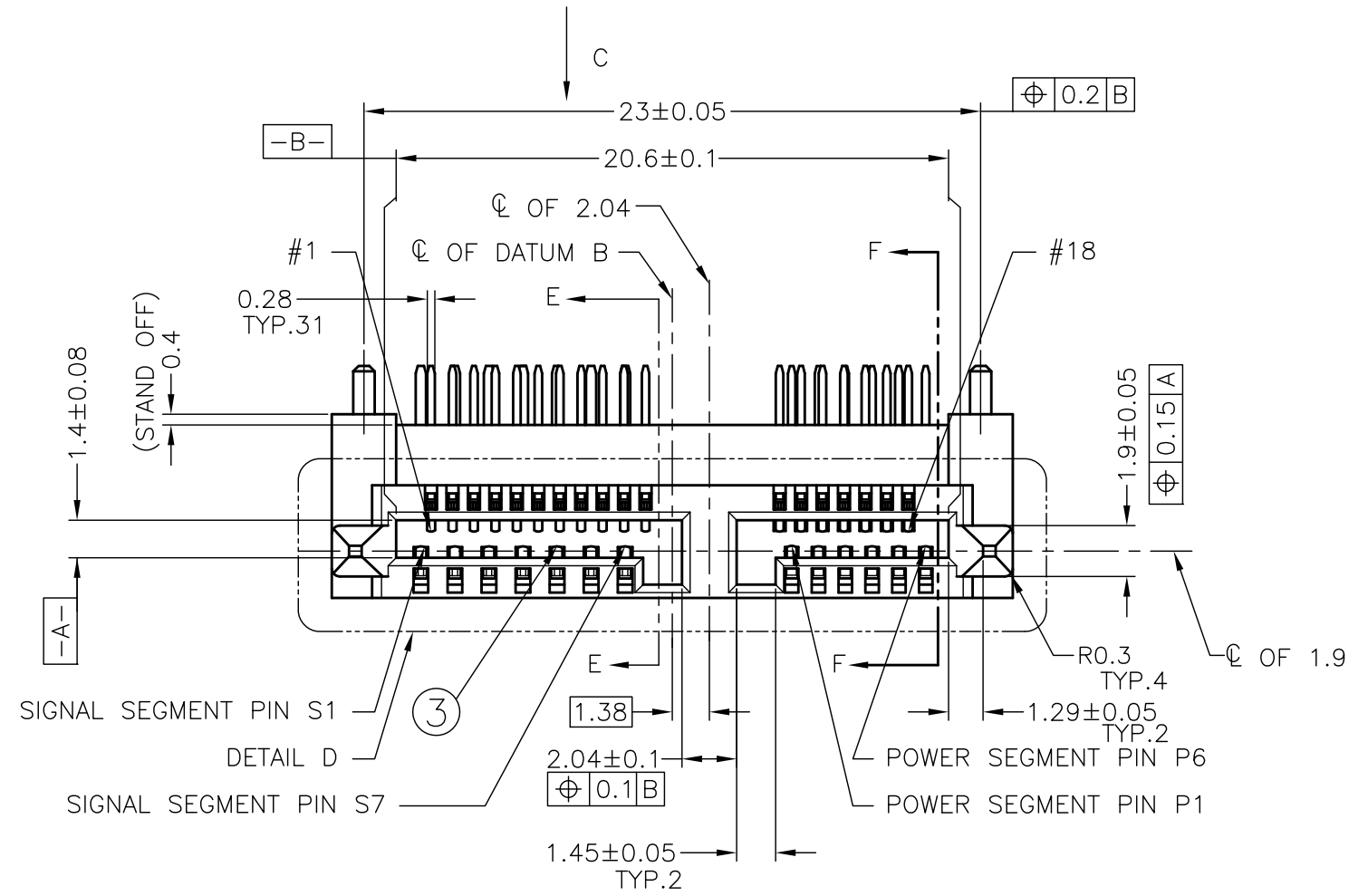
3

2

1

THIS DRAWING IS UNPUBLISHED. RELEASED FOR PUBLICATION  
 © COPYRIGHT - By - ALL RIGHTS RESERVED.

LOC	DIST	REVISIONS			
P	LTR	DESCRIPTION	DATE	DWN	APVD
-	-	SEE SHEET 1	-	-	-



X-2129116-X: AS SHOWN;W/O CAP

THIS DRAWING IS A CONTROLLED DOCUMENT.		DWN		TE Connectivity	
DIMENSIONS: mm		CHK			
TOLERANCES UNLESS OTHERWISE SPECIFIED:		APVD		NAME	
6 PLC ± 1 PLC ± ±0.25 2 PLC ± ±3° 3 PLC ± ± 4 PLC ± ± ANGLES ± ±		PRODUCT SPEC		RECEPTACLE ASSY SLIMLINE SATA PLUS	
MATERIAL		WEIGHT		SIZE CAGE CODE DRAWING NO RESTRICTED TO	
FINISH		CUSTOMER DRAWING		A3 00779 C-2129116	
		SCALE 4:1		SHEET 2 OF 5 REV C1	

4

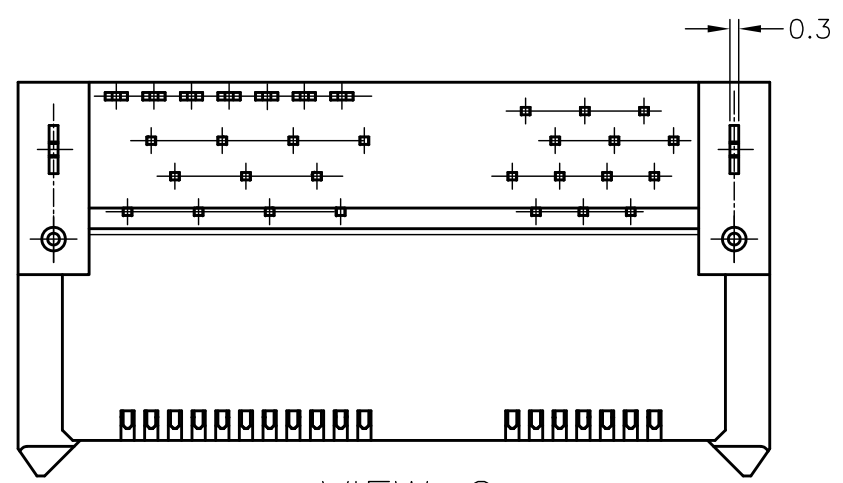
3

2

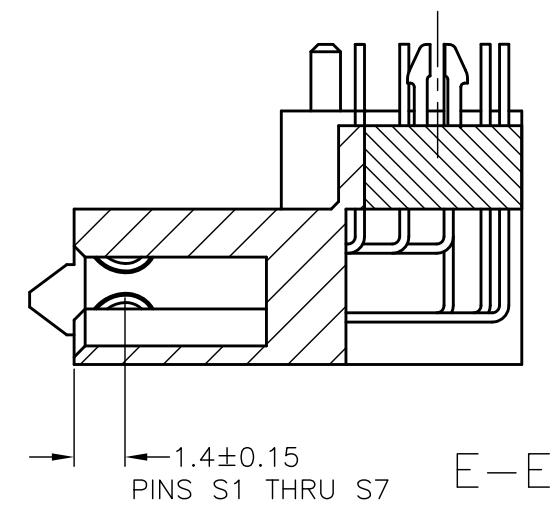
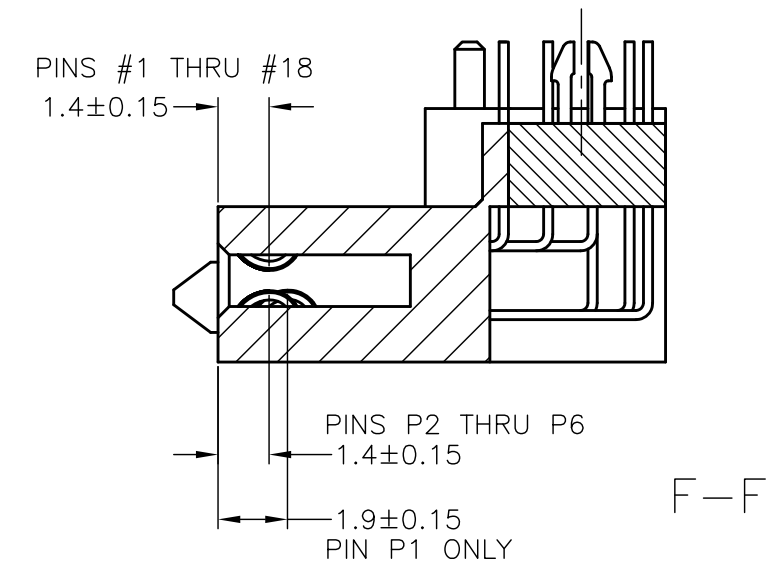
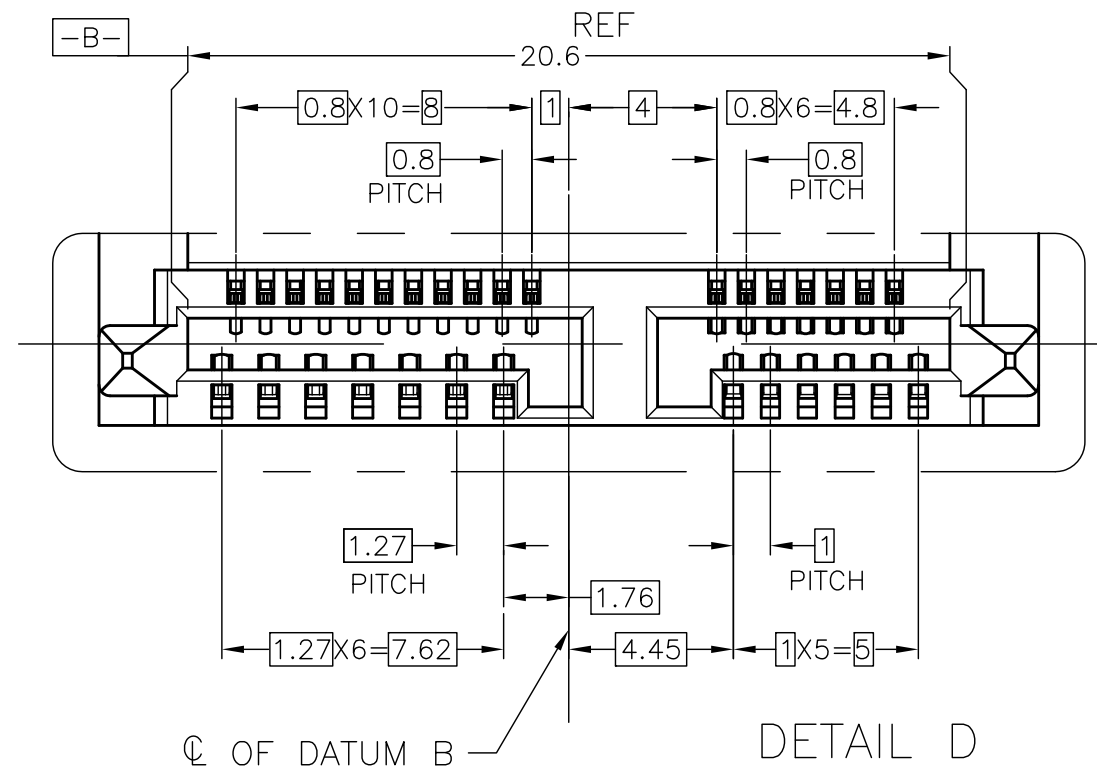
1

THIS DRAWING IS UNPUBLISHED. RELEASED FOR PUBLICATION  
 © COPYRIGHT - By - ALL RIGHTS RESERVED.

LOC	DIST	REVISIONS				
P	LTR	DESCRIPTION	DATE	DWN	APVD	
DW		SEE SHEET 1	-	-	-	



VIEW C  
SCALE 4:1



#18	HPD_PLUG DETECT		
#17	SMB_CLK		
#16	SMB_DATA		
#15	PERST#		
#14	WAKE#		
#13	CLKREQ#	P6	GND
#12	+5V	P5	GND
#11	GND	P4	MANUFACTURING DIAGNOSTIC
#10	PERX-	P3	+5V
#9	PERX+	P2	+5V
#8	GND	P1	DEVICE PRESENT
#7	GND	S7	GND
#6	PETX-	S6	B+
#5	PETX+	S5	B-
#4	GND	S4	GND
#3	REFCLK-	S3	A-
#2	REFCLK+	S2	A+
#1	GND	S1	GND
PIN	DESCRIPTION	PIN	DESCRIPTION

5.51g	5.37g	8.25	7.35	5.60	0.76µm	2-2129116-3		
						2-2129116-2		
4.68g	4.56g	6.90	6.00	4.25	0.76µm	2-2129116-1		
						1-2129116-3		
						1-2129116-2		
						1-2129116-1		
5.51g	5.37g	8.25	7.35	5.60	G/F	2129116-3		
						2129116-2		
4.68g	4.56g	6.90	6.00	4.25	G/F	2129116-1		
△9	NET WEIGHT	△8	NET WEIGHT	T	L	H	CONTACT AU PLATING	PART NUMBER

THIS DRAWING IS A CONTROLLED DOCUMENT.

DIMENSIONS: mm	TOLERANCES UNLESS OTHERWISE SPECIFIED: 6 PLC ± 1 PLC ± ±0.25 2 PLC ± ±3 3 PLC ± ± 4 PLC ± ± ANGLES ± ± FINISH	DWN CHK APVD PRODUCT SPEC APPLICATION SPEC WEIGHT CUSTOMER DRAWING	TE Connectivity NAME RECEPTACLE ASSY SLIMLINE SATA PLUS SIZE CAGE CODE DRAWING NO RESTRICTED TO A3 00779 C-2129116 SCALE 5:1 SHEET 3 OF 5 REV C1
-------------------	--	--	--

THIS DRAWING IS UNPUBLISHED.

RELEASED FOR PUBLICATION

ALL RIGHTS RESERVED.

© COPYRIGHT - By -

LOC

DIST

REVISIONS

DW

P

LTR

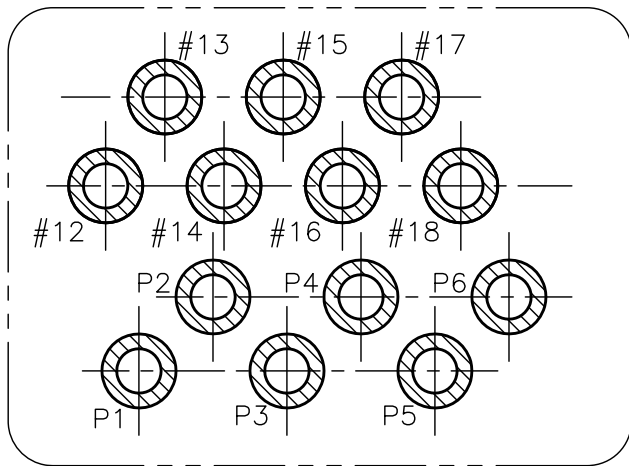
DESCRIPTION

DATE

DWN

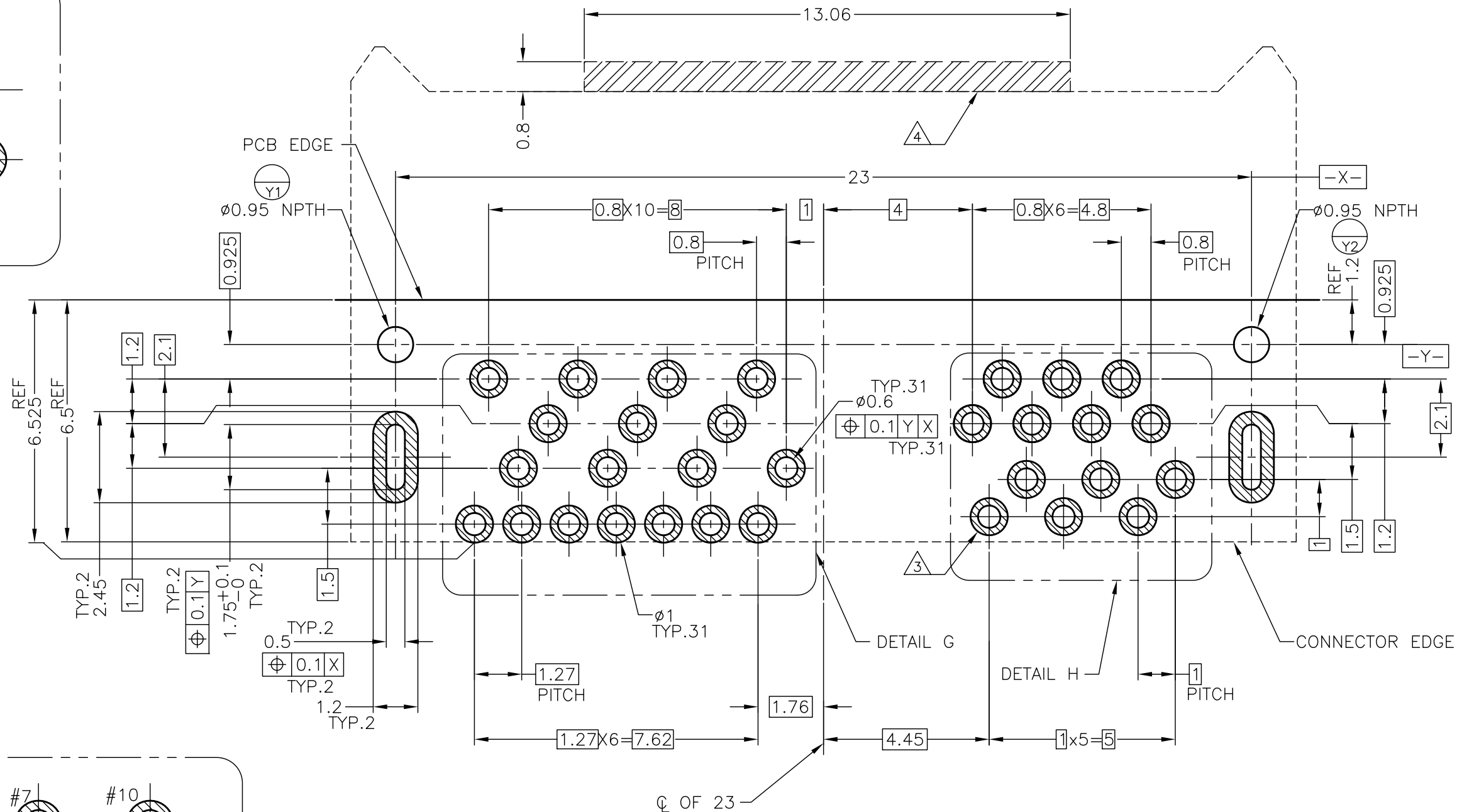
APVD

SEE SHEET 1

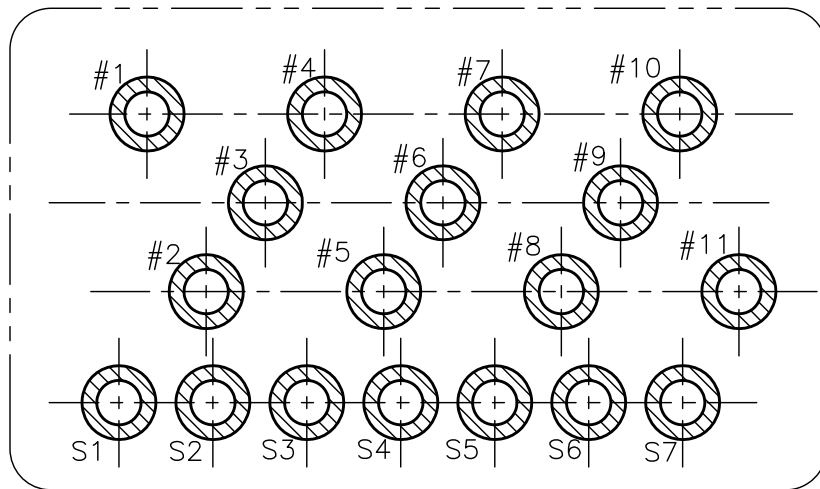


DETAIL H  
SCALE 10:1

- 3. PAD AREA
- 4. NO COMPONENT AREA



RECOMMENDED PCB LAYOUT (THICKNESS=1.45±0.1)  
MOUNTING SIDE



DETAIL G  
SCALE 10:1

THIS DRAWING IS A CONTROLLED DOCUMENT.		DWN	-	
DIMENSIONS: mm		CHK	-	
TOLERANCES UNLESS OTHERWISE SPECIFIED:		APVD	-	
<ul style="list-style-type: none"> <li>6 PLC ±</li> <li>1 PLC ± ±0.05</li> <li>2 PLC ± ±1°</li> <li>3 PLC ±</li> <li>4 PLC ±</li> <li>ANGLES ±</li> <li>FINISH ±</li> </ul>		PRODUCT SPEC	NAME	
MATERIAL		APPLICATION SPEC	RECEPTACLE ASSY SLIMLINE SATA PLUS	
FINISH		WEIGHT	SIZE	RESTRICTED TO
CUSTOMER DRAWING		A3	CAGE CODE 00779	DRAWING NO C-2129116
		CUSTOMER DRAWING	SCALE 8:1	SHEET 4 OF 5
			REV C1	

4

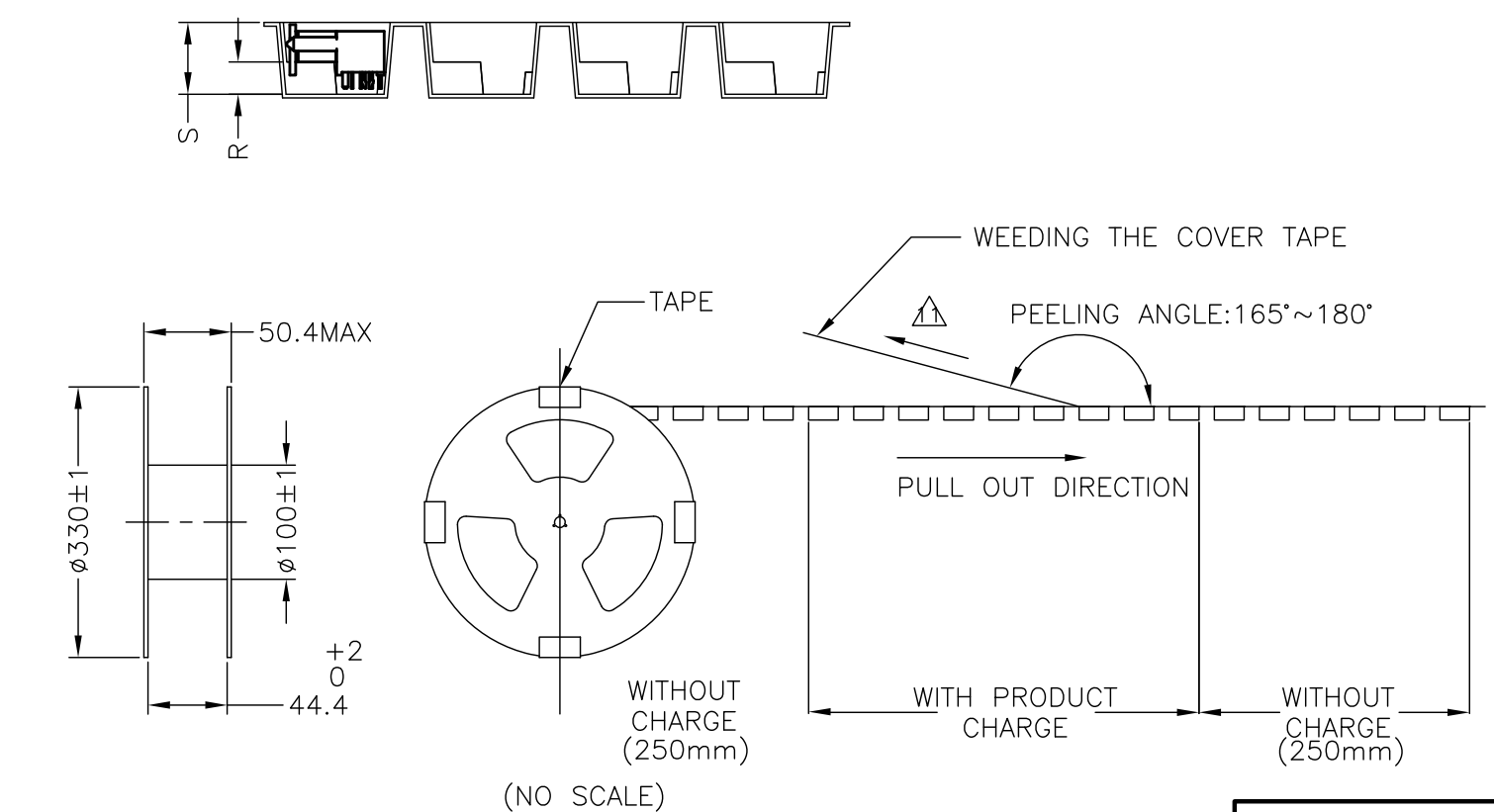
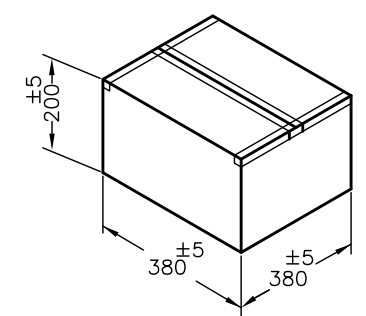
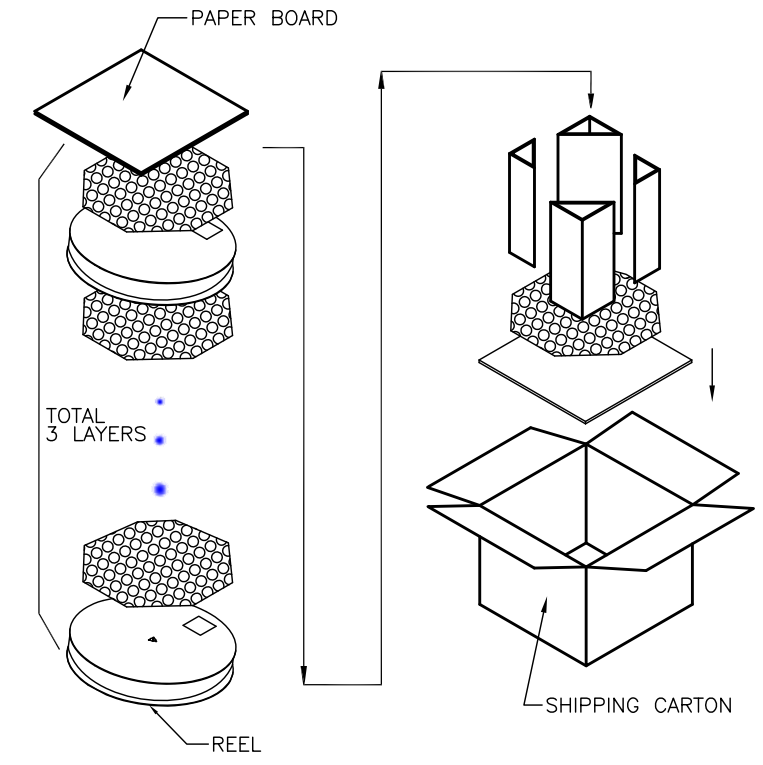
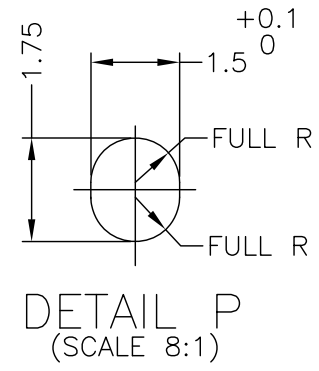
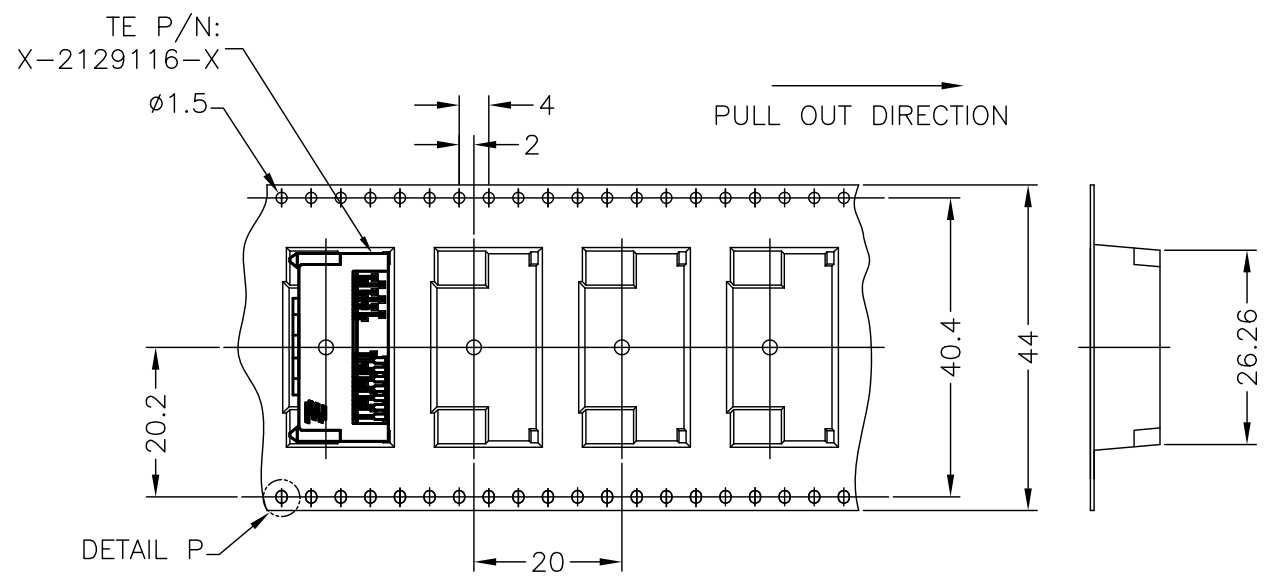
3

2

1

THIS DRAWING IS UNPUBLISHED. RELEASED FOR PUBLICATION - , - .  
 © COPYRIGHT - By - ALL RIGHTS RESERVED.

LOC	DIST	REVISIONS			
P	LTR	DESCRIPTION	DATE	DWN	APVD
DW	/	SEE SHEET 1	-	-	-



PEELING STRENGTH OF COVER TAPE: 0.2N ~ 1.2N  
 12. PACKING MATERIAL: CARRY TAPE: HIPS; COLOR: CLEAR  
 COVER TAPE: PET; COLOR: CLEAR

(NO SCALE)

THIS DRAWING IS A CONTROLLED DOCUMENT.		DWN	TE Connectivity	
DIMENSIONS: mm		CHK	NAME	
TOLERANCES UNLESS OTHERWISE SPECIFIED:		APVD	RECEPTACLE ASSY SLIMLINE SATA PLUS	
<ul style="list-style-type: none"> <li>6 PLC ±</li> <li>1 PLC ± ±0.5</li> <li>2 PLC ± ±3°</li> <li>3 PLC ±</li> <li>4 PLC ±</li> <li>ANGLES ±</li> <li>FINISH ±</li> </ul>		PRODUCT SPEC	SIZE	CAGE CODE
MATERIAL		APPLICATION SPEC	A3	00779
		WEIGHT	DRAWING NO	
		CUSTOMER DRAWING	C-2129116	
		SCALE	SHEET	REV
		FREE	5 of 5	C1

PCS/BOX	PCS/REEL	DIM R	DIM S	PART NUMBER
750	250	5.75	11.15	2-2129116-3
				2-2129116-2
900	300	4.4	9.8	2-2129116-1
750	250	5.75	11.15	2129116-3
				2129116-2
900	300	4.4	9.8	2129116-1