



Chipsmall Limited consists of a professional team with an average of over 10 year of expertise in the distribution of electronic components. Based in Hongkong, we have already established firm and mutual-benefit business relationships with customers from,Europe,America and south Asia,supplying obsolete and hard-to-find components to meet their specific needs.

With the principle of “Quality Parts,Customers Priority,Honest Operation,and Considerate Service”,our business mainly focus on the distribution of electronic components. Line cards we deal with include Microchip,ALPS,ROHM,Xilinx,Pulse,ON,Everlight and Freescale. Main products comprise IC,Modules,Potentiometer,IC Socket,Relay,Connector.Our parts cover such applications as commercial,industrial, and automotives areas.

We are looking forward to setting up business relationship with you and hope to provide you with the best service and solution. Let us make a better world for our industry!



Contact us

Tel: +86-755-8981 8866 Fax: +86-755-8427 6832

Email & Skype: info@chipsmall.com Web: www.chipsmall.com

Address: A1208, Overseas Decoration Building, #122 Zhenhua RD., Futian, Shenzhen, China



THIS DRAWING IS UNPUBLISHED. RELEASED FOR PUBLICATION
 © COPYRIGHT By - ALL RIGHTS RESERVED.

LOC		DIST		REVISIONS			
P	LTR	DESCRIPTION	DATE	DWN	APVD		
A		RELEASED	20CT2013	V.P.	D.H.		

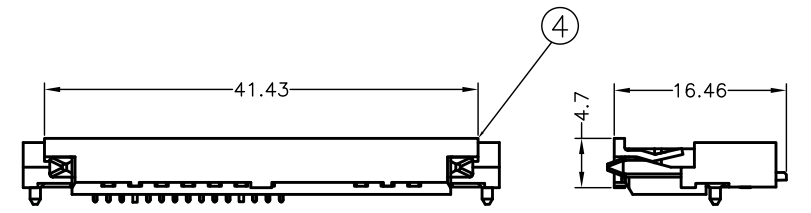
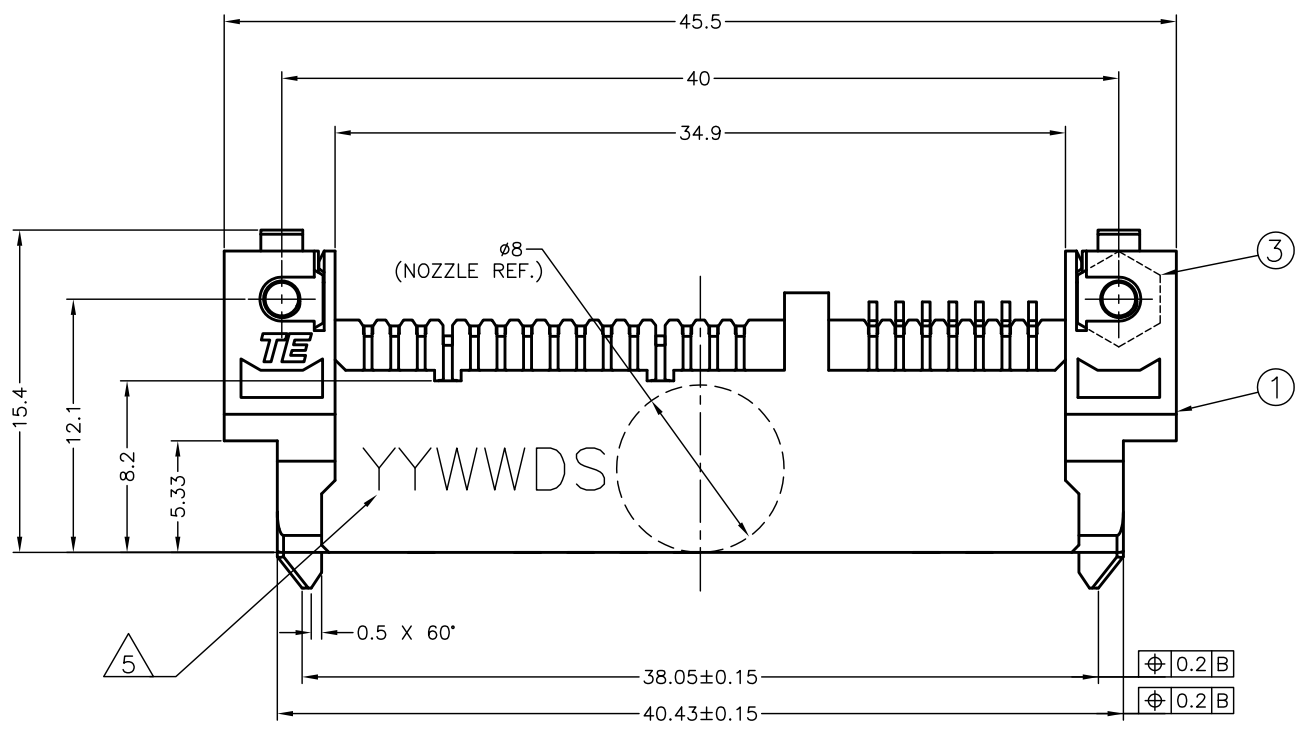
1. MATERIAL:
 HOUSING: HIGH TEMPERATURE THERMOPLASTIC
 UL94V-0, COLOR:BLACK
 CONTACT: COPPER ALLOY
 M2 NUT: COPPER ALLOY
 CAP: HIGH TEMPERATURE THERMOPLASTIC
 UL94V-0

2. FINISH:
 CONTACT: GOLD FLASH 0.13µm PLATING ON CONTACT AREA,
 MATTE-TIN PLATING 2.5µm ON SOLDER TAILS.
 NICKEL UNDER PLATING 1.3µm OVER ALL.

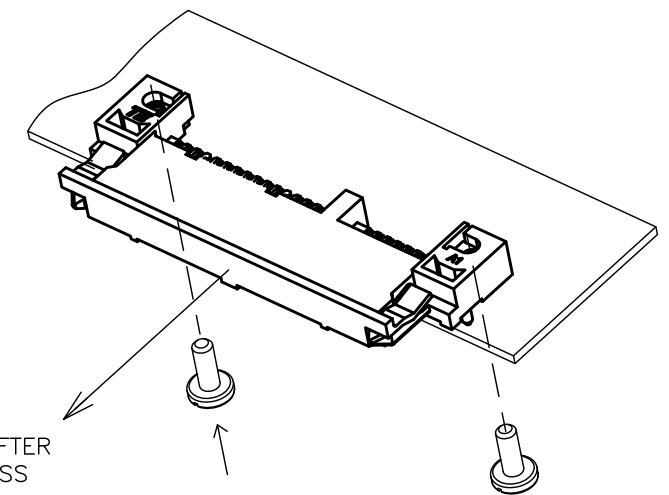
3. MEET HALOGEN FREE REQUIREMENT:
 Cl 900 ppm MAX.
 Br 900 ppm MAX.
 Cl+Br 1500 ppm MAX.
 EU ROHS-RELATED RESTRICTED SUBSTANCE SPEC IN
 HOMOGENEOUS MATERIAL REFER TO TEC-138-702
 REV.G:
 LEAD < 1000PPM
 CADMIUM < 100PPM
 MERCURY < 1000PPM
 CHROMIUM VI < 1000PPM
 PBB < 1000PPM
 PBDE < 1000PPM

4 M2 SCREW TORQUE: 2 kgf-cm
 SCREW LENGTH FOR REFERENCE

5 DATE CODE
 Y Y W W D S
 IDENTIFICATION OF SHIFT (D OR N)
 DAY OF WEEK
 WEEK OF YEAR
 THE LAST 2 DIGITS OF YEAR

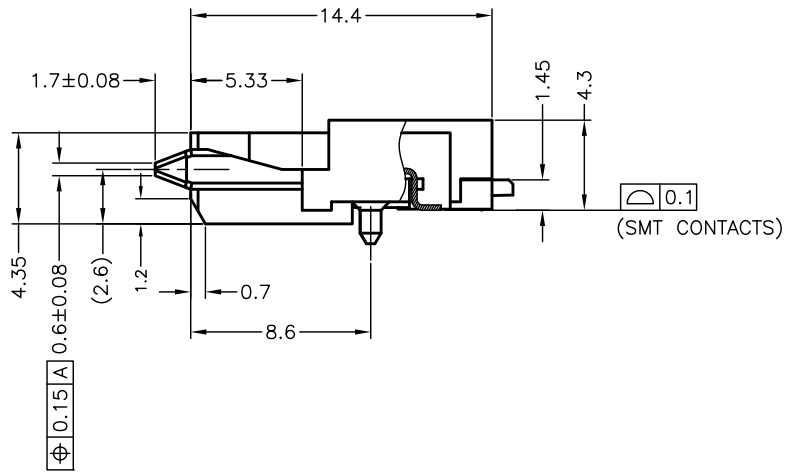
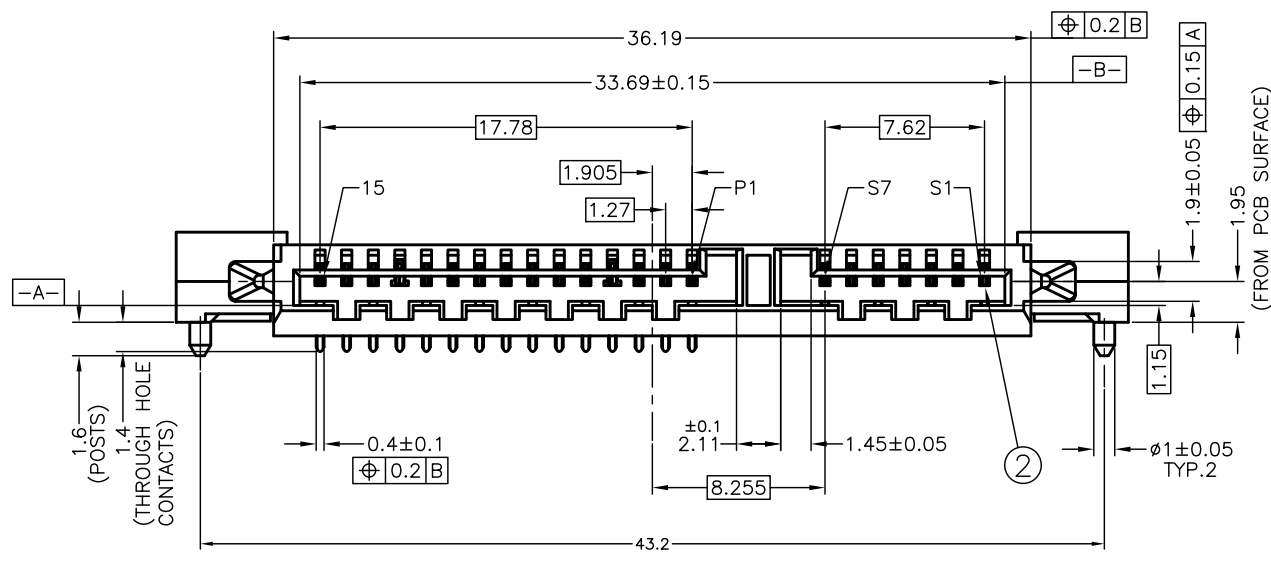
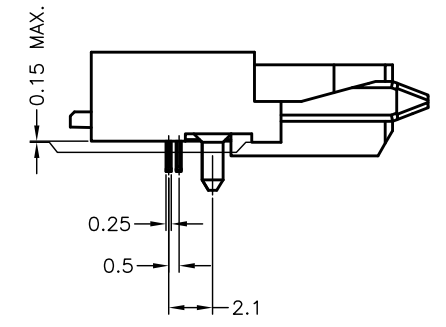


VIEW WITH CAP



REMOVE CAP AFTER
 REFLOW PROCESS

SCREW M2, 2 PCS. FROM
 BOTTOM SIDE OF P.C.B.



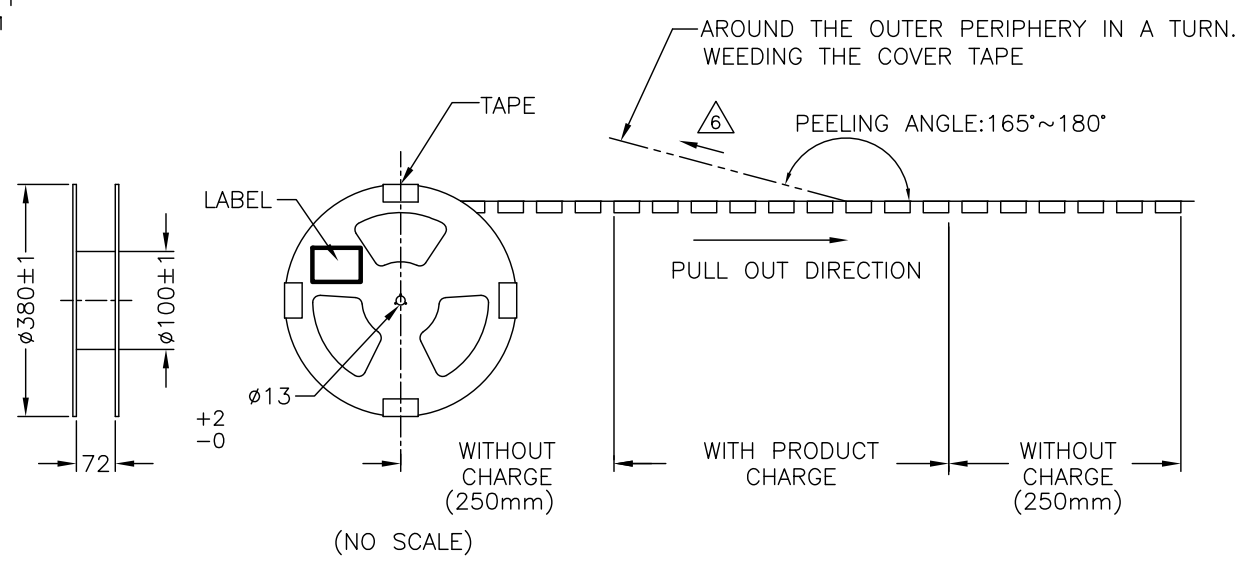
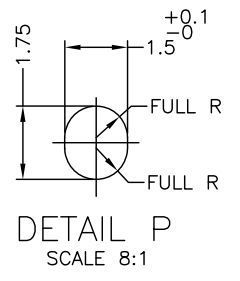
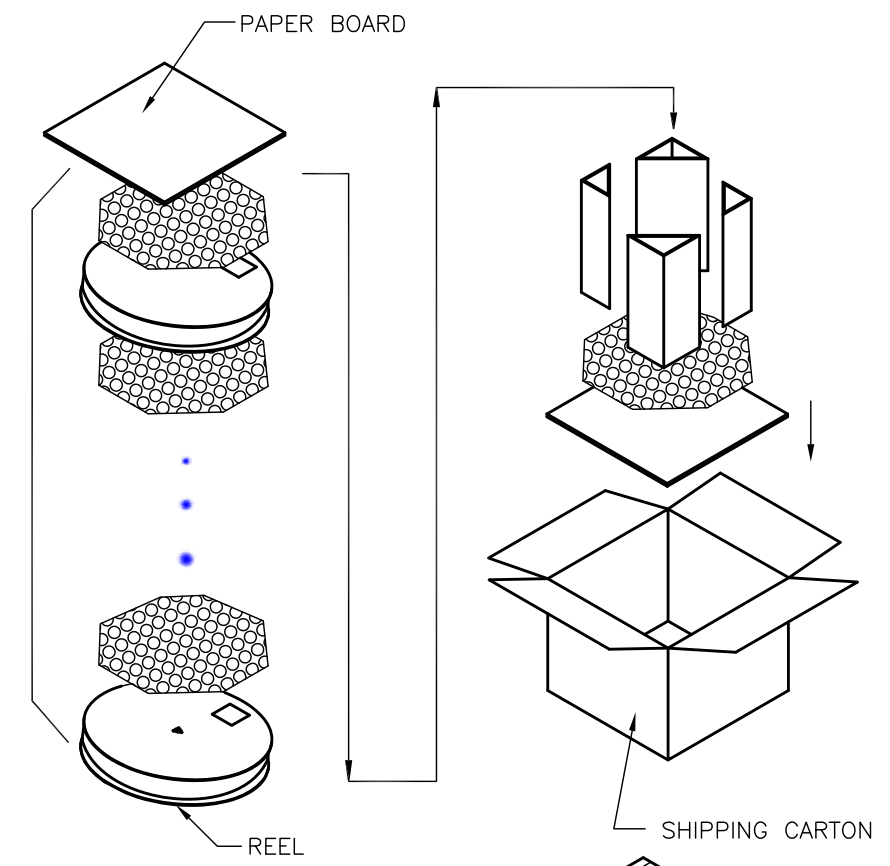
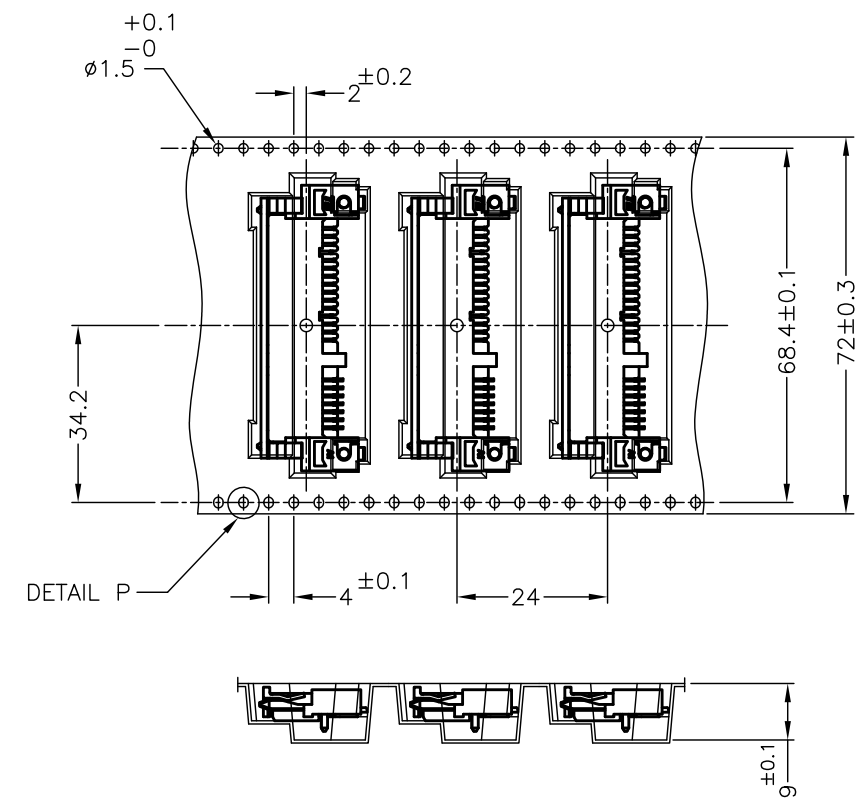
VIEW WITHOUT CAP

2129475-1
 PART NUMBER

THIS DRAWING IS A CONTROLLED DOCUMENT.		DWN V.PENG 20CT2013	TE Connectivity	
DIMENSIONS: mm		CHK V.PENG 20CT2013		
TOLERANCES UNLESS OTHERWISE SPECIFIED:		APVD D.HALBERSTADT 20CT2013	NAME SLANT INSERTION, REVERSED TYPE SATA CONNECTOR	
0 PLC ± 0.25 1 PLC ± 0.25 2 PLC ± 0.25 3 PLC ± 0.25 4 PLC ± ANGLES ± 3°		PRODUCT SPEC	SIZE CAGE CODE DRAWING NO A2 00779 C-2129475	
MATERIAL SEE NOTE		FINISH SEE NOTE	WEIGHT 2.5 GRAM	RESTRICTED TO
		CUSTOMER DRAWING	SCALE 4:1	SHEET 1 of 3 REV A

THIS DRAWING IS UNPUBLISHED. RELEASED FOR PUBLICATION
 © COPYRIGHT By - ALL RIGHTS RESERVED.

LOC		DIST		REVISIONS		
DW		P	LTR	DESCRIPTION	DATE	APVD
		-	-	SEE SHEET 1	-	-



△ PEELING STRENGTH OF COVER TAPE: 0.2N ~1.2N
 7. PACKING MATERIAL: CARRY TAPE:HIPS;COLOR:CLEAR
 COVER TAPE:PET;COLOR:CLEAR

8. QUANTITY:

	PCS/REEL	REEL/BOX	PCS/BOX
2129475-1	400	3	1200

THIS DRAWING IS A CONTROLLED DOCUMENT.		DWN	STE TE Connectivity	
DIMENSIONS: mm		CHK		
TOLERANCES UNLESS OTHERWISE SPECIFIED:		APVD	NAME	
0 PLC ± 0.25		PRODUCT SPEC	SLANT INSERTION, REVERSED TYPE	
1 PLC ± 0.25		APPLICATION SPEC	SATA CONNECTOR	
2 PLC ± 0.25		WEIGHT	SIZE	CAGE CODE
3 PLC ± 0.25		CUSTOMER DRAWING	A2	00779
4 PLC ± -			DRAWING NO	C-2129475
ANGLES ± 3°		SCALE	N/A	SHEET
MATERIAL		FINISH		3 of 3
				REV
				A