



Chipsmall Limited consists of a professional team with an average of over 10 year of expertise in the distribution of electronic components. Based in Hongkong, we have already established firm and mutual-benefit business relationships with customers from,Europe,America and south Asia,supplying obsolete and hard-to-find components to meet their specific needs.

With the principle of “Quality Parts,Customers Priority,Honest Operation,and Considerate Service”,our business mainly focus on the distribution of electronic components. Line cards we deal with include Microchip,ALPS,ROHM,Xilinx,Pulse,ON,Everlight and Freescale. Main products comprise IC,Modules,Potentiometer,IC Socket,Relay,Connector.Our parts cover such applications as commercial,industrial, and automotives areas.

We are looking forward to setting up business relationship with you and hope to provide you with the best service and solution. Let us make a better world for our industry!



Contact us

Tel: +86-755-8981 8866 Fax: +86-755-8427 6832

Email & Skype: info@chipsmall.com Web: www.chipsmall.com

Address: A1208, Overseas Decoration Building, #122 Zhenhua RD., Futian, Shenzhen, China



THIS DRAWING IS UNPUBLISHED.

RELEASED FOR PUBLICATION

20

© COPYRIGHT 20 BY -

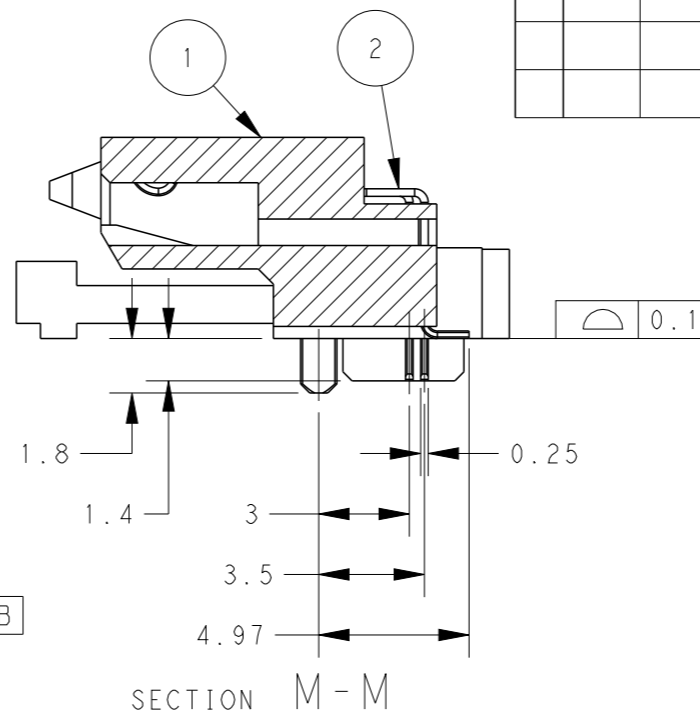
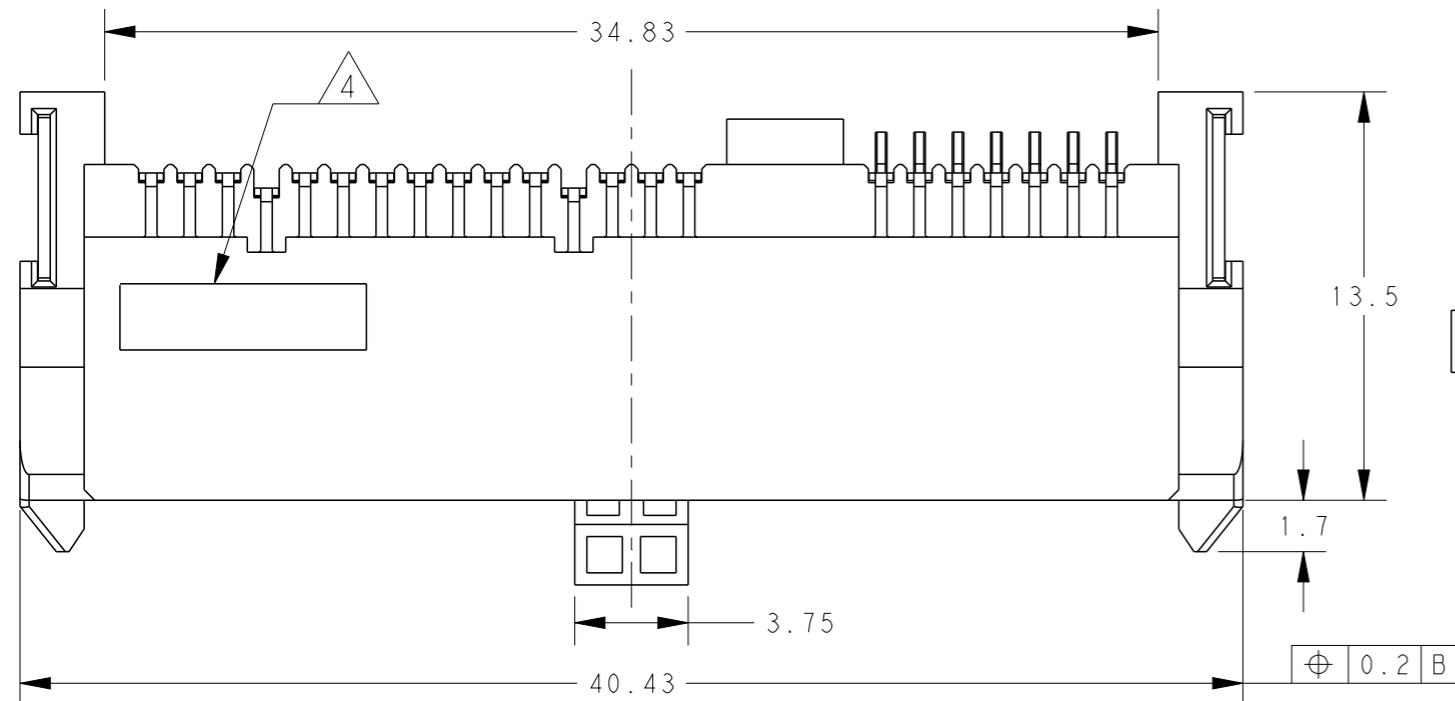
ALL RIGHTS RESERVED.

LOC	DIST
DW	

REVISIONS

P	LTR	DESCRIPTION	DATE	DWN	APVD
	A	RELEASED	11OCT2013	W.C	V.P

2129583-1: AS SHOWN

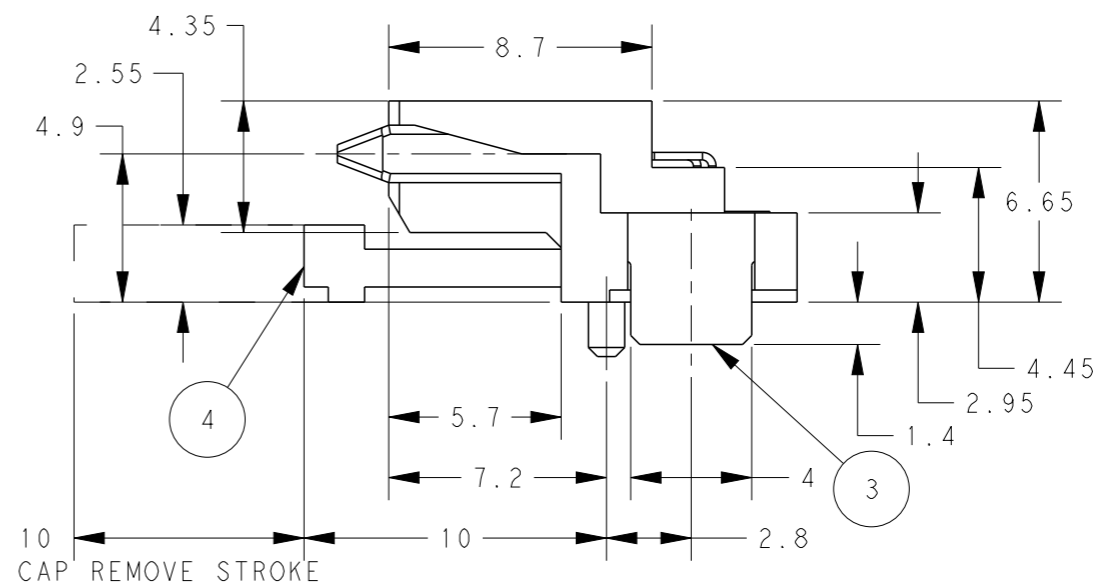
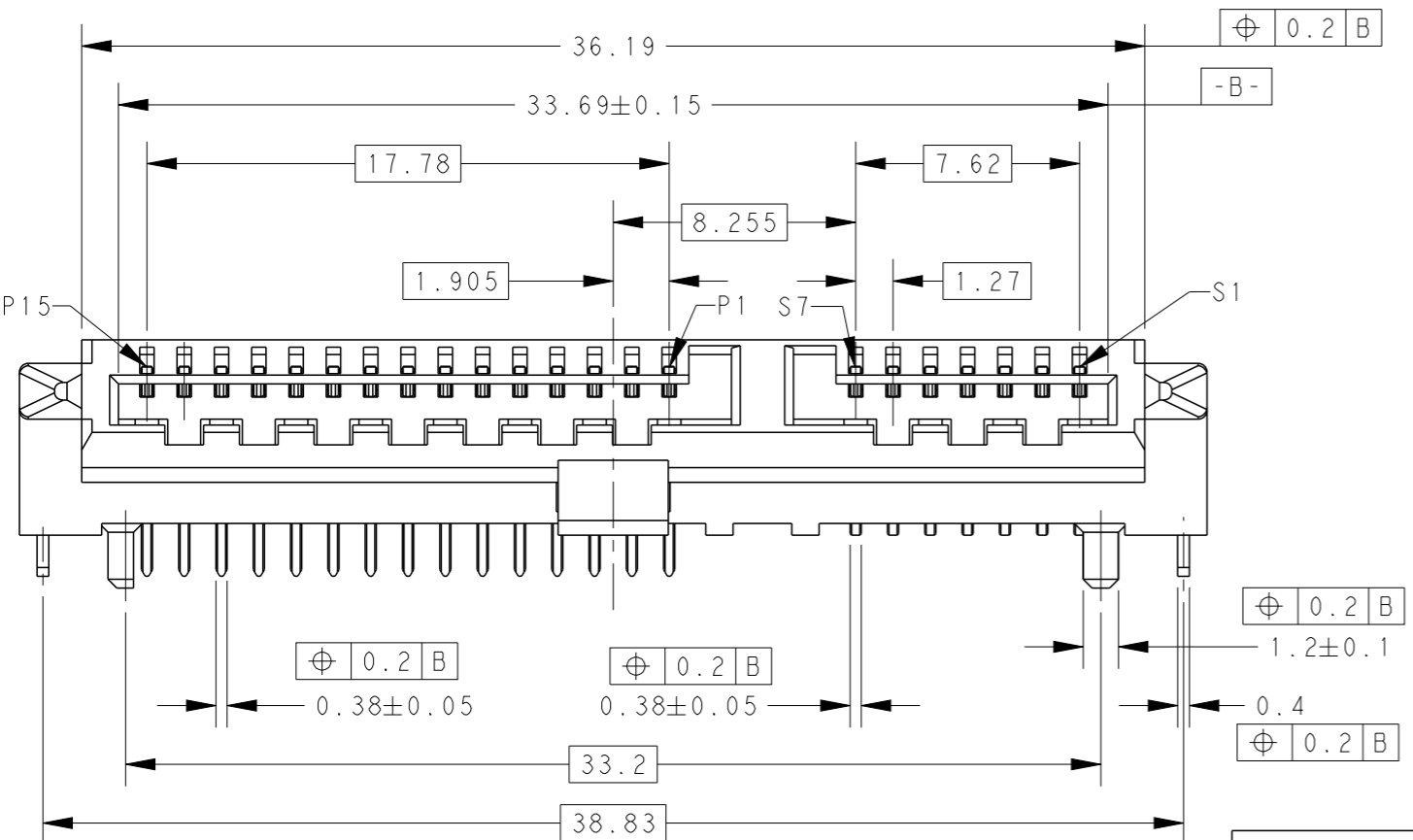


- MATERIAL
 - ① HOUSING: HIGH TEMPERATURE THERMOPLASTIC UL94V-0, COLOR: BLACK
 - ② CONTACT: COPPER ALLOY
 - ③ LEG: COPPER ALLOY
 - ④ CAP: HIGH TEMPERATURE THERMOPLASTIC UL94V-0, COLOR: BLACK

- FINISH:
 - CONTACT: CONTACT AREA: AU PLATING 0.127um WITH LUBRICANT HM-15
 - SOLDER TAILS: MATTE-TIN PLATING 2.5um. NICKEL UNDER PLATING 1.3um OVER ALL.
 - SOLDER LEG: MATTE-TIN PLATING 2.5um NICKEL UNDER PLATING 1.3um OVER ALL.

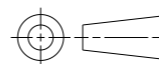
- MEET HALOGEN FREE REQUIREMENT:
 - Cl: 900 ppm MAX.
 - Br: 900 ppm MAX.

▲ DATE CODE
 WW YY D S
 └──┬──┬──┬──
 ASSY MECHINE ID
 DAY OF WEEK
 WEEK OF YEAR
 THE LAST DIGITS OF YEAR



THIS DRAWING IS A CONTROLLED DOCUMENT.

DIMENSIONS: mm



TOLERANCES UNLESS OTHERWISE SPECIFIED:

0 PLC	±0.2
1 PLC	±0.2
2 PLC	±0.2
3 PLC	±0.2
4 PLC	±0.2
ANGLES	±5

MATERIAL

FINISH

DWN W. CHEN 27NOV2012

CHK H. KODAMA 27NOV2012

APVD H. KODAMA 27NOV2012

PRODUCT SPEC 108-99048

APPLICATION SPEC 501-99048

WEIGHT

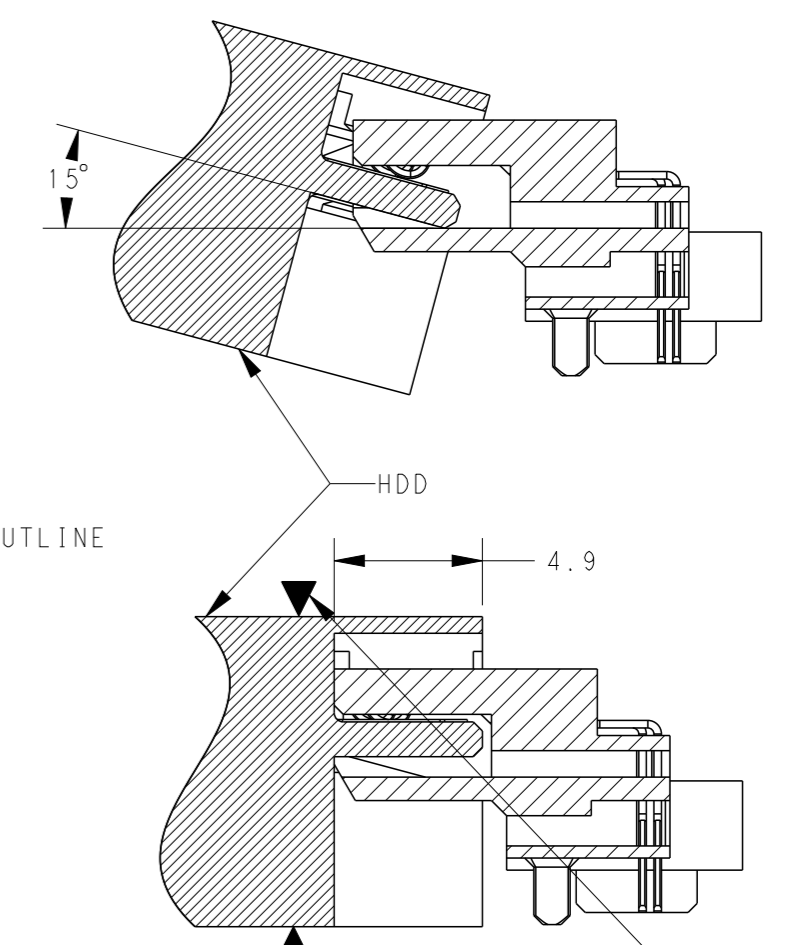
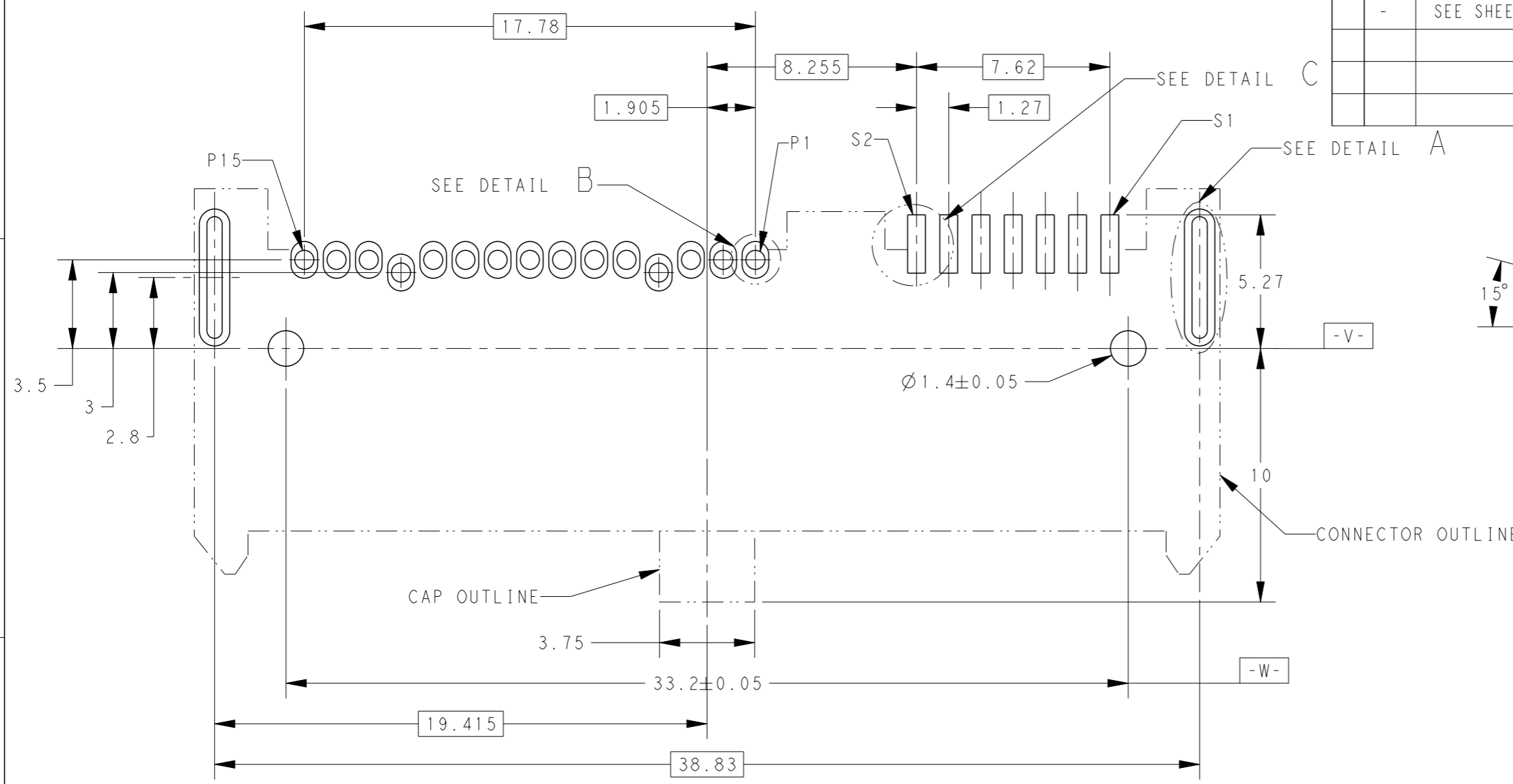
NAME
 REC. ASSEMBLY
 SLANT INSERTION SATA H4.9
 6.0 GBPS

SIZE	CAGE CODE	DRAWING NO	RESTRICTED TO
A3	00779	C-2129583	-

CUSTOMER DRAWING SCALE 4:1 SHEET 1 OF 3 REV A

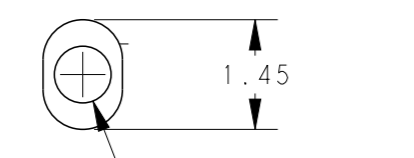
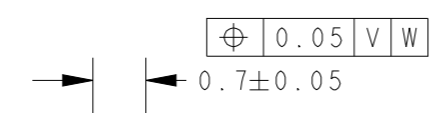
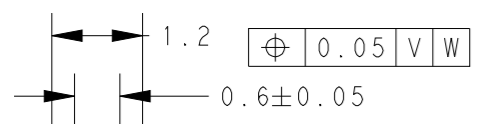
THIS DRAWING IS UNPUBLISHED. RELEASED FOR PUBLICATION 20
 © COPYRIGHT 20 BY - ALL RIGHTS RESERVED.

LOC	DIST	REVISIONS			
P	LTR	DESCRIPTION	DATE	DWN	APVD
DW	-	SEE SHEET 1	-	-	-



SUGGEST TO ADD SUPPORTS ON THE HDD NEAR THE CONNECTORS

REFERENCE PCB LAYOUT (TOLERANCE ±0.05)
 REFERENCE PCB THICKNESS T=1.0
 SCALE 5:1



DETAIL A
 SCALE 10:1

DETAIL B
 SCALE 10:1

DETAIL C
 SCALE 10:1

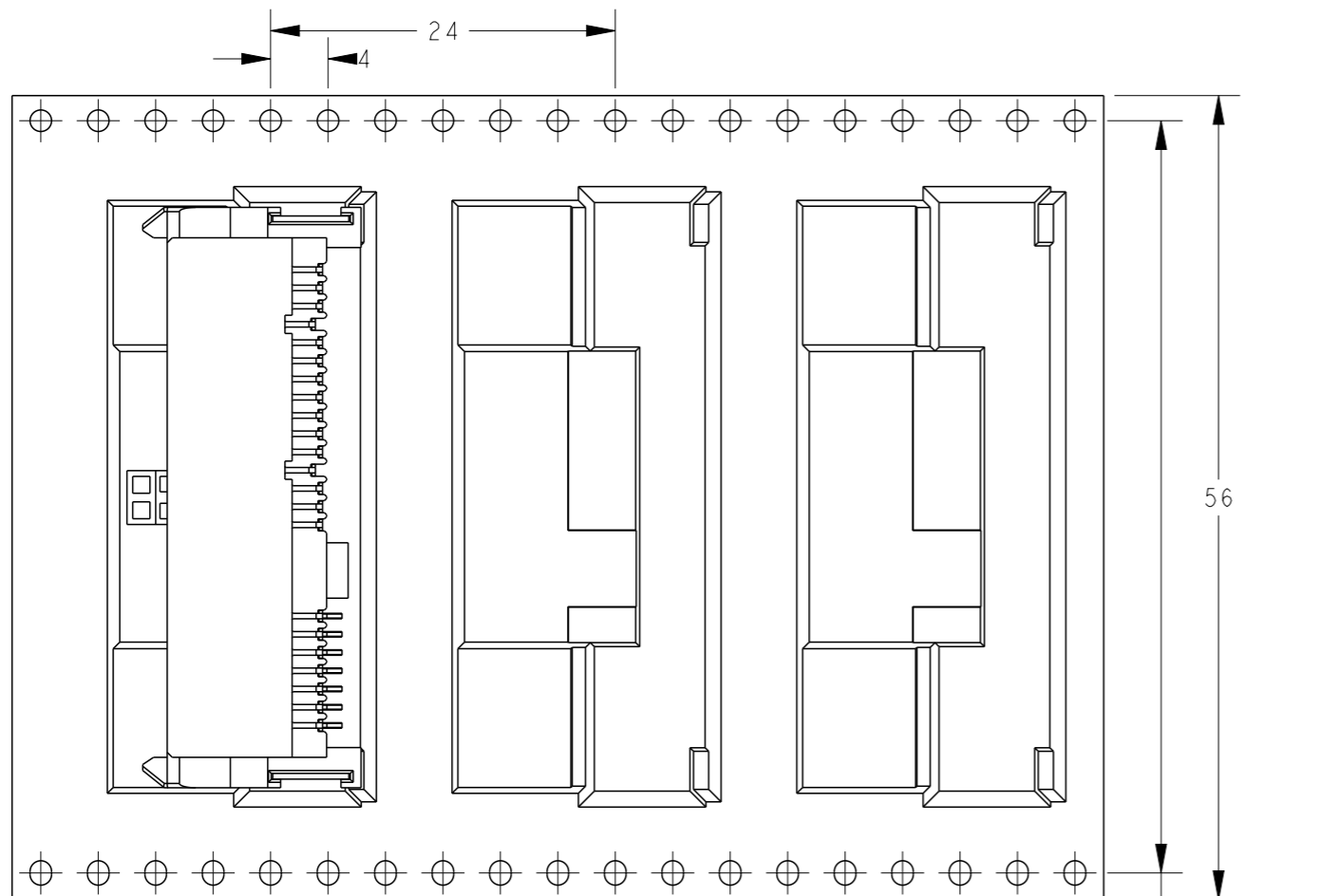
THIS DRAWING IS A CONTROLLED DOCUMENT.		DWN	-
DIMENSIONS: mm		CHK	-
TOLERANCES UNLESS OTHERWISE SPECIFIED:		APVD	-
0 PLC	±0.2	PRODUCT SPEC	-
1 PLC	±0.2	APPLICATION SPEC	-
2 PLC	±0.2	WEIGHT	-
3 PLC	±0.2	CUSTOMER DRAWING	-
4 PLC	±0.2		
ANGLES	±5		
FINISH	-		

DWN		-		 TE Connectivity
CHK		-		
APVD		-		NAME
PRODUCT SPEC		-		REC. ASSEMBLY
APPLICATION SPEC		-		SLANT INSERTION SATA H4.9
WEIGHT		-		6.0 GBPS
SIZE	CAGE CODE	DRAWING NO	RESTRICTED TO	
A3	00779	C-2129583	-	
SCALE 5:1		SHEET 2 OF 3	REV A	

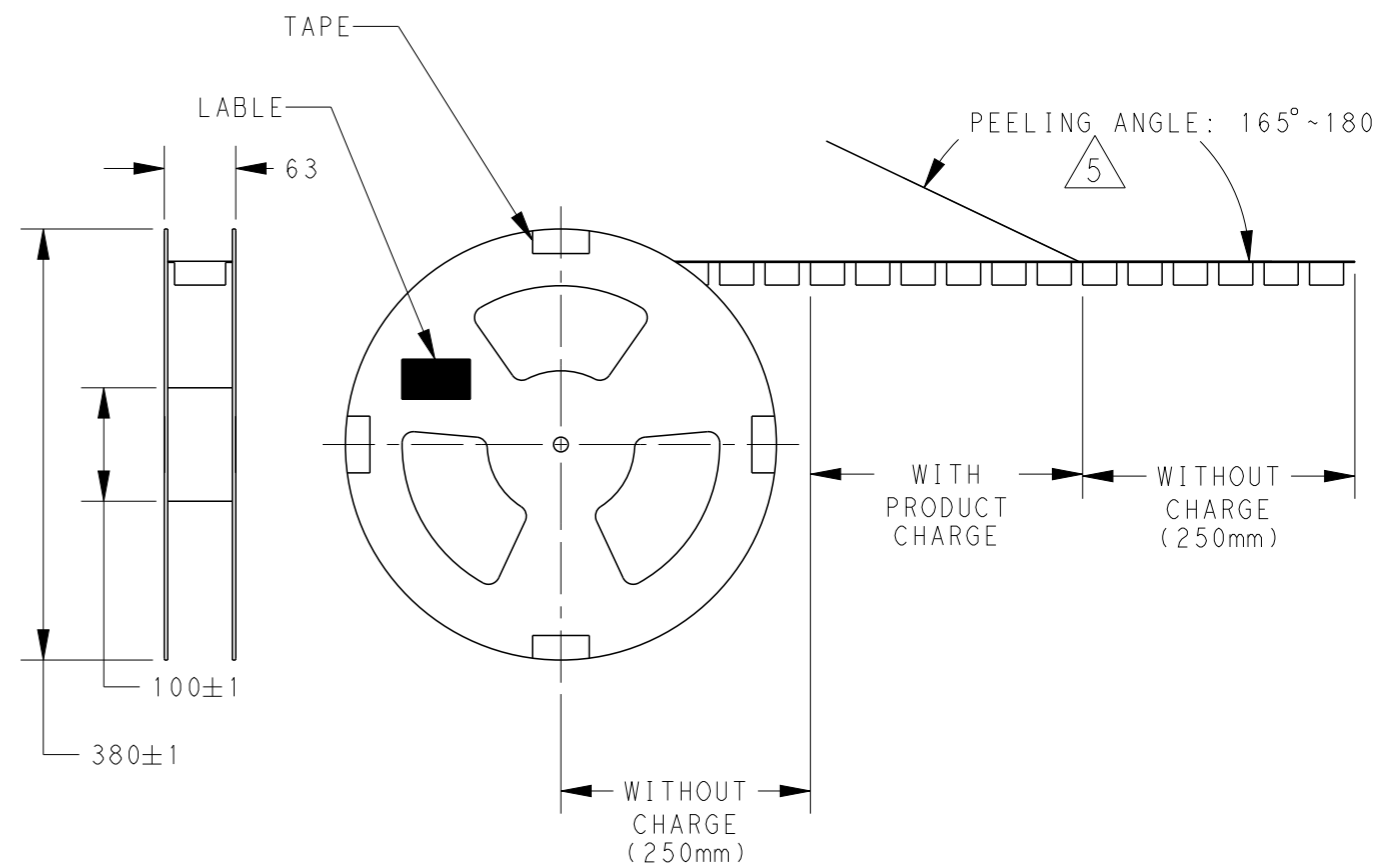
LOC DW DIST -

REVISIONS

P	LTR	DESCRIPTION	DATE	DWN	APVD
-	-	SEE SHEET 1	-	-	-



- △ PEELING STRENGTH OF COVER TAPE: 0.2N~1.2N
- 6. PACKING MATERIAL: CARRY TAPE: PS, COLOR: BLACK
COVER TAPE: PET, COLOR: CLEAR
- 7. QUANTITY: 380PCS/ REEL
1140PCS/ BOX



THIS DRAWING IS A CONTROLLED DOCUMENT.		DWN	STE TE Connectivity	
DIMENSIONS: mm		CHK		
TOLERANCES UNLESS OTHERWISE SPECIFIED:		APVD	NAME	
0 PLC	±0.2	PRODUCT SPEC	REC. ASSEMBLY	
1 PLC	±0.2	APPLICATION SPEC	SLANT INSERTION SATA H4.9	
2 PLC	±0.2	WEIGHT	SIZE	RESTRICTED TO
3 PLC	±0.2	CUSTOMER DRAWING	A300779	©=2129583
4 PLC	±0.2	SCALE	NONE	SHEET 3 OF 3
ANGLES	±5	REV	A	
FINISH	-			