



Chipsmall Limited consists of a professional team with an average of over 10 year of expertise in the distribution of electronic components. Based in Hongkong, we have already established firm and mutual-benefit business relationships with customers from,Europe,America and south Asia,supplying obsolete and hard-to-find components to meet their specific needs.

With the principle of "Quality Parts,Customers Priority,Honest Operation,and Considerate Service",our business mainly focus on the distribution of electronic components. Line cards we deal with include Microchip,ALPS,ROHM,Xilinx,Pulse,ON,Everlight and Freescale. Main products comprise IC,Modules,Potentiometer,IC Socket,Relay,Connector.Our parts cover such applications as commercial,industrial, and automotives areas.

We are looking forward to setting up business relationship with you and hope to provide you with the best service and solution. Let us make a better world for our industry!



## Contact us

Tel: +86-755-8981 8866 Fax: +86-755-8427 6832

Email & Skype: info@chipsmall.com Web: www.chipsmall.com

Address: A1208, Overseas Decoration Building, #122 Zhenhua RD., Futian, Shenzhen, China



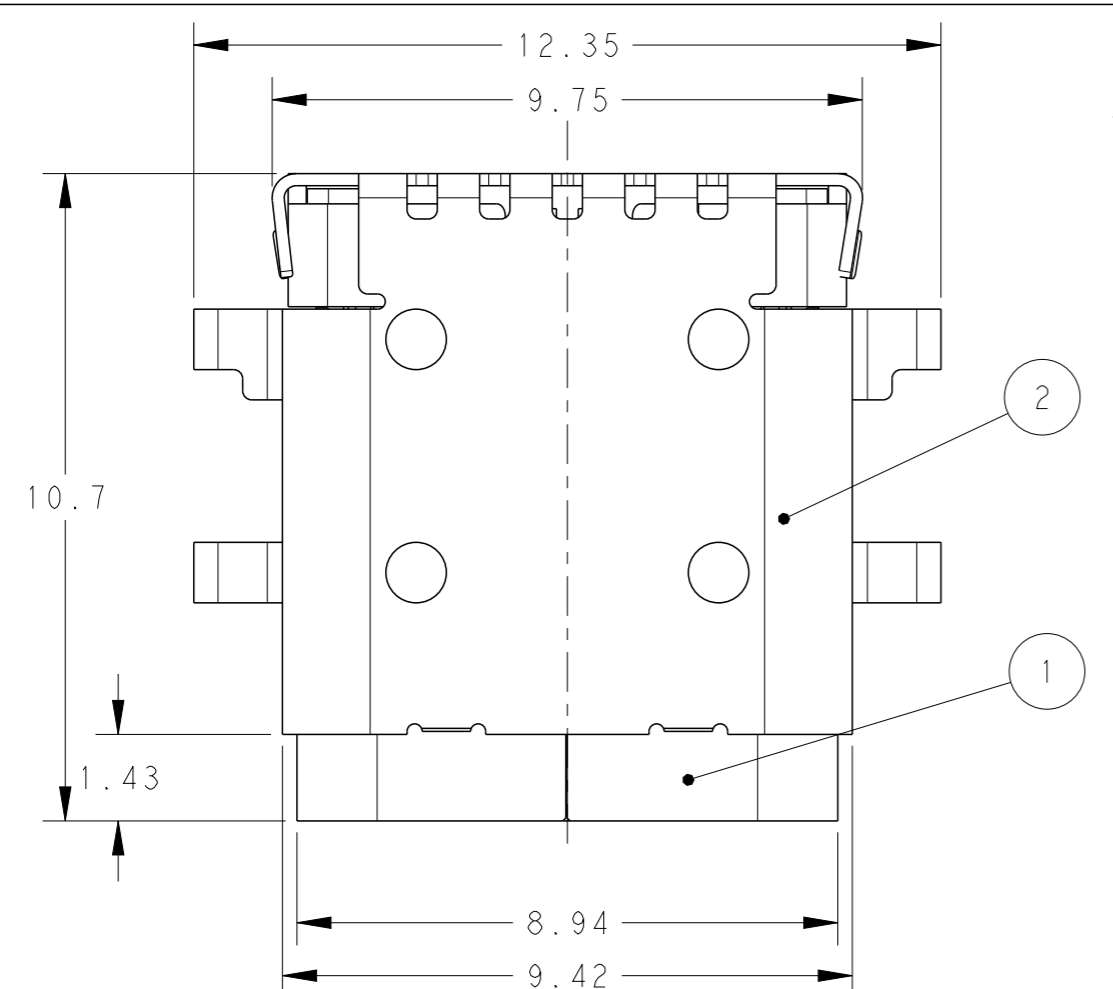
THIS DRAWING IS UNPUBLISHED. RELEASED FOR PUBLICATION 20

© COPYRIGHT 20 BY - ALL RIGHTS RESERVED.

REVISIONS

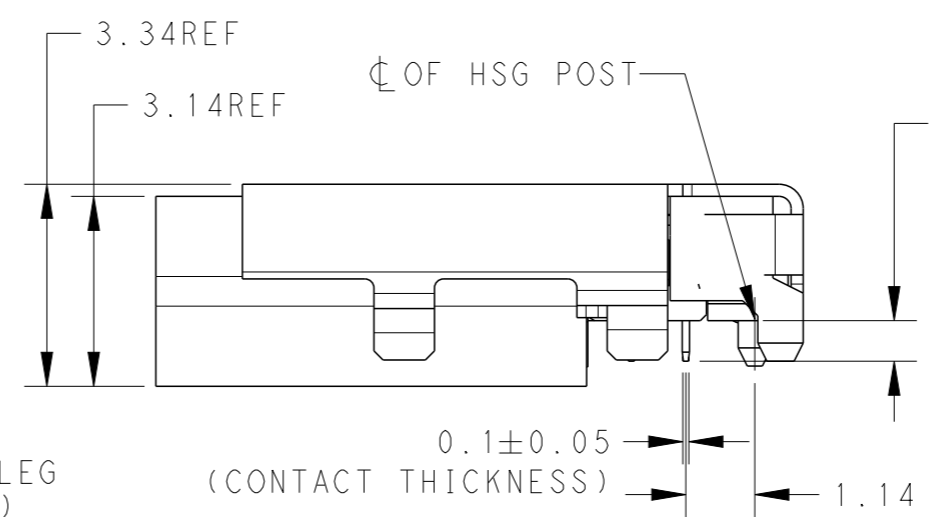
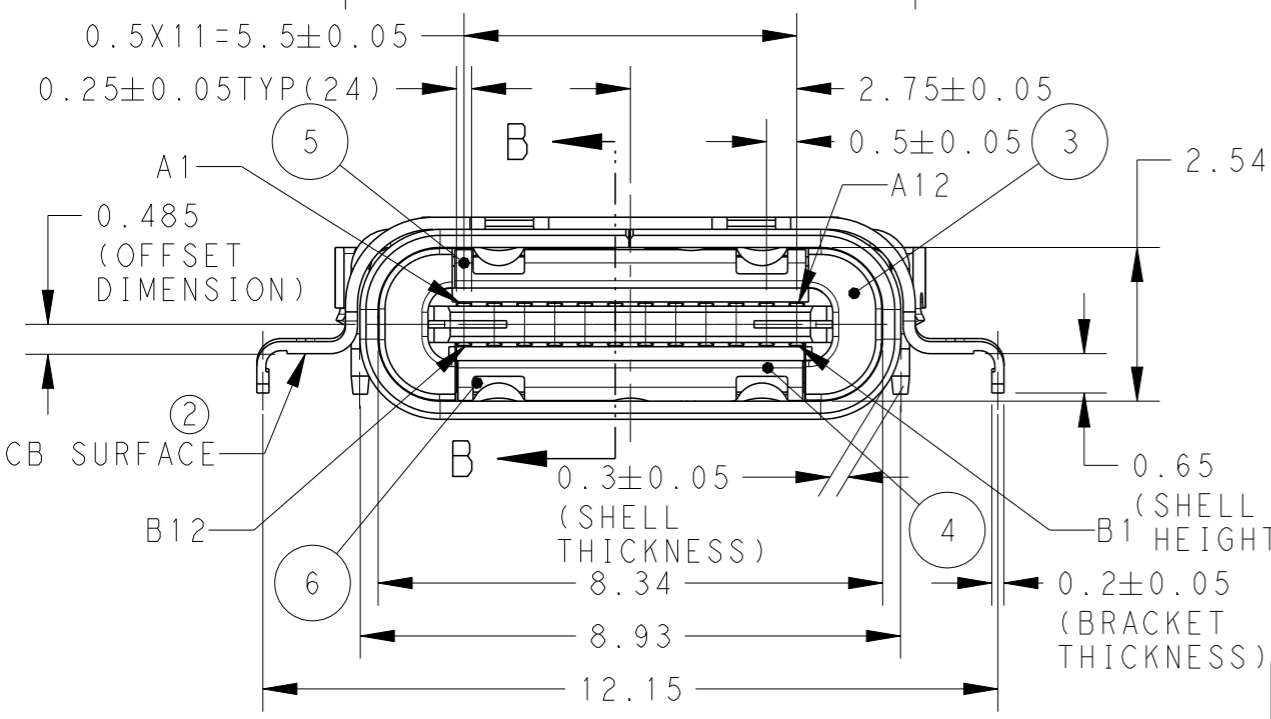
P	LTR	DESCRIPTION	DATE	DWN	APVD
	2	REVISED	28NOV2014	J.L	M.C

2129691-1; AS SHOWN



- △ MATERIAL :
- ① SHELL : STAINLESS STEEL
  - ② SHELL BRACKET : STAINLESS STEEL
  - ③ HOUSING : HIGH TEMPERATURE THERMO PLASTIC, BLACK, UL94V-0
  - ④ SECONDARY HIGH TEMPERATURE THERMO PLASTIC, BLACK, UL94V-0
  - ⑤ UPPER INNER SHELL : STAINLESS STEEL
  - ⑥ LOWER INNER SHELL : STAINLESS STEEL
  - ⑦ UPPER CONTACT : COPPER ALLOY
  - ⑧ LOWER CONTACT : COPPER ALLOY
  - ⑨ MID-PLATE : STAINLESS STEEL
- △ FINISH :
- CONTACT : ALL OVER NI PLATING(2.0um)  
CONTACT AREA AU PLATING (0.75um)  
SOLDERTAIL AREA TIN PLATING(2.0um)
  - SHELL : ALL OVER NI PLATING (1.3um)
  - BRACKET : ALL OVER NI PLATING (1.3um)

DESIGN APPROVED THIS PRINT IS  
**PRELIMINARY**  
 TO FIRST PIECE APPROVAL  
 CONTACT PRODUCT ENGINEERING  
 BEFORE USING THIS PRINT



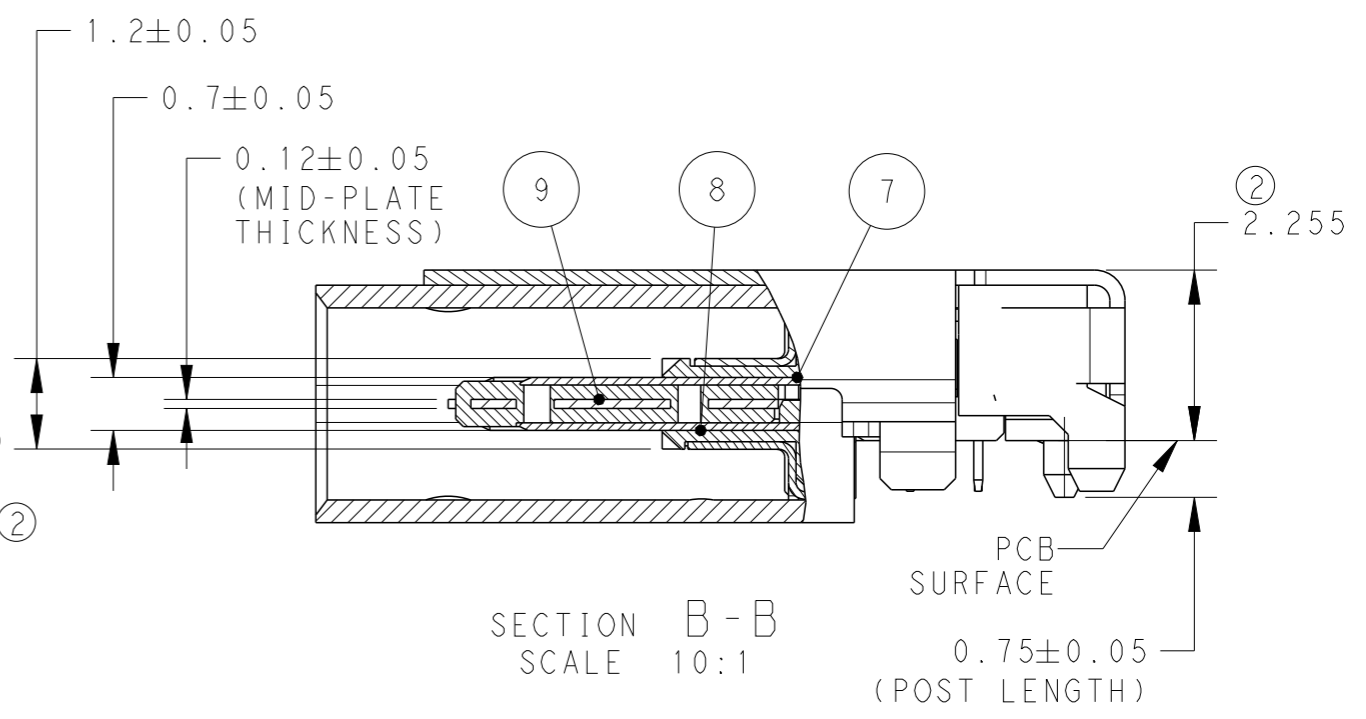
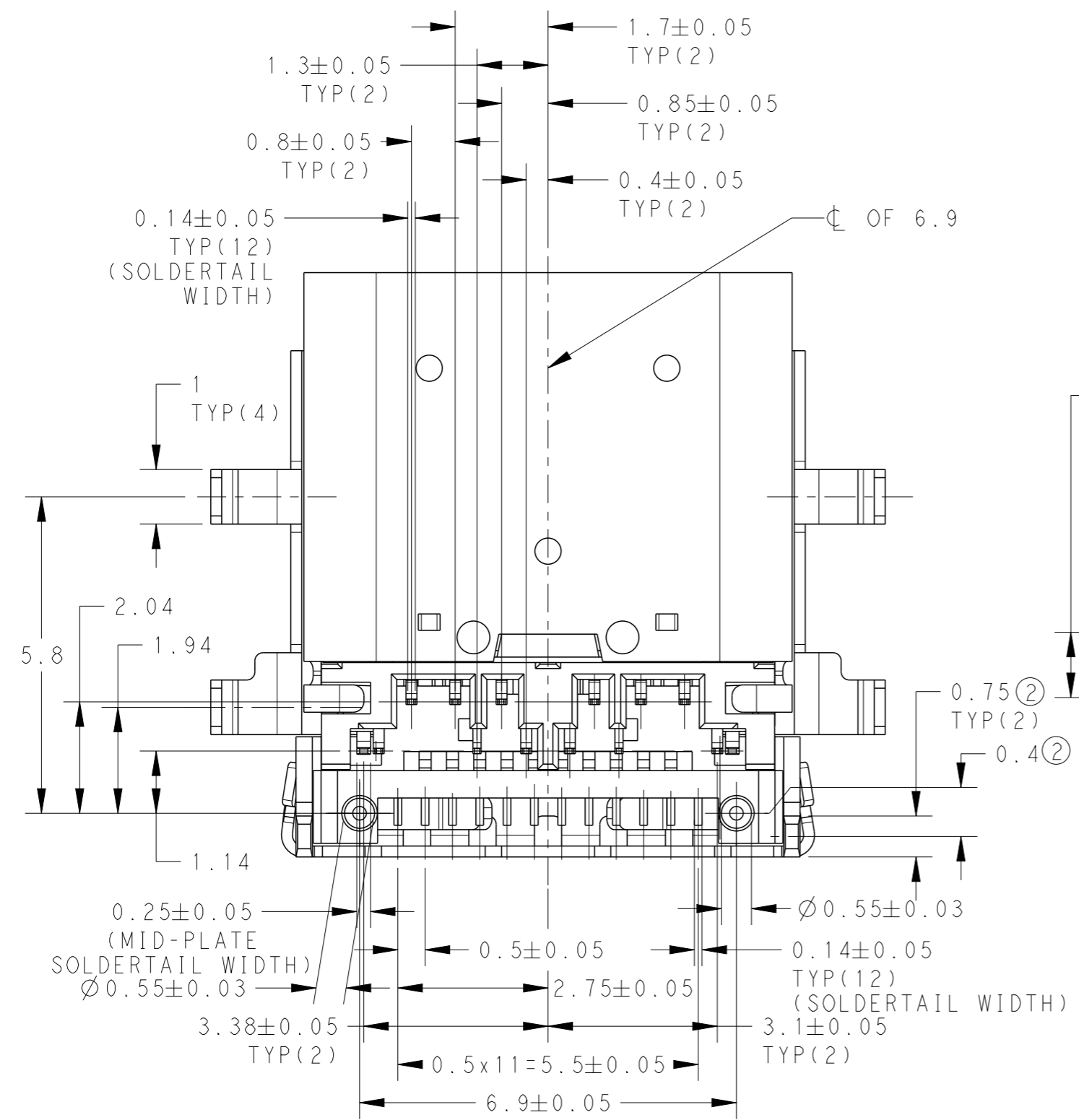
Q'TY	NAME	ITEM
1	MID PLATE	⑨
12	LOWER CONTACT	⑧
12	UPPER CONTACT	⑦
1	LOWER INNER SHELL	⑥
1	UPPER INNER SHELL	⑤
1	SECONDARY HOUSING	④
1	HOUSING	③
1	SHELL BRACKET	②
1	SHELL	①

THIS DRAWING IS A CONTROLLED DOCUMENT.		DWN G. SHIH 4NOV2014
DIMENSIONS: mm		CHK M. CHAO 6NOV2014
TOLERANCES UNLESS OTHERWISE SPECIFIED:		APVD M. CHAO 6NOV2014
0 PLC ±	±0.25	NAME TYPE-C RECEPTACLE ASSEMBLY OFFSET 0.485MM HYBRID TYPE
1 PLC ±	±3°	
2 PLC ±	±	
3 PLC ±	±	
4 PLC ANGLES ±	±	PRODUCT SPEC
MATERIAL	FINISH	APPLICATION SPEC
①	②	WEIGHT

TE Connectivity		RESTRICTED TO		
		SIZE A3	CAGE CODE 00779	DRAWING NO C-2129691
CUSTOMER DRAWING		SCALE 8/1	SHEET 1 OF 3	REV 2

P	LTR	DESCRIPTION	DATE	DWN	APVD
-	-	SEE SHEET 1	-	-	-

2129691-1; AS SHOWN



SECTION B-B  
SCALE 10:1

VIEW M  
SCALE 10:1

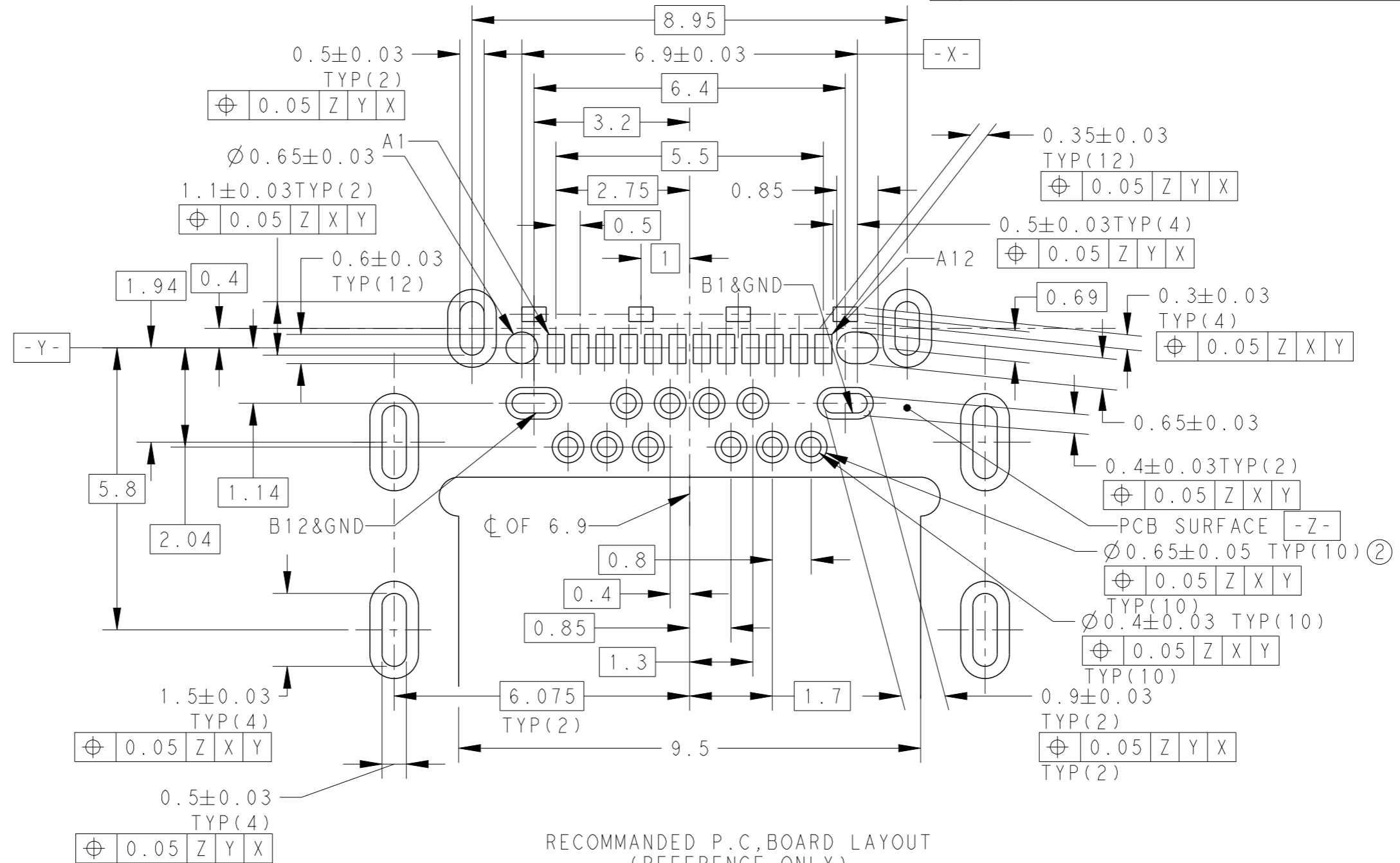
DESIGN APPROVED THIS PRINT IS  
**PRELIMINARY**  
 TO FIRST PIECE APPROVAL  
 CONTACT PRODUCT ENGINEERING  
 BEFORE USING THIS PRINT

THIS DRAWING IS A CONTROLLED DOCUMENT.	
DIMENSIONS: mm	TOLERANCES UNLESS OTHERWISE SPECIFIED: 0 PLC ± ±0.25 1 PLC ± ±0.25 2 PLC ± ±3° 3 PLC ± ±3° 4 PLC ± ± ANGLES ± ± FINISH -
MATERIAL -	

DWN -	CHK -	APVD -	PRODUCT SPEC -	APPLICATION SPEC -	WEIGHT -	TE Connectivity		NAME TYPE-C RECEPTACLE ASSEMBLY OFFSET 0.485MM HYBRID TYPE	RESTRICTED TO
CUSTOMER DRAWING						SIZE A3	CAGE CODE 00779	DRAWING NO C-2129691	
SCALE 8/1						SHEET 2	OF 3	REV 2	

REVISIONS

P	LTR	DESCRIPTION	DATE	DWN	APVD
-	-	SEE SHEET 1	-	-	-



RECOMMENDED P.C. BOARD LAYOUT  
 (REFERENCE ONLY)  
 SCALE 10:1

DESIGN APPROVED THIS PRINT IS  
**PRELIMINARY**  
 TO FIRST PIECE APPROVAL  
 CONTACT PRODUCT ENGINEERING  
 BEFORE USING THIS PRINT

THIS DRAWING IS A CONTROLLED DOCUMENT.

DIMENSIONS: mm		TOLERANCES UNLESS OTHERWISE SPECIFIED:	
		0 PLC	±-
		1 PLC	± ±0.05
		2 PLC	± ±1°
		3 PLC	± ±
MATERIAL		4 PLC	± ±
		ANGLES	±-
		FINISH	-

DWN	-	 TE Connectivity			
CHK	-				
APVD	-				
PRODUCT SPEC	-	NAME			
APPLICATION SPEC	-	TYPE-C RECEPTACLE ASSEMBLY OFFSET 0.485MM HYBRID TYPE			
WEIGHT	-	SIZE	CAGE CODE	DRAWING NO	RESTRICTED TO
CUSTOMER DRAWING	-	A3	00779	©-2129691	-
		SCALE	SHEET	OF	REV
		8/1	3	3	2