



Chipsmall Limited consists of a professional team with an average of over 10 year of expertise in the distribution of electronic components. Based in Hongkong, we have already established firm and mutual-benefit business relationships with customers from,Europe,America and south Asia,supplying obsolete and hard-to-find components to meet their specific needs.

With the principle of "Quality Parts,Customers Priority,Honest Operation,and Considerate Service",our business mainly focus on the distribution of electronic components. Line cards we deal with include Microchip,ALPS,ROHM,Xilinx,Pulse,ON,Everlight and Freescale. Main products comprise IC,Modules,Potentiometer,IC Socket,Relay,Connector.Our parts cover such applications as commercial,industrial, and automotives areas.

We are looking forward to setting up business relationship with you and hope to provide you with the best service and solution. Let us make a better world for our industry!



Contact us

Tel: +86-755-8981 8866 Fax: +86-755-8427 6832

Email & Skype: info@chipsmall.com Web: www.chipsmall.com

Address: A1208, Overseas Decoration Building, #122 Zhenhua RD., Futian, Shenzhen, China



THIS DRAWING IS UNPUBLISHED. RELEASED FOR PUBLICATION
 © COPYRIGHT 19 BY AMP INCORPORATED, HARRISBURG, PA. ALL INTERNATIONAL RIGHTS RESERVED. AMP PRODUCTS MAY BE COVERED BY U.S. AND FOREIGN PATENTS AND/OR PATENTS PENDING.

REVISIONS						
P	F	ZONE	LTR	DESCRIPTION	DATE	APPROVED
✓		0		RELEASED	7-25-85	YMPH JB

D

C

B

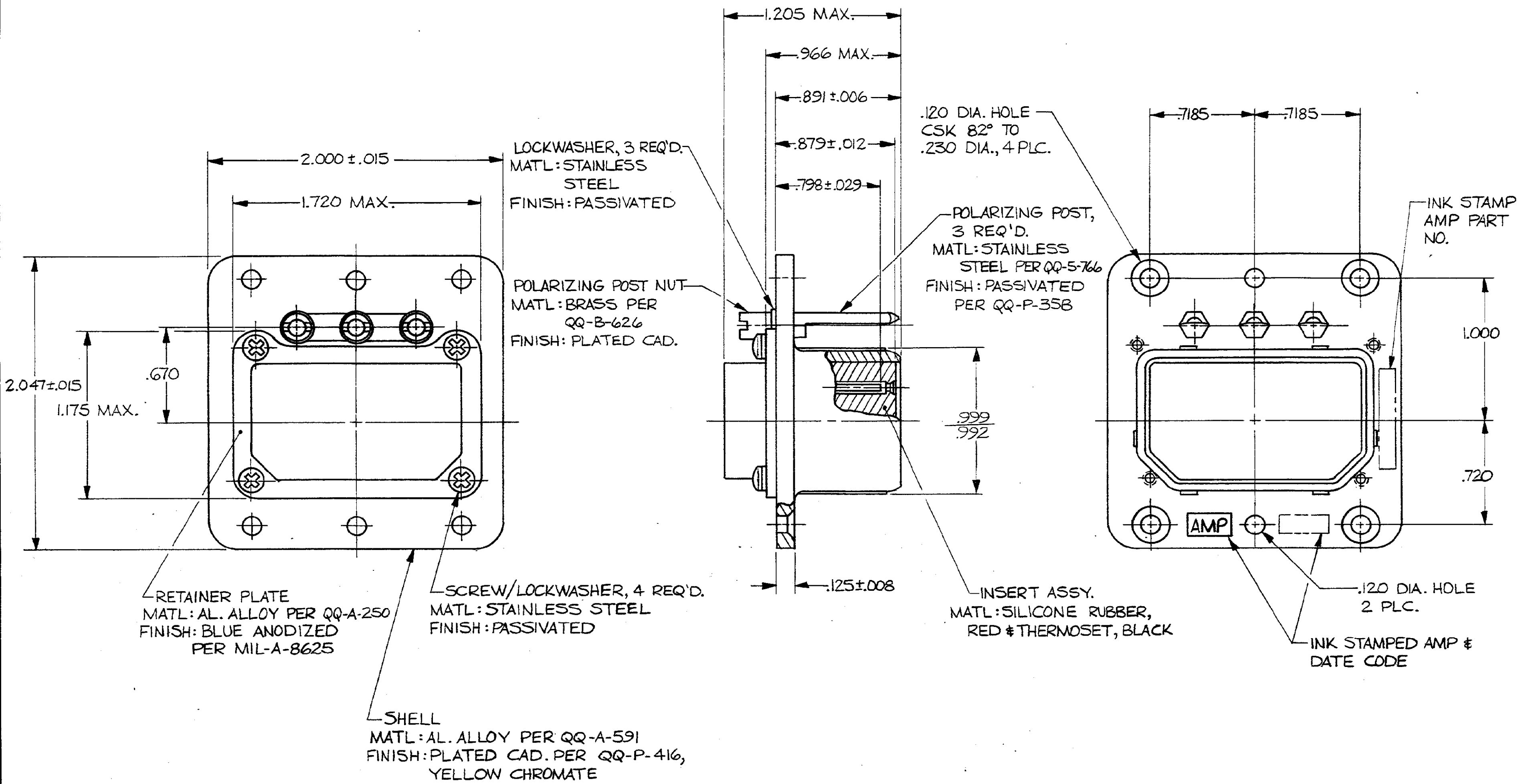
A

D

C

B

A



- KEYS ARE SHOWN IN POSITION 01 FOR ILLUSTRATION ONLY.
- CONTACTS ARE SHOWN IN POSITION FOR ILLUSTRATION ONLY.
- CONNECTOR MEETS AMP PRODUCT SPEC. 108-10019.

UNLESS OTHERWISE SPECIFIED DIMENSIONS ARE IN INCHES. TOLERANCES ON: DECIMALS ± .005 ANGLES ± _____ MATERIAL SEE CALLOUTS FINISH SEE CALLOUTS	CONTRACT NO.	AS SHOWN	213077-1
	DR <i>Mark P. Hoffbauer</i> 7-25-85	DESCRIPTION	PART NO
	CHK <i>A. Boullianne</i> 7-31-85	NAME	AMP AMP INCORPORATED Harrisburg, Pa. 17105
	APPD <i>A. Boullianne</i> 7-31-85	CONNECTOR ASSEMBLY, ARINC, SINGLE INSERT	
	APPD <i>A. Boullianne</i> 7-31-85	SIZE	FSCM NO
	DSGN APPD	C	00779
	OTHER APPD	DRAWING NO	213077
		SCALE	NTS
		SHEET	

213077