



Chipsmall Limited consists of a professional team with an average of over 10 year of expertise in the distribution of electronic components. Based in Hongkong, we have already established firm and mutual-benefit business relationships with customers from,Europe,America and south Asia,supplying obsolete and hard-to-find components to meet their specific needs.

With the principle of “Quality Parts,Customers Priority,Honest Operation,and Considerate Service”,our business mainly focus on the distribution of electronic components. Line cards we deal with include Microchip,ALPS,ROHM,Xilinx,Pulse,ON,Everlight and Freescale. Main products comprise IC,Modules,Potentiometer,IC Socket,Relay,Connector.Our parts cover such applications as commercial,industrial, and automotives areas.

We are looking forward to setting up business relationship with you and hope to provide you with the best service and solution. Let us make a better world for our industry!



## Contact us

Tel: +86-755-8981 8866 Fax: +86-755-8427 6832

Email & Skype: [info@chipsmall.com](mailto:info@chipsmall.com) Web: [www.chipsmall.com](http://www.chipsmall.com)

Address: A1208, Overseas Decoration Building, #122 Zhenhua RD., Futian, Shenzhen, China



THIS DRAWING IS UNPUBLISHED.

RELEASED FOR PUBLICATION

© COPYRIGHT - BY TYCO ELECTRONICS CORPORATION. ALL RIGHTS RESERVED.

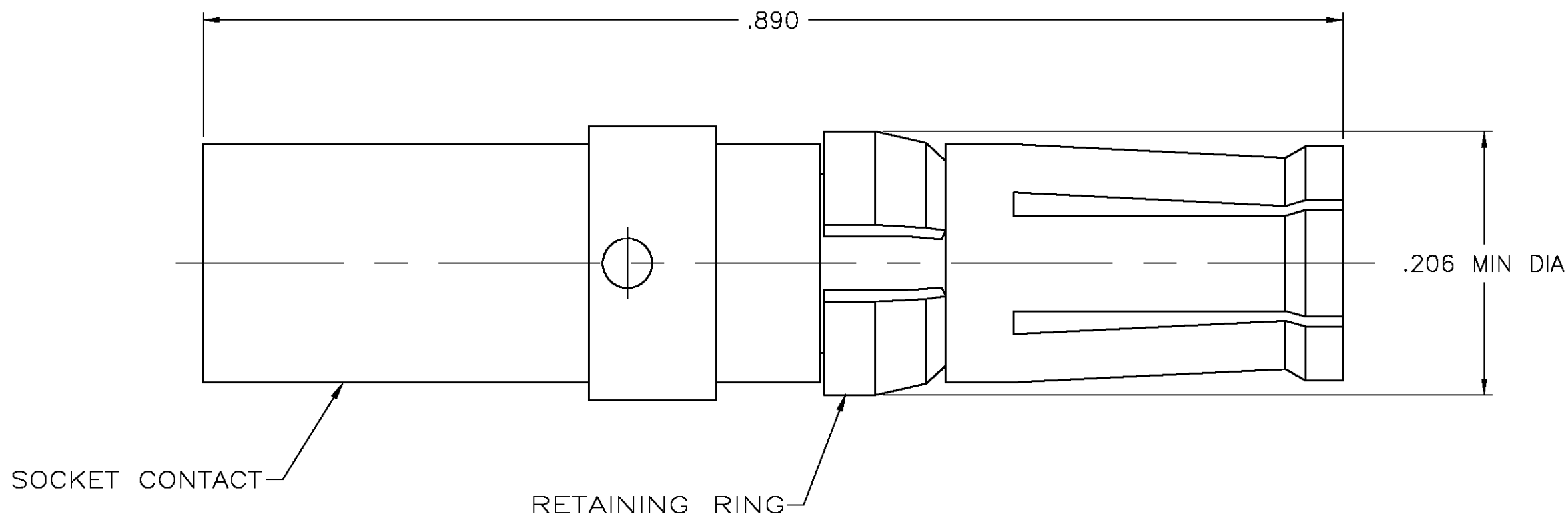
LOC	DIST	REVISIONS				
FT	0	P	LTR	DESCRIPTION	DATE	DWN
		D		REVISED PER 0G3B-0008-04	1/12/04	SS
						GS

D

C

B

A



D

C

B

A


- 1

BERYLLIUM COPPER.
- 2

PHOSPHOR BRONZE.
- 3

0.76μm [.000030] MIN GOLD OVER 1.27μm [.000050] MIN NICKEL.
- 4

2.54μm [.000100] MIN NICKEL.

THIS DRAWING IS A CONTROLLED DOCUMENT.			DWN L.SIPE 2-5-92	<b>tyco</b> <b>Electronics</b> Tyco Electronics Corporation Harrisburg, PA 17105		
			CHK R.STONE 2-7-92			
DIMENSIONS: INCHES		TOLERANCES UNLESS OTHERWISE SPECIFIED:		APVD —	NAME	
		0 PLC ± —		SOCKET CONTACT ASSEMBLY, #10 AWG, POWER VIII, METRIMATE —		
		1 PLC ± —				
		2 PLC ± —				
		3 PLC ± .005				
		4 PLC ± —				
ANGLES		— ± —				
MATERIAL		FINISH		RESTRICTED TO		
SOCKET CONTACT: ①		SOCKET CONTACT: ③		SIZE	CAGE CODE	DRAWING NO
RETAINING RING: ②		RETAINING RING: ④		WEIGHT	A2 00779 C=213737	
CUSTOMER DRAWING				SCALE	10:1	SHEET 1 OF 1 REV D

213737