



Chipsmall Limited consists of a professional team with an average of over 10 year of expertise in the distribution of electronic components. Based in Hongkong, we have already established firm and mutual-benefit business relationships with customers from,Europe,America and south Asia,supplying obsolete and hard-to-find components to meet their specific needs.

With the principle of "Quality Parts,Customers Priority,Honest Operation,and Considerate Service",our business mainly focus on the distribution of electronic components. Line cards we deal with include Microchip,ALPS,ROHM,Xilinx,Pulse,ON,Everlight and Freescale. Main products comprise IC,Modules,Potentiometer,IC Socket,Relay,Connector.Our parts cover such applications as commercial,industrial, and automotives areas.

We are looking forward to setting up business relationship with you and hope to provide you with the best service and solution. Let us make a better world for our industry!



Contact us

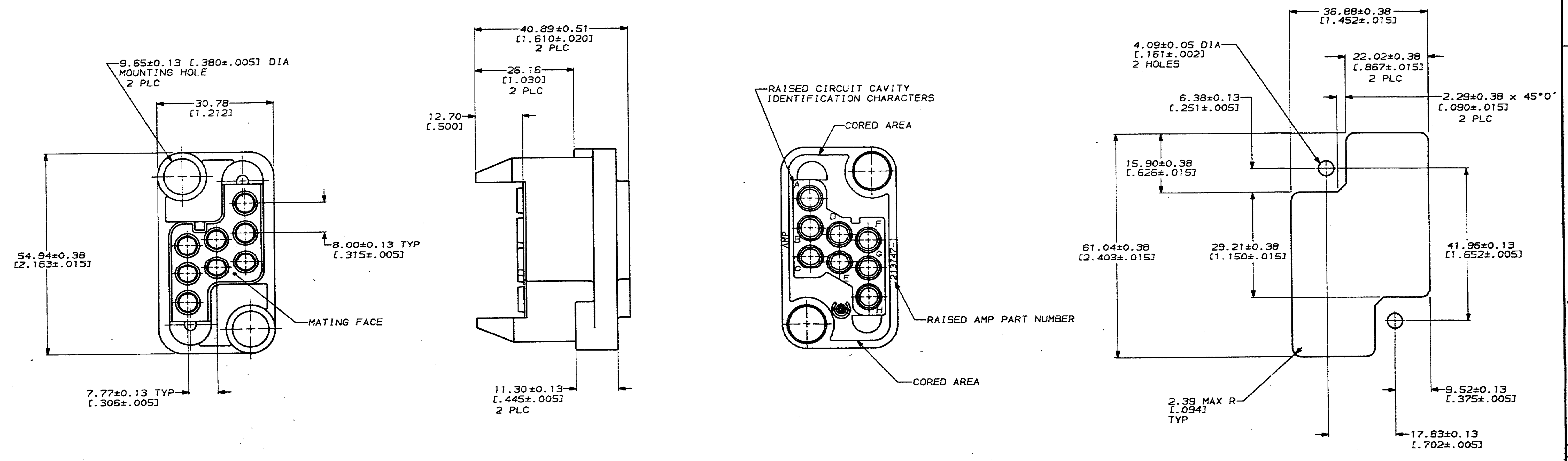
Tel: +86-755-8981 8866 Fax: +86-755-8427 6832

Email & Skype: info@chipsmall.com Web: www.chipsmall.com

Address: A1208, Overseas Decoration Building, #122 Zhenhua RD., Futian, Shenzhen, China



REVISONS		DATE	APPD
1	BD 39	0	RLSE PER NPR 4155, WAS 92-5019-11



RECOMMENDED PANEL CUTOUT

1. THIS PLUG HOUSING MATES WITH RECEPTACLE HOUSING PART NUMBER 213500-1, USE ONLY SHORT PIN CONTACTS WHEN USING POWER B CONTACTS.
2. THIS HOUSING ACCEPTS (B) POWER SIZE 8 OR COAXIAL SIZE 8 SOCKET CONTACTS.

THIS DRAWING IS A CONTROLLED DOCUMENT FOR AMP INCORPORATED. IT IS SUBJECT TO CHANGE AND THE CONTROLLING ENGINEERING ORGANIZATION SHOULD BE CONTACTED FOR THE LATEST REVISION.

DO NOT SCALE PRINT. UNLESS SPECIFIED DIMENSIONS IN mm (INCHES) TOLERANCES ON:		DR 05/04/92 L.SIPE	AMP Incorporated Harrisburg, PA 17105-3608
2 PLC DEC ± 0.25 (.010)		CHK 5-5-92 R.STONE	
3 PLC DEC ± -		APPD 5-5-92 A.TRAVIS	NAME HOUSING, 8 POSITION, PLUG, DRAWER CONNECTOR, METRIMATE
ANGLES ± 0°30'		APPD 5-5-92 C.RONDE	
MATERIAL POLYESTER, UL 94V-0 RATED, BLACK		PRODUCT SPEC	SIZE D
FINISH		APPLICATION SPEC	CAGE CODE 00779
		WEIGHT	DRAWING NO C-213747
			SCALE 2:1
			SHEET 1 OF 1

213747-1
PART NO