



Chipsmall Limited consists of a professional team with an average of over 10 year of expertise in the distribution of electronic components. Based in Hongkong, we have already established firm and mutual-benefit business relationships with customers from,Europe,America and south Asia,supplying obsolete and hard-to-find components to meet their specific needs.

With the principle of “Quality Parts,Customers Priority,Honest Operation,and Considerate Service”,our business mainly focus on the distribution of electronic components. Line cards we deal with include Microchip,ALPS,ROHM,Xilinx,Pulse,ON,Everlight and Freescale. Main products comprise IC,Modules,Potentiometer,IC Socket,Relay,Connector.Our parts cover such applications as commercial,industrial, and automotives areas.

We are looking forward to setting up business relationship with you and hope to provide you with the best service and solution. Let us make a better world for our industry!



Contact us

Tel: +86-755-8981 8866 Fax: +86-755-8427 6832

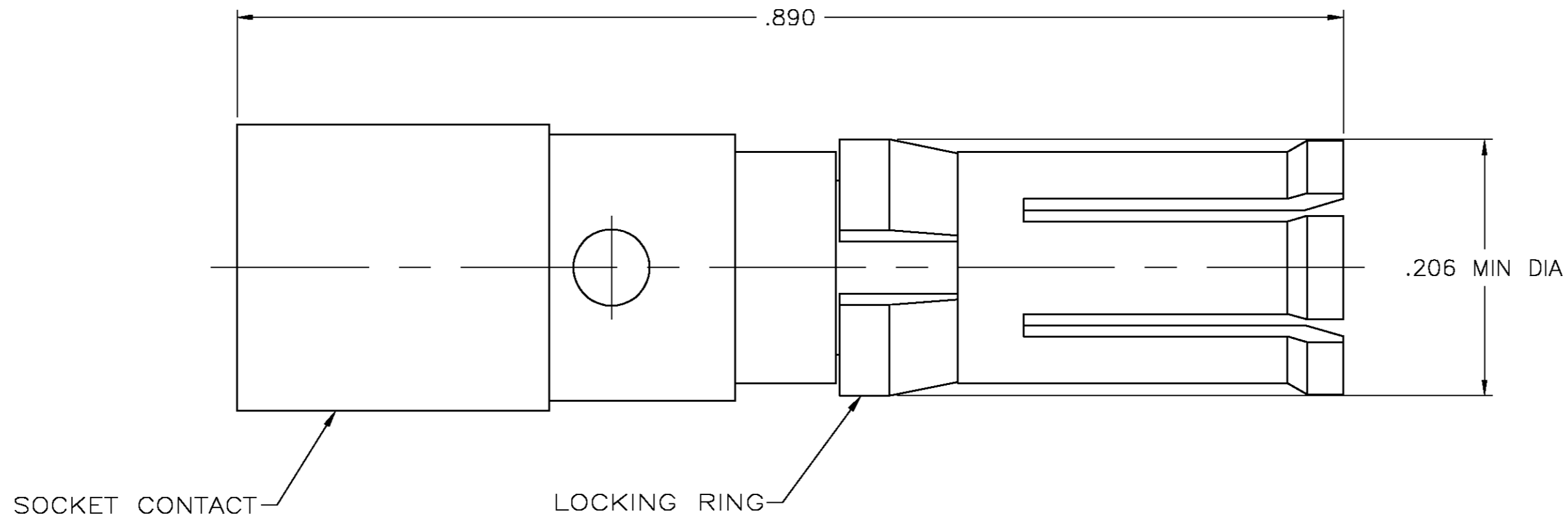
Email & Skype: info@chipsmall.com Web: www.chipsmall.com

Address: A1208, Overseas Decoration Building, #122 Zhenhua RD., Futian, Shenzhen, China



THIS DRAWING IS UNPUBLISHED. RELEASED FOR PUBLICATION
 © COPYRIGHT BY TYCO ELECTRONICS CORPORATION. ALL RIGHTS RESERVED.

LOC		DIST		REVISIONS			
P	LTR	DESCRIPTION		DATE	DWN	APVD	
FT	0	F		REVISED PER 0G3B-0008-04	1/12/04	SS	GS



213750-1
 PART NUMBER

- 1 BERYLLIUM COPPER.
- 2 0.76 μm [.000030] MIN GOLD OVER 1.27 μm [.000050] MIN NICKEL.
- 3 2.54 μm [.000100] MIN NICKEL.

THIS DRAWING IS A CONTROLLED DOCUMENT.		DWN	07/16/92	tyco Electronics	Tyco Electronics Corporation Harrisburg, PA 17105	
DIMENSIONS: INCHES		L.SIPE	7-17-92		NAME	
TOLERANCES UNLESS OTHERWISE SPECIFIED:		CHK	R.STONE	PRODUCT SPEC		
0 PLC ± -		APVD	-	108-1317		
1 PLC ± -		APPLICATION SPEC		114-10014		
2 PLC ± -		SIZE		A2	CAGE CODE	
3 PLC ± .005		DRAWING NO		00779		C=213750
4 PLC ± -		WEIGHT		-		RESTRICTED TO
ANGLES ± -		CUSTOMER DRAWING		SCALE 10:1		SHEET 1 OF 1
MATERIAL SOCKETING CONTACT & LOCKING RING: 1		FINISH SOCKETING CONTACT: 2 LOCKING RING: 3		REV F		