



Chipsmall Limited consists of a professional team with an average of over 10 year of expertise in the distribution of electronic components. Based in Hongkong, we have already established firm and mutual-benefit business relationships with customers from,Europe,America and south Asia,supplying obsolete and hard-to-find components to meet their specific needs.

With the principle of “Quality Parts,Customers Priority,Honest Operation,and Considerate Service”,our business mainly focus on the distribution of electronic components. Line cards we deal with include Microchip,ALPS,ROHM,Xilinx,Pulse,ON,Everlight and Freescale. Main products comprise IC,Modules,Potentiometer,IC Socket,Relay,Connector.Our parts cover such applications as commercial,industrial, and automotives areas.

We are looking forward to setting up business relationship with you and hope to provide you with the best service and solution. Let us make a better world for our industry!



## Contact us

Tel: +86-755-8981 8866 Fax: +86-755-8427 6832

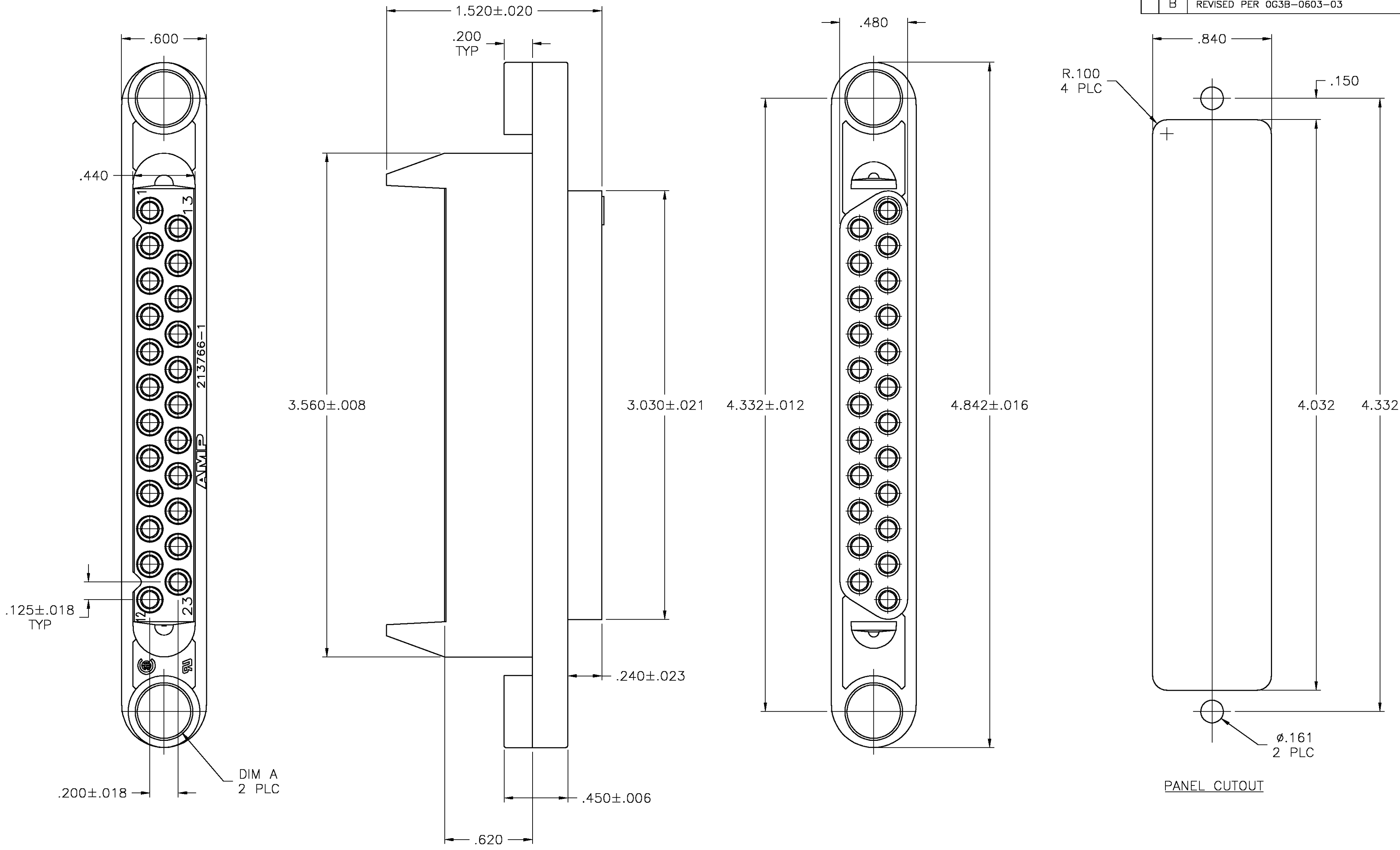
Email & Skype: info@chipsmall.com Web: www.chipsmall.com

Address: A1208, Overseas Decoration Building, #122 Zhenhua RD., Futian, Shenzhen, China



THIS DRAWING IS UNPUBLISHED. RELEASED FOR PUBLICATION  
 © COPYRIGHT BY TYCO ELECTRONICS CORPORATION. ALL RIGHTS RESERVED.

LOC		DIST		REVISIONS			
P	LTR	DESCRIPTION	DATE	DWN	APVD		
FT	0	B	REVISED PER 0G3B-0603-03	8/26/03	SS	GS	



- NOTES:
- THIS PART MATES WITH PIN HEADER ASSEMBLY 213768-1.
  - THIS HOUSING ACCEPTS ANY TYPE III SOCKET CONTACT.
- ⚠ PRELIMINARY PART NUMBER.

⚠	.300	213766-2
	.380	213766-1
	DIM A	PART NO.

THIS DRAWING IS A CONTROLLED DOCUMENT.		DWN	11/02/92	 Tyco Electronics Corporation Harrisburg, PA 17105
DIMENSIONS: INCHES		CHK	11-16-92	
TOLERANCES UNLESS OTHERWISE SPECIFIED:		J.McCLINTON		NAME
0 PLC ± - 1 PLC ± - 2 PLC ± .005 3 PLC ± - 4 PLC ± - ANGLES ± - FINISH -		APVD -		HOUSING, SOCKET, 23 POSITION, METRIMATE
MATERIAL	POLYESTER, UL94V-0	PRODUCT SPEC	-	SIZE
WEIGHT		APPLICATION SPEC	-	CAGE CODE
CUSTOMER DRAWING		WEIGHT	-	DRAWING NO
SCALE		2:1	SHEET	1 OF 1
REV		B	RESTRICTED TO	