



Chipsmall Limited consists of a professional team with an average of over 10 year of expertise in the distribution of electronic components. Based in Hongkong, we have already established firm and mutual-benefit business relationships with customers from,Europe,America and south Asia,supplying obsolete and hard-to-find components to meet their specific needs.

With the principle of "Quality Parts,Customers Priority,Honest Operation,and Considerate Service",our business mainly focus on the distribution of electronic components. Line cards we deal with include Microchip,ALPS,ROHM,Xilinx,Pulse,ON,Everlight and Freescale. Main products comprise IC,Modules,Potentiometer,IC Socket,Relay,Connector.Our parts cover such applications as commercial,industrial, and automotives areas.

We are looking forward to setting up business relationship with you and hope to provide you with the best service and solution. Let us make a better world for our industry!



## Contact us

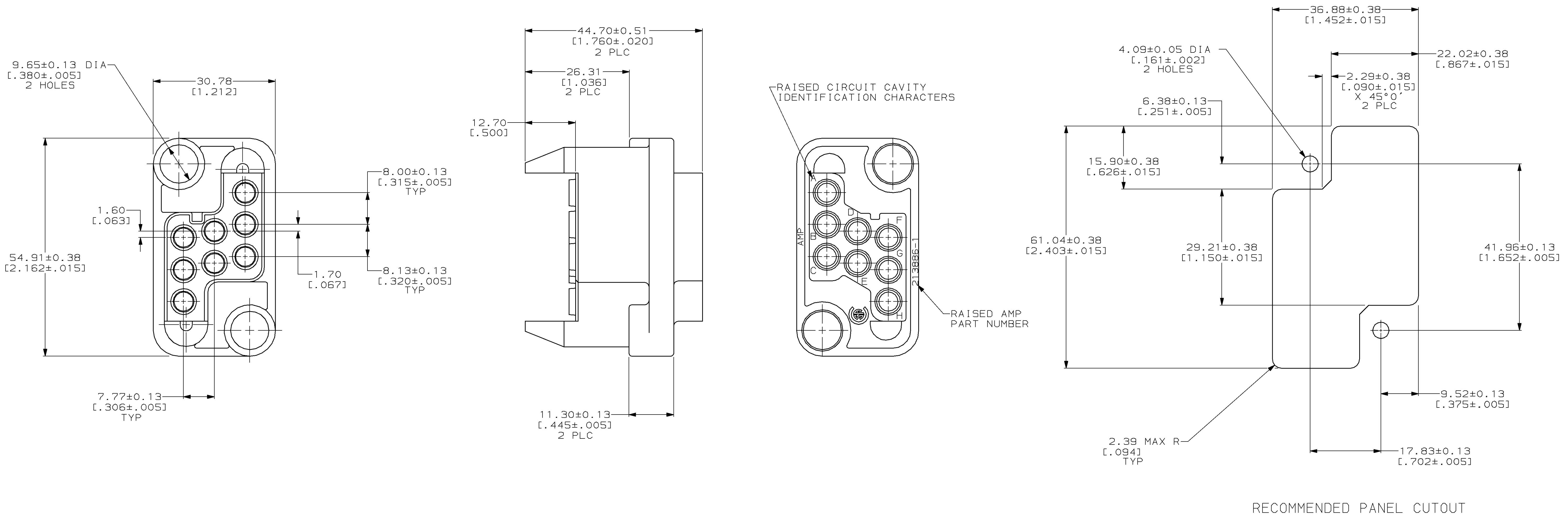
Tel: +86-755-8981 8866 Fax: +86-755-8427 6832

Email & Skype: info@chipsmall.com Web: www.chipsmall.com

Address: A1208, Overseas Decoration Building, #122 Zhenhua RD., Futian, Shenzhen, China



REVOLUTIONS		DATE	BY	APPV
0	RLSE -1 PER NPR 5364 WAS 95-5018-11-1	06/23/95	-	-
A	REV PER EC 0020-136-96	04 MAR 96	BC	MM
B	REV PER EC 0020-417-96	14 MAY 96	MB	MM



- THIS PLUG HOUSING MATES WITH RECEPTACLE HOUSING PART NUMBER 213500-3.
  - FOR MOUNTING SCREW INFORMATION SEE DRAWING 208211.
  - THIS HOUSING ACCEPTS (8) 3.18 [0.125] DIA POWERBAND SOCKET CONTACTS.
- ▲ POLYESTER, BLUE.

213886-1  
PART NUMBER

<small>THIS DRAWING IS A CONTROLLED DOCUMENT FOR AMP INCORPORATED. IT IS SUBJECT TO CHANGE AND THE CONTROLLING ENGINEERING DEPARTMENT SHALL BE CONTACTED FOR THE LATEST REVISION.</small>		DWN M. BINNER 6-28-95 CHK R. STONE 6-28-95 APPV M. McALONIS 6-28-95	AMP Incorporated Harrisburg, PA 17105-3608
DIMENSIONS: mm (INCHES)	TOLERANCES UNLESS OTHERWISE SPECIFIED: 0 PLC ±- 1 PLC ±- 2 PLC ±0.25 [.010] 3 PLC ±- 4 PLC ±- ANGLES 10°/30°	NAME HOUSING, PLUG, DRAWER CONNECTOR, 8 POSITION, METRIMATE	SIZE A1
MATERIAL ▲	FINISH -	WEIGHT -	CAGE CODE 00779
CUSTOMER DRAWING		DRAWING NO 213886	SCALE 2:1
		SHEET 1 OF 1	REV B