



Chipsmall Limited consists of a professional team with an average of over 10 year of expertise in the distribution of electronic components. Based in Hongkong, we have already established firm and mutual-benefit business relationships with customers from,Europe,America and south Asia,supplying obsolete and hard-to-find components to meet their specific needs.

With the principle of “Quality Parts,Customers Priority,Honest Operation,and Considerate Service”,our business mainly focus on the distribution of electronic components. Line cards we deal with include Microchip,ALPS,ROHM,Xilinx,Pulse,ON,Everlight and Freescale. Main products comprise IC,Modules,Potentiometer,IC Socket,Relay,Connector.Our parts cover such applications as commercial,industrial, and automotives areas.

We are looking forward to setting up business relationship with you and hope to provide you with the best service and solution. Let us make a better world for our industry!



Contact us

Tel: +86-755-8981 8866 Fax: +86-755-8427 6832

Email & Skype: info@chipsmall.com Web: www.chipsmall.com

Address: A1208, Overseas Decoration Building, #122 Zhenhua RD., Futian, Shenzhen, China



THIS DRAWING IS UNPUBLISHED. RELEASED FOR PUBLICATION
 © COPYRIGHT BY TYCO ELECTRONICS CORPORATION. ALL INTERNATIONAL RIGHTS RESERVED.

LOC FT DIST 0

REVISIONS					
P	LTR	DESCRIPTION	DATE	DWN	APVD
B		REVISED PER ECO-08-029128	22NOV08	HMR	MS
B1		REVISED PER ECO-09-020689	27AUG09	KK	AEG

#5-20 SELF TAPPING SCREW
QTY=2

$15.75^{+0.00}_{-1.27}$
 $.620^{+.000}_{-.050}$

△2 CABLE CLAMP INSERT

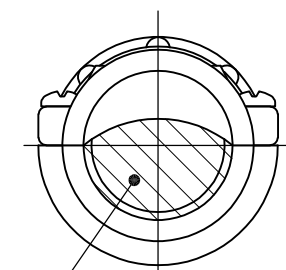
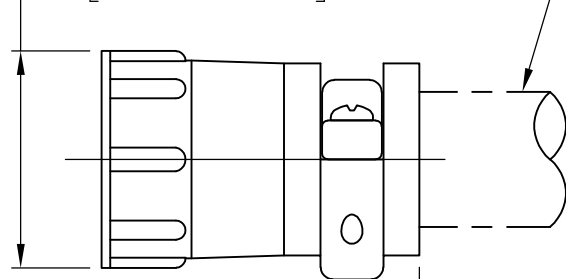
CABLE CLAMP BODY

- △1 CABLE CLAMP BODY AND INSERTS: NYLON, BLACK. SCREWS: CARBON STEEL.
- △2 CABLE CLAMPING AREA ADJUSTABLE FROM 2.54 [.100] TO 10.41 [.410] SQ AREA BY REVERSING OR CHANGING CLAMPING INSERTS.
- △3 17.86 [.703] MAXIMUM CABLE OUTSIDE DIAMETER.
- △4 SCREWS: ZINC W/ TRIVALENT CHROMATE.
- △5 OBSOLETE PARTS: OBSOLETE CIS STREAMLINING PER D.RENAUD/D.SINISI

SCREW FINISH	PACKAGING	PART NUMBER
△4	BULK	213902-4
△4	INDIVIDUAL	213902-3
△4	BULK	213902-2
△4	INDIVIDUAL	213902-1

28.73 ± 0.64
 $[1.131 \pm .025]$

CABLE SUPPLIED BY CUSTOMER △3



42.04 ± 0.76
 $[1.655 \pm .030]$

CLAMPING AREA △2

ASSEMBLED VIEW

THIS DRAWING IS A CONTROLLED DOCUMENT.		DWN D.HARDY 07/12/95	Tyco Electronics Corporation Harrisburg, PA 17105-3608		
DIMENSIONS: mm [INCHES]		CHK R.STONE 07/13/95	CABLE CLAMP KIT, LARGE, UNASSEMBLED, SIZE 17, CPC		
TOLERANCES UNLESS OTHERWISE SPECIFIED:		APVD A.FRANTUM 07/13/95	NAME		
0 PLC ± -		PRODUCT SPEC 108-1579	SIZE CAGE CODE DRAWING NO RESTRICTED TO		
1 PLC ± -		APPLICATION SPEC	A3 00779 C-213902		
2 PLC ± -		WEIGHT -	SCALE NTS SHEET 1 OF 1 REV B1		
3 PLC ± -		CUSTOMER DRAWING			
4 PLC ± -					
ANGLES ± -					
FINISH -					
MATERIAL △1					