



Chipsmall Limited consists of a professional team with an average of over 10 year of expertise in the distribution of electronic components. Based in Hongkong, we have already established firm and mutual-benefit business relationships with customers from,Europe,America and south Asia,supplying obsolete and hard-to-find components to meet their specific needs.

With the principle of “Quality Parts,Customers Priority,Honest Operation,and Considerate Service”,our business mainly focus on the distribution of electronic components. Line cards we deal with include Microchip,ALPS,ROHM,Xilinx,Pulse,ON,Everlight and Freescale. Main products comprise IC,Modules,Potentiometer,IC Socket,Relay,Connector.Our parts cover such applications as commercial,industrial, and automotives areas.

We are looking forward to setting up business relationship with you and hope to provide you with the best service and solution. Let us make a better world for our industry!



Contact us

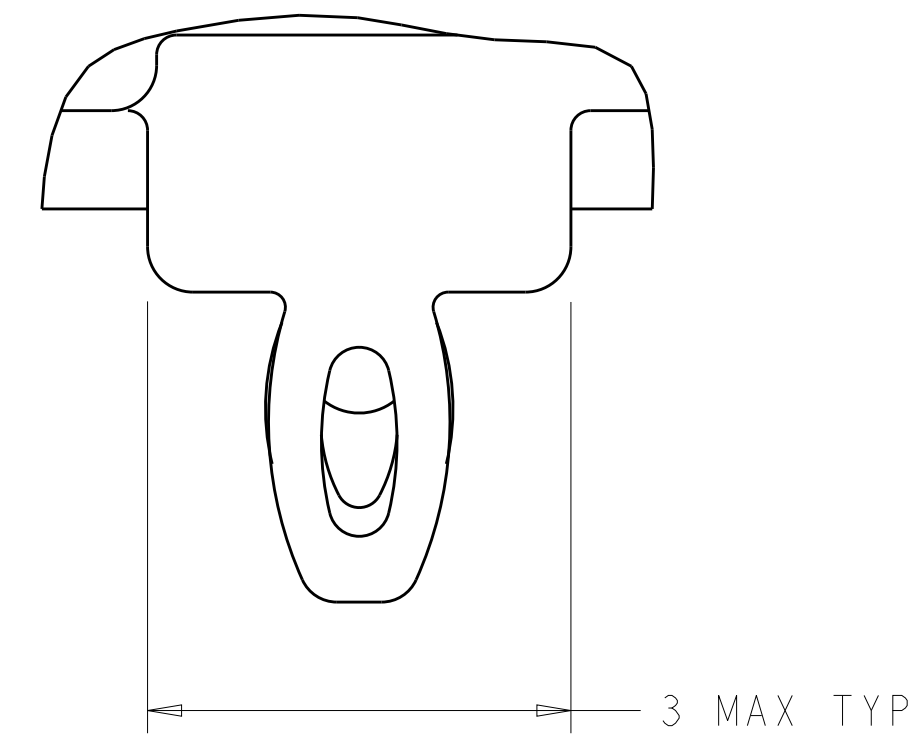
Tel: +86-755-8981 8866 Fax: +86-755-8427 6832

Email & Skype: info@chipsmall.com Web: www.chipsmall.com

Address: A1208, Overseas Decoration Building, #122 Zhenhua RD., Futian, Shenzhen, China



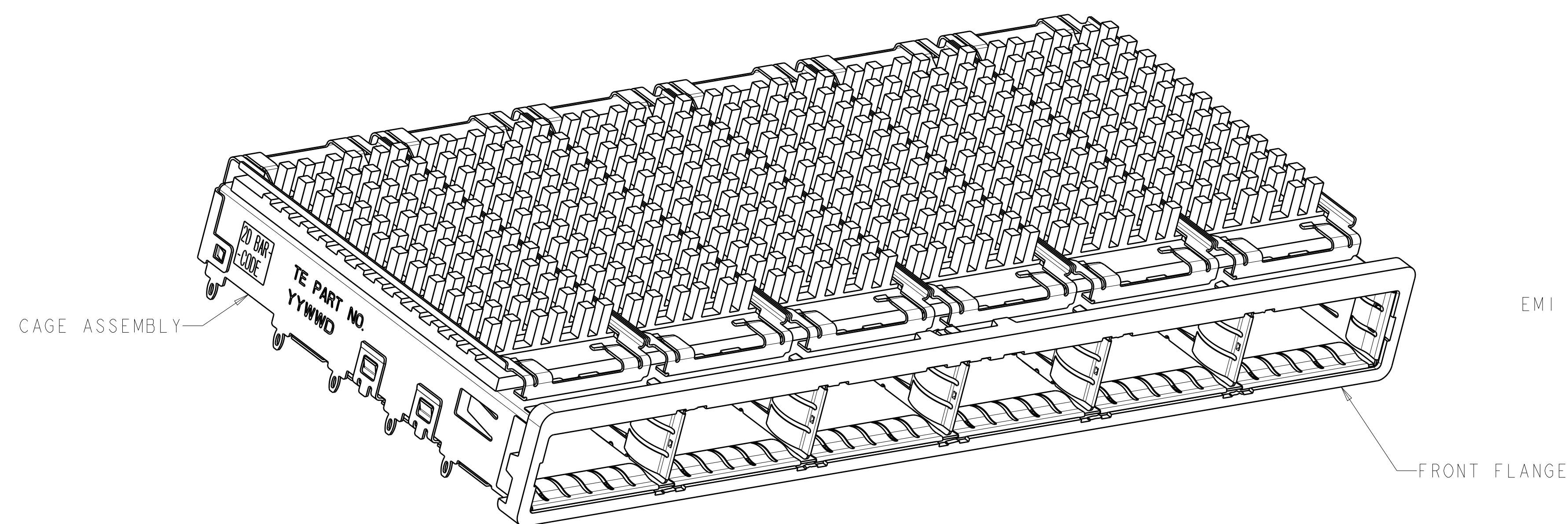
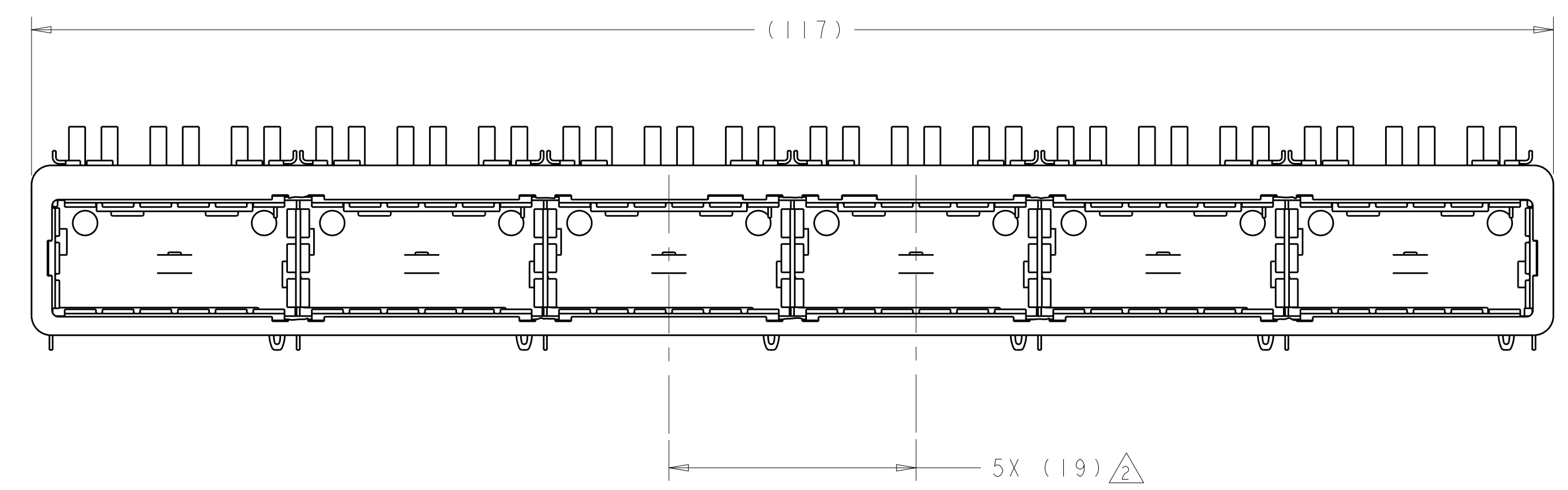
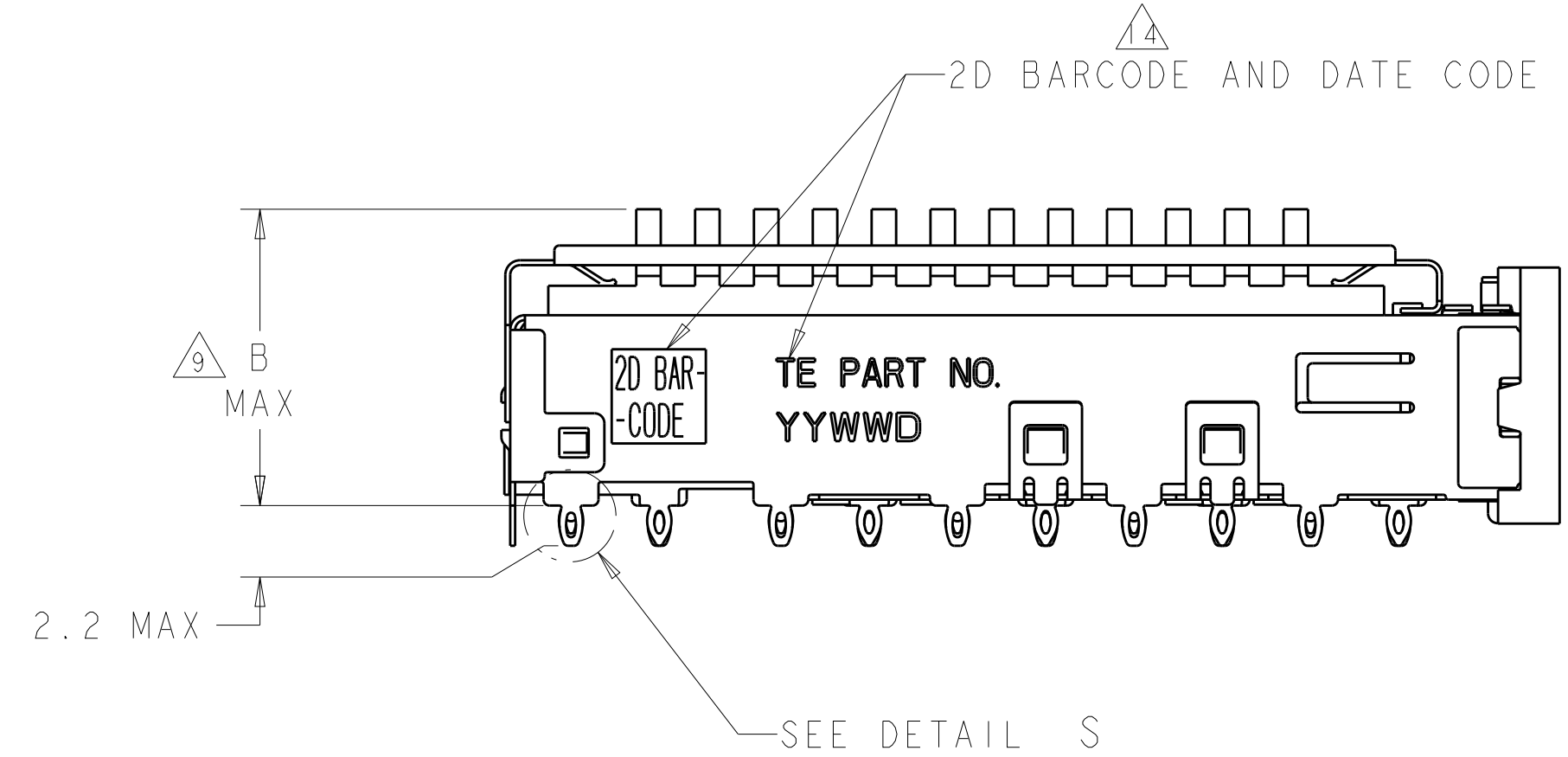
LOC	DIST	REVISIONS					
		P	LTN	DESCRIPTION	DATE	DWN	APVD
GP	00	4		UPDATED VIEWS	30MAR2011	AL	CW
		5		REVISED PER ECO-12-003841	14MAR2012	TY	KS
		6		REVISED PER ECO-12-005533	05APR2012	JY	AC
		A		REVISED PER ECO-15-000148	10APR2015	RG	MC



DETAIL S
 SCALE 20:1

- 1. CAGE ASSEMBLY MATERIAL: NICKEL SILVER, 0.25 THICK
 HEAT SINK MATERIAL: ALUMINUM
 HEAT SINK CLIP MATERIAL: STAINLESS STEEL
 EMI SPRING MATERIAL: COPPER ALLOY
 FRONT FLANGE MATERIAL: ZINC ALLOY
- 2. PITCH BETWEEN PORTS OF ONE 1X6 CAGE ASSEMBLY.
- 3. SPACING BETWEEN CAGES ON THE SAME PC BOARD, TO BE SPECIFIED BY CUSTOMER, MUST COMPLY WITH MINIMUM DIMENSIONS SHOWN.
- 4. REFERENCE APPLICATION SPEC 114-13218 FOR RECOMMENDED DRILL HOLE DIAMETER AND PLATING THICKNESS.
- 5. DATUMS AND BASIC DIMENSIONS ESTABLISHED BY CUSTOMER.
- 6. DIMENSION F IS THE NOMINAL THICKNESS OF CUSTOMER SUPPLIED PC BOARD,
 SINGLE SIDED PC BOARD MINIMUM THICKNESS = 1.45mm
 DOUBLE SIDED PC BOARD MINIMUM THICKNESS = 2.2mm PER QSFP.
- 7. HEAT SINKS AND HEAT SINK CLIPS SHIPPED ASSEMBLED TO CAGE ASSEMBLY.
 CAGE ASSEMBLY MAY BE PRESSED INTO THE PCB AS SHIPPED.
- 8. DATUM A IS TOP SURFACE OF PC BOARD.
- 9. DIMENSION APPLIES WITH MODULE INSERTED IN CAGE.
- 10. UNPLATED THRU HOLE.
- 11. MATES WITH QSFP MSA COMPATIBLE TRANSCEIVER.
- 12. SURFACE TRACES PERMITTED WITHIN THIS AREA EXCEPT WHERE CAGE STANDOFFS, SHOWN IN DETAIL S, CONTACT PC BOARD.
- 13. BASELINE FOR THESE DIMENSIONS IS THE CENTER OF COMPLIANT PIN HOLE.
- 14. 2D BARCODE AND DATE CODE (YYWW) MARKED ON SIDE OF CAGE.

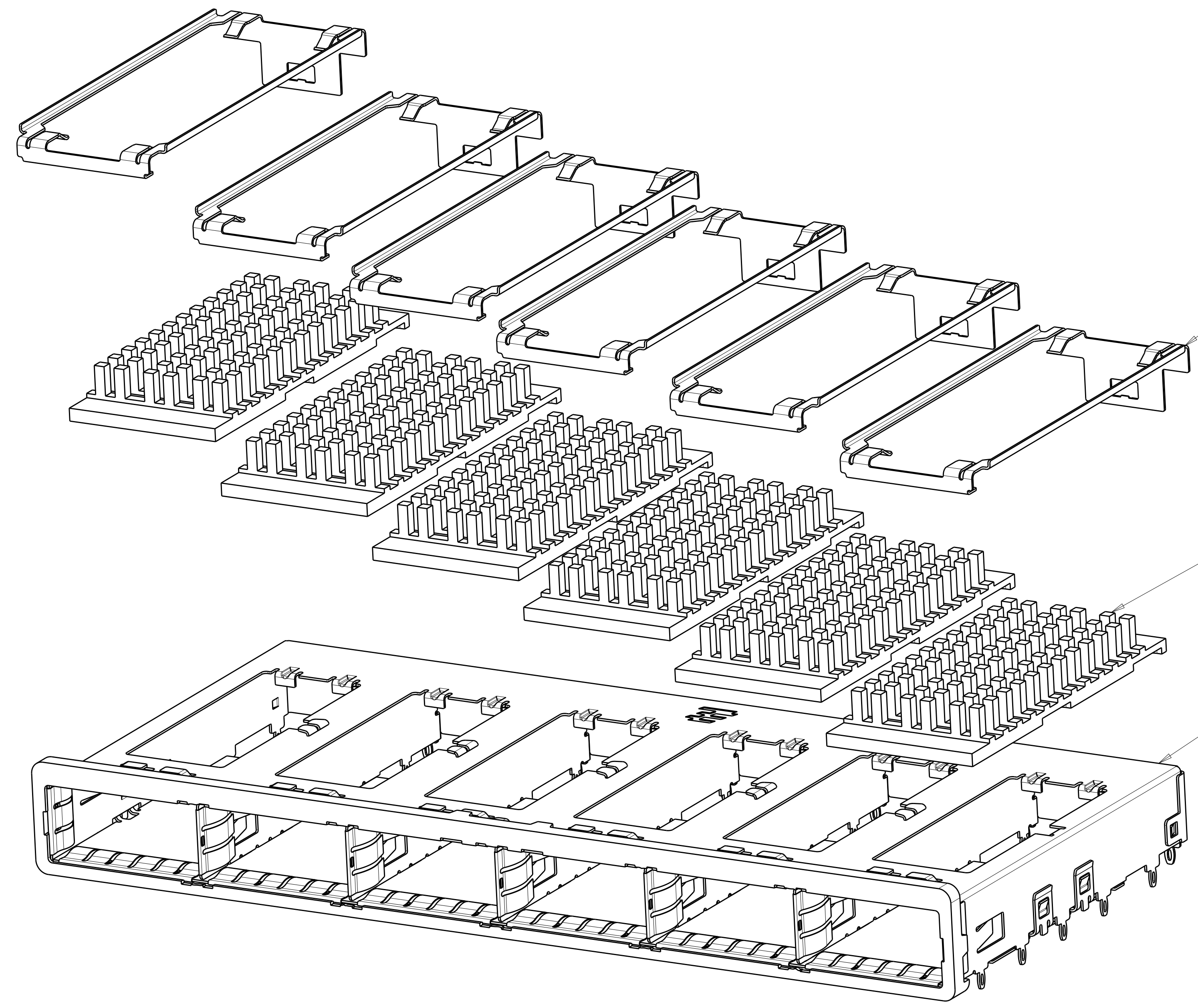
- 15. REFERENCE APP SPEC 114-13218 FOR GASKET THICKNESS CALCULATION.
- 16. EMI SPRING FINISH: 2um MINIMUM TIN
 FRONT FLANGE FINISH: 3um MINIMUM TIN OVER 1.27um MINIMUM NICKEL
 OVER 5.08um MINIMUM COPPER.
 HEAT SINK FINISH: NICKEL



23.0	NETWORKING	2143330-3
16.0	SAN	2143330-2
13.7	PCI	2143330-1
B	HEAT SINK PROFILE	PART NUMBER

THIS DRAWING IS A CONTROLLED DOCUMENT.		DWN C. VALENTINE 17MAR2010	TE Connectivity	
DIMENSIONS:		CHK J. PETERSON 17MAR2010	NAME 1X6 CAGE ASSEMBLY, BEHIND BEZEL, W/ HEAT SINKS, QSFP	
TOLERANCES UNLESS OTHERWISE SPECIFIED:		APVD J. PETERSON 17MAR2010	PRODUCT SPEC 108-2286	
mm		PRODUCT SPEC 114-13218	APPLICATION SPEC	
0 PLC	±	WEIGHT	SIZE CAGE CODE DRAWING NO A100779C=2143330	
1 PLC	±0.1	RESTRICTED TO	-	
2 PLC	±0.1	Customer Drawing	SCALE 3:1 SHEET 1 OF 5 REV A	
3 PLC	±			
4 PLC	±			
ANGLES	±			
FINISH	16			


LOC	DIST	REVISIONS			
P	LYR	DESCRIPTION	DATE	DWN	APVD
-	-	SEE SHEET 1	-	-	-



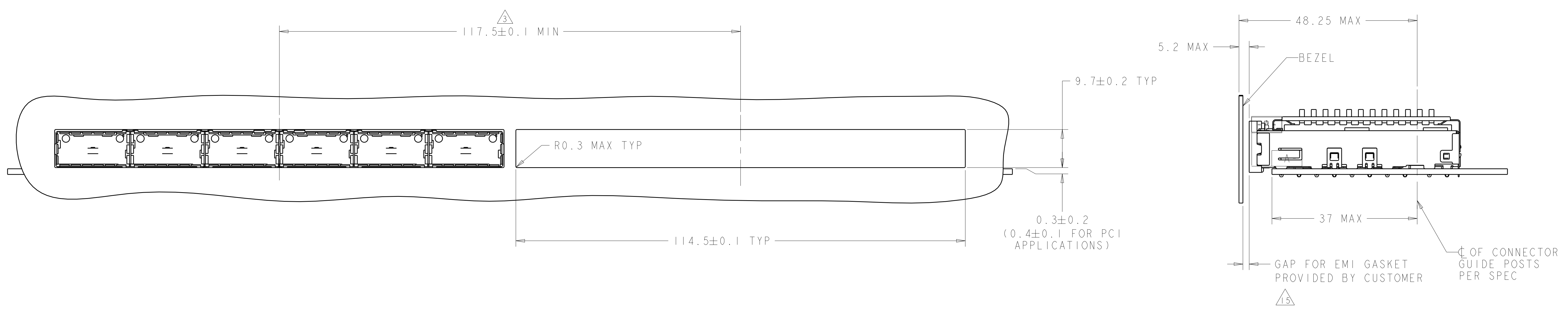
HEAT SINK CLIPS
 QUANTITY: 6

72 PIN HEAT SINKS
 QUANTITY: 6

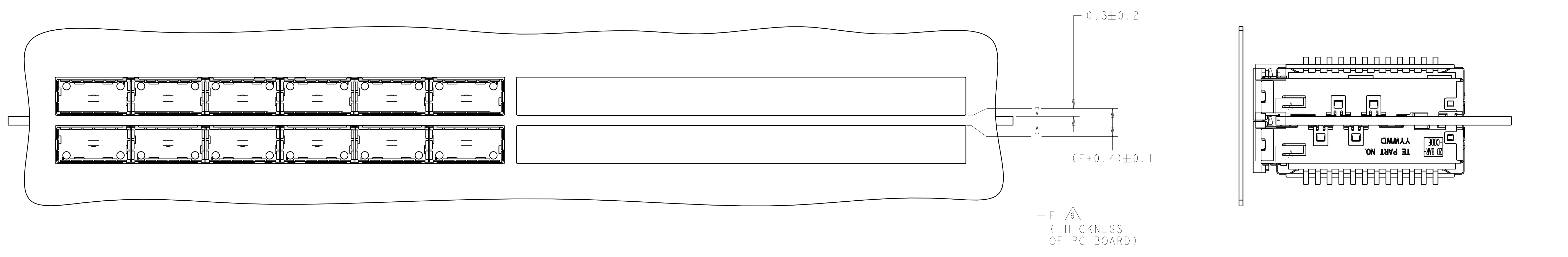
1X6 BEHIND BEZEL QSFP
 CAGE ASSEMBLY
 QUANTITY: 1

THIS DRAWING IS A CONTROLLED DOCUMENT.		DWN C. VALENTINE 17MAR2010	 TE Connectivity
DIMENSIONS: mm		CHK J. PETERSON 17MAR2010	
TOLERANCES UNLESS OTHERWISE SPECIFIED: 0 PLC ± 1 PLC ±0.1 2 PLC ±0.1 3 PLC ± 4 PLC ± ANGLES ± FINISH		APVD J. PETERSON 17MAR2010	NAME 1X6 CAGE ASSEMBLY, BEHIND BEZEL, W/ HEAT SINKS, QSFP
MATERIAL		PRODUCT SPEC 108-2286	RESTRICTED TO
		APPLICATION SPEC 114-13218	SIZE CAGE CODE DRAWING NO A100779C=2143330
		WEIGHT	SCALE 3:1 SHEET 2 OF 5 REV A
		Customer Drawing	

LOC	DIST	REVISIONS			
GP	00	REV	DATE	BY	APPD
-	-	SEE SHEET 1	-	-	-



ONE SIDED CONFIGURATION
 SCALE 2:1

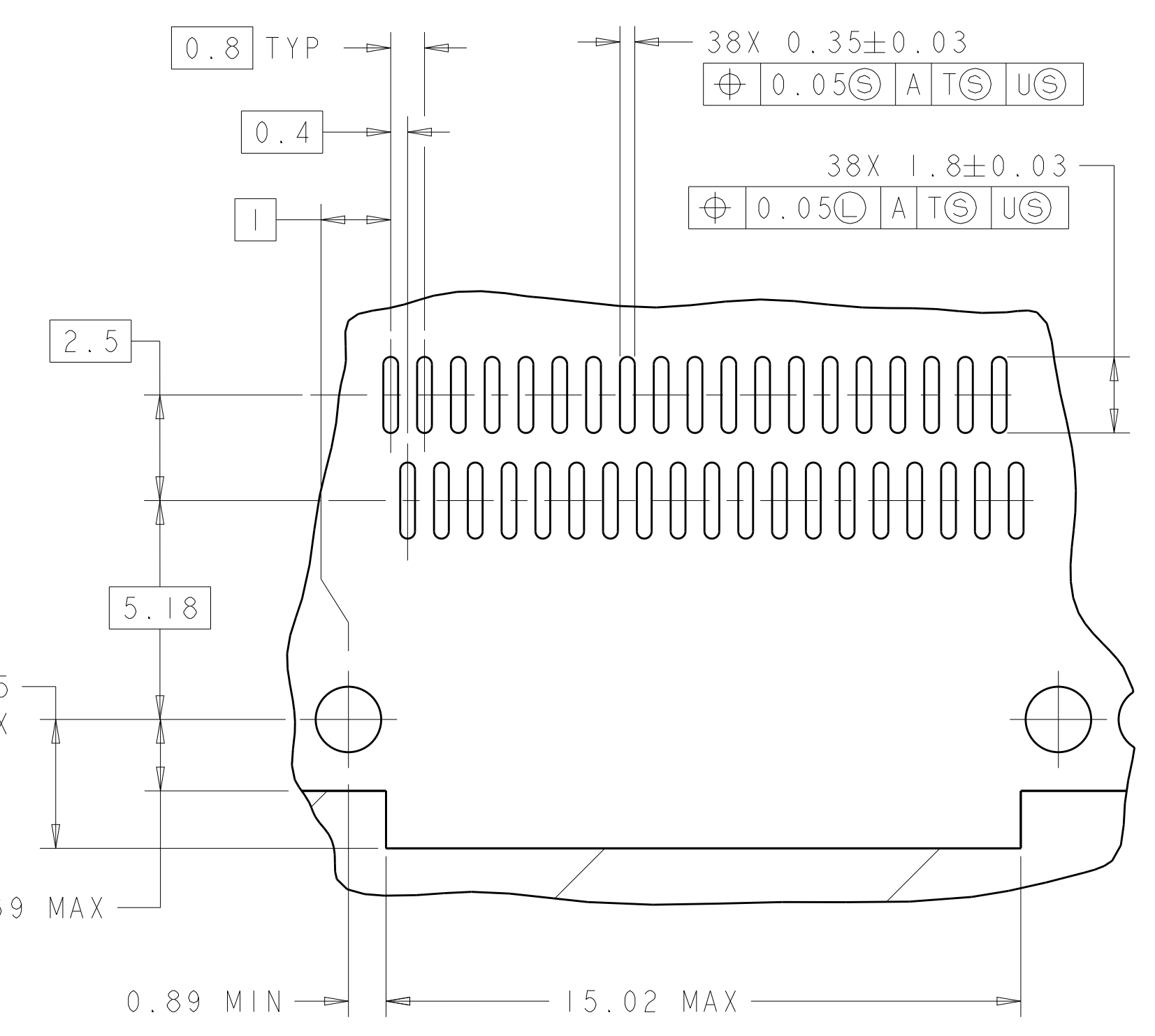
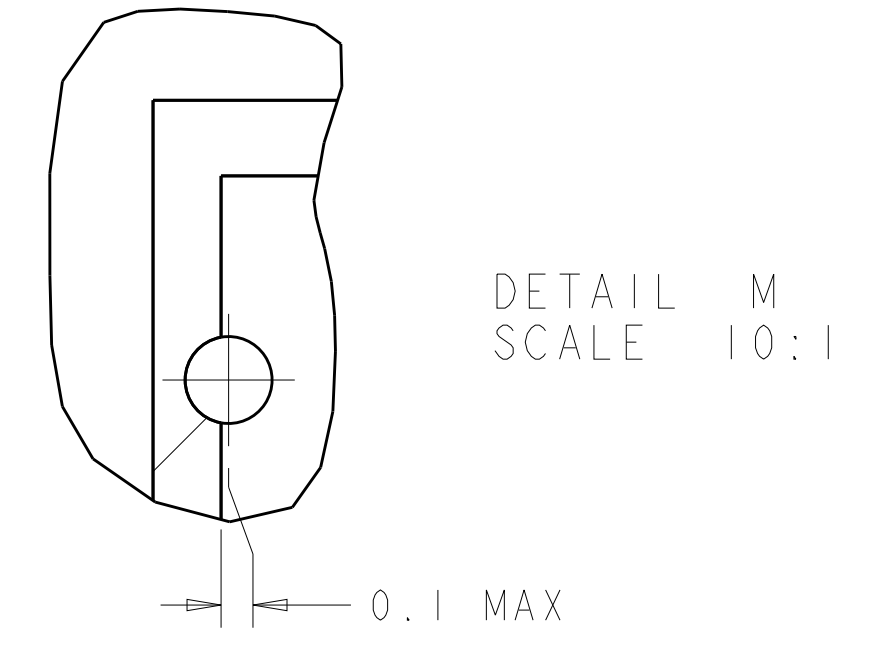
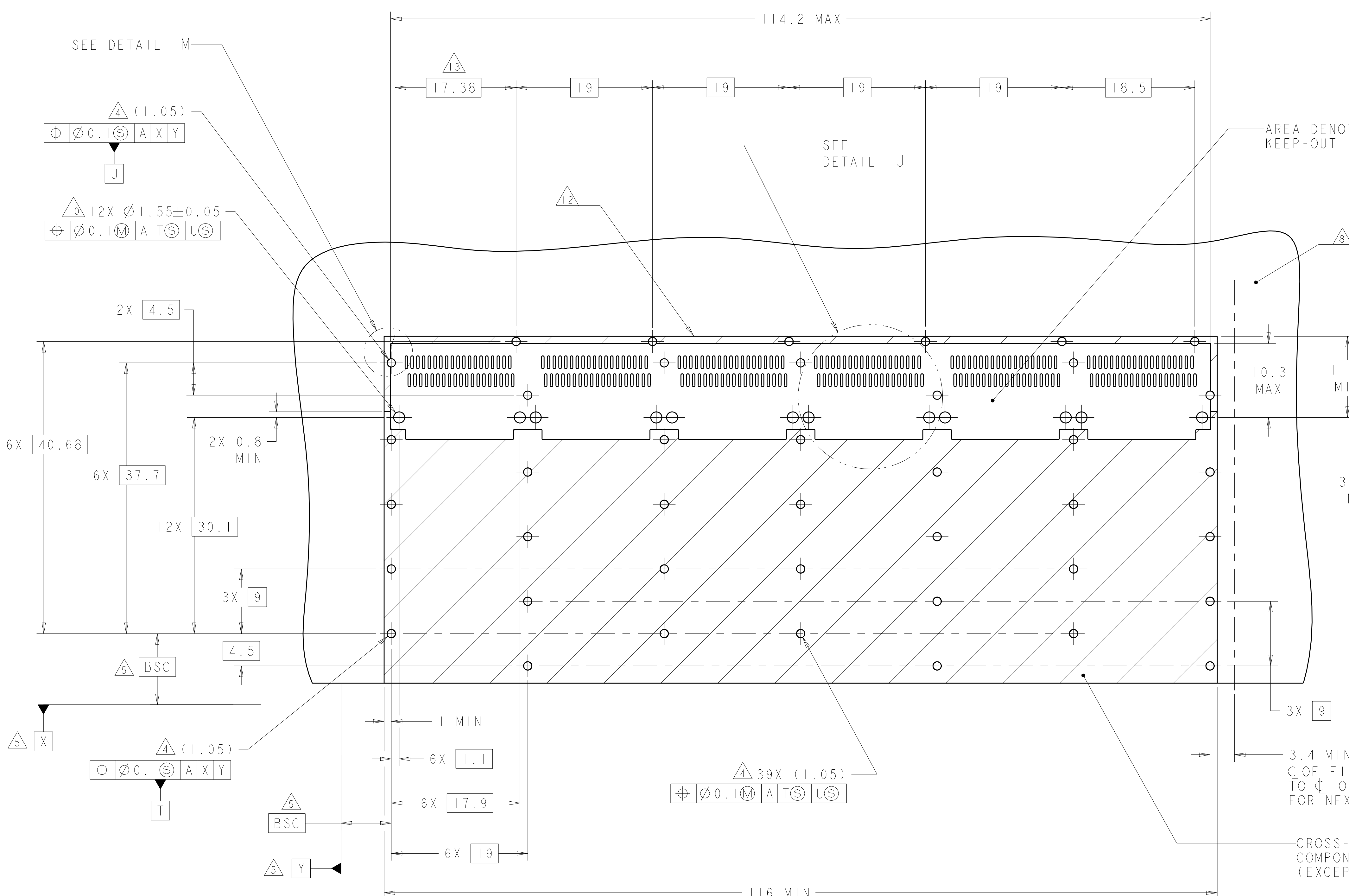


BELLY TO BELLY CONFIGURATION
 SIMILAR TO ONE SIDED
 EXCEPT WHERE NOTED
 SCALE 2:1

THIS DRAWING IS A CONTROLLED DOCUMENT.		DWN C. VALENTINE 17MAR2010 CHK J. PETERSON 17MAR2010 APVD J. PETERSON 17MAR2010	STE TE Connectivity	
DIMENSIONS: mm 	TOLERANCES UNLESS OTHERWISE SPECIFIED: 0 PLC ± 1 PLC ±0.1 2 PLC ±0.1 3 PLC ± 4 PLC ± ANGLES ± FINISH	NAME 1X6 CAGE ASSEMBLY, BEHIND BEZEL, W/ HEAT SINKS, QSFP PRODUCT SPEC 108-2286 APPLICATION SPEC 114-13218 WEIGHT Customer Drawing	SIZE A1 CAGE CODE 00779 DRAWING NO. C=2143330	RESTRICTED TO SCALE 3:1 SHEET 3 OF 5 REV A

LOC	DIST	REV	DATE	BY	APPV
GP	00				

REVISIONS			
NO.	DESCRIPTION	DATE	BY
-	SEE SHEET 1	-	-

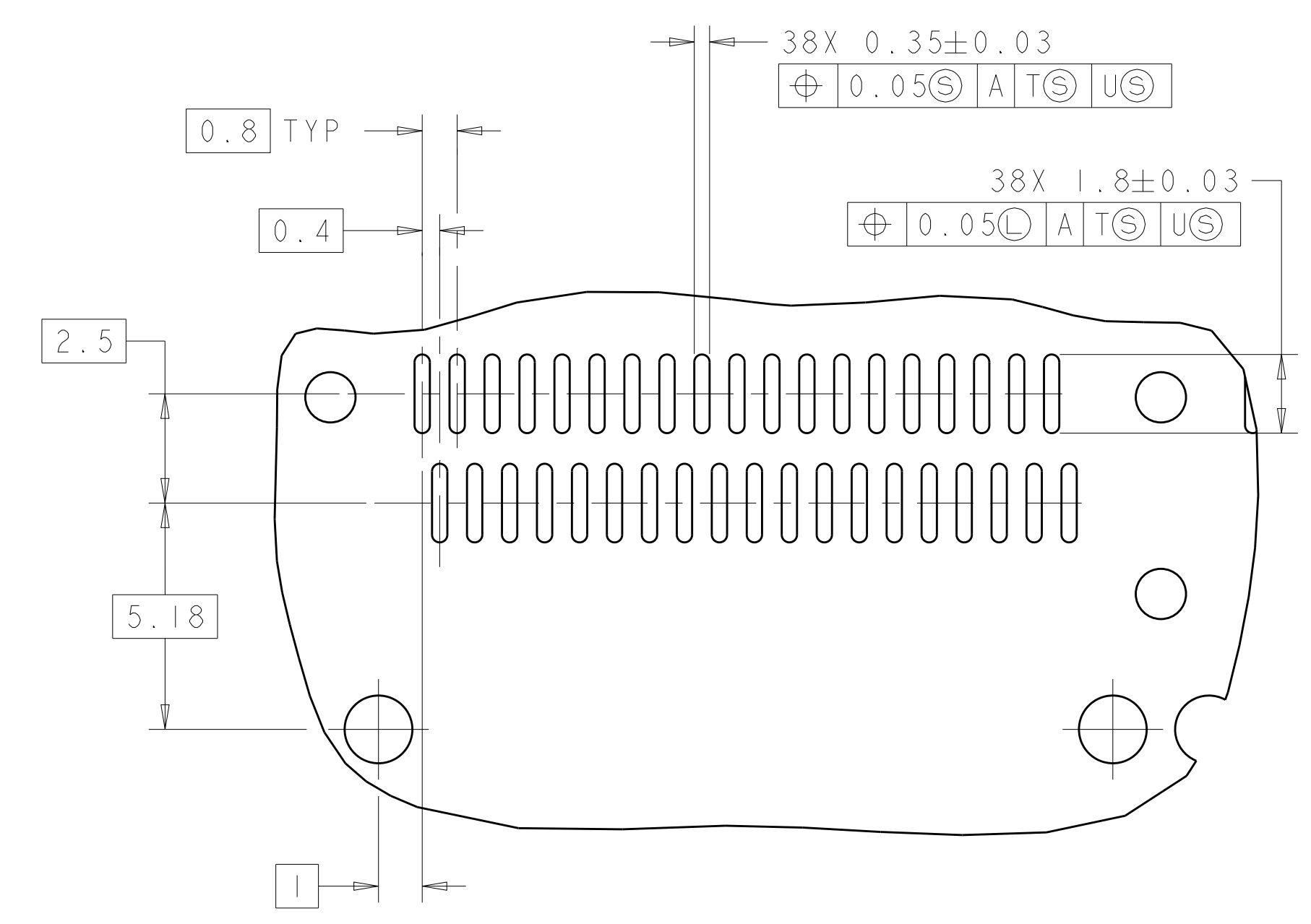
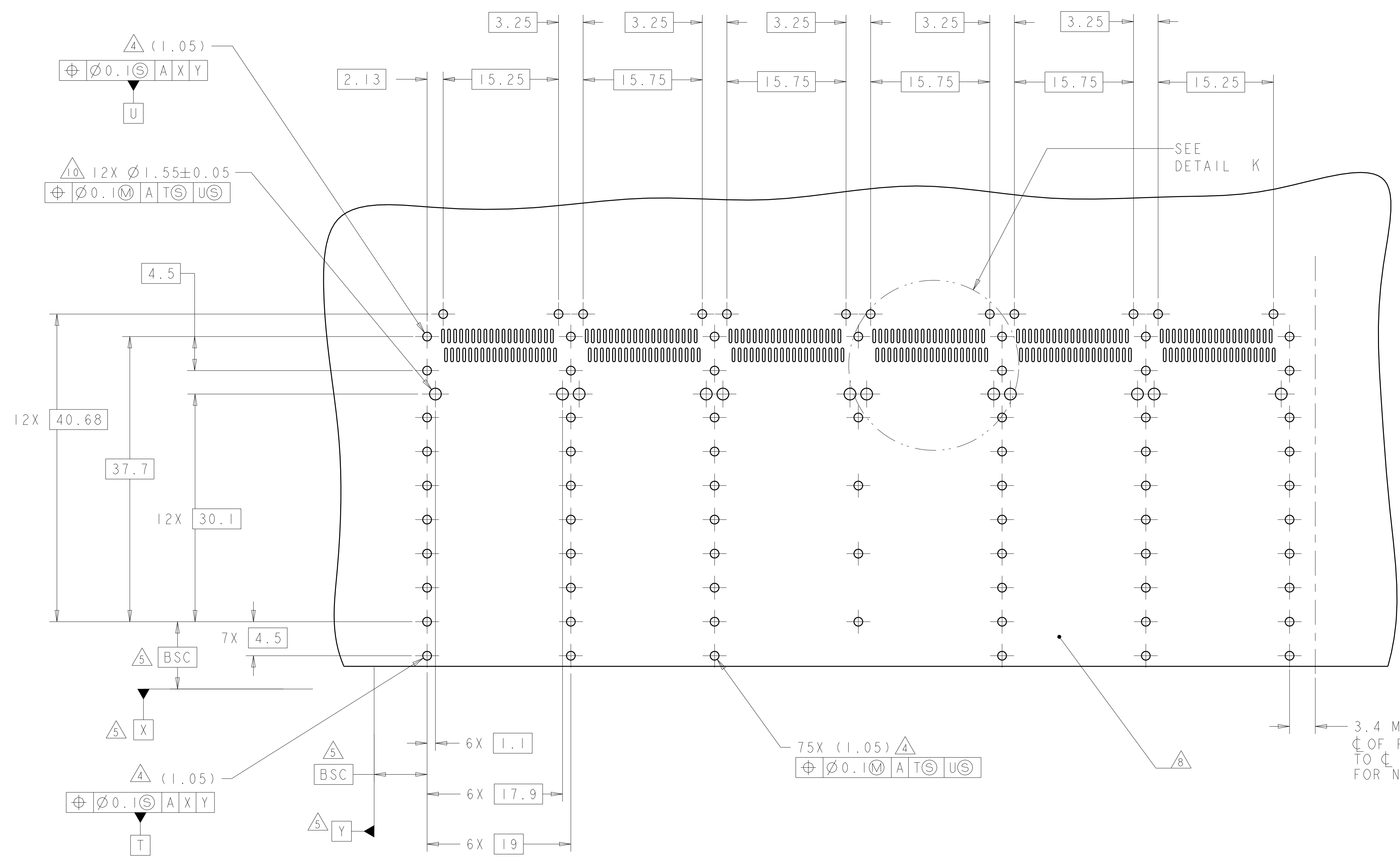


RECOMMENDED PC BOARD LAYOUT
 SINGLE SIDE MOUNT CONFIGURATION
 SCALE 3:1

CROSS-HATCHED AREA DENOTES
 COMPONENT AND TRACE KEEP-OUT
 (EXCEPT CHASSIS GROUND)

THIS DRAWING IS A CONTROLLED DOCUMENT.		DWN C. VALENTINE 17MAR2010	TE Connectivity
DIMENSIONS:		CHK J. PETERSON 17MAR2010	
mm	TOLERANCES UNLESS OTHERWISE SPECIFIED:	APVD J. PETERSON 17MAR2010	NAME 1X6 CAGE ASSEMBLY, BEHIND BEZEL, W/ HEAT SINKS, QSFP
0 PLC ± 1 PLC ±0.1 2 PLC ±0.1 3 PLC ± 4 PLC ± ANGLES ±		PRODUCT SPEC 108-2286	SIZE A100779
MATERIAL	FINISH	APPLICATION SPEC 114-13218	RESTRICTED TO
		WEIGHT	SCALE 4:1 SHEET 4 OF 5 REV A
		Customer Drawing	

LOC	DIST	REVISIONS					
GP	00	P	LTN	DESCRIPTION	DATE	DMN	APVD
		-		SEE SHEET 1	-	-	-



DETAIL K
 6 PLACES
 SCALE 8:1

RECOMMENDED PC BOARD LAYOUT
 BELLY TO BELLY CONFIGURATION
 SEE SHEET 4 FOR COMPONENT AND TRACE KEEP-OUTS
 SCALE 3:1

THIS DRAWING IS A CONTROLLED DOCUMENT.		DMN C. VALENTINE 17MAR2010	TE Connectivity NAME 1X6 CAGE ASSEMBLY, BEHIND BEZEL, W/ HEAT SINKS, QSFP
DIMENSIONS:		CHK J. PETERSON 17MAR2010	
mm	TOLERANCES UNLESS OTHERWISE SPECIFIED:	APVD J. PETERSON 17MAR2010	PRODUCT SPEC
0 PLC ±.1 2 PLC ±0.1 3 PLC ±.1 4 PLC ±.1 ANGLES ±.1		APPLICATION SPEC	108-2286
MATERIAL	FINISH	WEIGHT	114-13218
		Customer Drawing	SCALE 4:1 SHEET 5 OF 5 REV A