



Chipsmall Limited consists of a professional team with an average of over 10 year of expertise in the distribution of electronic components. Based in Hongkong, we have already established firm and mutual-benefit business relationships with customers from,Europe,America and south Asia,supplying obsolete and hard-to-find components to meet their specific needs.

With the principle of "Quality Parts,Customers Priority,Honest Operation,and Considerate Service",our business mainly focus on the distribution of electronic components. Line cards we deal with include Microchip,ALPS,ROHM,Xilinx,Pulse,ON,Everlight and Freescale. Main products comprise IC,Modules,Potentiometer,IC Socket,Relay,Connector.Our parts cover such applications as commercial,industrial, and automotives areas.

We are looking forward to setting up business relationship with you and hope to provide you with the best service and solution. Let us make a better world for our industry!



Contact us

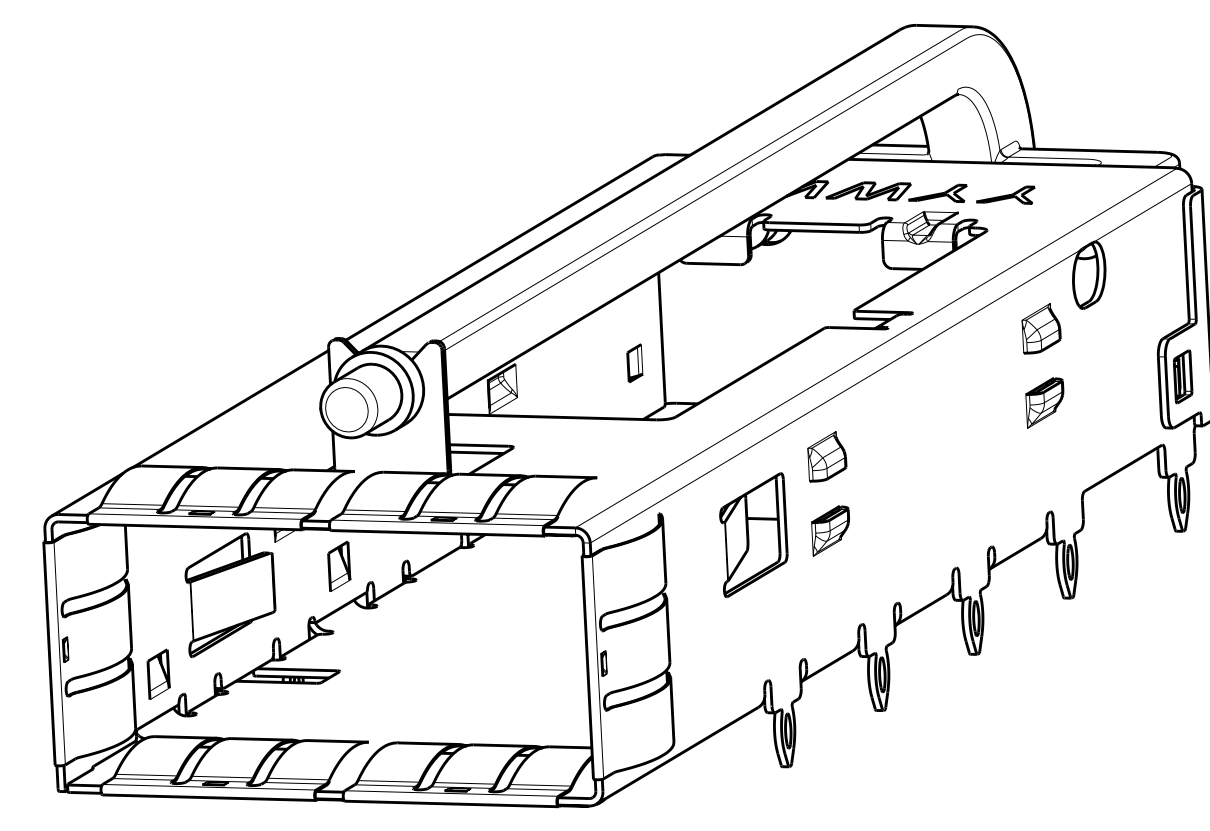
Tel: +86-755-8981 8866 Fax: +86-755-8427 6832

Email & Skype: info@chipsmall.com Web: www.chipsmall.com

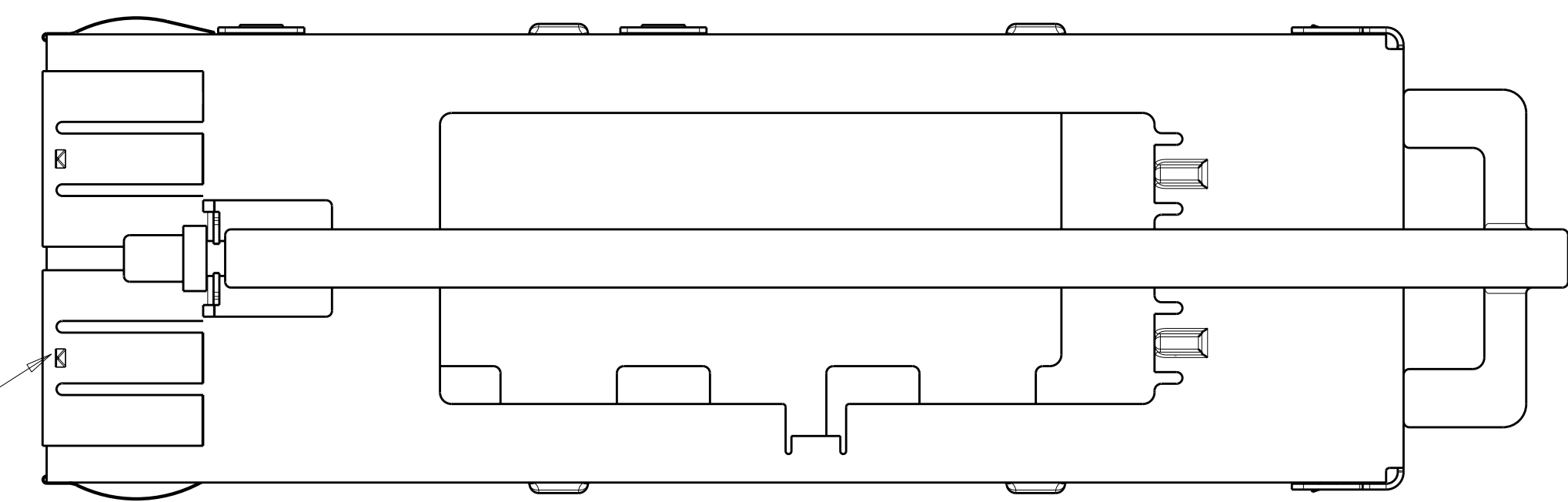
Address: A1208, Overseas Decoration Building, #122 Zhenhua RD., Futian, Shenzhen, China



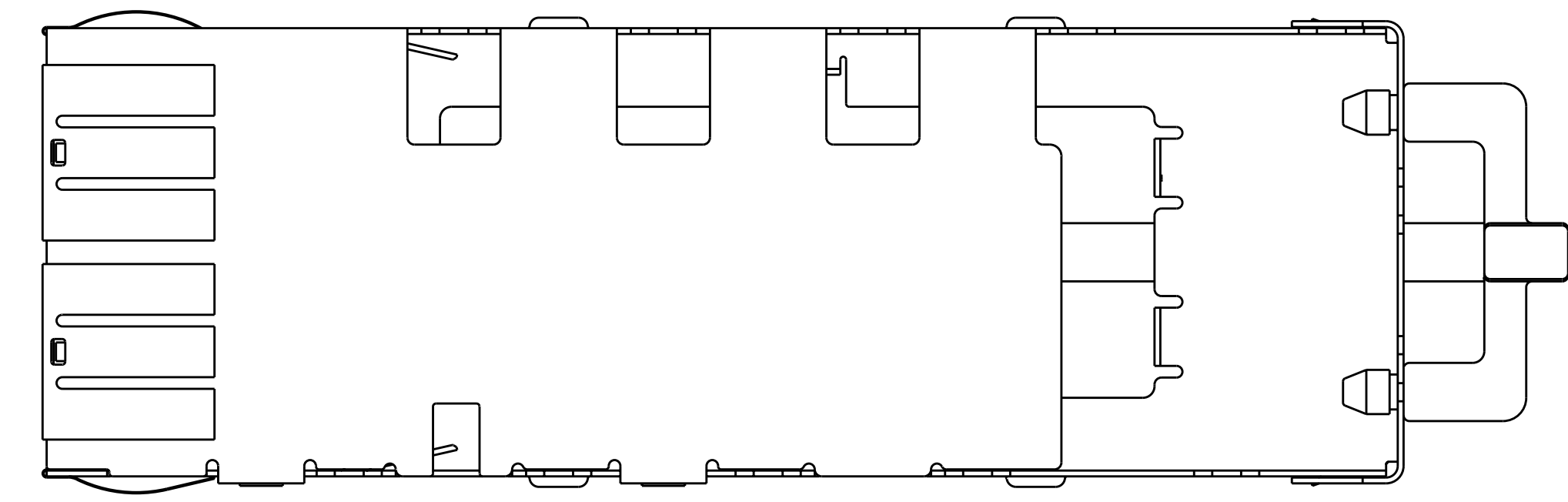
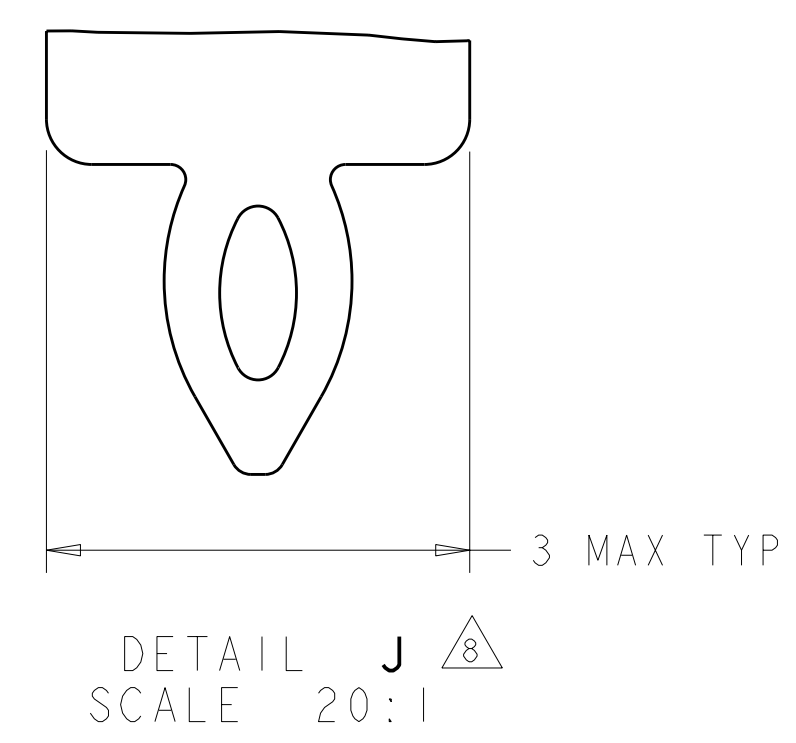
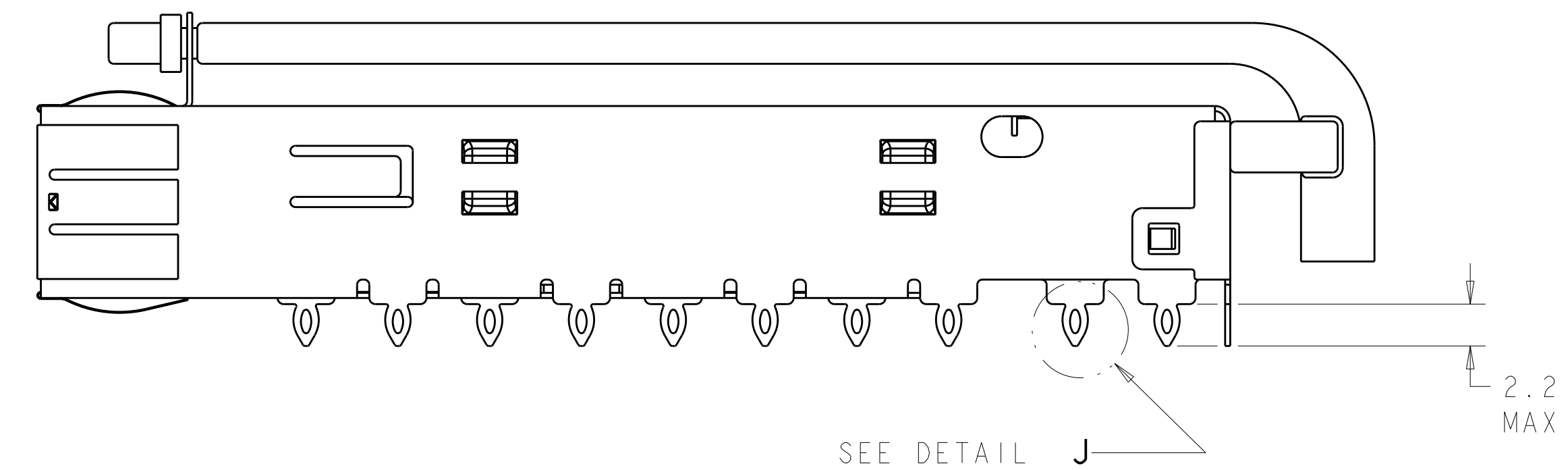
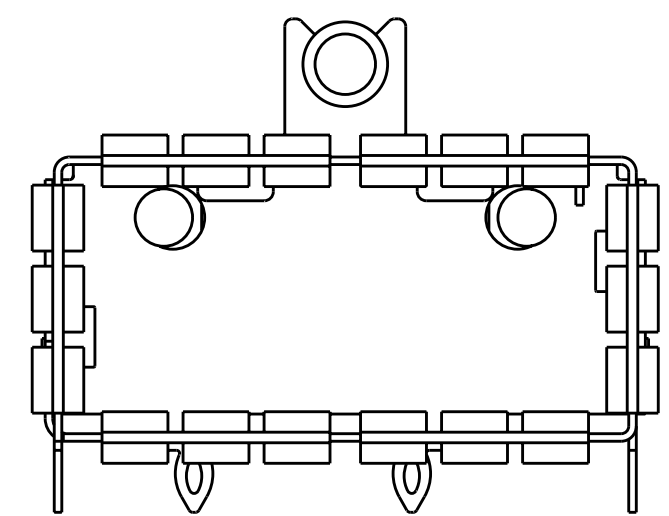
LOC	DIST	REV	DATE	BY	APPD
GP	00	1	31MAR2010	CJV	JRP



Sn42Bi58 SOLDER
6 PLACES



- 1. CAGE MATERIAL: NICKEL SILVER, 0.25 THICK
 LIGHT PIPE MATERIAL: CLEAR POLYCARBONATE, UL-94V-2 RATED.
 EMI SPRING MATERIAL: COPPER ALLOY
- 2. MINIMUM PITCH DIMENSION.
- 3. MATES WITH QSFP MSA COMPATIBLE TRANSCEIVER.
- 4. REFERENCE APPLICATION SPEC 114-13217 FOR RECOMMENDED DRILL HOLE DIAMETER AND PLATING THICKNESS.
- 5. DATUMS AND BASIC DIMENSIONS ESTABLISHED BY CUSTOMER.
- 6. MINIMUM PC BOARD THICKNESS:
 SINGLE SIDED = 1.45mm (shown, pg. 4)
 DOUBLE SIDED = 2.2mm
- 7. DATUM **-A-** IS TOP SURFACE OF HOST BOARD.
- 8. SURFACE TRACES PERMITTED WITHIN THIS AREA EXCEPT WHERE CAGE STANDOFFS, SHOWN IN DETAIL J, CONTACT PC BOARD.
- 9. MAXIMUM HEIGHT OF CUSTOMER SUPPLIED LED OFF PC BOARD: 1.70mm.
- 10. DATE CODE (YYWWD) MARKED ON TOP OF CAGE APPLIES TO CAGE ASSEMBLY ONLY.
- 11. SPRING FINISH: 0.8µm MIN TIN OVER 0.8µm MIN NICKEL. NON-PLATED EDGES PERMISSIBLE.
- 12. PRODUCT HAS NOT COMPLETED QUALIFICATION TESTING.
- 13. CAGE ASSEMBLY MAY BE PRESSED INTO THE PCB AS SHIPPED. LIGHT PIPE MUST BE ASSEMBLED BY CUSTOMER AFTER THE CAGE IS SEATED ON THE PCB.

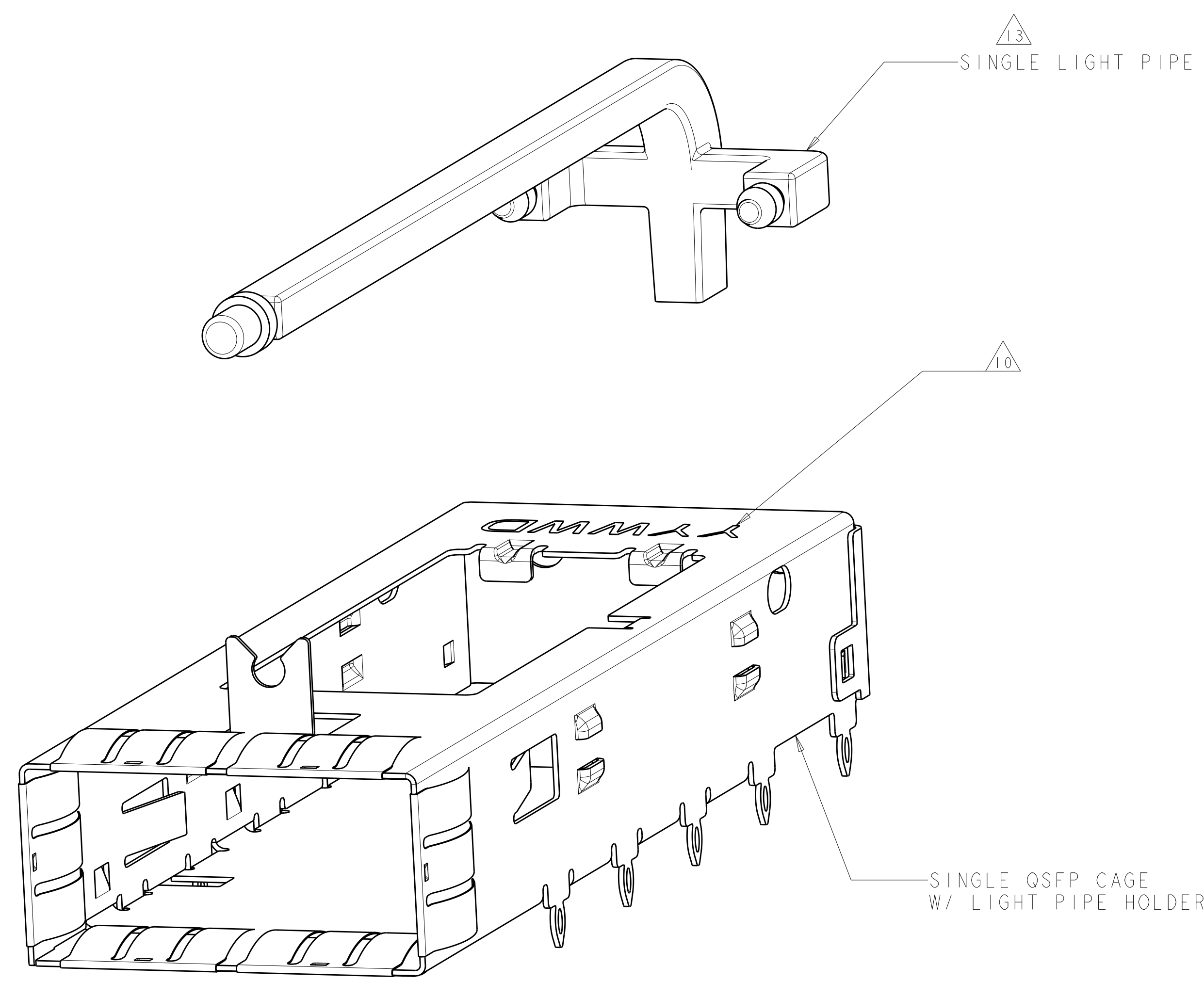


THIS PRINT IS
PRELIMINARY
 UNQUALIFIED PRODUCT
 CONTACT PRODUCT ENGINEERING
 BEFORE USING THIS PRINT

2143432-1
PART NUMBER

DIMENSIONS: mm 		TOLERANCES UNLESS OTHERWISE SPECIFIED: 9 PLC ±.5 7 PLC ±0.13 5 PLC ±0.013 4 PLC ±0.0001 ANGLES ±.1		DWN C. VALENTINE 31MAR2010 CHK J. PETERSON 31MAR2010 APVD J. PETERSON 31MAR2010		Tyco Electronics Harrisburg, PA 17105-3608	
MATERIAL 		FINISH 		PRODUCT SPEC 108-2286 APPLICATION SPEC 114-13217 WEIGHT - CUSTOMER DRAWING		NAME CAGE ASSEMBLY, THRU BEZEL, QSFP, W/ SINGLE LIGHT PIPE SIZE CAGE CODE DRAWING NO. A100779C=2143432 RESTRICTED TO	
SCALE 4:1 SHEET 1 OF 4 REV				2143432-1 PART NUMBER			

LOC	DIST	REVISIONS			
P	LTB	DESCRIPTION	DATE	DWN	APVD
-	-	SEE SHEET 1	-	-	-

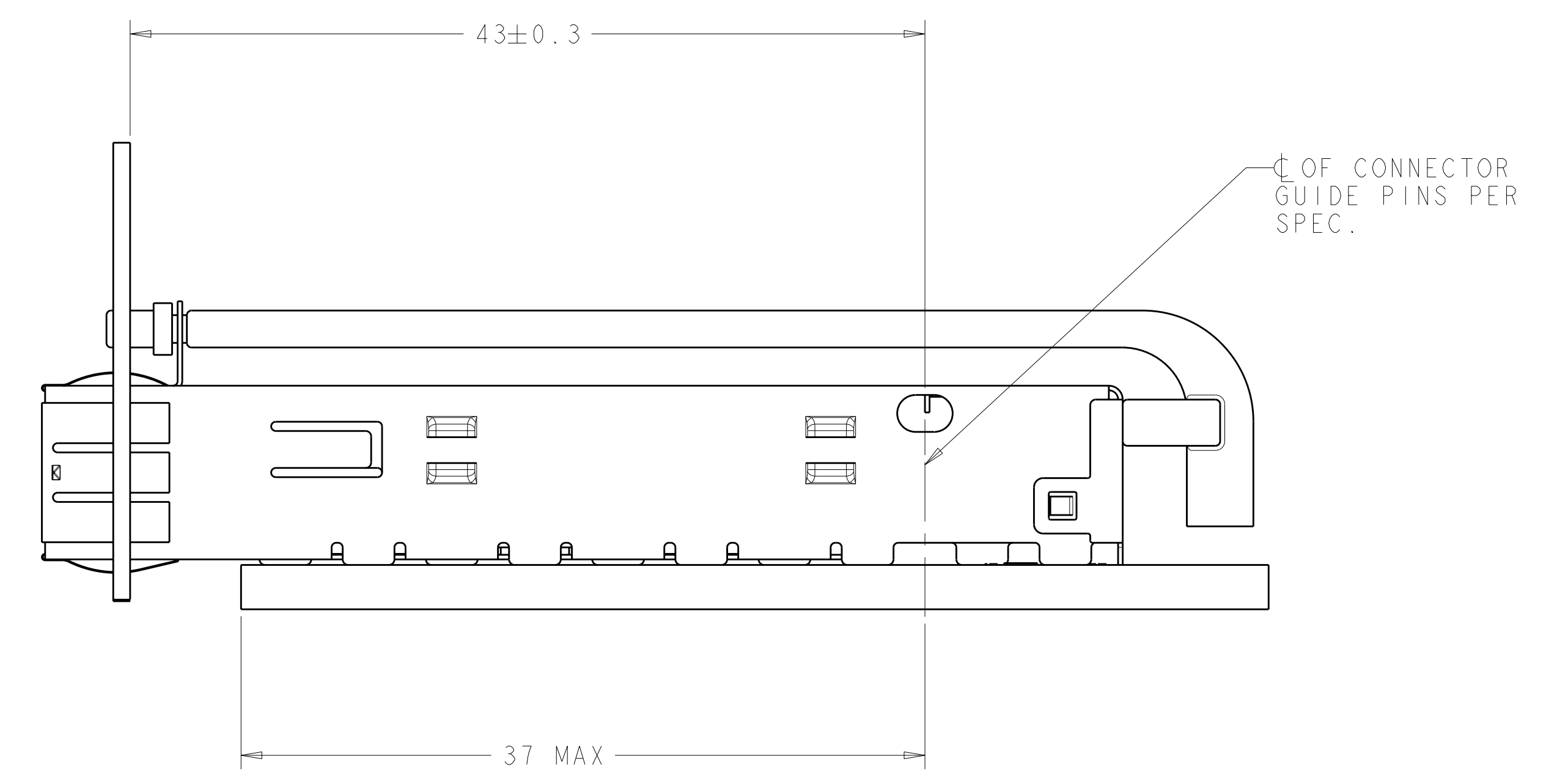
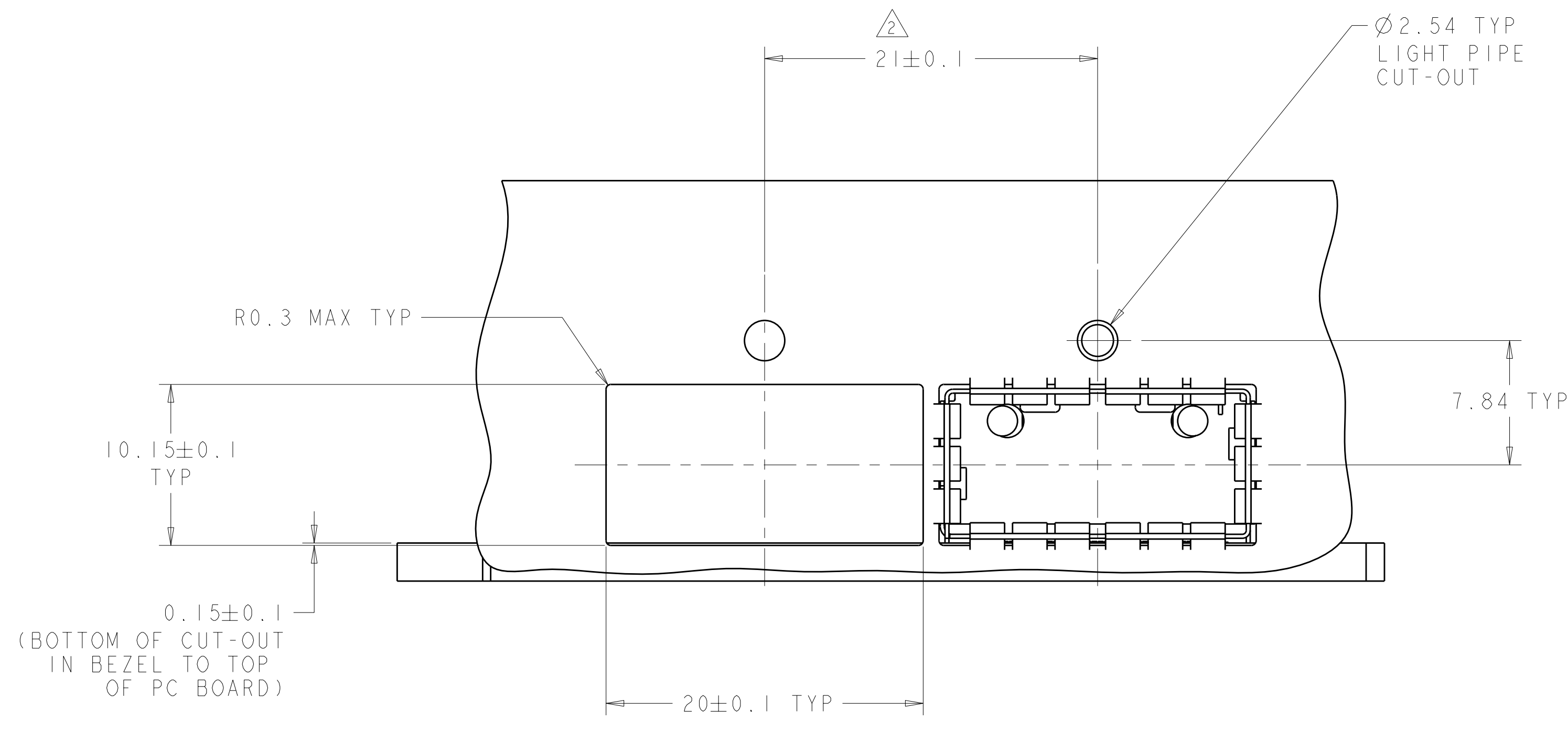


EXPLODED ISOMETRIC VIEW
 SCALE 6:1

THIS PRINT IS
PRELIMINARY
 UNQUALIFIED PRODUCT
 CONTACT PRODUCT ENGINEERING
 BEFORE USING THIS PRINT

<small>THIS DRAWING IS UNPUBLISHED. RELEASED FOR PUBLICATION 2007. THIS IS SUBJECT TO CHANGE WITHOUT NOTICE. THE USER SHALL BE RESPONSIBLE FOR VERIFYING THE DIMENSIONS AND TOLERANCES OF THE PARTS AND ASSEMBLY. CONTACT THE SUPPLIER FOR THE LATEST REVISION.</small>		DWN C. VALENTINE 31MAR2010 CHK J. PETERSON 31MAR2010 APVD J. PETERSON 31MAR2010	Tyco Electronics Harrisburg, PA 17105-3608
DIMENSIONS: mm 	TOLERANCES UNLESS OTHERWISE SPECIFIED: 0 PLC ± 1 PLC ±0.5 2 PLC ±0.13 3 PLC ±0.013 4 PLC ±0.001 ANGLES ±	NAME CAGE ASSEMBLY, THRU BEZEL, QSFP, W/ SINGLE LIGHT PIPE PRODUCT SPEC 108-2286 APPLICATION SPEC 114-13217 WEIGHT - CUSTOMER DRAWING	SIZE CAGE CODE DRAWING NO RESTRICTED TO A100779C=2143432 -
MATERIAL FINISH		SCALE 4:1 SHEET 2 OF 4 REV 1	Tyco Electronics logo

LOC	DIST	REVISIONS			
P	LTB	DESCRIPTION	DATE	DWN	APVD
-	-	SEE SHEET 1	-	-	-

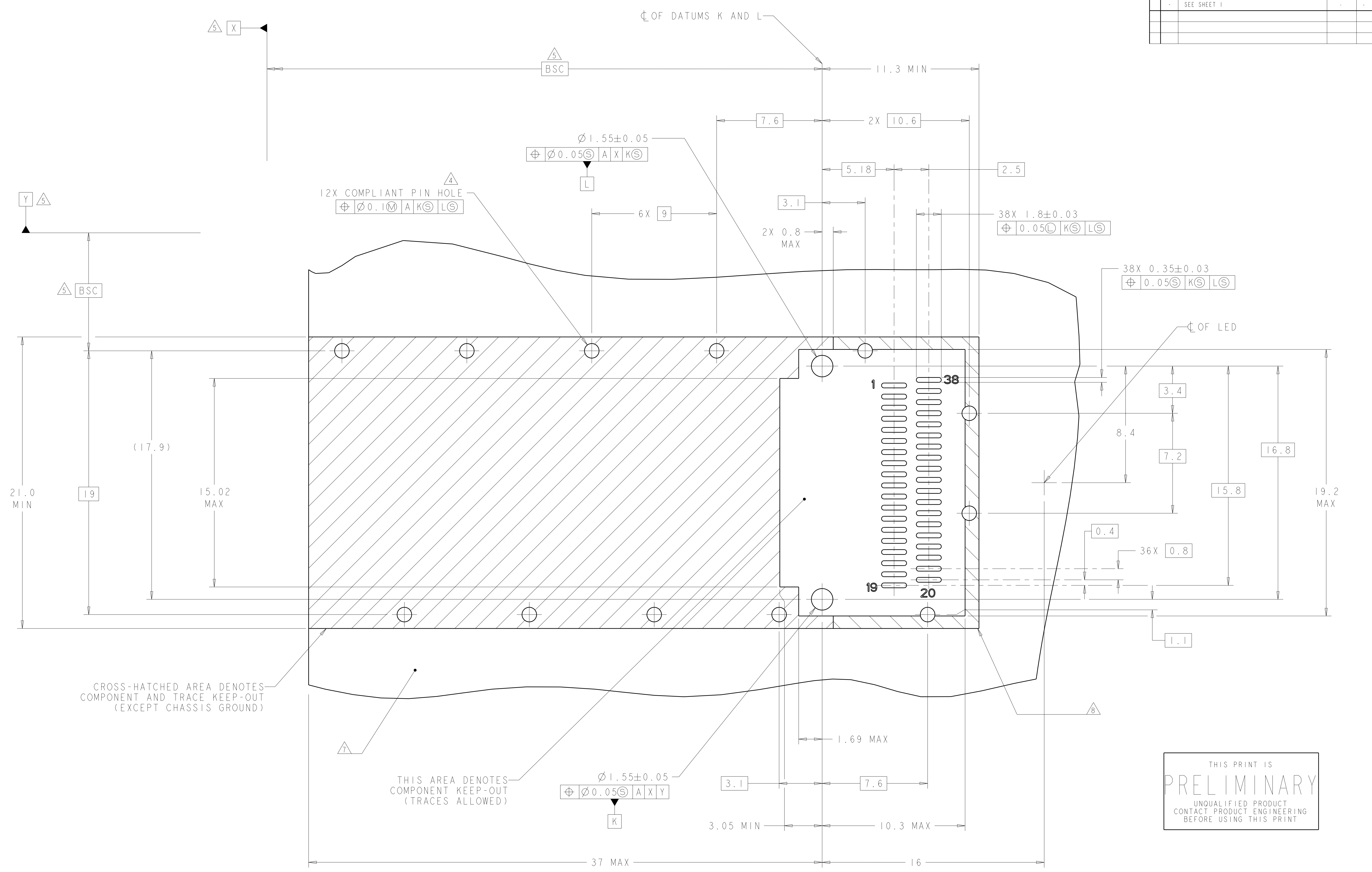


RECOMMENDED BEZEL CUTOUT AND LOCATION

THIS PRINT IS
PRELIMINARY
 UNQUALIFIED PRODUCT
 CONTACT PRODUCT ENGINEERING
 BEFORE USING THIS PRINT

<small>THIS DRAWING IS UNPUBLISHED. RELEASED FOR PUBLICATION 2007. THIS IS SUBJECT TO CHANGE WITHOUT NOTICE AND WITHOUT OBLIGATION. SHOULD BE CONTACTED FOR THE LATEST REVISION.</small>		DWN C. VALENTINE 31MAR2010 CHK J. PETERSON 31MAR2010 APVD J. PETERSON 31MAR2010	Tyco Electronics Tyco Electronics Harrisburg, PA 17105-3608
DIMENSIONS: mm 	TOLERANCES UNLESS OTHERWISE SPECIFIED: 0 PLC ± 1 PLC ±0.5 2 PLC ±0.13 3 PLC ±0.013 4 PLC ±0.001 ANGLES ±	NAME PRODUCT SPEC APPLICATION SPEC 108-2286 114-13217 WEIGHT CUSTOMER DRAWING	NAME CAGE ASSEMBLY, THRU BEZEL, OSFP, W/ SINGLE LIGHT PIPE SIZE CAGE CODE DRAWING NO A1100779C=2143432 RESTRICTED TO
MATERIAL FINISH		WEIGHT CUSTOMER DRAWING	SCALE 4:1 SHEET 3 OF 4 REV 1

LOC	DIST	REV	DATE	BY	APPD
GP	00	1			
		DESCRIPTION	DATE	BY	APPD
		SEE SHEET 1			



CROSS-HATCHED AREA DENOTES COMPONENT AND TRACE KEEP-OUT (EXCEPT CHASSIS GROUND)

THIS AREA DENOTES COMPONENT KEEP-OUT (TRACES ALLOWED)

THIS PRINT IS
PRELIMINARY
 UNQUALIFIED PRODUCT
 CONTACT PRODUCT ENGINEERING
 BEFORE USING THIS PRINT

RECOMENDED PC BOARD LAYOUT
 SCALE 8:1

<small>THIS DRAWING IS UNPUBLISHED. RELEASED FOR PUBLICATION 2007 BY TYCO ELECTRONICS CORPORATION, ALL RIGHTS RESERVED.</small>		DWN: C. VALENTINE 31MAR2010 CHK: J. PETERSON 31MAR2010 APVD: J. PETERSON 31MAR2010	Tyco Electronics Harrisburg, PA 17105-3608
DIMENSIONS: mm 	TOLERANCES UNLESS OTHERWISE SPECIFIED: 9 PLC ±0.5 8 PLC ±0.13 5 PLC ±0.013 4 PLC ±0.001 ANGLES ±0.001	PRODUCT SPEC: 108-2286 APPLICATION SPEC: 114-13217 WEIGHT: -	NAME: CAGE ASSEMBLY, THRU BEZEL, OSFP, W/ SINGLE LIGHT PIPE SIZE: CAGE CODE DRAWING NO: A1100779C=2143432 RESTRICTED TO: -
MATERIAL: FINISH:		CUSTOMER DRAWING	SCALE: 4:1 SHEET 4 OF 4 REV 1