



Chipsmall Limited consists of a professional team with an average of over 10 year of expertise in the distribution of electronic components. Based in Hongkong, we have already established firm and mutual-benefit business relationships with customers from,Europe,America and south Asia,supplying obsolete and hard-to-find components to meet their specific needs.

With the principle of "Quality Parts,Customers Priority,Honest Operation,and Considerate Service",our business mainly focus on the distribution of electronic components. Line cards we deal with include Microchip,ALPS,ROHM,Xilinx,Pulse,ON,Everlight and Freescale. Main products comprise IC,Modules,Potentiometer,IC Socket,Relay,Connector.Our parts cover such applications as commercial,industrial, and automotives areas.

We are looking forward to setting up business relationship with you and hope to provide you with the best service and solution. Let us make a better world for our industry!



Contact us

Tel: +86-755-8981 8866 Fax: +86-755-8427 6832

Email & Skype: info@chipsmall.com Web: www.chipsmall.com

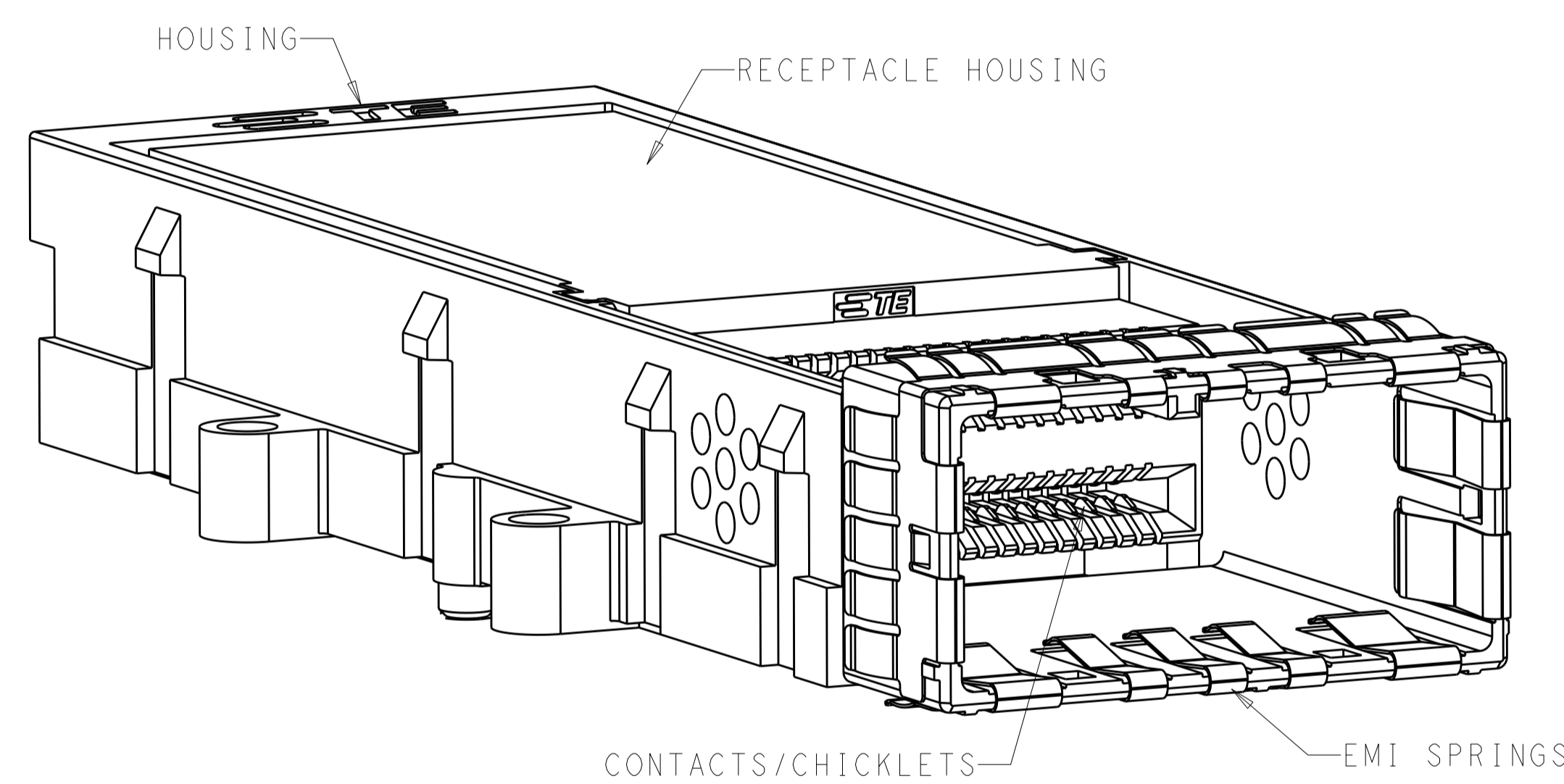
Address: A1208, Overseas Decoration Building, #122 Zhenhua RD., Futian, Shenzhen, China



THIS DRAWING IS UNPUBLISHED. RELEASED FOR PUBLICATION 20
 © COPYRIGHT 20 BY - ALL RIGHTS RESERVED.

LOC		DIST		REVISIONS			
P	LTR	DESCRIPTION	DATE	DWN	APVD		
GP	00						
	8	REVISED	04APR2012	MEC	MDM		

- MATERIALS:
 HOUSING - NICKEL PLATED ZINC ALLOY PER ASTM B 240
 RECEPTACLE HOUSING - LCP, BLACK, UL 94V-O RATED
 CHICKLET - LCP, BLACK, UL 94V-O RATED
 CONTACT - PHOSPHOR BRONZE PER ASTM B 103
 EMI SPRING - COPPER ALLOY
- CONTACT FINISH:
 CONFORMS TO THE REQUIREMENTS OF TYCO ELECTRONICS
 PRODUCT SPECIFICATION 108-2426, BASED ON EIA/ECA-364-1000.01A,
 (CONTROLLED ENVIRONMENT APPLICATIONS) ON MATING INTERFACE,
 TIN ON NEEDLE EYE
- NOTE DELETED
- MOUNTING HARDWARE REQUIRED:
 M2X0.4 (4): MOUNTING SCREW LENGTH = BOARD THICKNESS + 8mm MAX
- THE ENTIRE AREA OF THE CONNECTOR FOOTPRINT, INDICATED
 BY CROSSHATCHING, TO BE CONSIDERED THE KEEPOUT AREA FOR
 COMPONENTS AND SIGNAL TRACES, TOP SIDE ONLY, TOP SIDE
 TRACES ALLOWED WITHIN CONNECTOR HOLE PATTERN, CROSSHATCHING
 TO BE CONDUCTIVE
- FEATURES IN PHANTOM LINES ARE RELATED TO USE WITH
 CONNECTOR PN 2149701-X AND GANGED SIDE BY SIDE APPLICATION
- PCB THICKNESS = 1.44 MIN



2149733-1
 SCALE 5:1

OBSELETE	3	84 POSITION RECEPTACLE ASSEMBLY	2149733-2
	2	84 POSITION RECEPTACLE ASSEMBLY	2149733-1
	FINISH	DESCRIPTION	PART NUMBER

PRELIMINARY PART- NOT RELEASED FOR PRODUCTION

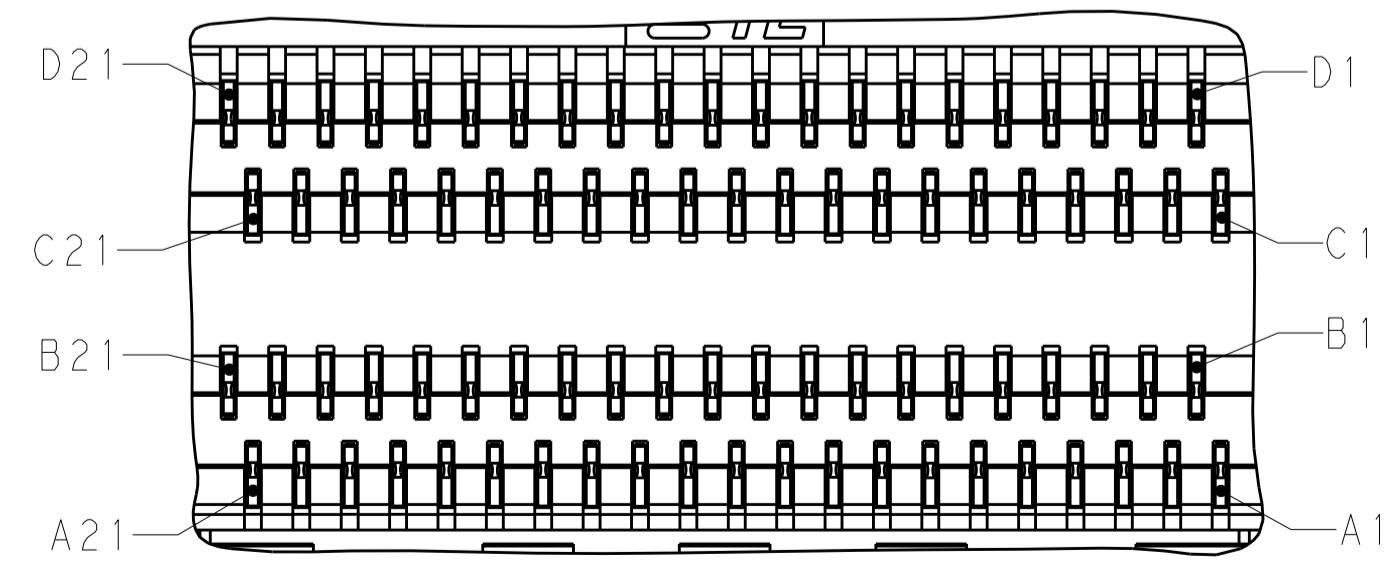
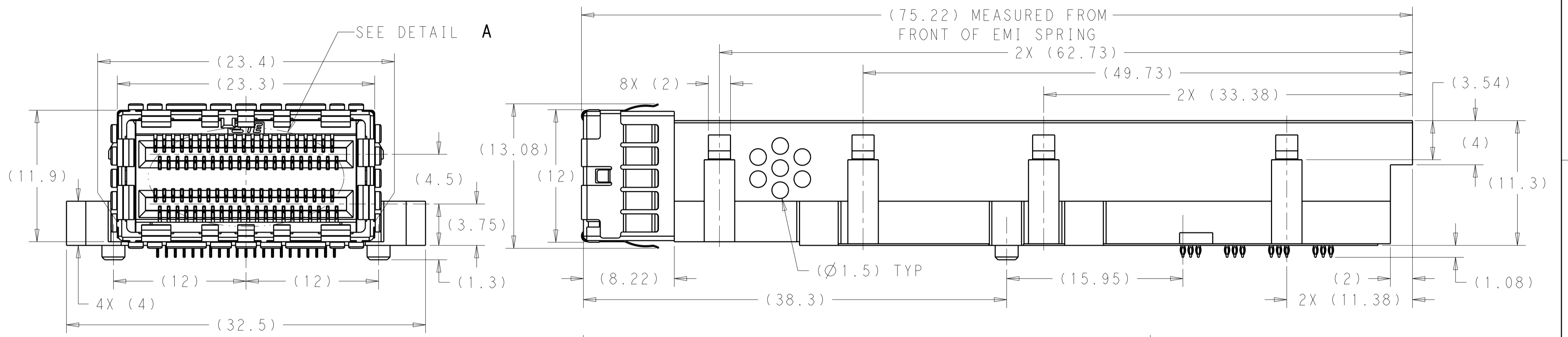
THIS DRAWING IS A CONTROLLED DOCUMENT.		DWN	M. E. COWHER	16SEP2010
DIMENSIONS: mm		CHK	M. D. MORRISON	23SEP2010
TOLERANCES UNLESS OTHERWISE SPECIFIED:		APVD	M. D. MORRISON	23SEP2010
0 PLC	±0.2	NAME		
1 PLC	±0.1	M. D. MORRISON		
2 PLC	±0.05	PRODUCT SPEC		
3 PLC	±	APPLICATION SPEC		
4 PLC	±	WEIGHT		
ANGLES	±1°	SIZE		
FINISH		CAGE CODE		
MATERIAL		DRAWING NO		
SEE NOTES	SEE NOTES	RESTRICTED TO		
CUSTOMER DRAWING		A200779C-2149733		
SCALE 1:1		SHEET 1 OF 4 REV 8		



THIS DRAWING IS UNPUBLISHED. RELEASED FOR PUBLICATION 20
 © COPYRIGHT 20 BY - ALL RIGHTS RESERVED.

LOC		DIST		REVISIONS			
P	LTR	DESCRIPTION	DATE	DWN	APVD		
GP	00	SEE SHEET 1					

PRELIMINARY PART- NOT RELEASED FOR PRODUCTION

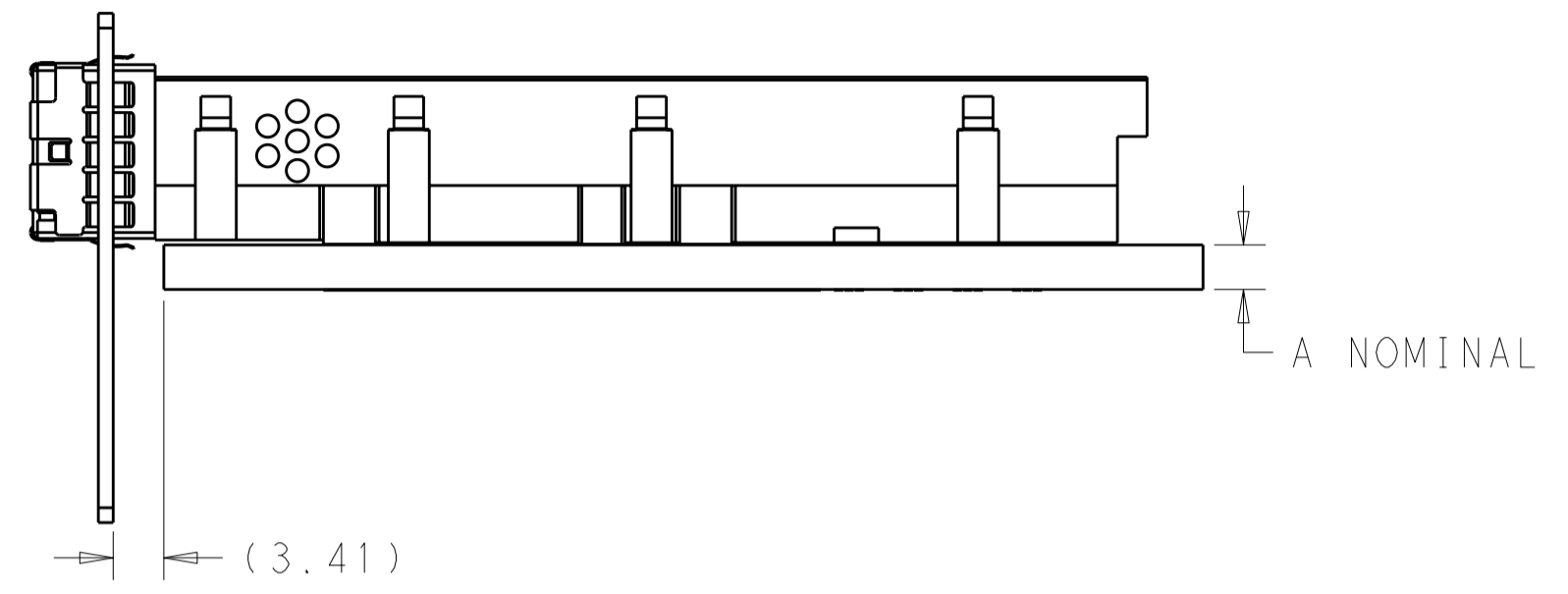
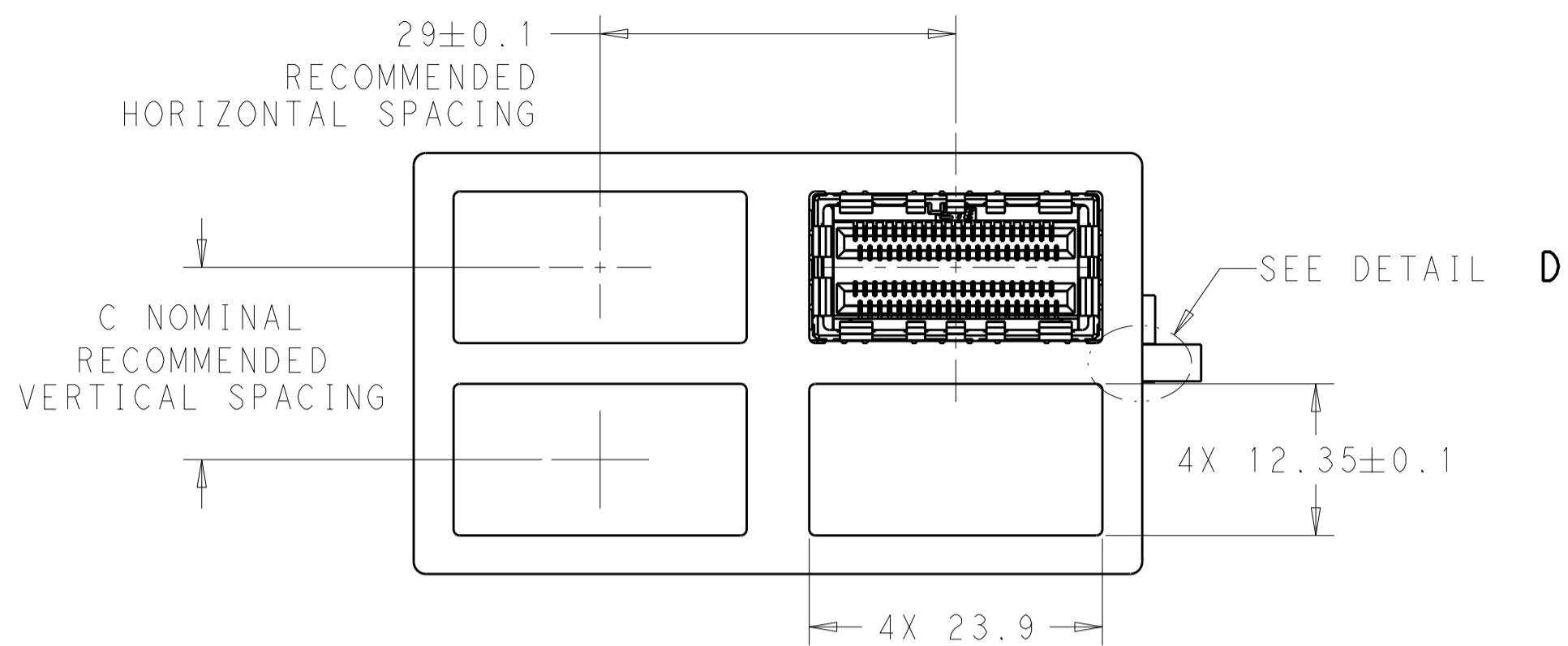


2149733-1
SCALE 4:1

THIS DRAWING IS A CONTROLLED DOCUMENT.		DWN M.E. COWHER 16SEP2010	TE Connectivity	
DIMENSIONS: mm		CHK M.D. MORRISON 23SEP2010		
TOLERANCES UNLESS OTHERWISE SPECIFIED:		APVD M.D. MORRISON 23SEP2010	NAME RECEPTACLE ASSEMBLY, BELLY-BELLY, EXTENDED, CXP 84 POSITION, CXP	
0 PLC ±0.2		PRODUCT SPEC -	SIZE CAGE CODE DRAWING NO RESTRICTED TO	
1 PLC ±0.1		APPLICATION SPEC -	A200779 C-2149733	
2 PLC ±0.05		WEIGHT -	SCALE 1:1 SHEET 2 OF 4 REV 8	
3 PLC ±		CUSTOMER DRAWING		
4 PLC ±				
ANGLES ±°				
FINISH				
SEE NOTES		SEE NOTES		

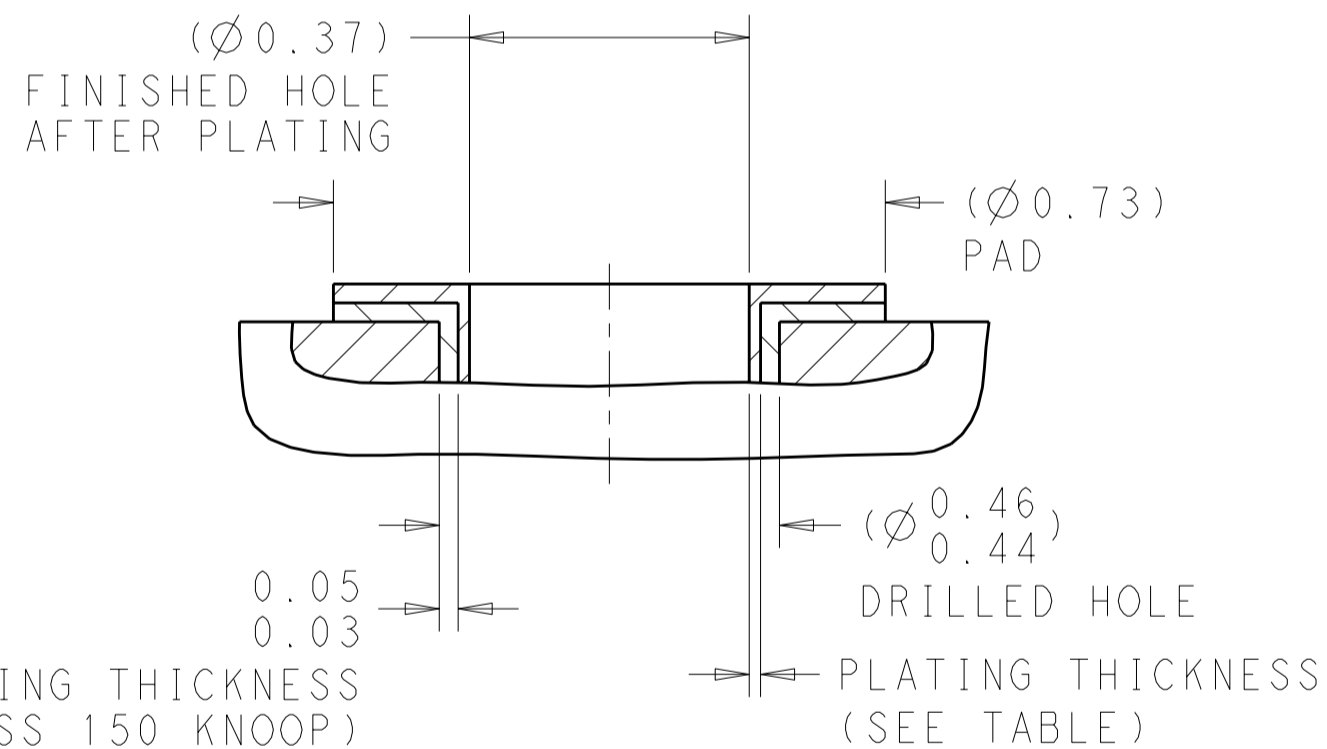
THIS DRAWING IS UNPUBLISHED. RELEASED FOR PUBLICATION 20
 © COPYRIGHT 20 BY - ALL RIGHTS RESERVED.

LOC	DIST	REVISIONS					
GP	00	P	LTR	DESCRIPTION	DATE	DWN	APVD
		-		SEE SHEET 1			

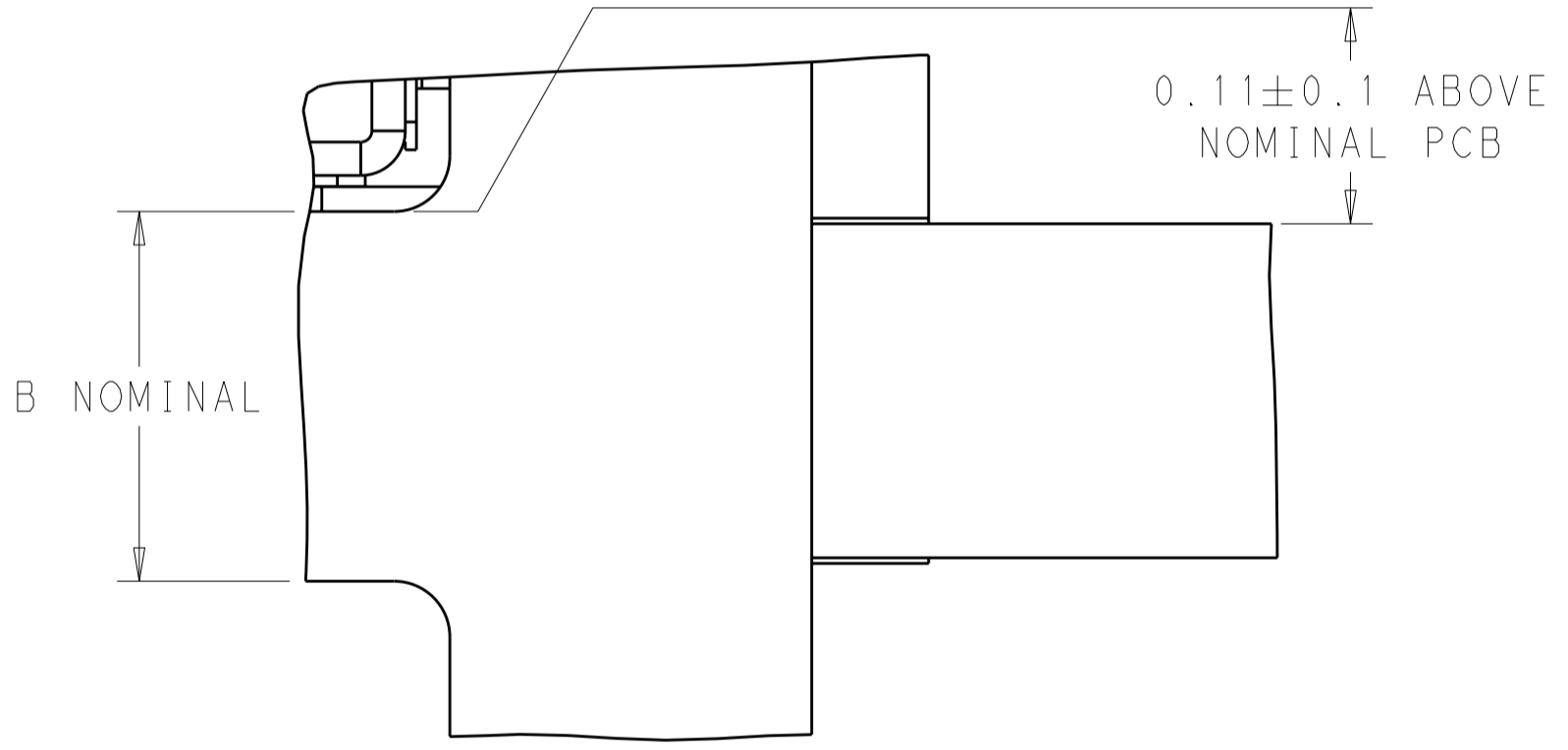


RECOMMENDED BRACKET LAYOUT
SCALE 2:1

PRELIMINARY PART- NOT RELEASED FOR PRODUCTION



RECOMMENDED HOLE DIMENSIONS FOR SIGNAL CONTACTS
SCALE 100:1



DETAIL D
SCALE 15:1

PLATING THICKNESS	TYPE OF PLATING
0.004-0.01	HOT AIR SOLDER LEVELING (HASL) TIN-LEAD
0.0005-0.002	IMMERSION TIN
0.0002-0.0005	ORGANIC SOLDERABILITY PRESERVATIVE (OSP)
0.0001-0.0005 Au, 0.004-0.0076 Ni	IMMERSION GOLD OVER NICKEL (ENIG)
0.0001-0.0005	IMMERSION SILVER

12.57+A	0.22+A	PCB THICKNESS
C	B	A

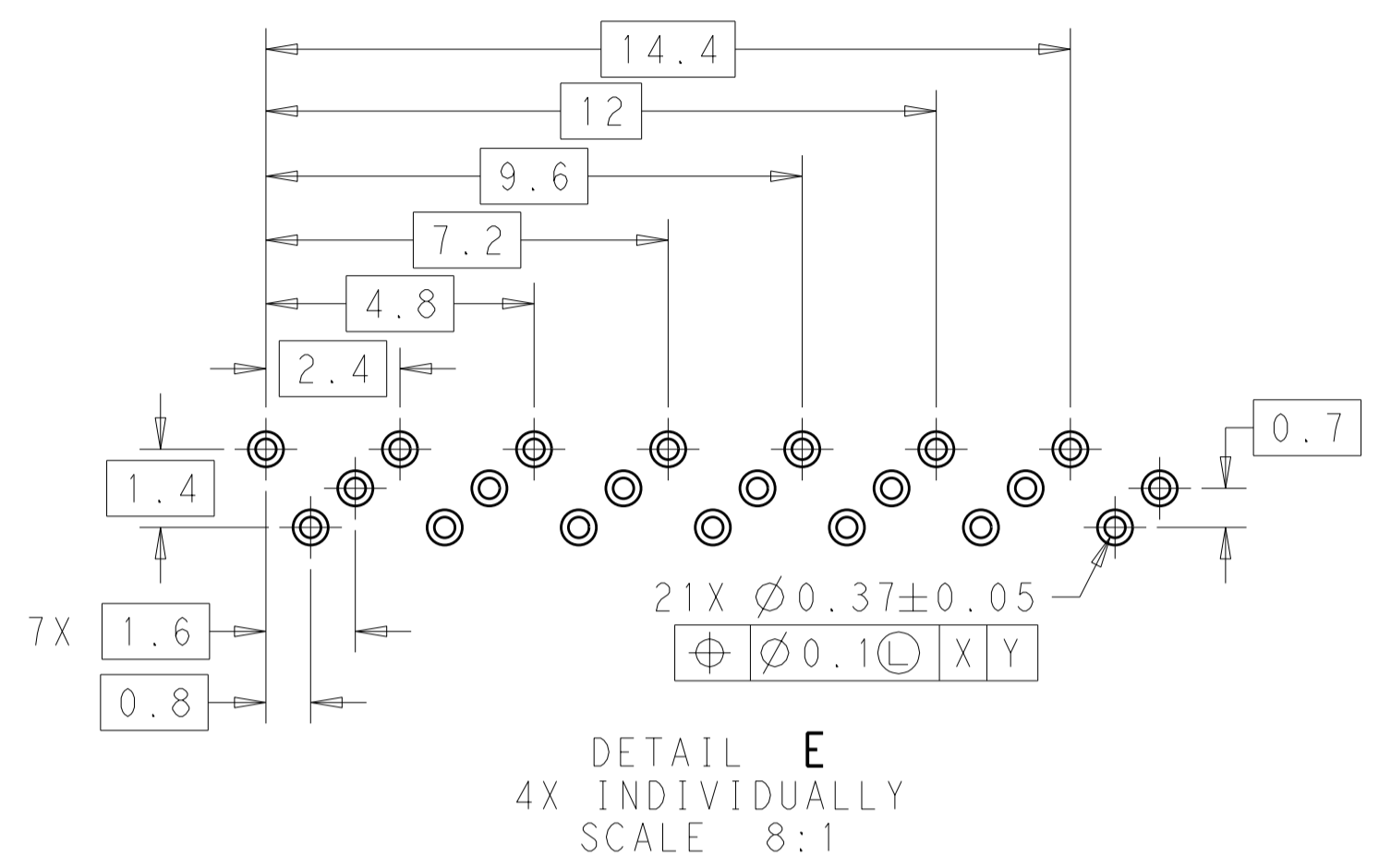
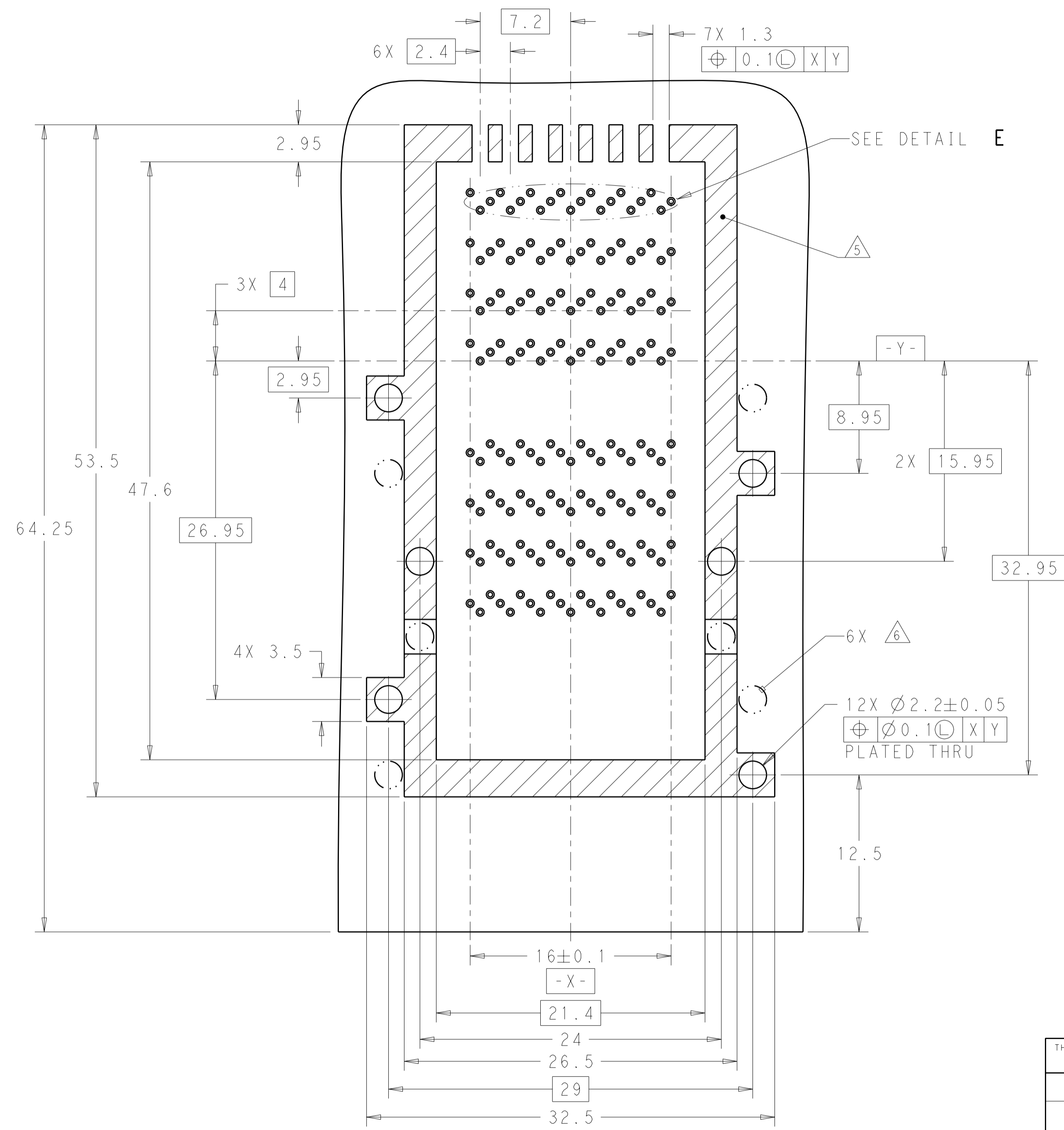
THIS DRAWING IS A CONTROLLED DOCUMENT.

DIMENSIONS: mm	TOLERANCES UNLESS OTHERWISE SPECIFIED: 0 PLC ±0.2 1 PLC ±0.1 2 PLC ±0.05 3 PLC ± 4 PLC ± ANGLES ±1° FINISH	DWN M.E. COWHER 16SEP2010 CHK M.D. MORRISON 23SEP2010 APVD M.D. MORRISON 23SEP2010	TE Connectivity RECEPTACLE ASSEMBLY, BELLY-BELLY, EXTENDED, CXP 84 POSITION, CXP
MATERIAL	SEE NOTES	PRODUCT SPEC APPLICATION SPEC WEIGHT	

SIZE A2 CAGE CODE 00779 DRAWING NO. C-2149733 RESTRICTED TO -
 CUSTOMER DRAWING SCALE 1:1 SHEET 3 OF 4 REV 8

THIS DRAWING IS UNPUBLISHED. RELEASED FOR PUBLICATION 20
 © COPYRIGHT 20 BY - ALL RIGHTS RESERVED.

LOC	DIST	REVISIONS			
P	LTR	DESCRIPTION	DATE	DWN	APVD
GP	00	SEE SHEET 1			



RECOMMENDED PCB LAYOUT
 COMPONENT SIDE SHOWN
 SCALE 4:1

PRELIMINARY PART- NOT RELEASED FOR PRODUCTION

THIS DRAWING IS A CONTROLLED DOCUMENT.		DWN 16SEP2010 M.E. COWHER	TE Connectivity	
DIMENSIONS: mm		CHK 23SEP2010 M.D. MORRISON		
TOLERANCES UNLESS OTHERWISE SPECIFIED:		APVD 23SEP2010 M.D. MORRISON	NAME	
0 PLC ±0.2		PRODUCT SPEC	RECEPTACLE ASSEMBLY, BELLY-BELLY, EXTENDED, CXP 84 POSITION, CXP	
1 PLC ±0.1		APPLICATION SPEC	SIZE	RESTRICTED TO
2 PLC ±0.05		WEIGHT	A200779	
3 PLC ±		CUSTOMER DRAWING	C=2149733	
4 PLC ±		SCALE 1:1	SHEET 4 OF 4	REV 8
ANGLES ±1°				
FINISH				
SEE NOTES	SEE NOTES			