



Chipsmall Limited consists of a professional team with an average of over 10 year of expertise in the distribution of electronic components. Based in Hongkong, we have already established firm and mutual-benefit business relationships with customers from,Europe,America and south Asia,supplying obsolete and hard-to-find components to meet their specific needs.

With the principle of "Quality Parts,Customers Priority,Honest Operation,and Considerate Service",our business mainly focus on the distribution of electronic components. Line cards we deal with include Microchip,ALPS,ROHM,Xilinx,Pulse,ON,Everlight and Freescale. Main products comprise IC,Modules,Potentiometer,IC Socket,Relay,Connector.Our parts cover such applications as commercial,industrial, and automotives areas.

We are looking forward to setting up business relationship with you and hope to provide you with the best service and solution. Let us make a better world for our industry!



## Contact us

Tel: +86-755-8981 8866 Fax: +86-755-8427 6832

Email & Skype: info@chipsmall.com Web: www.chipsmall.com

Address: A1208, Overseas Decoration Building, #122 Zhenhua RD., Futian, Shenzhen, China



# High Frequency Ceramic Solutions

Preliminary

## 2.15 GHz Band Pass Filter

P/N 2150BP39A0100

Detail Specification: 05/03/11

Page 1 of 2

### General Specifications

Part Number	2150BP39A0100	
Frequency (MHz)	2100 ~ 2200	
Attenuation (min.)	1950 MHz	18 dB
Attenuation (min.)	2360 MHz	18 dB

Insertion Loss	3.2 dB max.
Return Loss	9.5 dB min.
Input Power	500 mW max.
Impedance	50 $\Omega$
Reel Quantity	3000
Operating Temperature	-40 to +85°C
Storage Temperature	+5 ~ +35°C, Humidity 45~75%RH, 12 mos. max

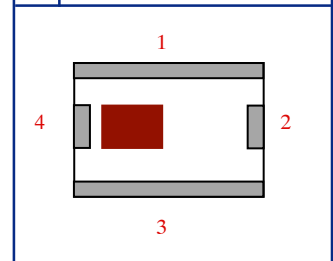
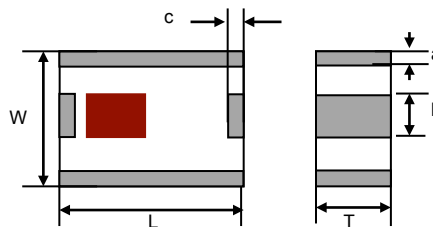
P/N	Packaging	Bulk	Suffix = S	Eg. 2150BP39A0100S
	Style	T & R	Suffix = E	Eg. 2150BP39A0100E
Suffix	Termination	100% Tin	Suffix = None	Eg. 2150BP39A0100(E or S)
	Style	Tin / Lead	Suffix = /Pb	Eg. 2150BP39A0100(E or S)/Pb

### Terminal Configuration

No.	Function
1	GND
2	OUT
3	GND
4	IN

### Mechanical Dimensions

	In	mm
L	0.098 ± 0.008	2.50 ± 0.20
W	0.079 ± 0.008	2.00 ± 0.20
T	0.035 ± 0.004	0.90 ± 0.10
a	0.012 ± 0.008	0.30 ± 0.20
b	0.024 ± 0.008	0.60 ± 0.20
c	0.012 ± 0.008	0.30 ± 0.20

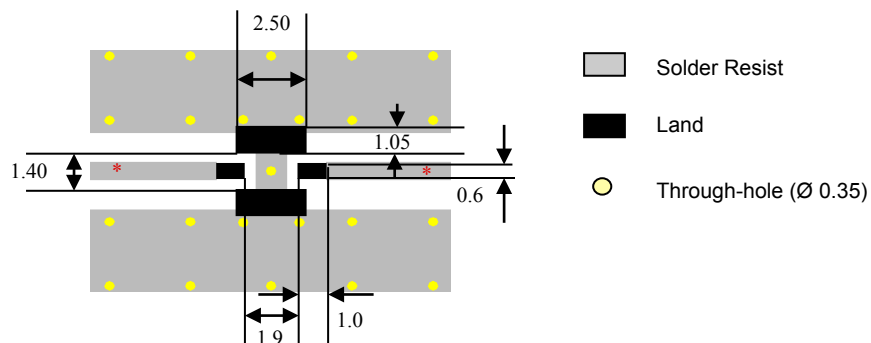


### Mounting Considerations

Mount these devices with brown mark facing up.

\* Line width should be designed to provide 50  $\Omega$  impedance matching characteristics.

Units: mm



Johanson Technology, Inc. reserves the right to make design changes without notice.

All sales are subject to Johanson Technology, Inc. terms and conditions.



[www.johansontechology.com](http://www.johansontechology.com)

4001 Calle Tecate • Camarillo, CA 93012 • TEL 805.389.1166 FAX 805.389.1821

2011 Johanson Technology, Inc. All Rights Reserved

# High Frequency Ceramic Solutions

Preliminary

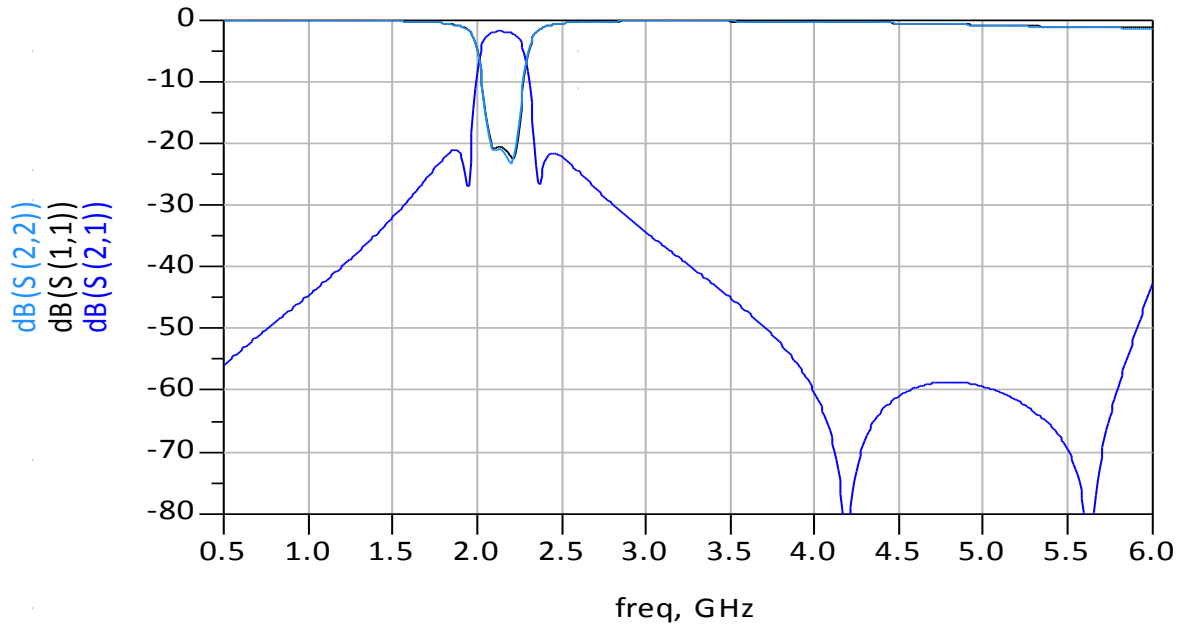
## 2.15 GHz Band Pass Filter

P/N 2150BP39A0100

Detail Specification: 05/03/11

Page 2 of 2

### Typical Electrical Performance (T=25°C)



Johanson Technology, Inc. reserves the right to make design changes without notice.

All sales are subject to Johanson Technology, Inc. terms and conditions.



[www.johansontechnology.com](http://www.johansontechnology.com)

4001 Calle Tecate • Camarillo, CA 93012 • TEL 805.389.1166 FAX 805.389.1821

2011 Johanson Technology, Inc. All Rights Reserved