



Chipsmall Limited consists of a professional team with an average of over 10 year of expertise in the distribution of electronic components. Based in Hongkong, we have already established firm and mutual-benefit business relationships with customers from,Europe,America and south Asia,supplying obsolete and hard-to-find components to meet their specific needs.

With the principle of “Quality Parts,Customers Priority,Honest Operation,and Considerate Service”,our business mainly focus on the distribution of electronic components. Line cards we deal with include Microchip,ALPS,ROHM,Xilinx,Pulse,ON,Everlight and Freescale. Main products comprise IC,Modules,Potentiometer,IC Socket,Relay,Connector.Our parts cover such applications as commercial,industrial, and automotives areas.

We are looking forward to setting up business relationship with you and hope to provide you with the best service and solution. Let us make a better world for our industry!



Contact us

Tel: +86-755-8981 8866 Fax: +86-755-8427 6832

Email & Skype: info@chipsmall.com Web: www.chipsmall.com

Address: A1208, Overseas Decoration Building, #122 Zhenhua RD., Futian, Shenzhen, China

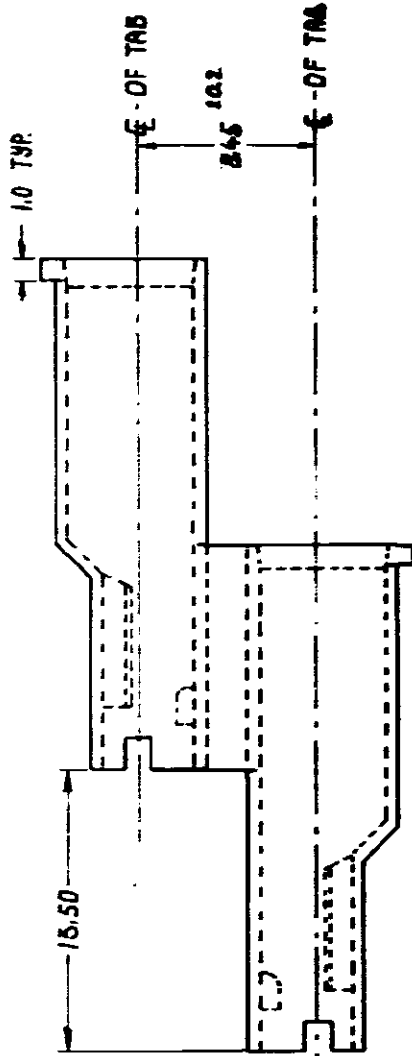
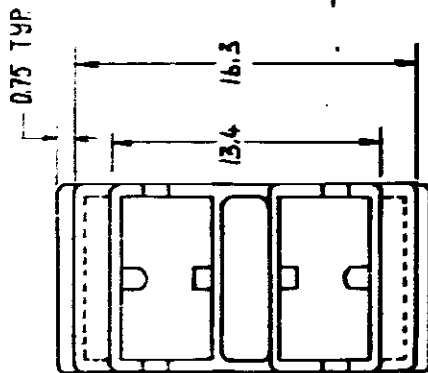
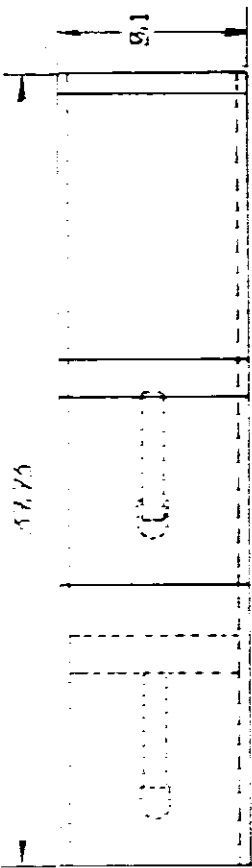


DO NOT SCALE
DIMENSIONS IN mm

METRIC

FORMER PART
PROJECT NUMBER

NOTE 1. TOLERANCE EXCEPT AS NOTED 0.054



BLACK	215528-1	PART NUMBER
COLDA	AMP	MATERIAL
CUSTOMER DRAWING	AMP HOLLAND BV 1-Hertogenbosch, The Netherlands	
FOR REFERENCE ONLY WILL NOT BE UPDATED	RELEASED FOR PUBLICATION SEPTEMBER 1984	
DR D.C. AMPLAS HARRIS & 6 APRIL 1984	NAME 2 CIRCUIT HOUSING FOR POSITIVE LOCK RECEPTRLE	REV DATE 15 07 87
CHK	WIRE RANGE	D M Y
APP	SIZE A3	REV LITH B
	SHEET 1 OF 1	
	2.7.87	DRAWING NO C-215528

D