



Chipsmall Limited consists of a professional team with an average of over 10 year of expertise in the distribution of electronic components. Based in Hongkong, we have already established firm and mutual-benefit business relationships with customers from,Europe,America and south Asia,supplying obsolete and hard-to-find components to meet their specific needs.

With the principle of “Quality Parts,Customers Priority,Honest Operation,and Considerate Service”,our business mainly focus on the distribution of electronic components. Line cards we deal with include Microchip,ALPS,ROHM,Xilinx,Pulse,ON,Everlight and Freescale. Main products comprise IC,Modules,Potentiometer,IC Socket,Relay,Connector.Our parts cover such applications as commercial,industrial, and automotives areas.

We are looking forward to setting up business relationship with you and hope to provide you with the best service and solution. Let us make a better world for our industry!



## Contact us

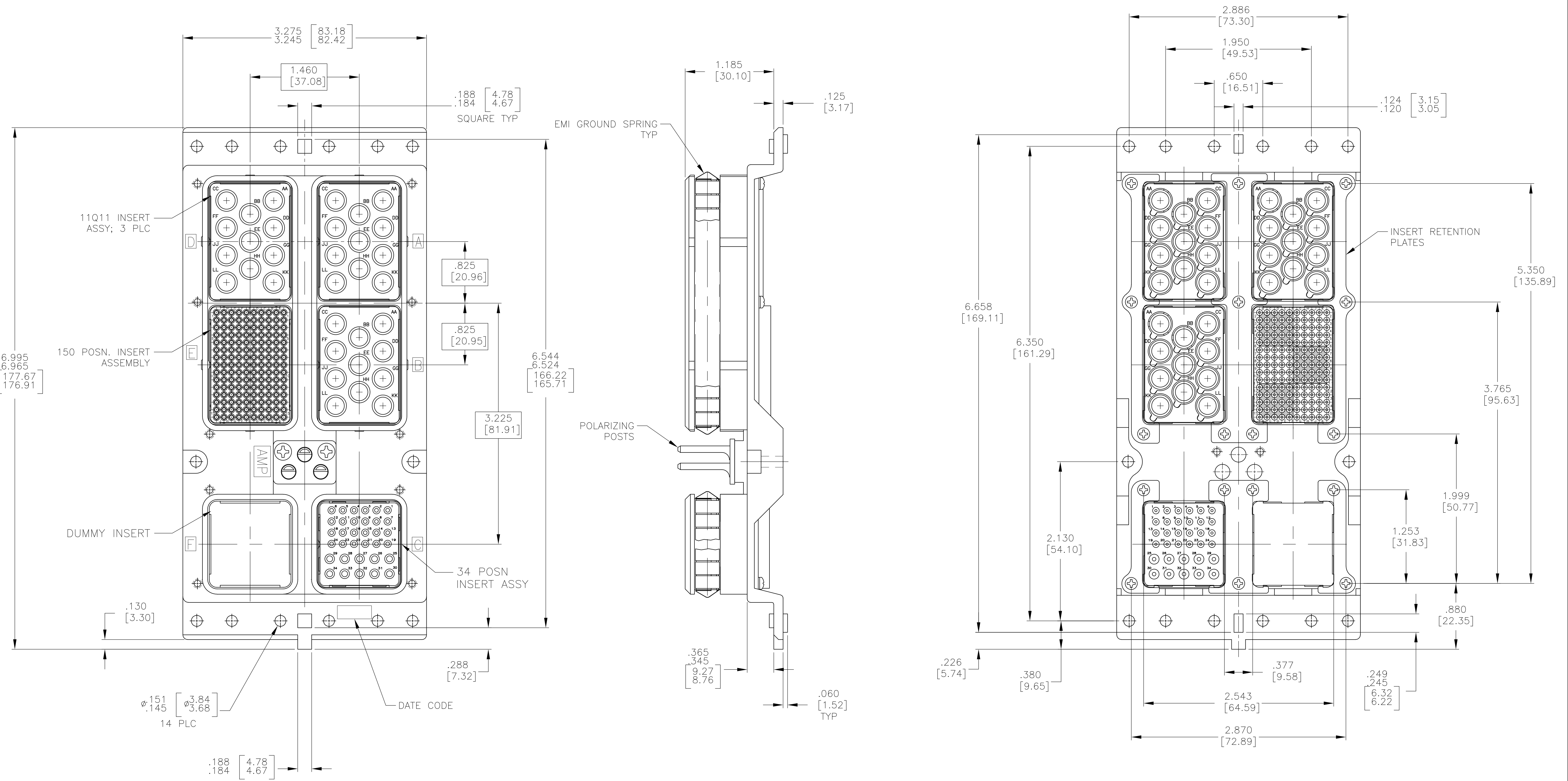
Tel: +86-755-8981 8866 Fax: +86-755-8427 6832

Email & Skype: info@chipsmall.com Web: www.chipsmall.com

Address: A1208, Overseas Decoration Building, #122 Zhenhua RD., Futian, Shenzhen, China



LOC		DIST		REVISIONS			
P	LTR	DESCRIPTION	DATE	DMN	APVD		
C		REVISED PER ECO-15-011840	17NOV15	RS	CT		



- CONNECTOR DIMENSIONS ARE PER ARINC 600 SPECIFICATION
- DUST COVER (NOT SHOWN) INSTALLED FOR SHIPPING. (2 PLC)
- KEYING SHOWN IN POSITION "01" FOR REFERENCE ONLY. SEE TABLE FOR KEYING POSITION. FOR POSITION "00" KEYING SHIPPED UNASSEMBLED.
- THE FOLLOWING CONTACTS ARE INCLUDED BUT NOT INSTALLED: SIZE 22 CRIMP PIN CONTACT; TE PART NO. 208262-3; QTY = 150 SIZE 20 CRIMP SOCKET CONTACT; TE PART NO. 208267-2; QTY = 24 SIZE 16 CRIMP SOCKET CONTACT; TE PART NO. 208270-2; QTY = 10 QUADRAX SOCKET CONTACT; TE PART NO. 1445693-1; QTY = 33

COMPONENT	MATERIAL	FINISH
SHELL	DIE CAST ALUMINUM PER ASTM-B-85	ELECTROLESS NICKEL PER MIL-C-26074.
RETENTION PLATES	ALUMINUM ALLOY PER ASTM-B-209	ELECTROLESS NICKEL PER MIL-C-26074.
SCREWS AND LOCKWASHERS	STEEL OR STAINLESS STEEL	CHROMATE OVER ZINC OR PASSIVATED
POLARIZING POSTS	ZINC ALLOY PER ASTM-B-86	ELECTROLESS NICKEL PER MIL-C-26074.
POLARIZING POST RETAINING PLATE	ALUMINUM ALLOY PER ASTM-B-209	BLUE ANODIZED PER MIL-A-8625
150 & 34 INSERTS	THERMOSET	-
11Q11 & DUMMY INSERTS	ALUMINUM ALLOY PER ASTM-B-209	ELECTROLESS NICKEL PER MIL-C-26074.

OBSELETE	"01"	2157337-1
	KEYING POSITION	PART NUMBER

THIS DRAWING IS A CONTROLLED DOCUMENT.

DIMENSIONS: INCHES  
 TOLERANCES UNLESS OTHERWISE SPECIFIED:  
 0 PLC ± -  
 1 PLC ± -  
 2 PLC ± -  
 3 PLC ± .005 [0.13]  
 4 PLC ± -  
 ANGLES ± -

MATERIAL: SEE TABLE  
 FINISH: SEE TABLE

THIS DRAWING IS A CONTROLLED DOCUMENT.  
 DWG: C.C.THOMAS 6-9-11  
 CHK: W.BERHMART 6-9-11  
 APVD: W.BERHMART 6-9-11  
 NAME: PLUG ASSY, SIZE 3, ARINC 600 (11Q11/11Q11/34/11Q11/150/DUMMY)  
 APPLICATION SPEC: -  
 WEIGHT: -  
 CUSTOMER DRAWING: -  
 SCALE: 3:2  
 SHEET: 1 OF 1  
 REV: C

DIN: C.C.THOMAS 6-9-11  
 CHK: W.BERHMART 6-9-11  
 APVD: W.BERHMART 6-9-11  
 NAME: PLUG ASSY, SIZE 3, ARINC 600 (11Q11/11Q11/34/11Q11/150/DUMMY)  
 APPLICATION SPEC: -  
 WEIGHT: -  
 CUSTOMER DRAWING: -  
 SCALE: 3:2  
 SHEET: 1 OF 1  
 REV: C

**STE** TE Connectivity  
 SIZE: A1  
 CASE CODE: 00779  
 DRAWING NO: 2157337  
 RESTRICTED TO: -